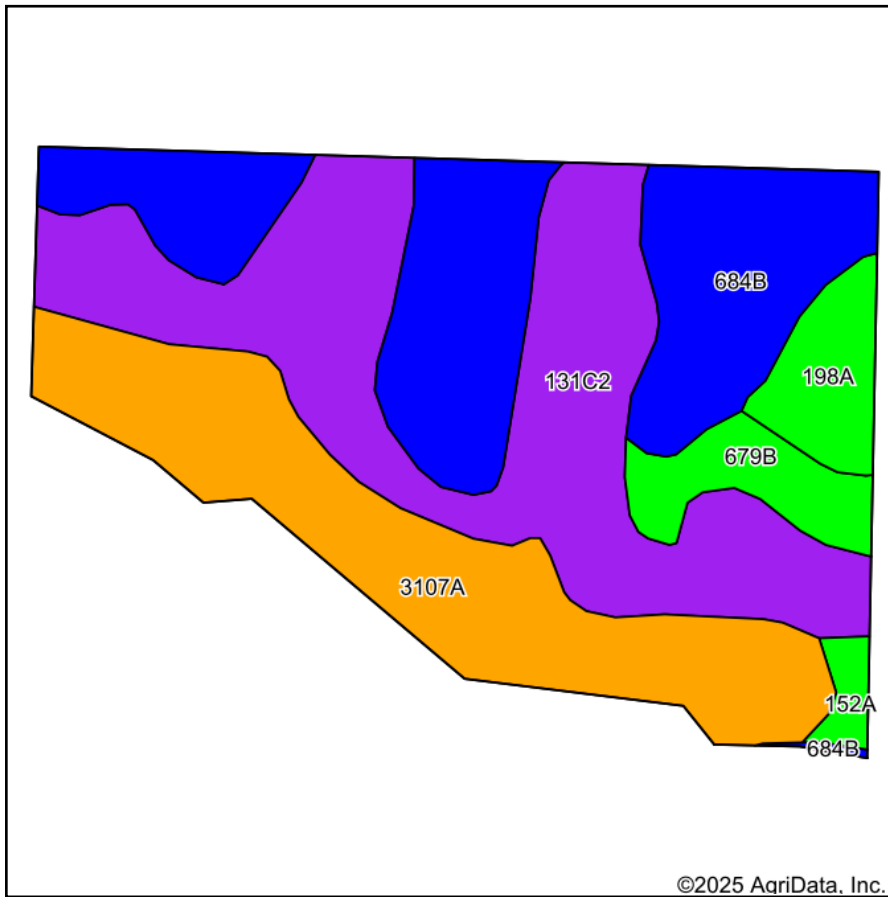
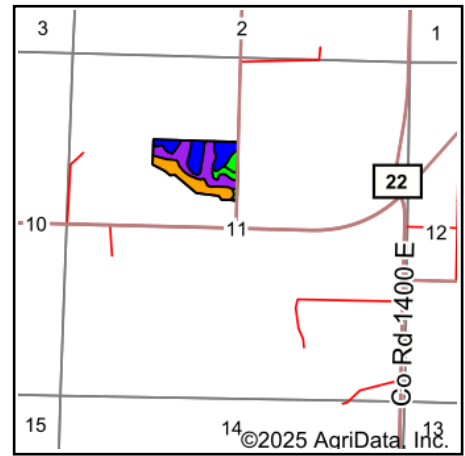


Soils Map



Soils data provided by USDA and NRCS.



State: **Illinois**
 County: **Christian**
 Location: **11-15N-2W**
 Township: **Mount Auburn**
 Acres: **21.53**
 Date: **9/15/2025**



Area Symbol: IL021, Soil Area Version: 18

Code	Soil Description	Acres	Percent of field	Il. State Productivity Index Legend	Subsoil rooting ^a	Corn Bu/A	Soybeans Bu/A	Wheat Bu/A	Oats Bu/A ^b	Sorghum ^c Bu/A	Grass-legume ^e hay, T/A	Crop productivity index for optimum management
**131C2	Alvin fine sandy loam, 5 to 10 percent slopes, eroded	7.68	35.7%		FAV	**140	**45	**55	**69	0	**4.00	**103
**684B	Broadwell silt loam, 2 to 5 percent slopes	6.25	29.0%		FAV	**186	**58	**72	**99	0	**7.00	**137
**3107A	Sawmill silty clay loam, 0 to 2 percent slopes, frequently flooded	5.28	24.5%		FAV	**170	**54	**64	**88	**1	**5.00	**125
**679B	Blackberry silt loam, 2 to 5 percent slopes	1.05	4.9%		FAV	**192	**59	**73	**102	0	**7.00	**141
198A	Elburn silt loam, 0 to 2 percent slopes	1.01	4.7%		FAV	197	61	74	94	0	6.00	143
**152A	Drummer silty clay loam, 0 to 2 percent slopes	0.26	1.2%		FAV	**195	**63	**73	**100	0	**6.00	**144
Weighted Average						166.6	52.6	64.1	85.5	0.2	5.4	122.5

Soils data provided by USDA and NRCS. Soils data provided by University of Illinois at Champaign-Urbana.

Table: Optimum Crop Productivity Ratings for Illinois Soil EFOTG are sourced from Bulletin 811 calculated Map Unit Base Yield Indices, and adjusted (Adj) for slope, erosion, flooding, and surface texture. Publication Date: 01-28-2025

Crop yields and productivity (B811 EFOTG) are maintained at the following USDA web site: 2023 Illinois Soil Productivity and Yield Indices:

<https://efotg.sc.egov.usda.gov/#!/state/IL/documents/section=2&folder=52809>

** Base indexes from Bulletin 811 adjusted for slope, erosion, flooding, and surface texture according to the II. Soils EFOTG

b Soils in the southern region were not rated for oats and are shown with a zero "0".

c Soils in the northern region or in both regions were not rated for grain sorghum and are shown with a zero "0".

e Soils in the well drained group were not rated for grass-legume and are shown with a zero "0".