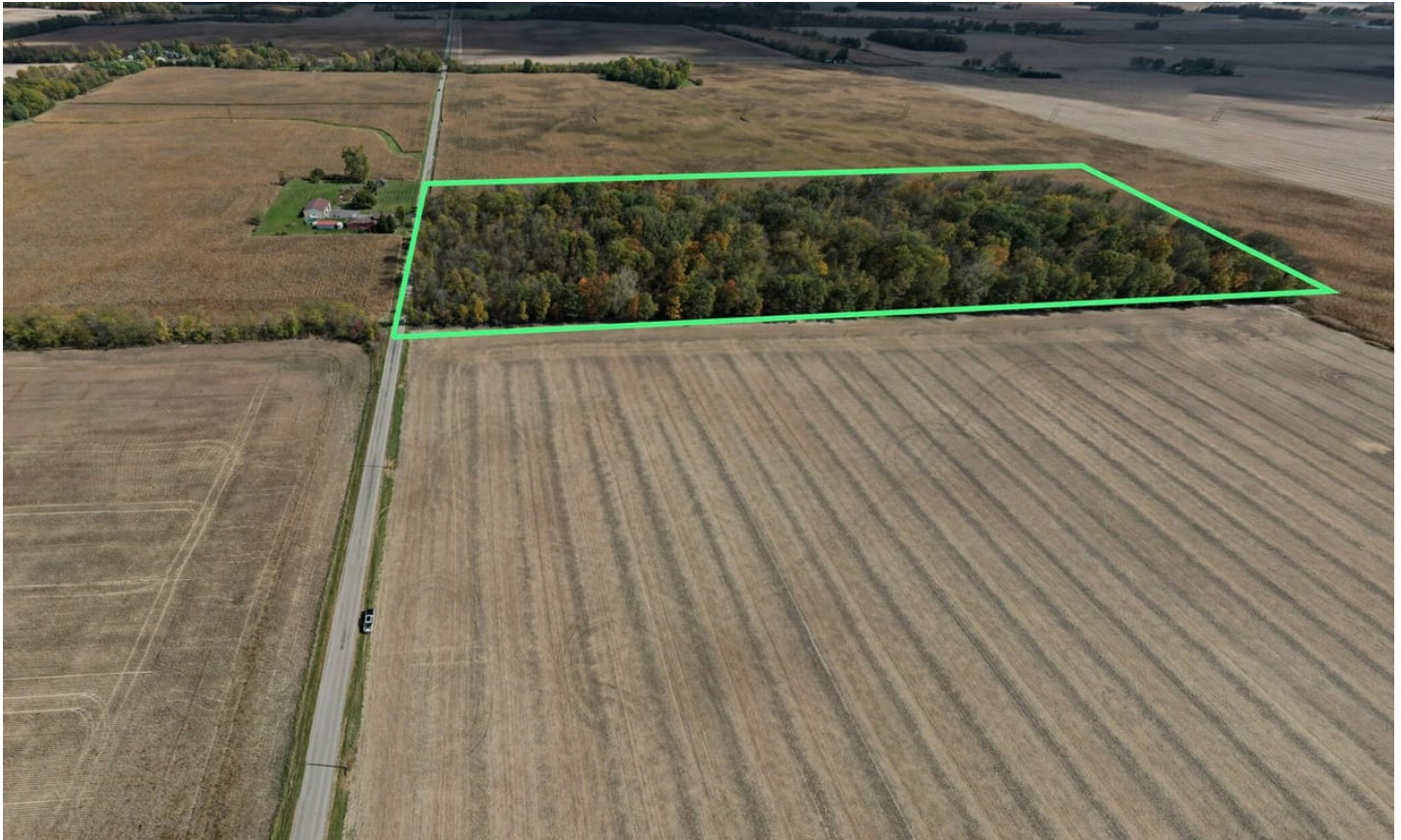


15+/- Acres of Private Wooded Land in the Oak Hill
School District
747 W 700 N 27
La Fontaine, IN 46940

\$115,000
14.780± Acres
Grant County



**15+/- Acres of Private Wooded Land in the Oak Hill School District
La Fontaine, IN / Grant County**

SUMMARY

Address

747 W 700 N 27

City, State Zip

La Fontaine, IN 46940

County

Grant County

Type

Undeveloped Land, Business Opportunity, Recreational Land,
Timberland

Latitude / Longitude

40.650108 / -85.816189

Taxes (Annually)

102

Acreage

14.780

Price

\$115,000

Property Website

<https://indianalandandlifestyle.com/property/15-acres-of-private-wooded-land-in-the-oak-hill-school-district-grant-indiana/66220/>



15+/- Acres of Private Wooded Land in the Oak Hill School District La Fontaine, IN / Grant County

PROPERTY DESCRIPTION

15+/- Acres of Private Wooded Land in the Oak Hill School District

Seize the opportunity to build your dream home on **15+/- acres** of secluded, wooded land in the highly desirable **La Fontaine, IN** area. Nestled within the **Oak Hill School District**, this property offers the perfect blend of privacy and natural beauty, with mature trees creating a serene and picturesque setting.

Key Features:

- **Size:** 15+/- acres of wooded land, perfect for a private building lot.
- **Location:** Situated in the sought-after La Fontaine area.
- **Mature Trees:** The property is covered with large, mature trees, providing natural privacy and a peaceful atmosphere.
- **Potential:** Ideal for those looking to build a custom home or retreat in a tranquil, wooded environment.
- **Schools:** Located in the highly regarded **Oak Hill School System**, making it an excellent choice for families.

Enjoy the beauty and privacy of a wooded retreat while just minutes away from Marion and Wabash amenities and conveniences. This property is a rare find and offers endless possibilities for your future home.

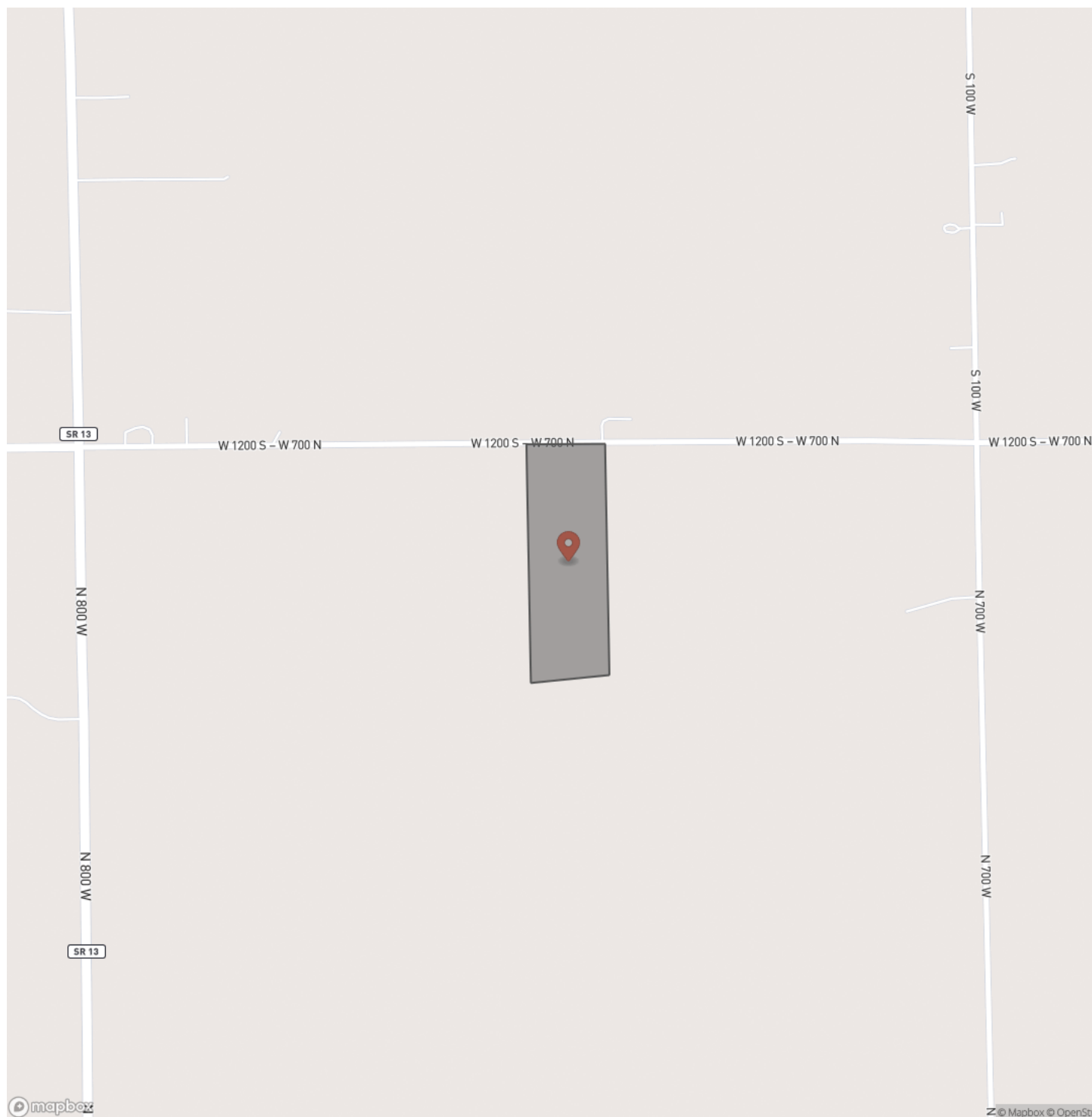
Call Chad Renbarger for a private showing [317-418-7712](tel:317-418-7712)



15+/- Acres of Private Wooded Land in the Oak Hill School District
La Fontaine, IN / Grant County

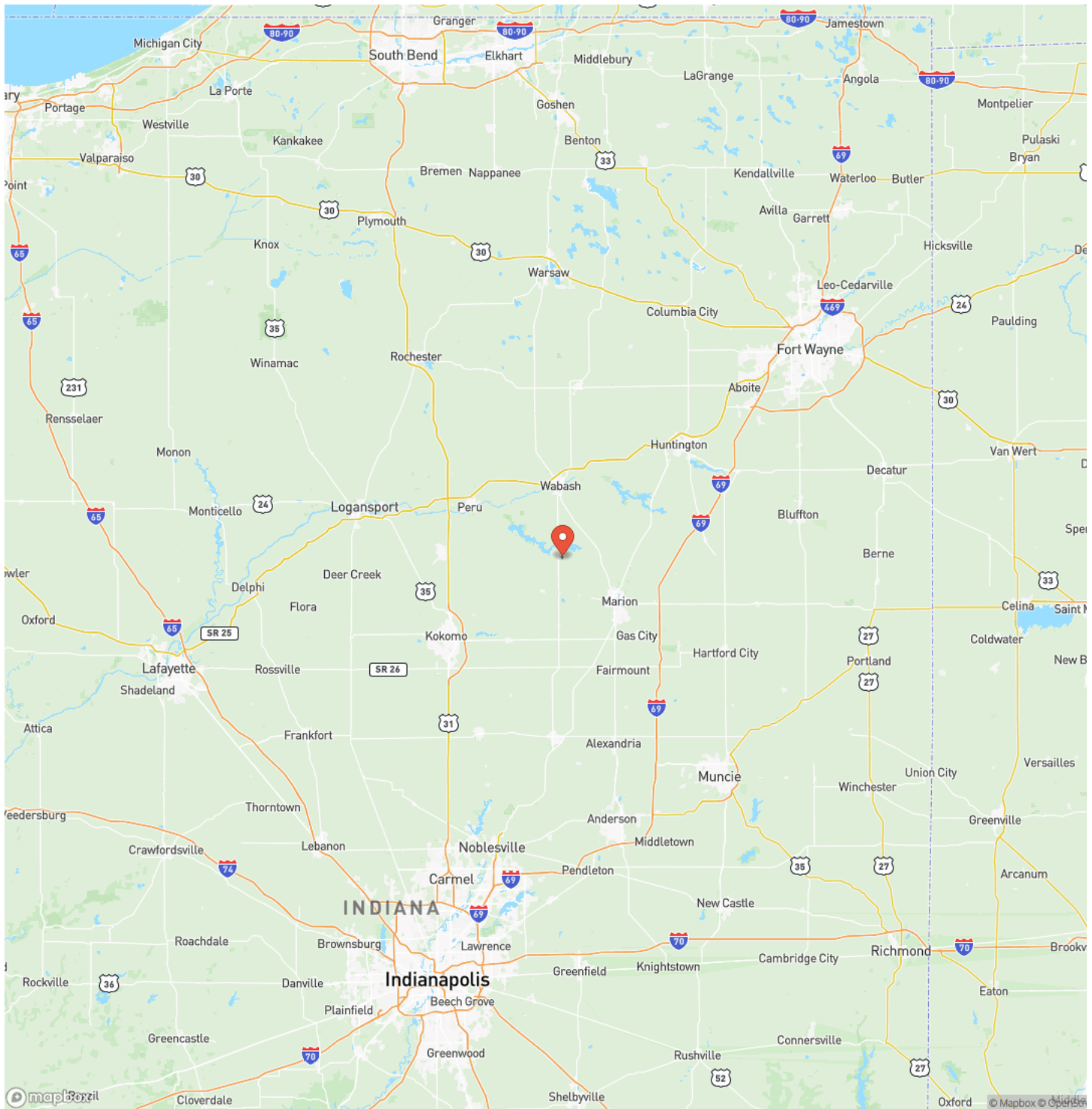


Locator Map



**15+/- Acres of Private Wooded Land in the Oak Hill School District
La Fontaine, IN / Grant County**

Locator Map



15+/- Acres of Private Wooded Land in the Oak Hill School District
La Fontaine, IN / Grant County

Satellite Map



15+/- Acres of Private Wooded Land in the Oak Hill School District La Fontaine, IN / Grant County

LISTING REPRESENTATIVE

For more information contact:



Representative

Chad Renbarger

Mobile

(317) 418-7712

Office

(317) 597-2352

Email

crenbarger@mossyoakproperties.com

Address

10925 Edgewood Dr

City / State / Zip

Fortville, IN 46040

NOTES

[illegible]

MORE INFO ONLINE:

<https://indianalandandlifestyle.com/>

This image shows a single sheet of white paper with horizontal ruling lines. The lines are evenly spaced and run across the width of the page. There are no margins, text, or other markings on the paper.



MORE INFO ONLINE:

<https://indianalandandlifestyle.com/>

DISCLAIMERS

Information in this brochure is provided solely for information purposes and does not constitute an offer to sell or advertise real estate outside the states in which broker or agent licensed. The information presented has been obtained from sources deemed to be reliable, but is not guaranteed or warranted by the agent, broker, or the sellers of these properties. This offering is subject to errors, omissions, prior sale, price change, correction or withdrawal from the market without notice. All references to age, square footage, income, expenses, acreage, carrying capacity, and land classification, etc. are approximate. Prospective buyers are chargeable with and expected to conduct their own independent investigation of the information and the property and to rely only on those results. Sellers reserve the right to accept or reject any and all offers without liability to any buyer or cooperating broker.

Maps are provided for illustration purposes only, the accuracy is not warranted. Parcels on interactive maps are not adjusted to match aerial backgrounds. This information is for reference purposes only and is not a legal document. Data maps contain errors. The seller and seller's agent are making known to all potential buyers that there may be variations between the location of the existing fence lines and the legal description of the deeded property. Seller and seller's agent make no warranties with regard to the location of the fence lines in relationship to the deeded property lines, nor does the Seller make any warranties or representations with regard to the specific acreage contained within the fenced property lines. Seller is selling the property in an "as is" condition, which includes the location of the fences as they exist. Boundaries shown on the accompanying maps are approximate, based on county parcel data. The maps are not to scale. The accuracy of the maps is not guaranteed. Prospective buyers are encouraged to verify fence lines, deeded property lines and acreages using a licensed surveyor at their own expense.



Mossy Oak Properties Indiana Land and Lifestyle

PO Box 10

Clinton, IN 47842

(765) 505-4155

<https://indianalandandlifestyle.com/>



MORE INFO ONLINE:

<https://indianalandandlifestyle.com/>