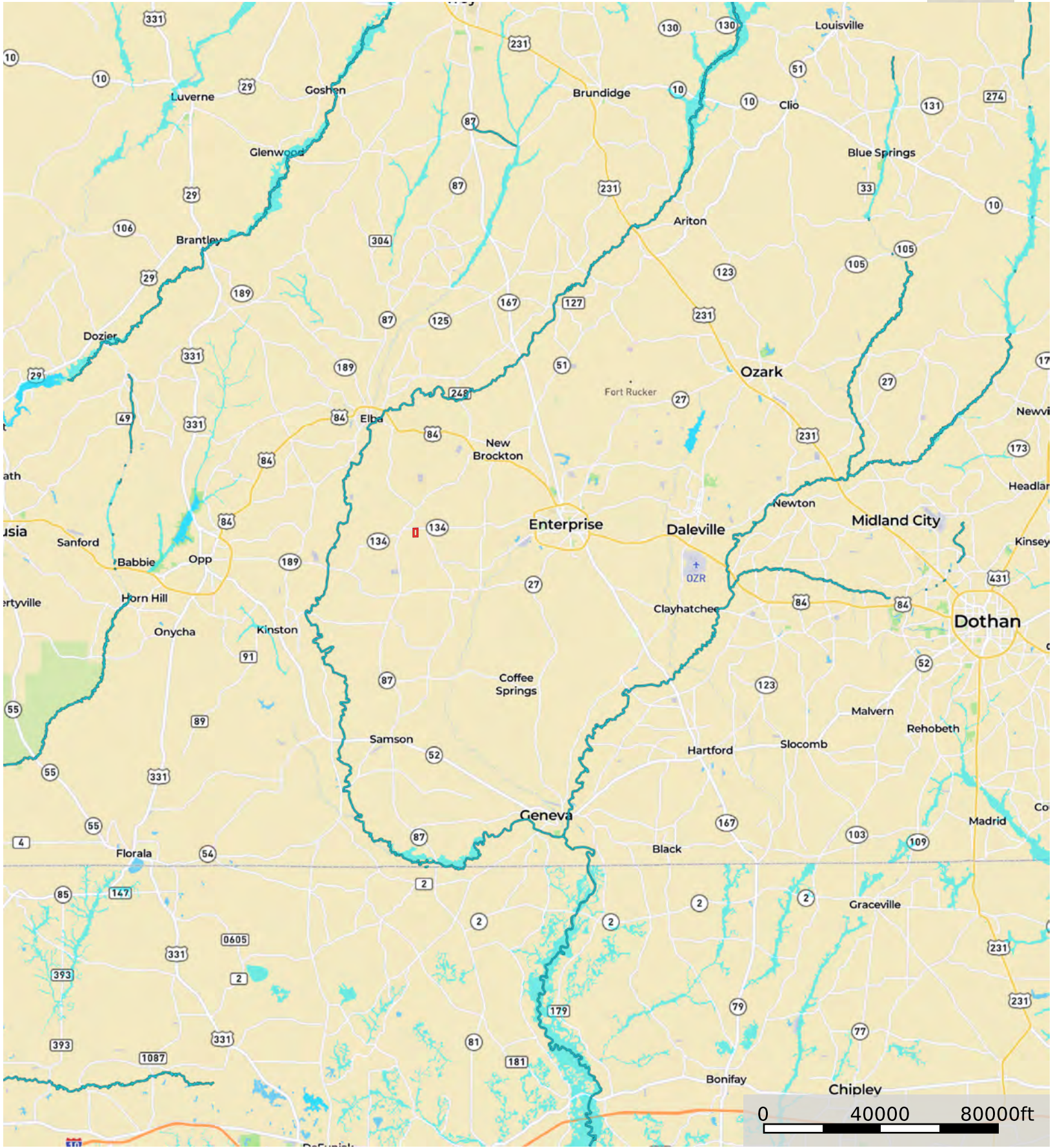
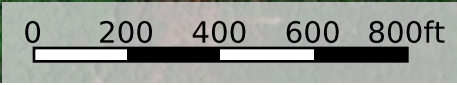
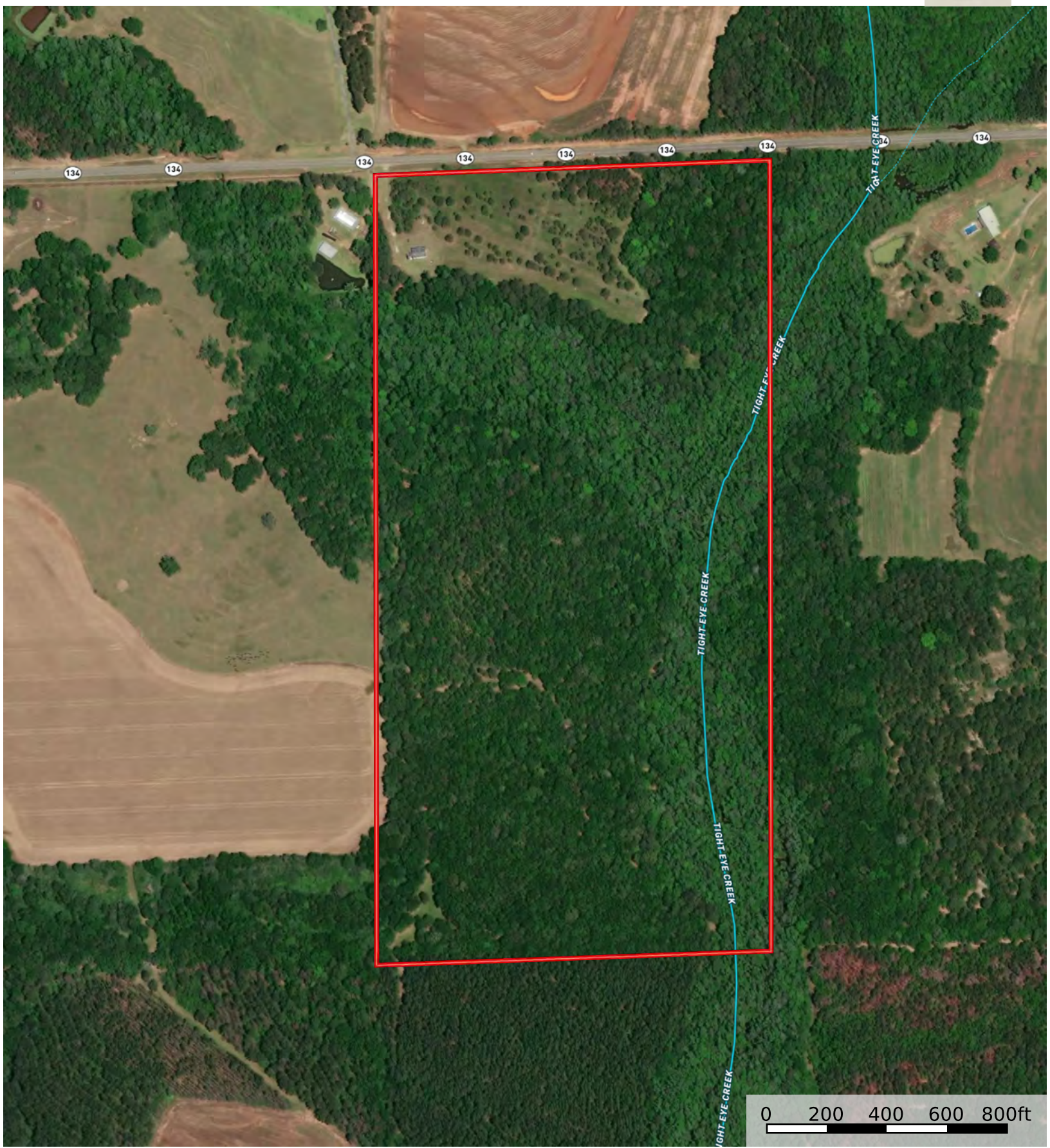


80 Ac - Coffee Co - Tight Eye Creek
Alabama, AC +/-



Boundary 1 Stream, Intermittent River/Creek Water Body

80 Ac - Coffee Co - Tight Eye Creek
Alabama, AC +/-



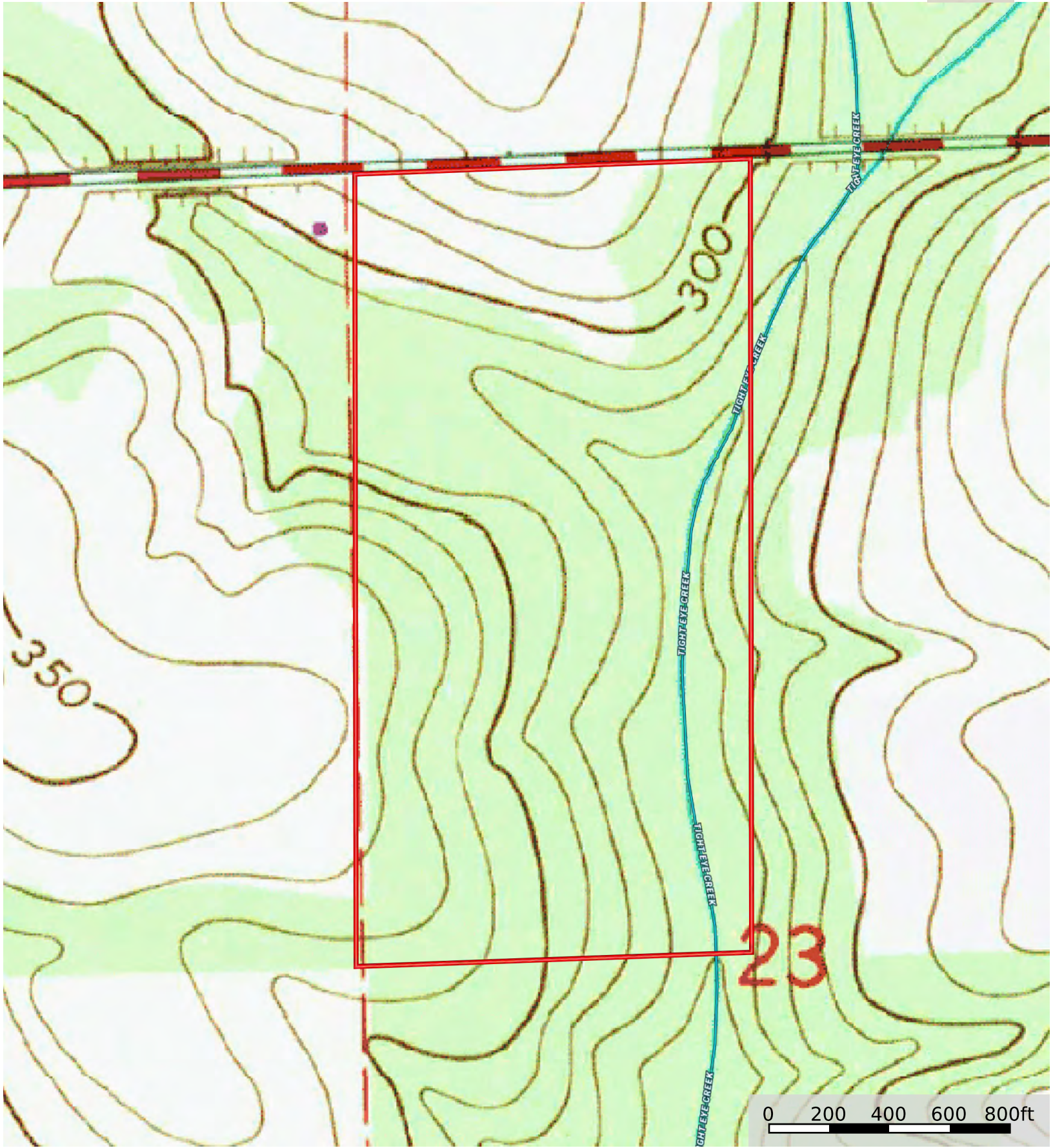
Boundary 1

Stream, Intermittent

River/Creek

Water Body

80 Ac - Coffee Co - Tight Eye Creek
Alabama, AC +/-



Boundary 1

Stream, Intermittent

River/Creek

Water Body

0 200 400 600 800ft