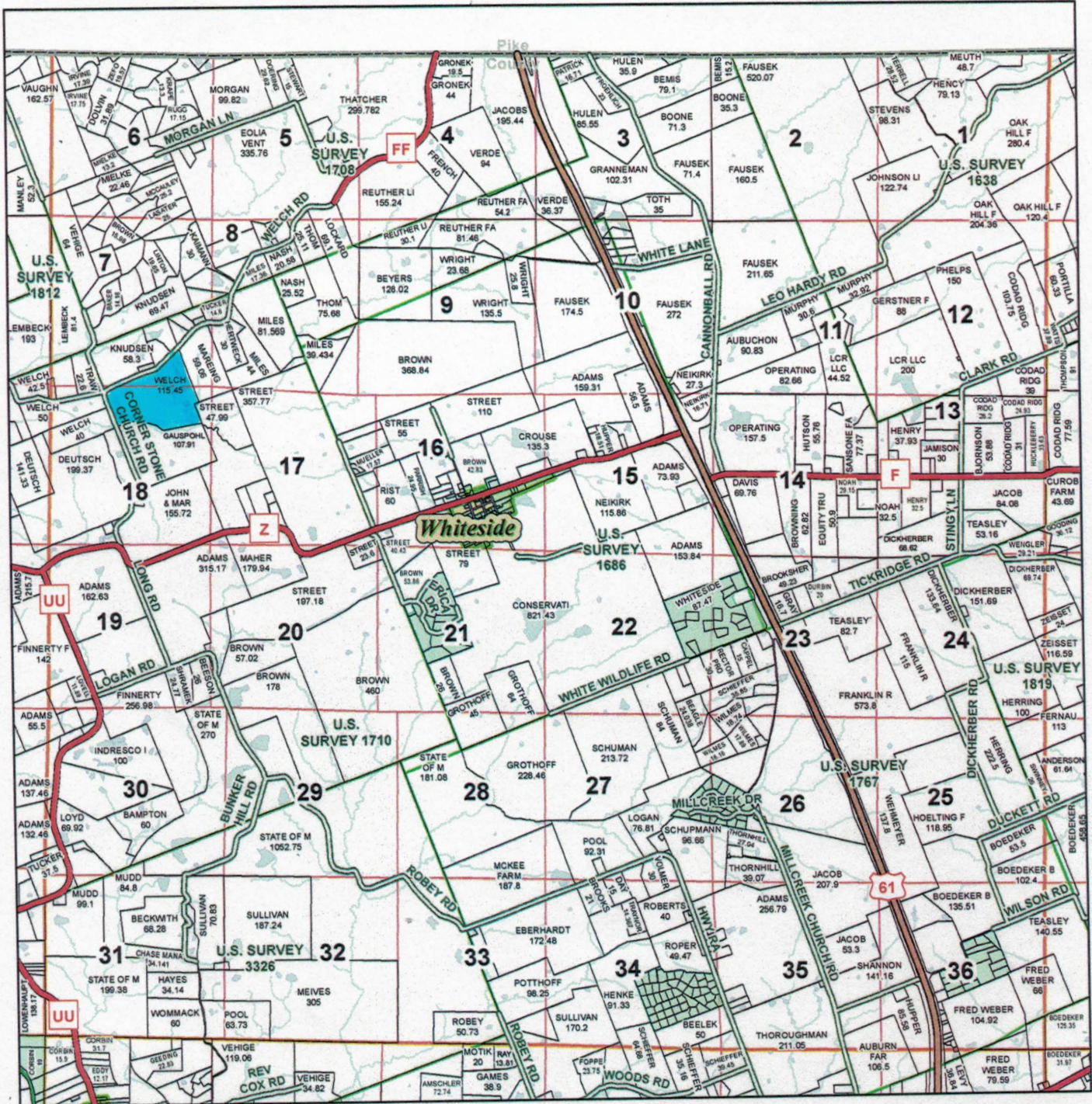


# T51N-R1W



See Page 38

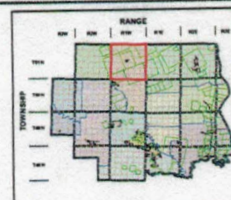
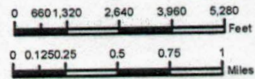
This data was primarily developed for tax purposes and is not considered survey accurate.

Lincoln County Commission  
 Dan Colbert - Presiding Commissioner  
 Eugene Galloway - First District Commissioner  
 Matt Bass - Second District Commissioner

Most parcels > 5 ac labeled

Data Courtesy Lincoln County  
 Geographic Information System  
 Kevin Bishop - Assessor / GIS Manager

GIS & Map Development By:  
**MIDLAND**  
 GIS Solutions  
 (660) 662-0050 www.midlandgis.com



Legend	
	US Highways
	ST Highways
	CO Highways
	County Boundary
	City Limits
	Township-Range
	Sections
	Political Township
	Water
	Land Ownership
	Subdivisions
	Streets
	Rail Roads
	Land Hooks
	Bridges
	Cemeteries