

0 Whispering Pines Drive, Lumberton, Texas, 77657
0 Whispering Pines Drive,
Lumberton, TX 77657

\$399,000
58.550± Acres
Hardin County



0 Whispering Pines Drive, Lumberton, Texas, 77657
Lumberton, TX / Hardin County

SUMMARY

Address

0 Whispering Pines Drive,

City, State Zip

Lumberton, TX 77657

County

Hardin County

Type

Lot, Undeveloped Land, Timberland, Hunting Land, Recreational Land

Latitude / Longitude

30.250305 / -94.236863

Acreage

58.550

Price

\$399,000

Property Website

<https://www.mockranches.com/property/0-whispering-pines-drive-lumberton-texas-77657-hardin-texas/83366/>



0 Whispering Pines Drive, Lumberton, Texas, 77657
Lumberton, TX / Hardin County

PROPERTY DESCRIPTION

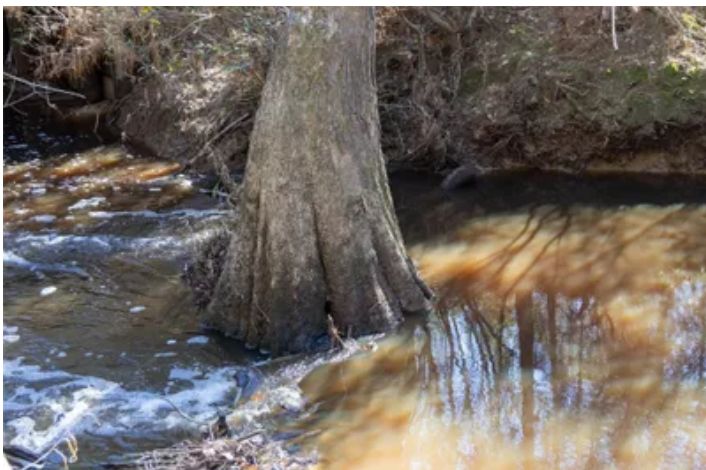
Located just outside Lumberton is this great piece of seclusion and privacy!!! 58 +/- acres to build your dream home!! Located less than 4 miles from Lumberton high school putting you still close enough to not have worry about being too far from the amenities and the highly sought schools Lumberton offers. With rolling terrain being heavily wooded and ready to be cleared to your heart's desires. Boggy Creek cuts through this tract to provide an excellent source of habitation for local wildlife and hunting as well.

Showing Instructions:

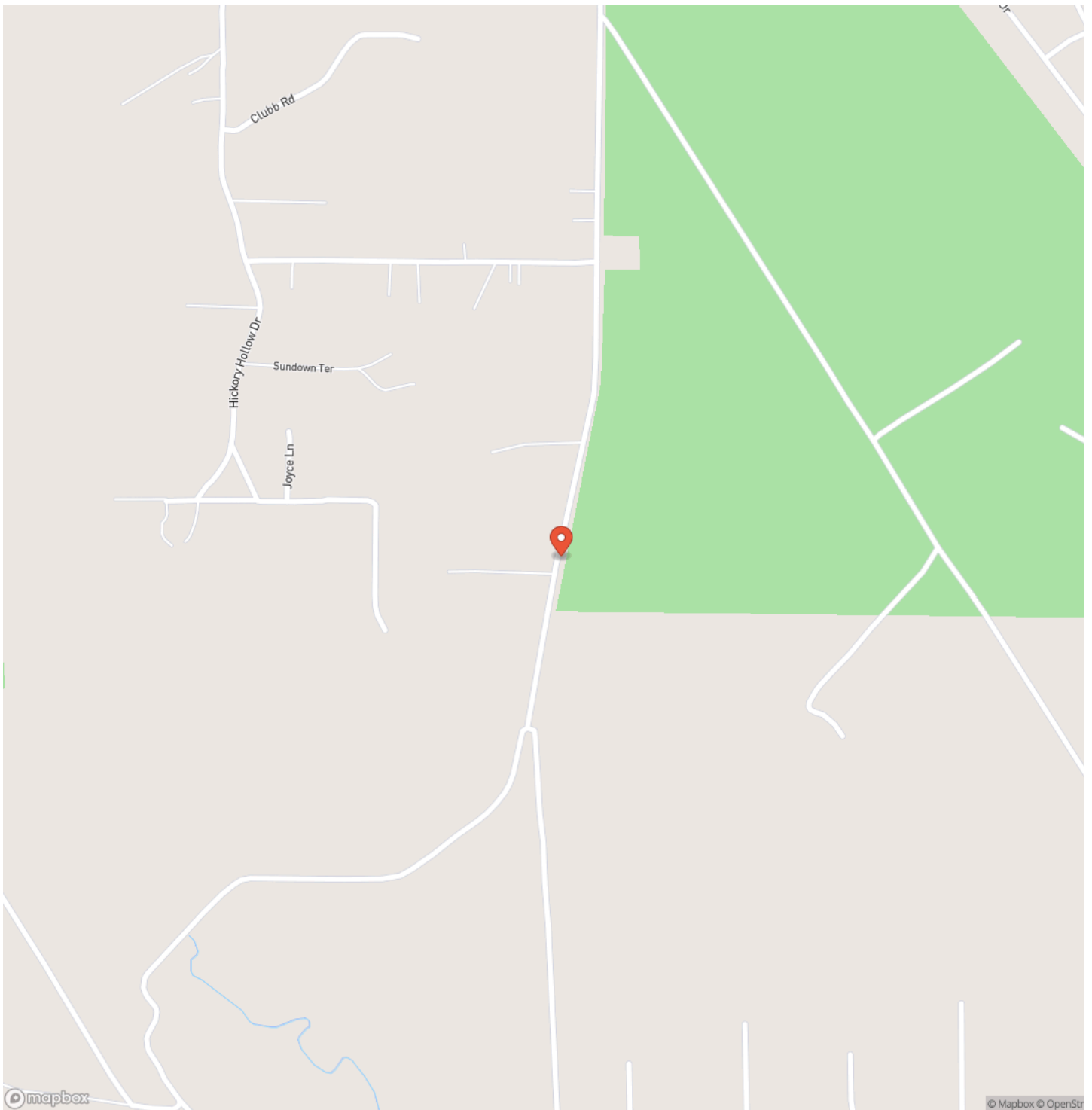
This property is marketed and shown exclusively by The Mock Ranches Group, a team with Keller Williams Realty. Please contact [281-200-2252](tel:281-200-2252) for showing information. All appointments must be made with the listing broker and be accompanied.

Notice to Buyers Agents:

Buyer agents must make first contact and be present for all showings.

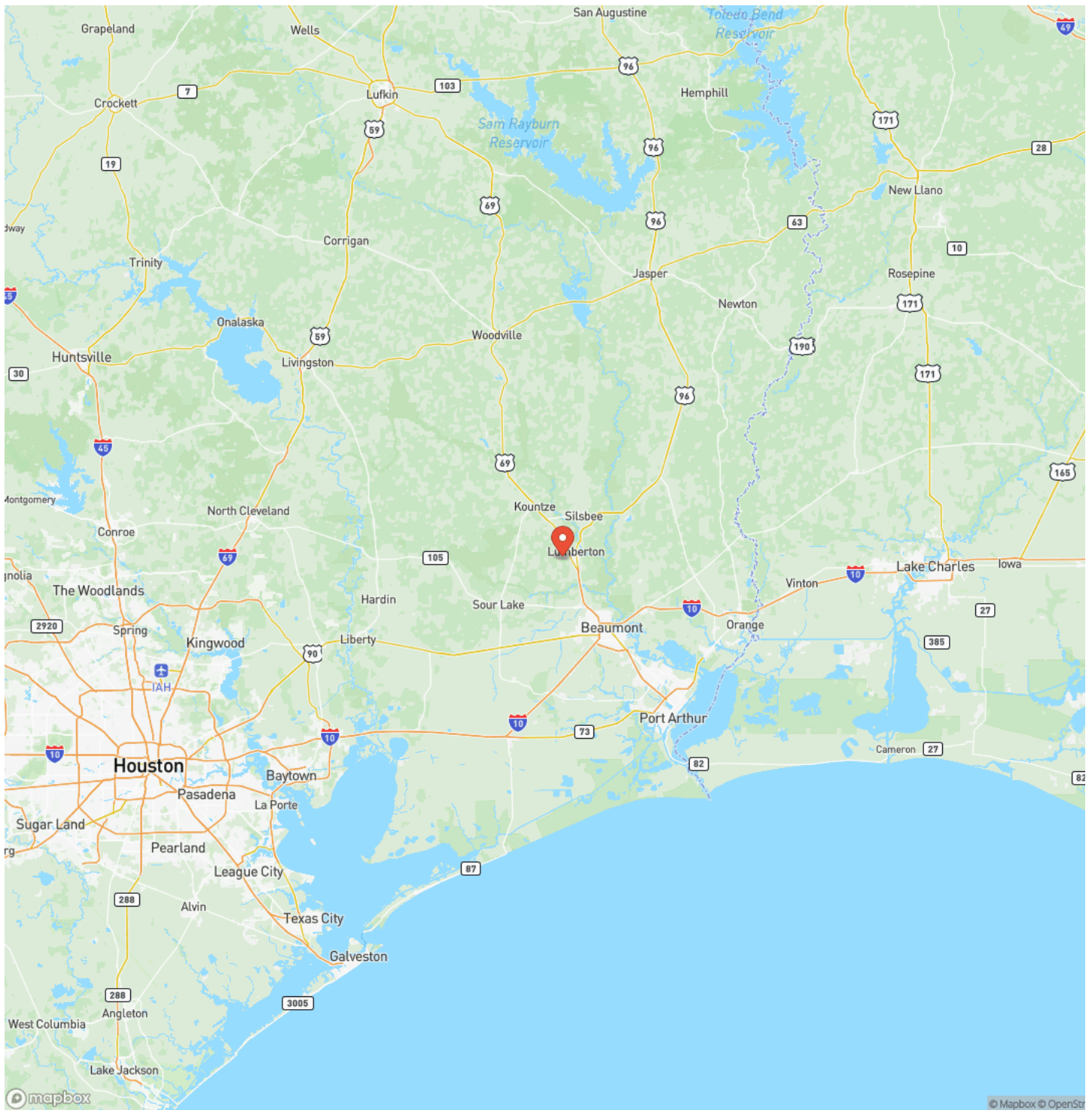


Locator Map



0 Whispering Pines Drive, Lumberton, Texas, 77657
Lumberton, TX / Hardin County

Locator Map



MORE INFO ONLINE:

Mockranches.com

0 Whispering Pines Drive, Lumberton, Texas, 77657
Lumberton, TX / Hardin County

Satellite Map



MORE INFO ONLINE:

Mockranches.com

0 Whispering Pines Drive, Lumberton, Texas, 77657
Lumberton, TX / Hardin County

LISTING REPRESENTATIVE

For more information contact:



Representative

Brandon Stephens

Mobile

(281) 615-1667

Office

(832) 220-1315

Email

Brandonstephens@mockranches.com

Address

19708 NW FRWY

City / State / Zip

NOTES

[illegible]

This image shows a blank sheet of white paper with horizontal ruling lines. The lines are evenly spaced and run across the width of the page. There are no margins, text, or other markings on the paper.

DISCLAIMERS

The information contained herein has been gathered from sources deemed reliable; however, the Mock Ranches Group, Keller Williams Realty and its associates, members, agents and employees cannot guarantee the accuracy of such information. No representation is made as to the possible investment value or type of use. Prospective buyers are urged to verify all information to their satisfaction and consult with their tax and legal advisors before making a final determination.

Real Estate buyers are hereby notified that properties in the States of Texas are subject to many forces and impacts, natural and unnatural; including, but not limited to weather related events, environmental issues, disease (e.g. Oak Wilt, Chronic Wasting Disease, or Anthrax), invasive species, illegal trespassing, previous owner actions, actions by neighbors and government actions. Prospective buyers should investigate any concerns to their satisfaction.

Mock Ranches Group at Keller Williams Realty
439 S Graham St
Stephenville, TX 76401
(512) 275-6625
Mockranches.com
