

1899 Highway 21 Highway E, Paige, Texas 78659
1899 Highway 21 Highway E,
Paige, TX 78659

\$850,000
32.150± Acres
Bastrop County



1899 Highway 21 Highway E, Paige, Texas 78659
Paige, TX / Bastrop County

SUMMARY

Address

1899 Highway 21 Highway E,

City, State Zip

Paige, TX 78659

County

Bastrop County

Type

Farms, Ranches, Lot, Recreational Land, Undeveloped Land, Commercial

Latitude / Longitude

30.17896 / -97.169973

Acreage

32.150

Price

\$850,000

Property Website

<https://www.mockranches.com/property/1899-highway-21-highway-e-paige-texas-78659-bastrop-texas/83311/>



PROPERTY DESCRIPTION

This +/-32 acres are strategically located within 45 minutes of Austin Bergstrom Airport and also within 45 minutes of major businesses such as Tesla, SpaceX, Samsung and the new Boring Co campus in Bastrop. With 830' of frontage along HWY 21 and only 2 miles from HWY 290, this location is setup for a commercial business looking for an unrestricted tract without having to pay the inflated prices of being in the city. The property is currently AG exempt so carrying costs are low, ideal for a buy and hold. If a ranchette to build your dream home is what you're looking for, this property has multiple secluded build sites, features a great pond for recreational use and boasts a myriad of different trees such as pines, pin oaks, post oaks, water oaks and red cedars. The property is fully fenced and ready for cattle. Three phase electricity traverses the front along the highway. Water is provided by AQUA and a meter is already in place. Property is in the Houston Toad Habitat.

Showing Instructions:

This property is marketed and shown exclusively by The Mock Ranches Group, a team with Keller Williams Realty. Please contact [512-275-6625](tel:512-275-6625) for showing information. All appointments must be made with the listing broker and be accompanied.

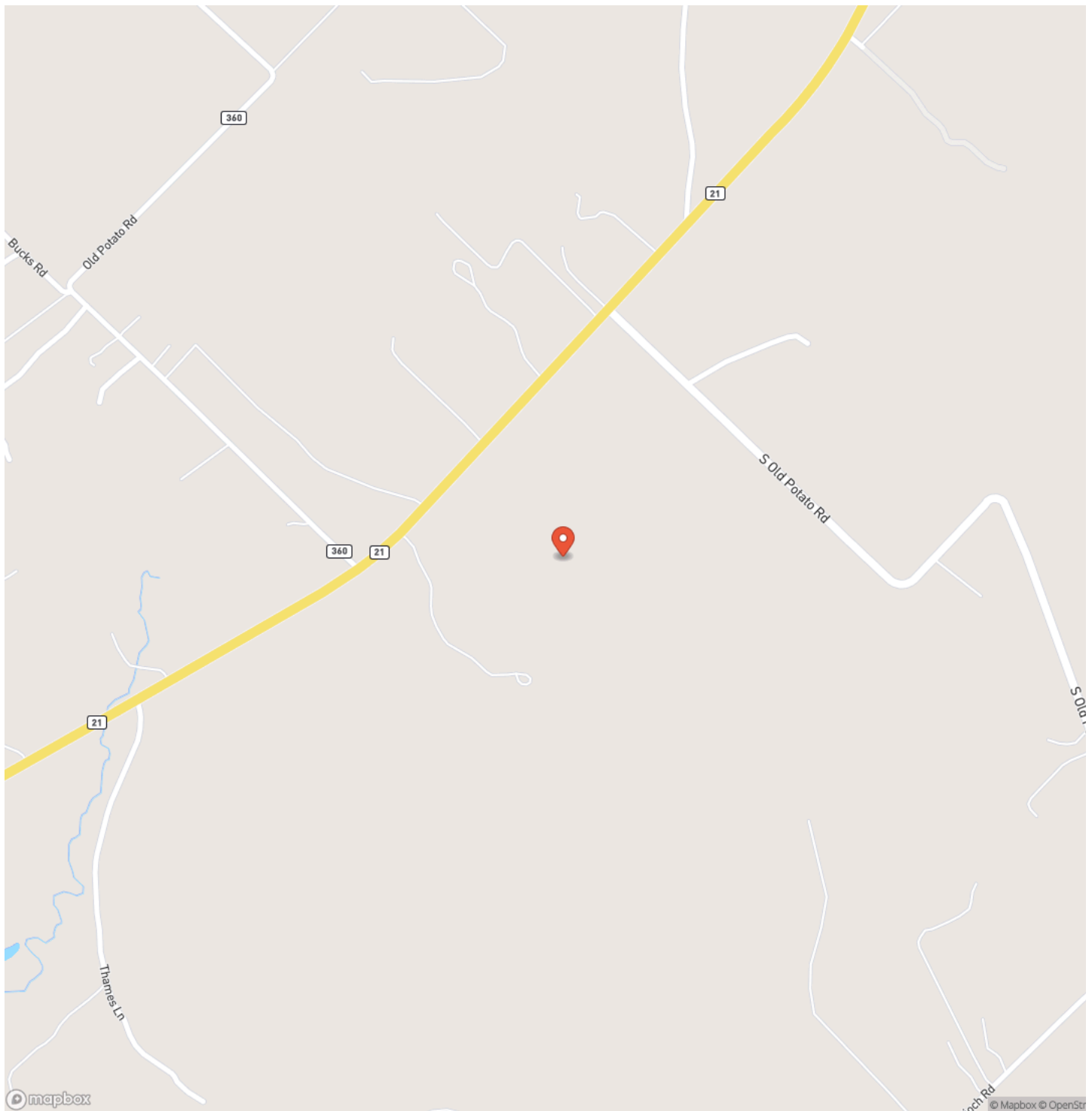
Notice to Buyers Agents:

Buyer agents must make first contact and be present for all showings.

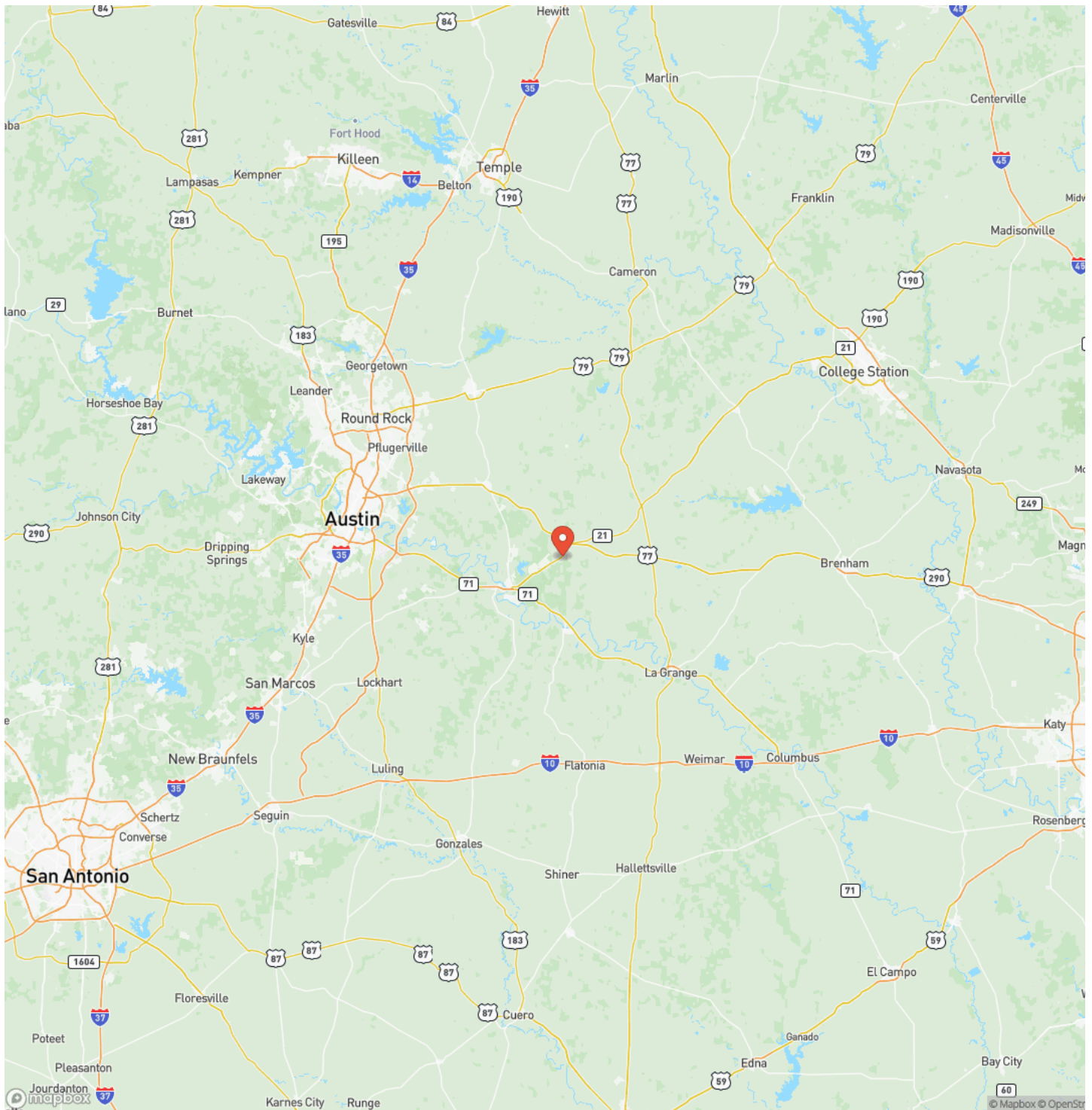
1899 Highway 21 Highway E, Paige, Texas 78659
Paige, TX / Bastrop County



Locator Map

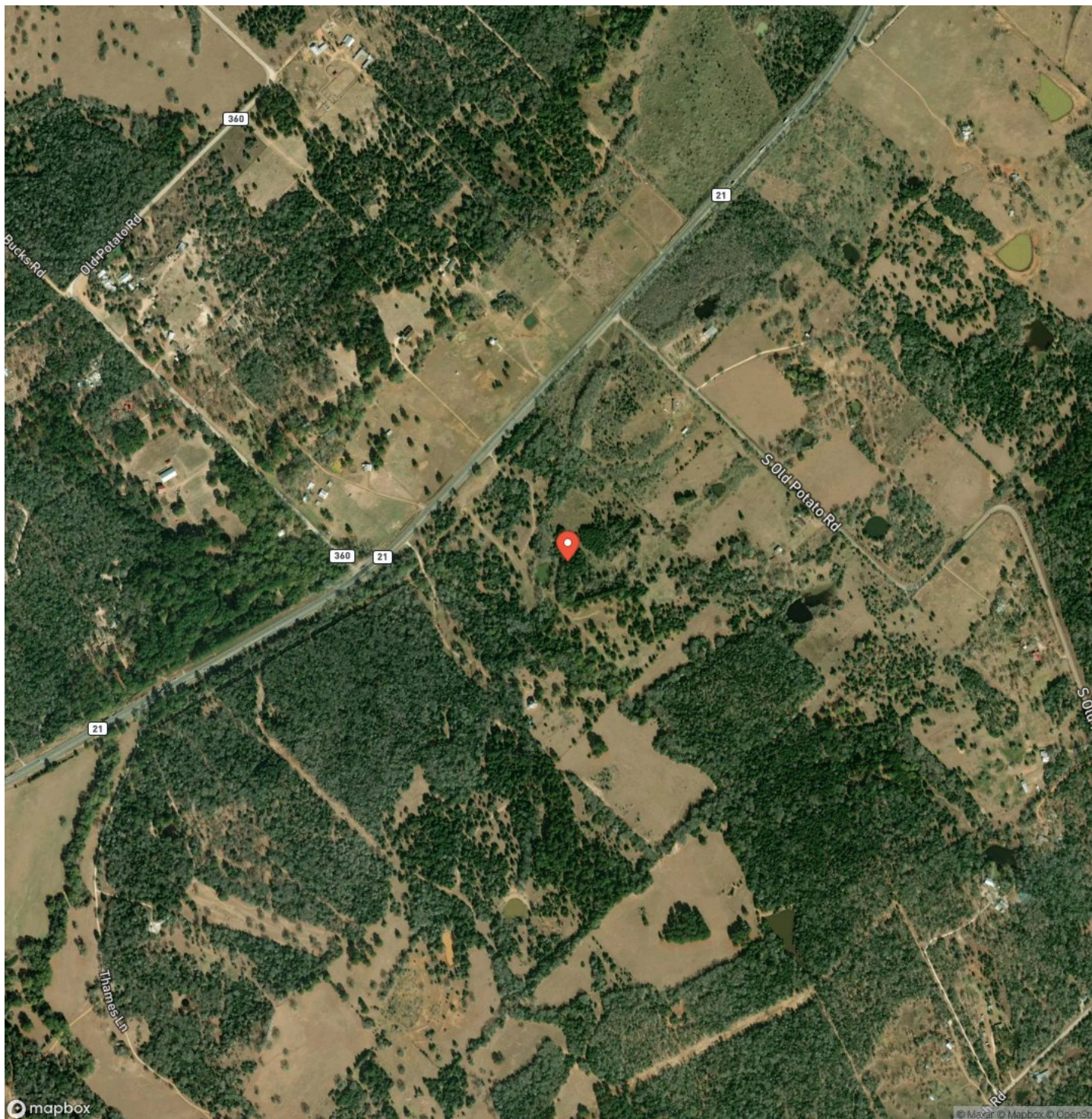


Locator Map



1899 Highway 21 Highway E, Paige, Texas 78659
Paige, TX / Bastrop County

Satellite Map



1899 Highway 21 Highway E, Paige, Texas 78659
Paige, TX / Bastrop County

LISTING REPRESENTATIVE

For more information contact:



Representative

Matt Gruetzner

Mobile

(512) 581-2042

Email

Matt.g@mockranches.com

Address

714 Chestnut St.

City / State / Zip

NOTES

This image shows a blank sheet of white paper with horizontal ruling lines. The lines are evenly spaced and extend across the width of the page. There are no margins, text, or other markings on the paper.

[illegible]

DISCLAIMERS

The information contained herein has been gathered from sources deemed reliable; however, the Mock Ranches Group, Keller Williams Realty and its associates, members, agents and employees cannot guarantee the accuracy of such information. No representation is made as to the possible investment value or type of use. Prospective buyers are urged to verify all information to their satisfaction and consult with their tax and legal advisors before making a final determination.

Real Estate buyers are hereby notified that properties in the States of Texas are subject to many forces and impacts, natural and unnatural; including, but not limited to weather related events, environmental issues, disease (e.g. Oak Wilt, Chronic Wasting Disease, or Anthrax), invasive species, illegal trespassing, previous owner actions, actions by neighbors and government actions. Prospective buyers should investigate any concerns to their satisfaction.

Mock Ranches Group at Keller Williams Realty
439 S Graham St
Stephenville, TX 76401
(512) 275-6625
Mockranches.com
