

NC 60
0 Union Grove RD
Parthenon, AR 72666

\$220,000
60± Acres
Newton County



NC 60
Parthenon, AR / Newton County

SUMMARY

Address

0 Union Grove RD

City, State Zip

Parthenon, AR 72666

County

Newton County

Type

Hunting Land, Timberland, Recreational Land, Undeveloped Land

Latitude / Longitude

35.88982 / -93.301034

Taxes (Annually)

\$45

Acreage

60

Price

\$220,000

Property Website

<https://www.mossoakproperties.com/property/nc-60/newton/arkansas/105737/>



PROPERTY DESCRIPTION

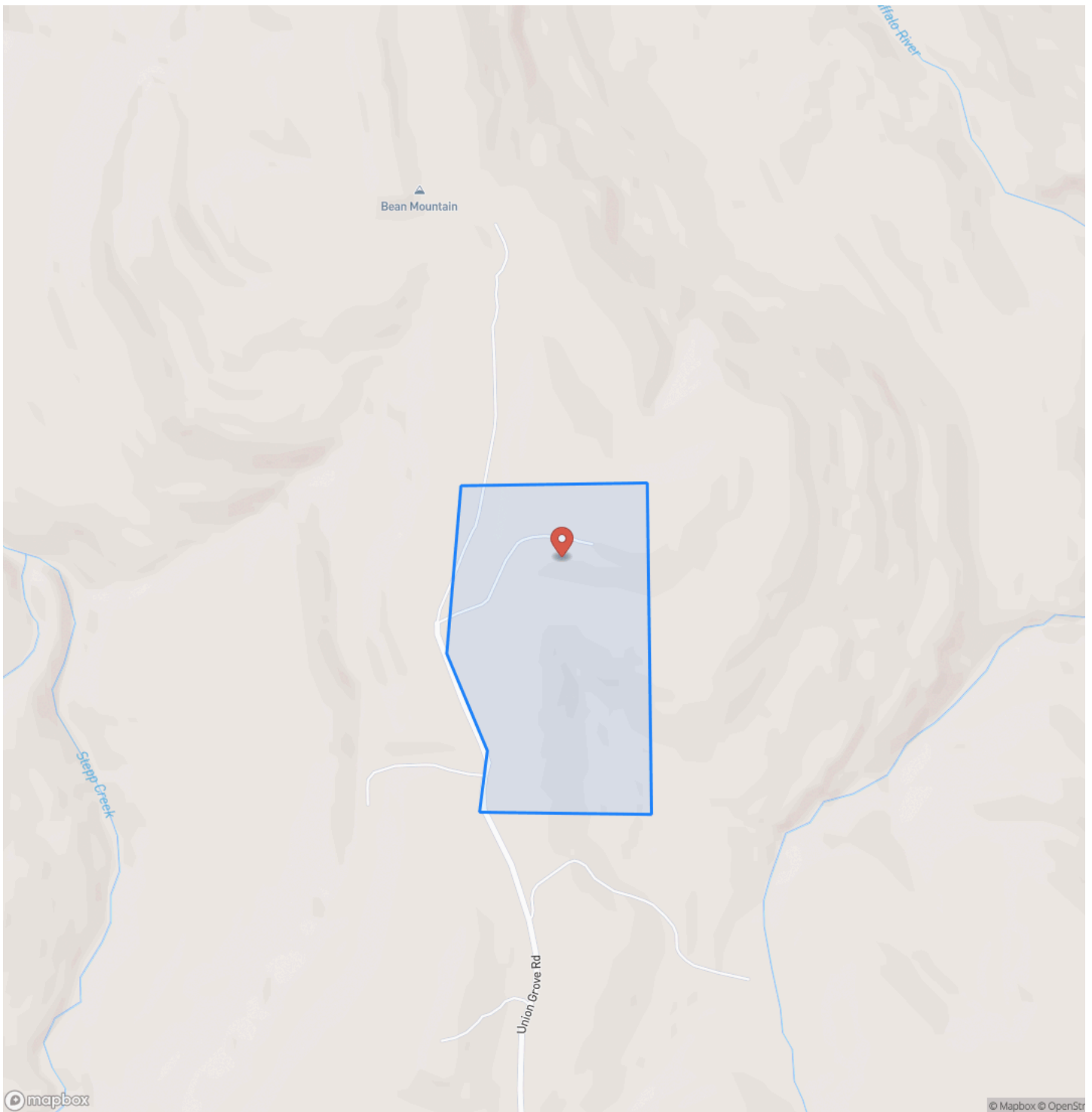
Escape to the heart of the Ozarks with this exceptional 60-acre tract in Newton County, Arkansas, just outside the quiet community of Nail. Surrounded by National Forest on two sides, this property offers unmatched privacy, abundant wildlife, and direct access to thousands of acres of public land for hiking, hunting, horseback riding, and exploring.

The land features a well-established network of interior roads and trails, making it easy to navigate the property by truck, ATV, or horseback. Multiple scenic building sites offer breathtaking long-range mountain views and the perfect setting for a cabin, hunting retreat, or full-time homestead.

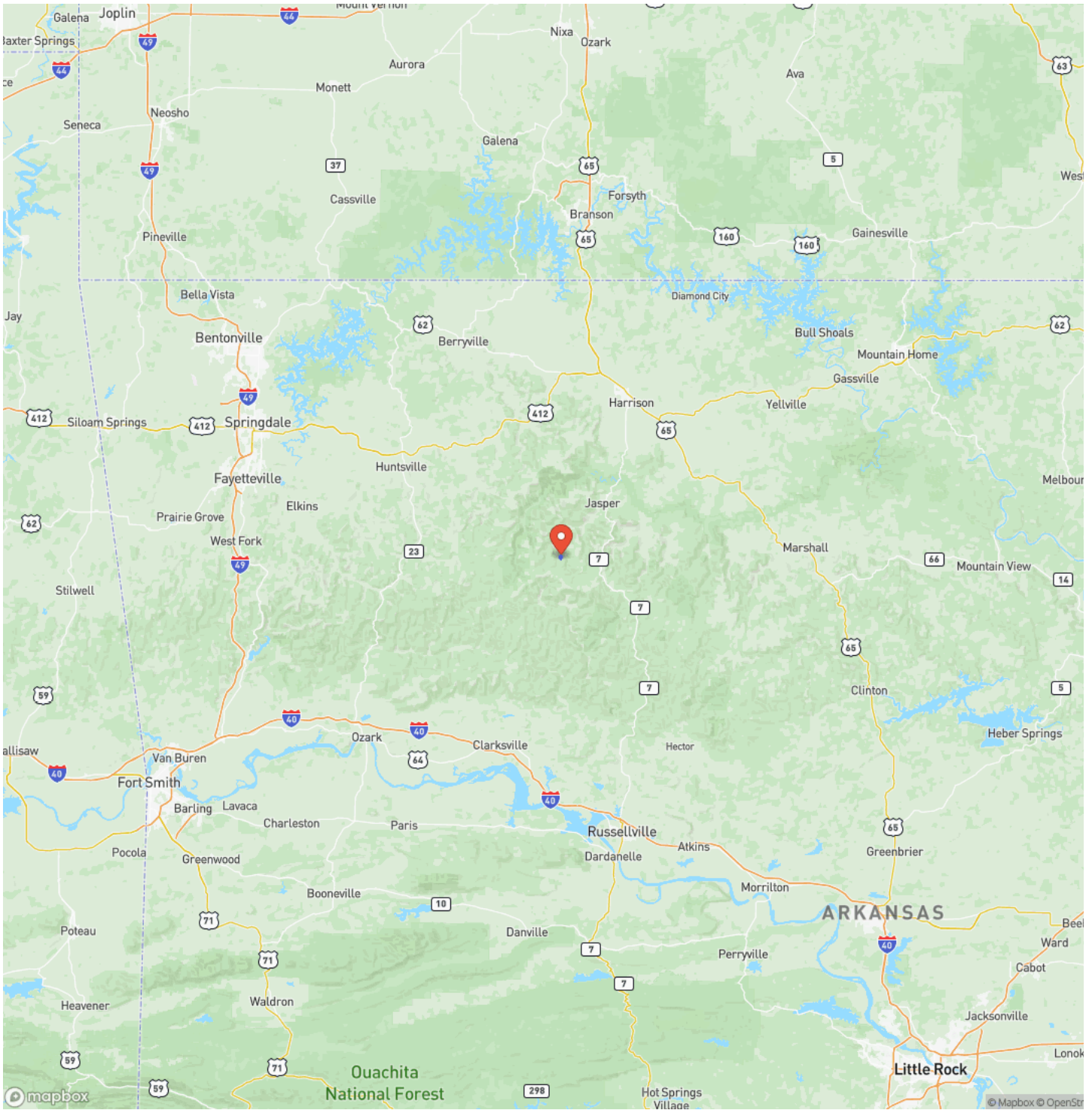
Despite its secluded feel, the property has good year-round access and is conveniently located within a short drive of the Buffalo National River and other Ozark attractions. Whether you're looking for a recreational getaway, hunting property, or private piece of Arkansas mountain land, this tract delivers beauty, usability, and rare National Forest adjacency.



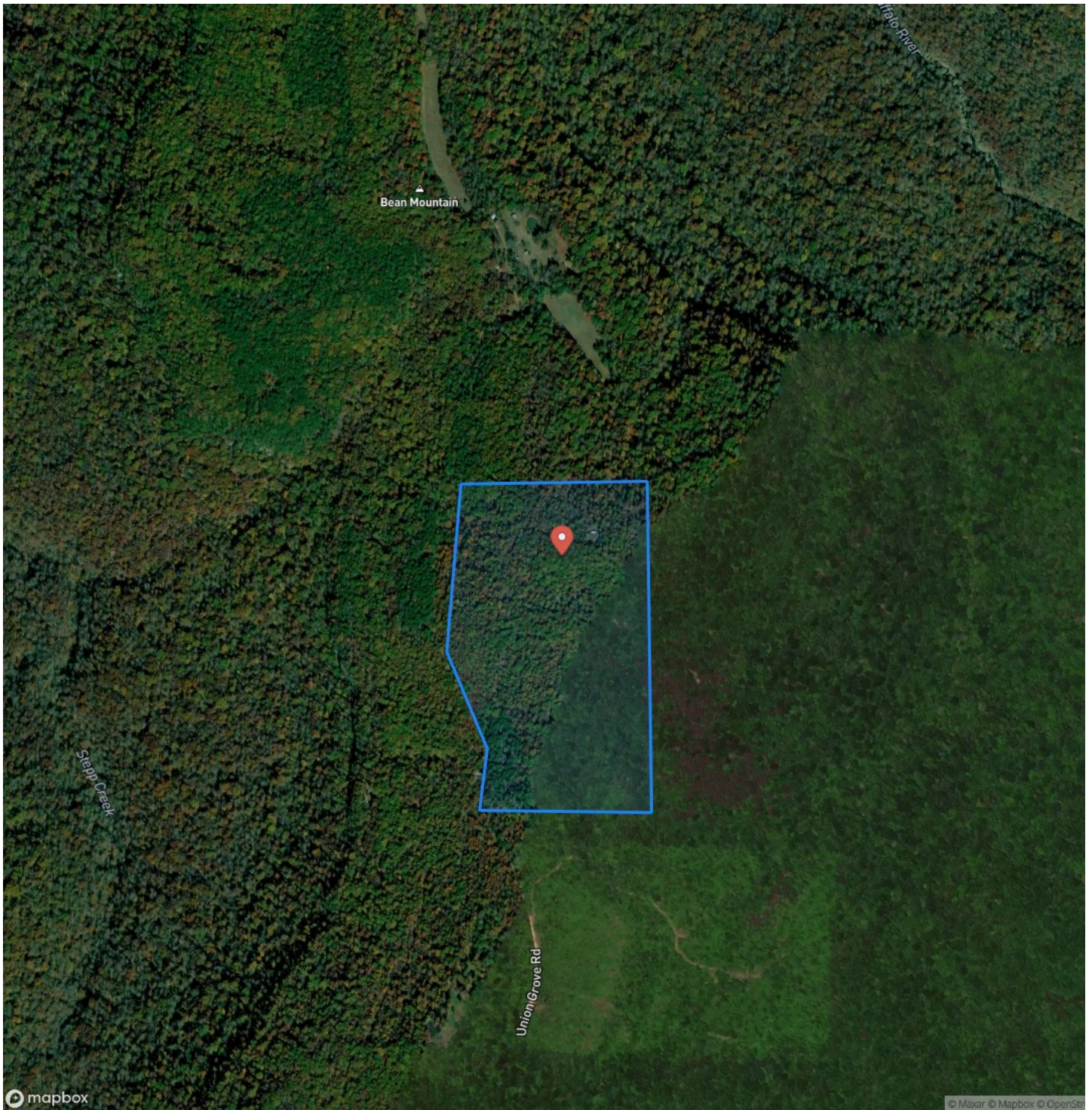
Locator Map



Locator Map



Satellite Map



DISCLAIMERS

Neither the seller, Mossy Oak Properties Land & Home (MOPLH), their subsidiaries, affiliates nor representatives warrant the accuracy, adequacy or completeness of any information contained herein regarding the property, its condition, boundaries, access, acreage, or timber stand information. Maps, timber evaluations and all information contained herein is provided "AS IS," as a courtesy to potential buyers. Potential buyers should make their own determination regarding the accuracy of the information provided. Potential buyer's agent(s) must be identified on first contact with MOPLH and must accompany the potential buyer on showings. Selling brokerages must have an executed Buyer agency agreement prior to contact with listing agent/brokerage, which spells out specifically selling brokerage commission source. Co-brokerage agreements between listing and selling brokerage are required to verify any commission split. Otherwise, the fee participation will be at the sole discretion of MOPLH. All property is subject to change, withdrawal, or prior sale. MOPLH expressly disclaims liability for errors or omissions and does not assume liability for typographical errors, misprints, nor for misinformation that may have been given to us.

Any person viewing this marketing material is considered a prospective buyer for the subject property. Should a prospective buyer or its agents choose to inspect the property, they do so at their own risk and assume all liability and shall indemnify Seller and its agents against any and all claims, demands or causes of action, of every kind, nature and description relating to its access to or presence on the property.



Mossy Oak Properties Land and Home
819 Lakewood Road
Camden, AR 71701
(870) 807-6731
<https://moplandandhome.com/>

