

Western Grove acreage with large pond
00 123
Western Grove, AR 72685

\$180,000
22,500± Acres
Newton County



Western Grove acreage with large pond

Western Grove, AR / Newton County

SUMMARY

Address

00 123

City, State Zip

Western Grove, AR 72685

County

Newton County

Type

Recreational Land

Latitude / Longitude

36.087423 / -92.967989

Taxes (Annually)

42

Dwelling Square Feet

0

Acreage

22.500

Price

\$180,000

Property Website

<https://www.mossyoakproperties.com/property/western-grove-acreage-with-large-pond-newton-arkansas/84668/>



Western Grove acreage with large pond Western Grove, AR / Newton County

PROPERTY DESCRIPTION

22.5 Acres of Prime Pastureland – Western Grove AR, Newton County Scenic Farm Setting Just Minutes from the Buffalo River

Discover the perfect blend of natural beauty and rural opportunity with this 22.5-acre parcel located just off HWY 123, and only 2 miles to US HWY 65. Whether you're looking for a peaceful homestead, a productive farm, or recreational getaway, this property offers endless potential.

The land features lush, open pasture ideal for cattle, horses, or hay production, and is fully fenced on three sides. A large pond provides year-round water for livestock and is great for fishing. With its gently rolling terrain and stunning Ozark Mountain views, this is a truly picturesque setting.

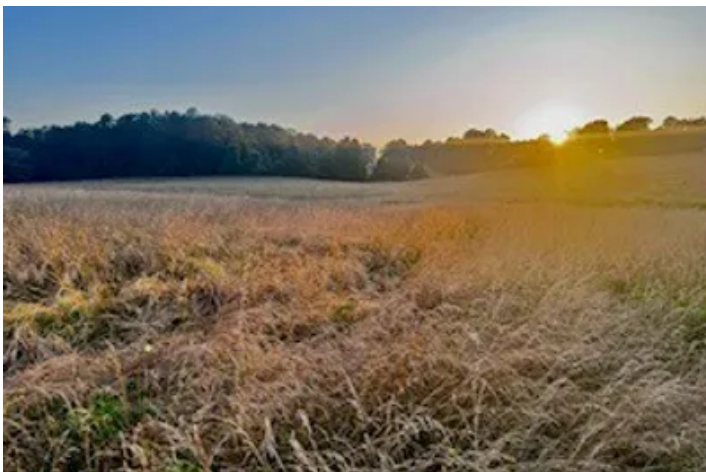
Conveniently located only 30 minutes from Harrison and its commercial passenger airport and just a short drive to multiple Buffalo National River access points makes this a great base for outdoor enthusiasts. Whether you're interested in hunting, farming, ranching, or simply enjoying the peace and quiet of the countryside, this property delivers.

Highlights:

- 22.5 acres of prime, fenced pastureland
- Large pond for livestock and recreation
- Beautiful views and peaceful surroundings
- Just off Highway 123 – easy access
- Ideal for cattle, horses, or hobby farm
- Excellent hunting and fishing potential
- Close to Western Grove and the Buffalo River
- 30 minutes to Harrison and airport access

This is a rare opportunity to own a versatile piece of land in a highly desirable location. Call today to schedule your private showing!

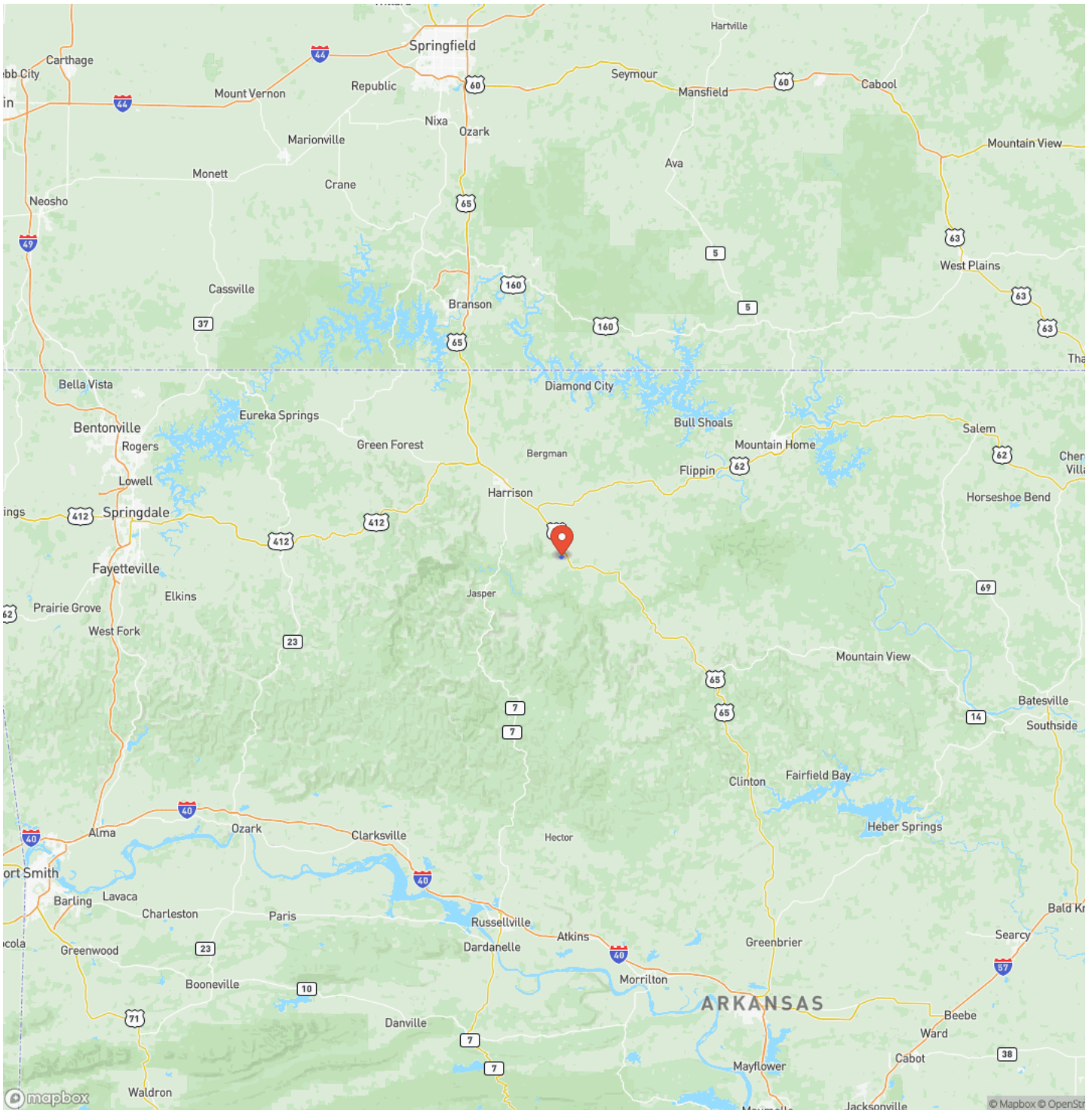
Western Grove acreage with large pond
Western Grove, AR / Newton County



Locator Map



Locator Map



Satellite Map



Western Grove acreage with large pond
Western Grove, AR / Newton County

LISTING REPRESENTATIVE

For more information contact:



Representative

Matt Heft

Mobile

(870) 688-8614

Office

(870) 807-6731

Email

matth@mossyoakproperties.com

Address

6761 HWY 5

City / State / Zip

NOTES

This image shows a blank sheet of white paper with horizontal ruling lines. The lines are evenly spaced and run across the width of the page. There are no margins, text, or other markings on the paper.

This image shows a full page of white paper with horizontal ruling lines. The lines are evenly spaced and extend across the width of the page. There are no margins, text, or other markings on the paper.



MORE INFO ONLINE:
MossyOakProperties.com

DISCLAIMERS

Neither the seller, Mossy Oak Properties Land & Home (MOPLH), their subsidiaries, affiliates nor representatives warrant the accuracy, adequacy or completeness of any information contained herein regarding the property, its condition, boundaries, access, acreage, or timber stand information. Maps, timber evaluations and all information contained herein is provided "AS IS," as a courtesy to potential buyers. Potential buyers should make their own determination regarding the accuracy of the information provided. Potential buyer's agent(s) must be identified on first contact with MOPLH and must accompany the potential buyer on showings. Selling brokerages must have an executed Buyer agency agreement prior to contact with listing agent/brokerage, which spells out specifically selling brokerage commission source. Co-brokerage agreements between listing and selling brokerage are required to verify any commission split. Otherwise, the fee participation will be at the sole discretion of MOPLH. All property is subject to change, withdrawal, or prior sale. MOPLH expressly disclaims liability for errors or omissions and does not assume liability for typographical errors, misprints, nor for misinformation that may have been given to us.

Any person viewing this marketing material is considered a prospective buyer for the subject property. Should a prospective buyer or its agents choose to inspect the property, they do so at their own risk and assume all liability and shall indemnify Seller and its agents against any and all claims, demands or causes of action, of every kind, nature and description relating to its access to or presence on the property

Mossy Oak Properties Land and Home
819 Lakewood Road
Camden, AR 71701
(870) 807-6731
MossyOakProperties.com

