

**Mountain Magic**  
14343 HWY 5  
Mountain View, AR 72560

**\$439,000**  
6.570± Acres  
Stone County





**Mountain Magic**  
**Mountain View, AR / Stone County**

---

**SUMMARY**

**Address**

14343 HWY 5

**City, State Zip**

Mountain View, AR 72560

**County**

Stone County

**Type**

Residential Property, Hunting Land, Recreational Land, Timberland

**Latitude / Longitude**

35.830228 / -92.055496

**Taxes (Annually)**

900

**Dwelling Square Feet**

1400

**Bedrooms / Bathrooms**

3 / 2

**Acreage**

6.570

**Price**

\$439,000

**Property Website**

<https://www.mossoakproperties.com/property/mountain-magic-stone-arkansas/86171/>



## Mountain Magic Mountain View, AR / Stone County

---

### **PROPERTY DESCRIPTION**

#### **Charming Furnished Custom Home on 6.57 Acres – Just 3 Miles from Mountain View, AR**

Welcome to your dream getaway in the heart of the Ozarks! This beautifully crafted **custom home**, built in 2019, offers **1,400 sq ft** of comfortable, fully furnished living space, perfectly nestled on **6.57 private acres** just minutes from the vibrant town of **Mountain View, Arkansas**.

Enjoy **breathtaking views** and a tranquil, wooded setting teeming with **abundant wildlife**, all while being just 3 miles from local shopping, dining, live music, swimming, and world-class fishing.

Step inside to find a cozy, well-appointed interior with an open floor plan and modern touches throughout. The home comes **move-in ready**, with quality furnishings and thoughtful design features that provide both comfort and style.

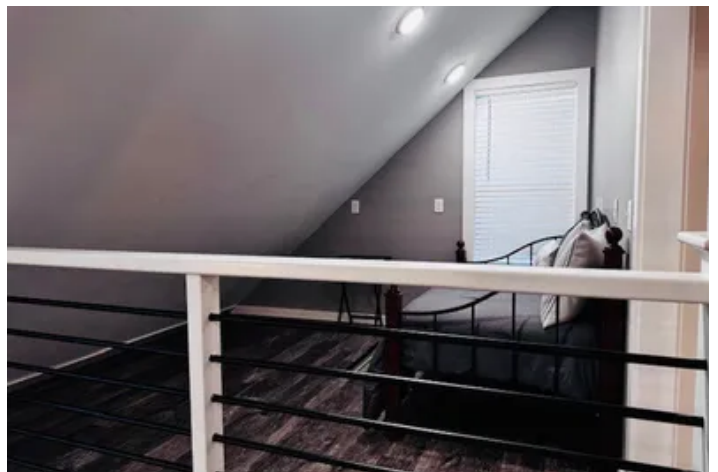
Relax on the **spacious front and back porches**, perfect for sipping your morning coffee, enjoying evening sunsets, or entertaining guests while soaking in the peaceful surroundings.

Whether you're looking for a full-time residence, weekend retreat, or investment property, this home offers the best of **quiet country living with easy access to town amenities**.

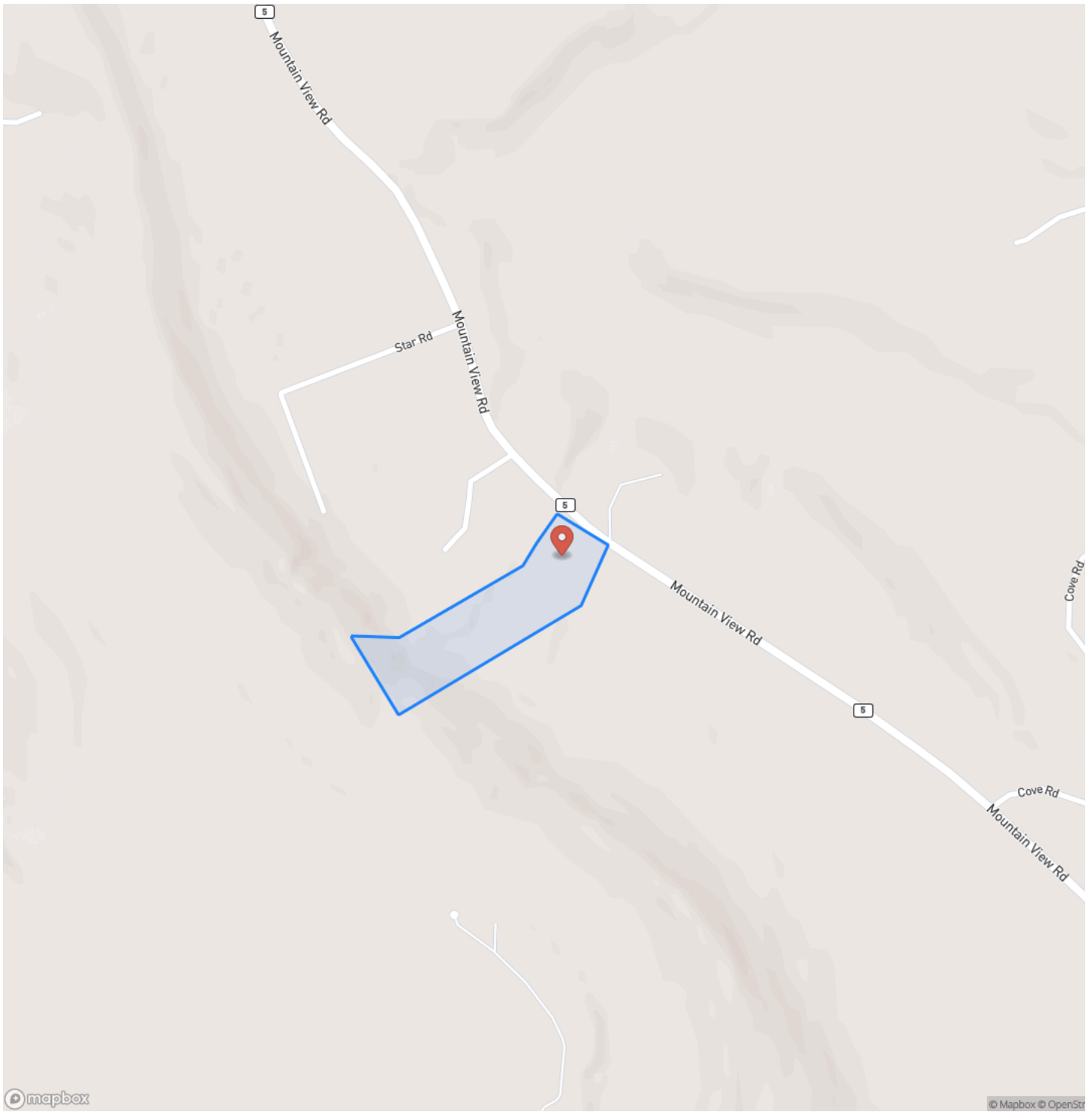
Don't miss your chance to own this slice of paradise in the Ozarks!



**Mountain Magic**  
**Mountain View, AR / Stone County**

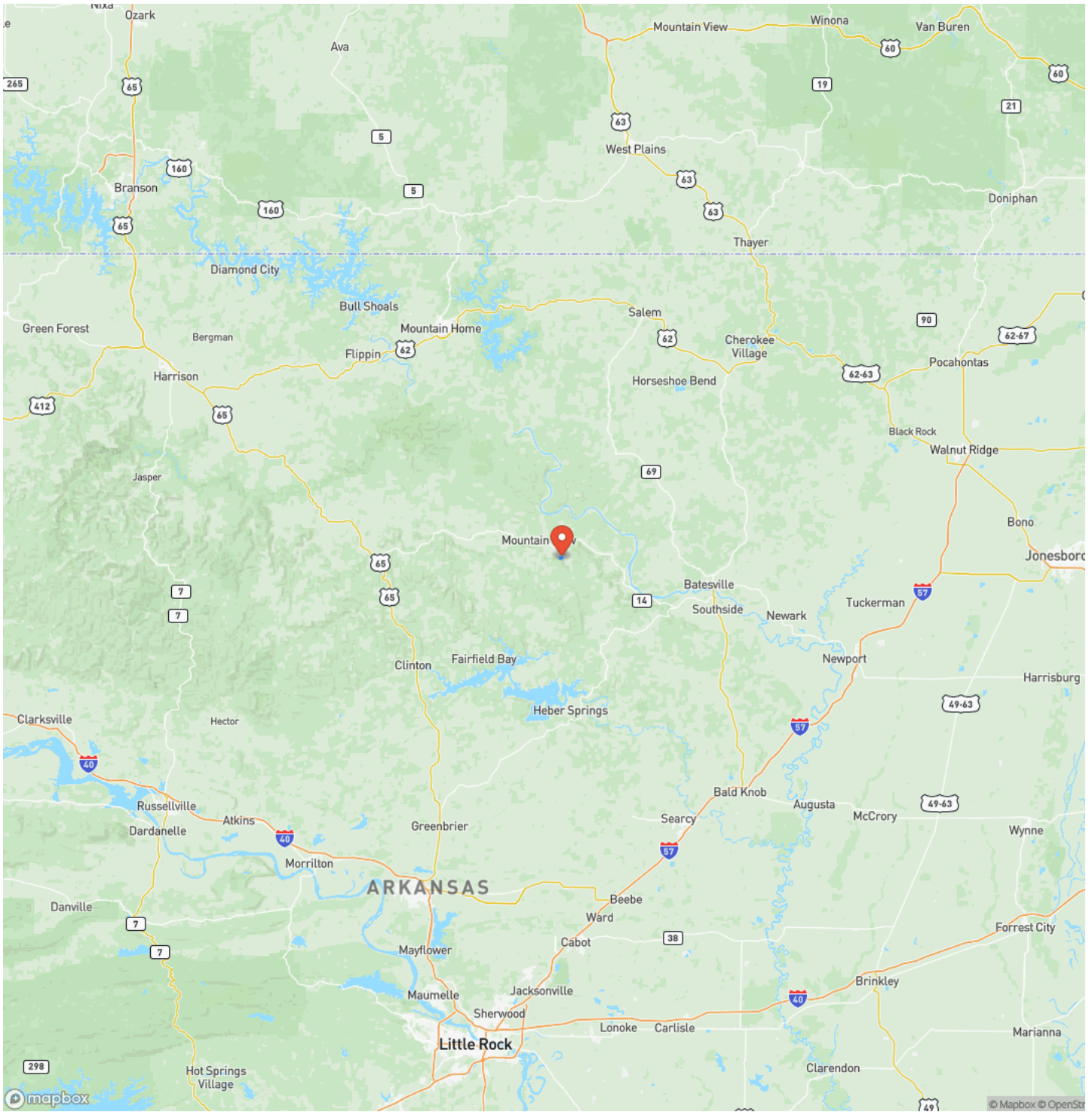


# Locator Map



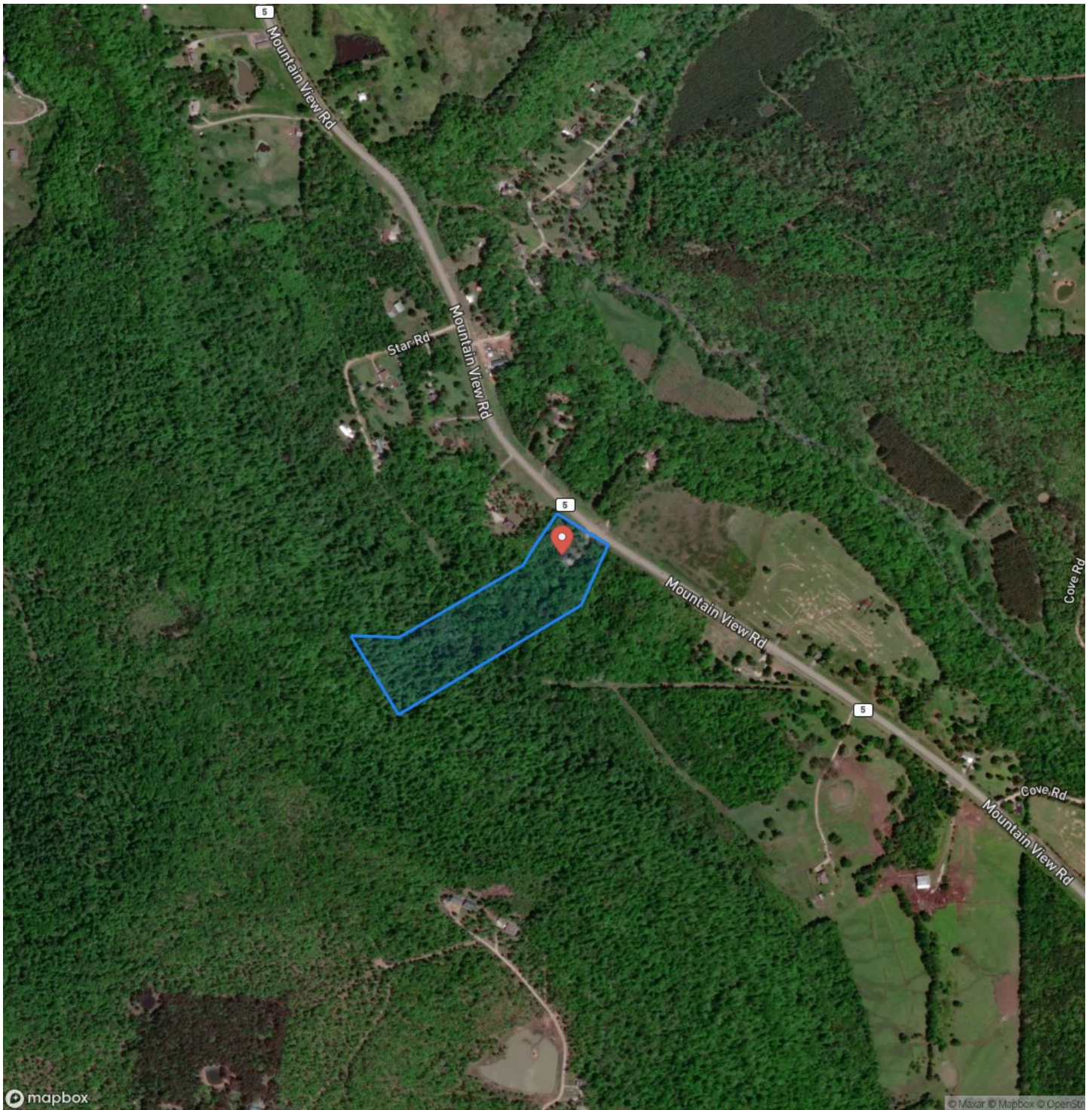


# Locator Map





## Satellite Map









## **DISCLAIMERS**

Neither the seller, Mossy Oak Properties Land & Home (MOPLH), their subsidiaries, affiliates nor representatives warrant the accuracy, adequacy or completeness of any information contained herein regarding the property, its condition, boundaries, access, acreage, or timber stand information. Maps, timber evaluations and all information contained herein is provided "AS IS," as a courtesy to potential buyers. Potential buyers should make their own determination regarding the accuracy of the information provided. Potential buyer's agent(s) must be identified on first contact with MOPLH and must accompany the potential buyer on showings. Selling brokerages must have an executed Buyer agency agreement prior to contact with listing agent/brokerage, which spells out specifically selling brokerage commission source. Co-brokerage agreements between listing and selling brokerage are required to verify any commission split. Otherwise, the fee participation will be at the sole discretion of MOPLH. All property is subject to change, withdrawal, or prior sale. MOPLH expressly disclaims liability for errors or omissions and does not assume liability for typographical errors, misprints, nor for misinformation that may have been given to us.

Any person viewing this marketing material is considered a prospective buyer for the subject property. Should a prospective buyer or its agents choose to inspect the property, they do so at their own risk and assume all liability and shall indemnify Seller and its agents against any and all claims, demands or causes of action, of every kind, nature and description relating to its access to or presence on the property



---

**Mossy Oak Properties Land and Home**  
819 Lakewood Road  
Camden, AR 71701  
(870) 807-6731  
[MossyOakProperties.com](http://MossyOakProperties.com)

---

