

50 acre Glade
1500 Moscoe Love Rd
Saint Joe, AR 72615

\$149,000
52.310± Acres
Searcy County



50 acre Glade
Saint Joe, AR / Searcy County

SUMMARY

Address

1500 Moscoe Love Rd

City, State Zip

Saint Joe, AR 72615

County

Searcy County

Type

Recreational Land, Hunting Land, Ranches, Timberland

Latitude / Longitude

36.03332 / -92.854264

Acreage

52.310

Price

\$149,000

Property Website

<https://www.mossyoakproperties.com/property/50-acre-glade-searcy-arkansas/76195/>



50 acre Glade
Saint Joe, AR / Searcy County

PROPERTY DESCRIPTION

Secluded 52-Acre Property in Searcy County, AR - A True Outdoor Paradise

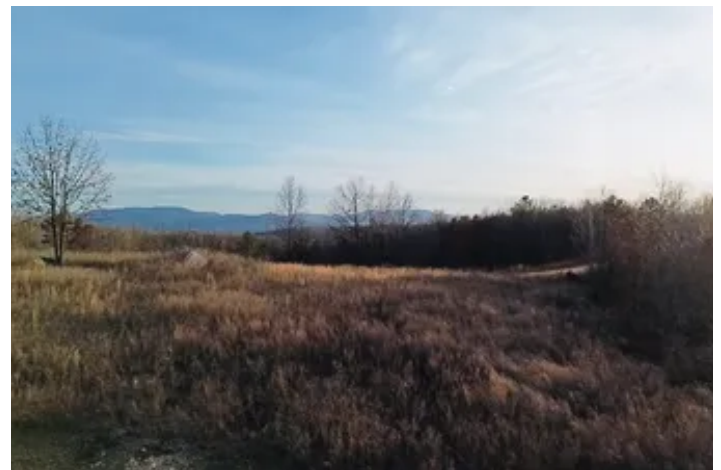
Nestled in the heart of Searcy County, Arkansas, this 52-acre tract offers the perfect blend of privacy, natural beauty, and outdoor adventure. With county road frontage, this secluded property is an ideal location for those seeking a peaceful retreat or a place to build your dream home.

The land is partially fenced, offering plenty of space for livestock or horses. Enjoy the expansive views of the rolling hills and valleys, with sunrise views that are nothing short of breathtaking. The property is abundant in mature timber, creating a serene atmosphere and offering excellent hunting opportunities, including a prime whitetail habitat.

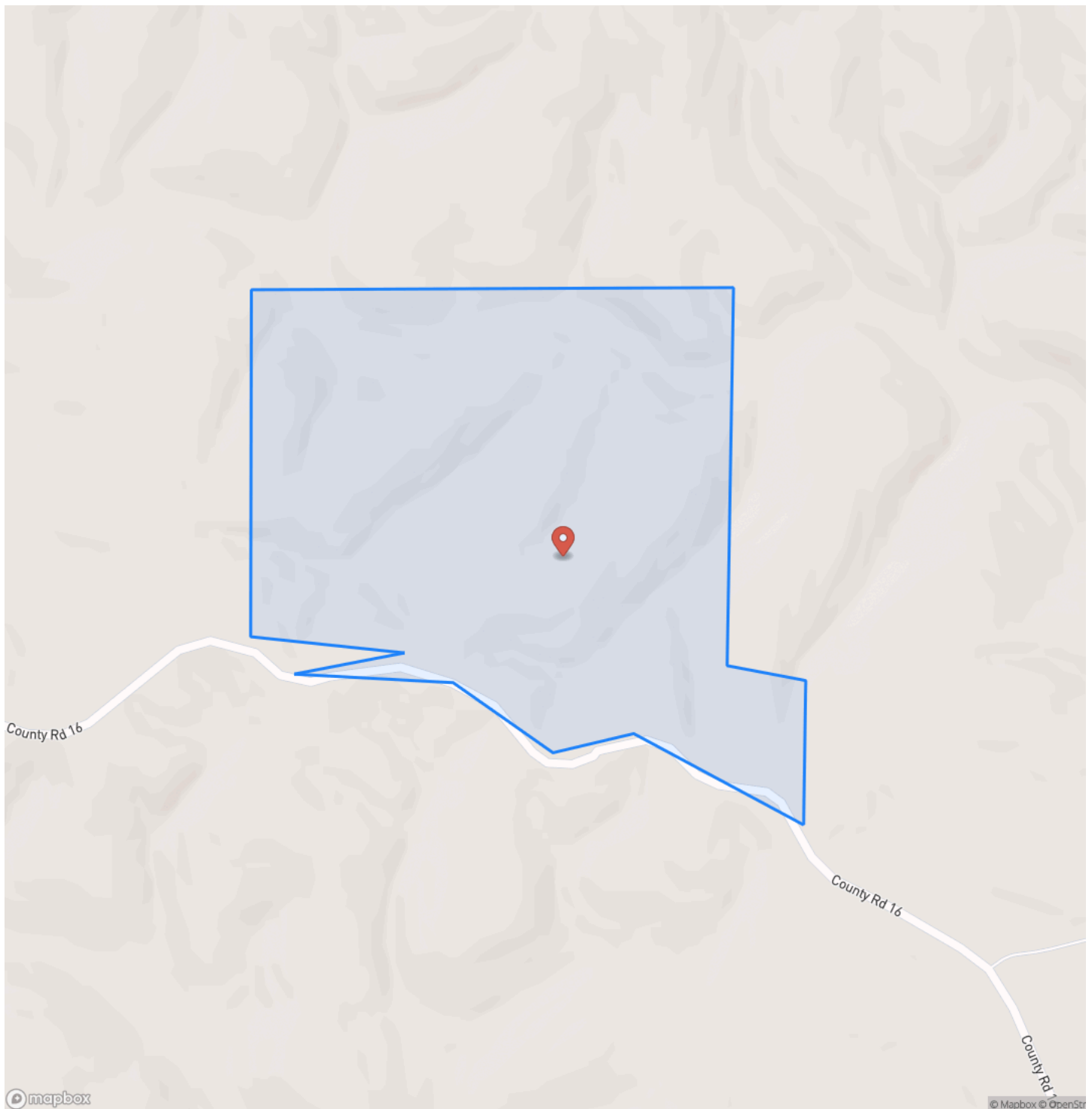
For outdoor enthusiasts, this property has it all—ATV and vehicle trails wind through the land, providing access to explore every corner. Additionally, the location is minutes from the iconic Buffalo National River, offering endless possibilities for water activities such as canoeing, kayaking, and fishing.

The land also features food plots and diverse wildlife, making it an ideal setting for hunting. Whether you're an avid hunter or just looking for a place to relax and enjoy nature, this tract has everything you need. Utilities are not far away, making this a practical yet idyllic location to build your homestead or retreat.

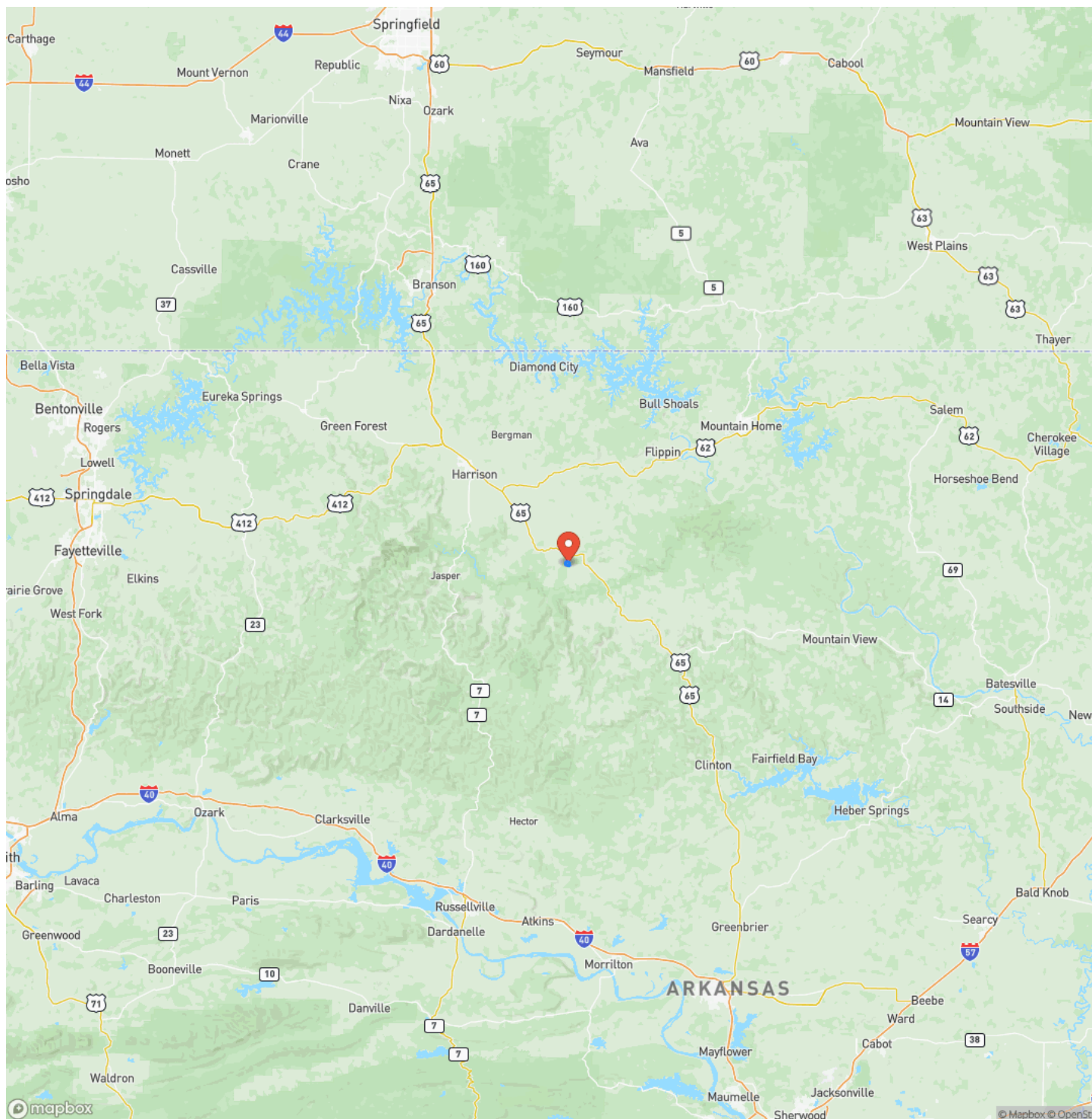
With a combination of privacy, recreational opportunities, and stunning natural beauty, this 52-acre property is a true paradise for anyone who loves the outdoors. Don't miss your chance to own this remarkable piece of Arkansas



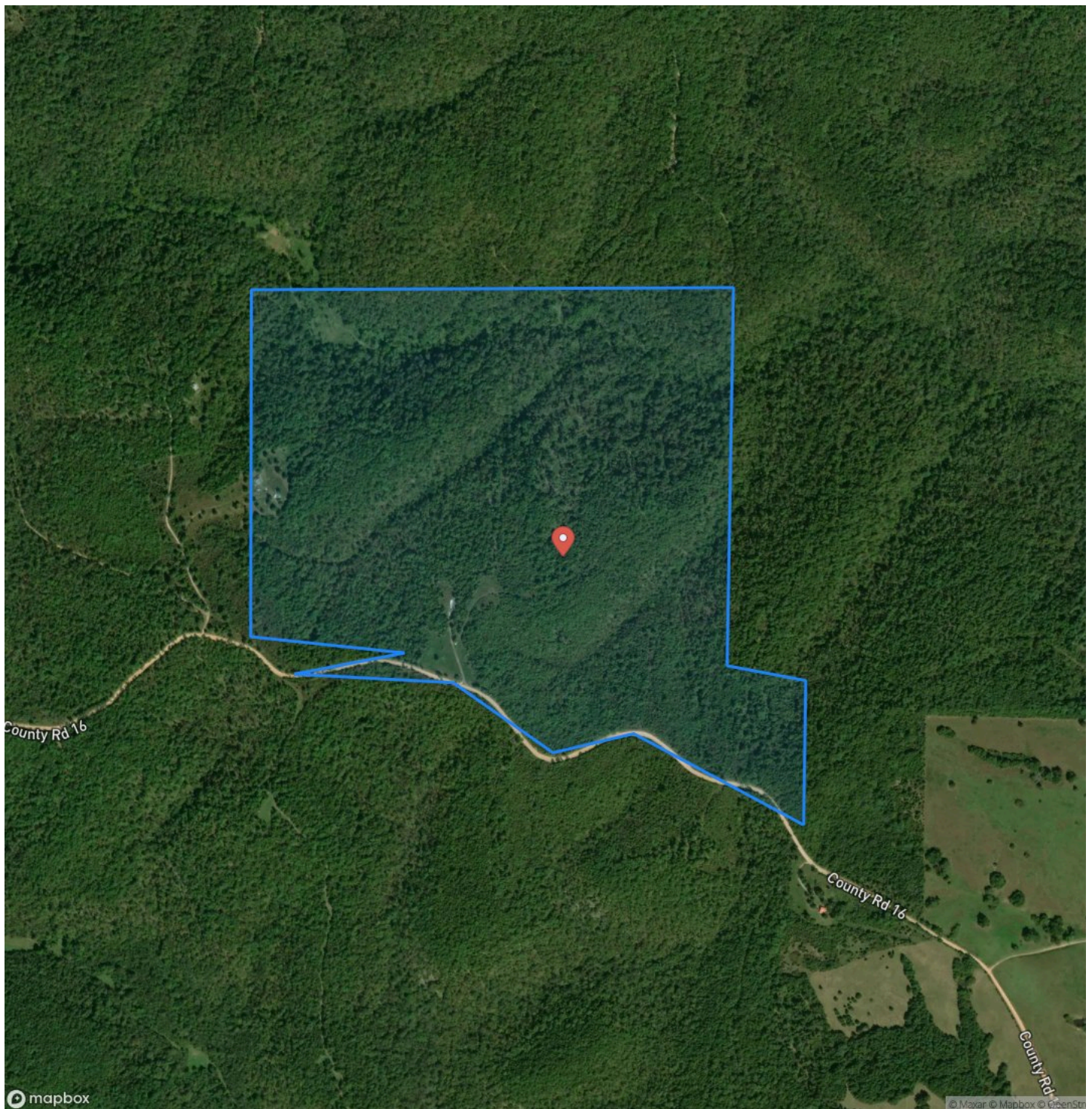
Locator Map



Locator Map



Satellite Map



50 acre Glade
Saint Joe, AR / Searcy County

LISTING REPRESENTATIVE

For more information contact:



Representative

Matt Heft

Mobile

(870) 688-8614

Office

(870) 807-6731

Email

matth@mossyoakproperties.com

Address

6761 HWY 5

City / State / Zip

NOTES



MORE INFO ONLINE:

MossyOakProperties.com

This image shows a full page of blank white paper with horizontal ruling lines. The lines are evenly spaced and run across the width of the page, providing a template for writing or drawing. There are no margins, text, or other markings present.



MORE INFO ONLINE:
MossyOakProperties.com

DISCLAIMERS

Neither the seller, Mossy Oak Properties Land & Home (MOPLH), their subsidiaries, affiliates nor representatives warrant the accuracy, adequacy or completeness of any information contained herein regarding the property, its condition, boundaries, access, acreage, or timber stand information. Maps, timber evaluations and all information contained herein is provided "AS IS," as a courtesy to potential buyers. Potential buyers should make their own determination regarding the accuracy of the information provided. Potential buyer's agent(s) must be identified on first contact with MOPLH and must accompany the potential buyer on showings. Selling brokerages must have an executed Buyer agency agreement prior to contact with listing agent/brokerage, which spells out specifically selling brokerage commission source. Co-brokerage agreements between listing and selling brokerage are required to verify any commission split. Otherwise, the fee participation will be at the sole discretion of MOPLH. All property is subject to change, withdrawal, or prior sale. MOPLH expressly disclaims liability for errors or omissions and does not assume liability for typographical errors, misprints, nor for misinformation that may have been given to us.

Any person viewing this marketing material is considered a prospective buyer for the subject property. Should a prospective buyer or its agents choose to inspect the property, they do so at their own risk and assume all liability and shall indemnify Seller and its agents against any and all claims, demands or causes of action, of every kind, nature and description relating to its access to or presence on the property.

Mossy Oak Properties Land and Home
819 Lakewood Road
Camden, AR 71701
(870) 807-6731
MossyOakProperties.com

