

Private 21 Acre Ranchette in Sidney, MT
12386 County Road 342a
Sidney, MT 59270

\$649,000
21.650± Acres
Richland County



**Private 21 Acre Ranchette in Sidney, MT
Sidney, MT / Richland County**

SUMMARY

Address

12386 County Road 342a

City, State Zip

Sidney, MT 59270

County

Richland County

Type

Residential Property

Latitude / Longitude

47.701649 / -104.336886

Taxes (Annually)

2124

Dwelling Square Feet

3136

Bedrooms / Bathrooms

4 / 3.5

Acreage

21.650

Price

\$649,000

Property Website

<https://greatplainslandcompany.com/detail/private-21-acre-ranchette-in-sidney-mt-richland-montana/86305/>



Private 21 Acre Ranchette in Sidney, MT Sidney, MT / Richland County

PROPERTY DESCRIPTION

Enjoy quiet country living on this raised ranch home sprawling across 21.65 pristine acres just outside Sidney off HWY 200. This meticulously remodeled 4BD, 3.5BA home features premium upgrades—quartz counters, farmhouse sink, tile floors, barn doors, cozy pellet stove, and carpeted basement. A dedicated home office completes your work-from-home setup.

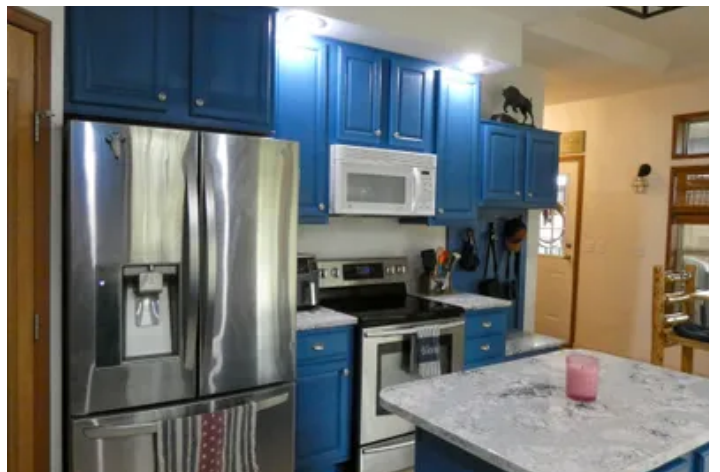
Perfect for agricultural pursuits with a property that includes: multiple sheds, automatic waterers, grain storage bin, chicken coop, corral with fencing, and a heated dog run for your four-legged family.

True seclusion as the land borders 640 landlocked acres of state land. Breathtaking sunrises from your Sunspace enclosed porch while abundant wildlife frequents your yard—majestic mule deer, vibrant Ringneck pheasants, elusive Hungarian partridges, Sharptail grouse, and playful cottontail rabbits make every day a nature experience.

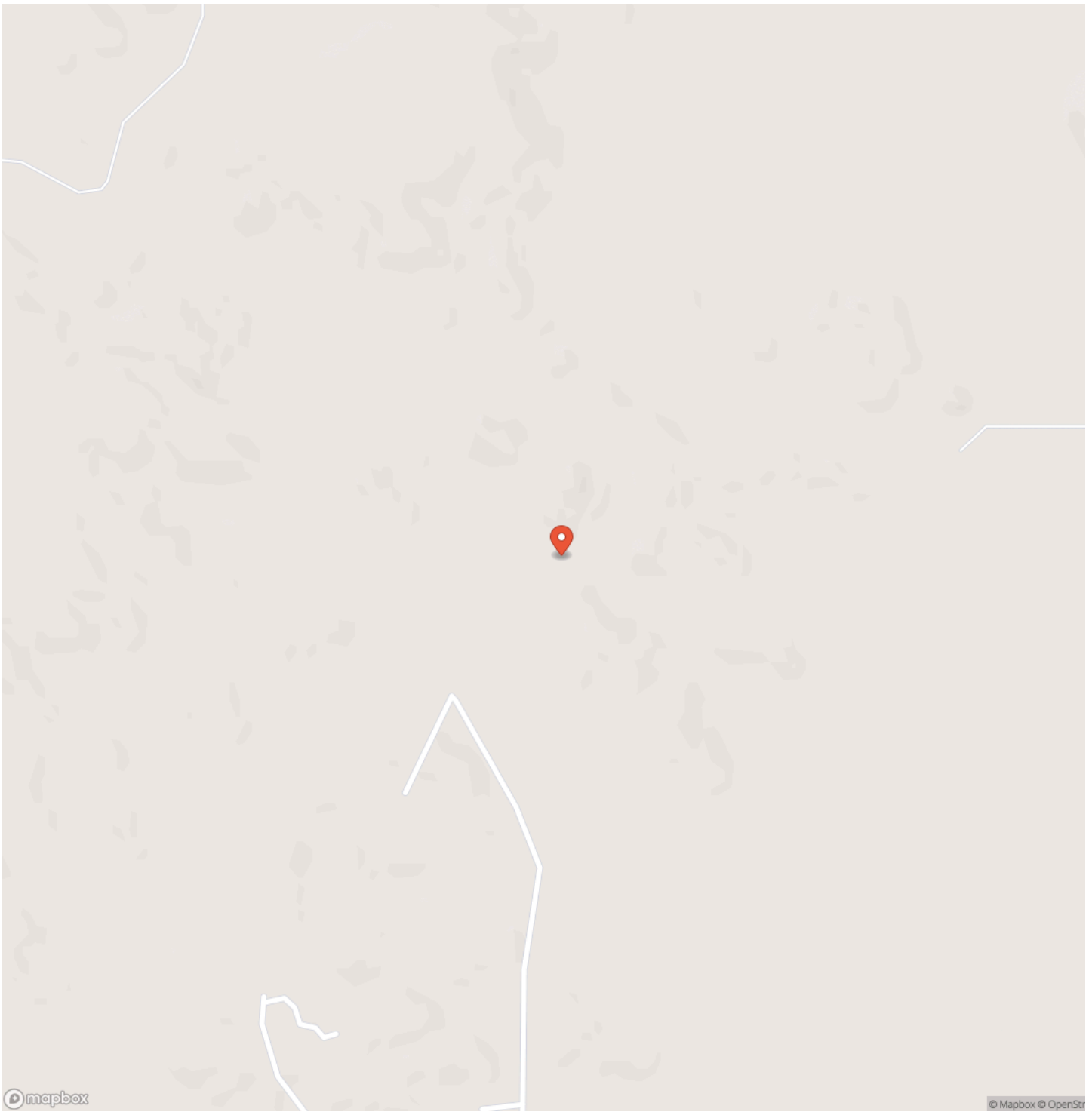
DRWA water scheduled to be completed by December 2026.



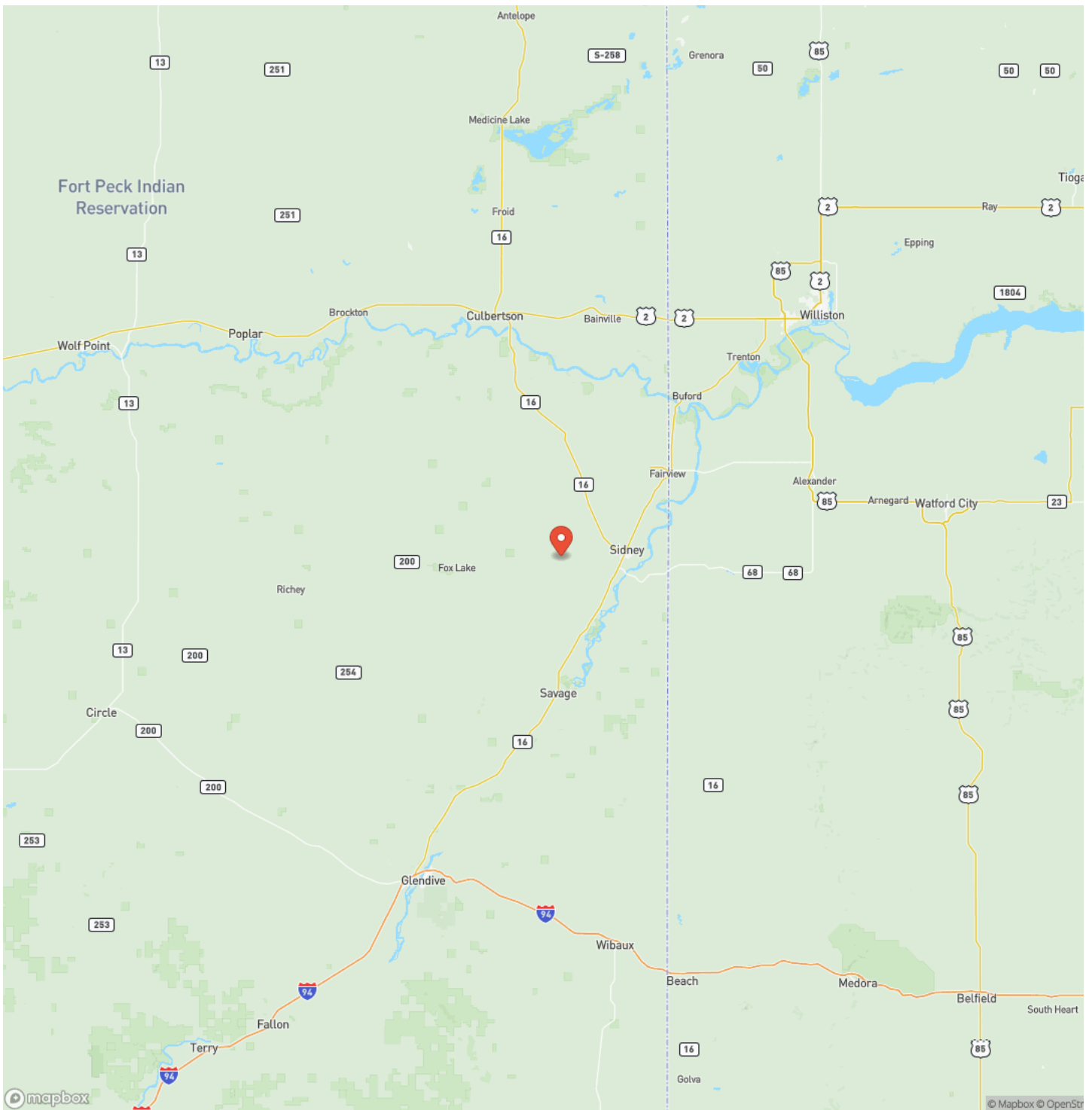
Private 21 Acre Ranchette in Sidney, MT
Sidney, MT / Richland County



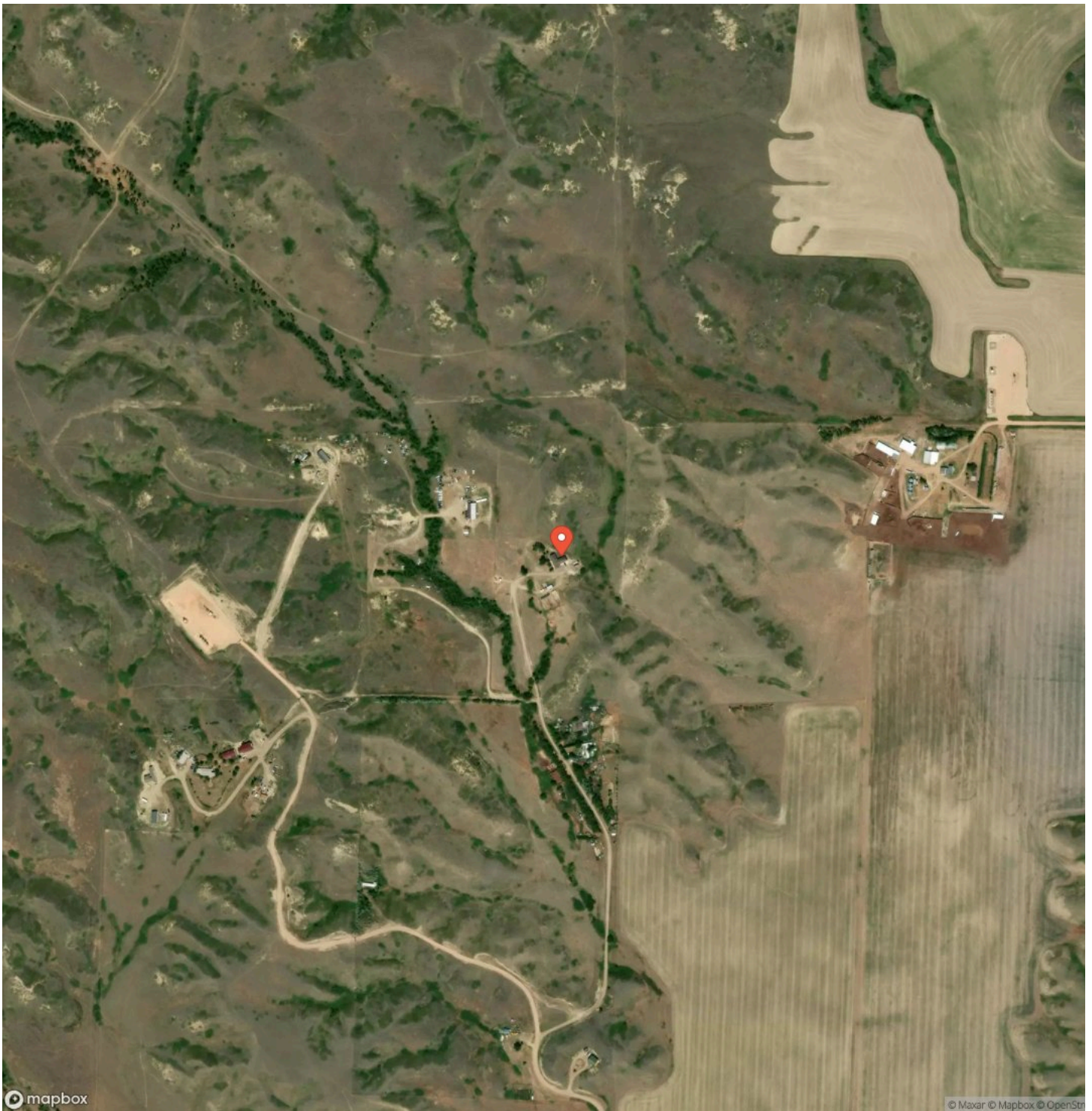
Locator Map



Locator Map



Satellite Map



DISCLAIMERS

Owners are licensed real estate agents.



Great Plains Land Company
501 N. Walker St.
Oklahoma City, OK 73102
(405) 255-0051
greatplainslandcompany.com

