

**Edmunds County, 160 Acres**  
340 Ave/144th str  
Onaka, SD 57466

**\$920,000**  
160± Acres  
Edmunds County





**Edmunds County, 160 Acres**  
**Onaka, SD / Edmunds County**

---

**SUMMARY**

**Address**

340 Ave/144th str

**City, State Zip**

Onaka, SD 57466

**County**

Edmunds County

**Type**

Farms, Hunting Land

**Latitude / Longitude**

45.441254 / -99.379929

**Taxes (Annually)**

1933

**Acreage**

160

**Price**

\$920,000

**Property Website**

<https://talltinesproperties.com/property/edmunds-county-160-acres-edmunds-south-dakota/95393/>



## **PROPERTY DESCRIPTION**

This productive 160± acre tract is in Edmunds County, South Dakota, an area well known for both strong agricultural production and outstanding wildlife habitat. The property consists of nearly all tillable acres and is currently utilized for row crop farming, with corn, soybeans, and wheat being the primary crops grown. The land has been well cared for and farmed using sound management practices, resulting in dependable yields, efficient use of inputs, and long-term soil productivity. The acreage is well suited for continued row crop production and offers the flexibility to adapt to changing market conditions or crop rotations.

The farm carries a high county-average CPI rating of 72.97, reflecting the overall quality, consistency, and productivity of the soils. These soil types are well suited for sustained row crop production and can produce competitive yields across a wide range of growing seasons. The topography is mostly level to gently rolling, allowing for efficient field operations with modern equipment, reduced erosion risk, and straightforward farm management. Field boundaries are practical and easy to work, contributing to lower operational costs and improved efficiency for today's farming practices.

In addition to its strong agricultural value, Edmunds County is widely recognized for exceptional wildlife and hunting opportunities. The region is known for healthy populations of ducks, pheasants, and whitetail deer, making this area attractive to both sportsmen and outdoor enthusiasts. Nearby water sources, shelter belts, drainage areas, and surrounding cropland help create ideal habitat conditions throughout the year. This combination of productive farmland and recreational appeal enhances the overall value of the property.

Whether you are an owner-operator looking to expand an existing farming operation, an investor seeking high-quality South Dakota cropland, or a buyer interested in blending farm income with recreational use, this 160-acre parcel offers a well-rounded opportunity. With its strong CPI rating, excellent location, and added wildlife benefits, this property represents a desirable investment in one of north-central South Dakota's most respected agricultural and hunting regions.

## **Property Features**

- 160 Acres +-
- 72.97 CPI
- Available 2026
- Hunting potential for duck, pheasant, and deer.

## **Area Information**

[South Dakota](#)

[Edmunds county](#)

[Roscoe, SD](#)

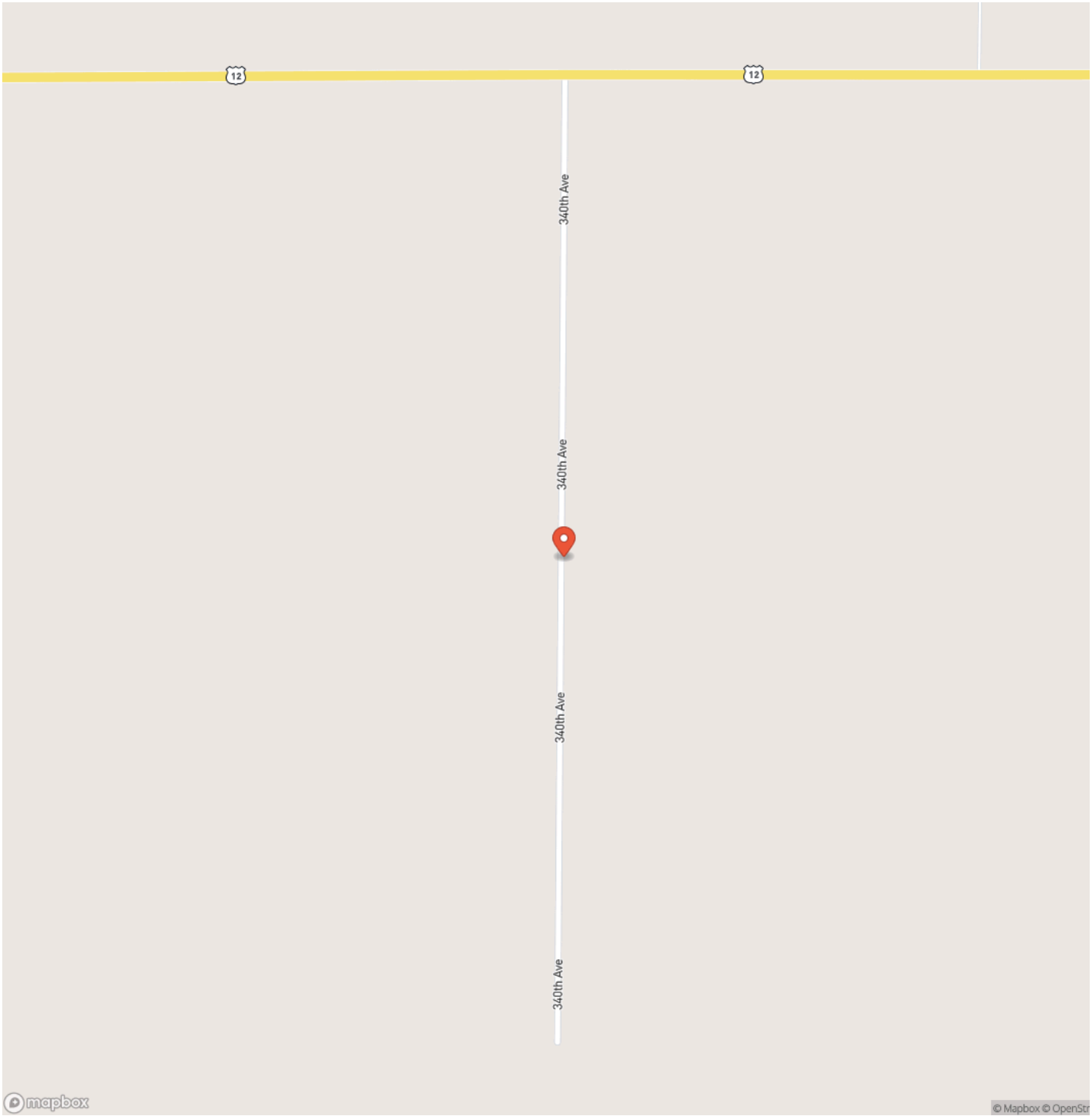
[SDGFP](#)



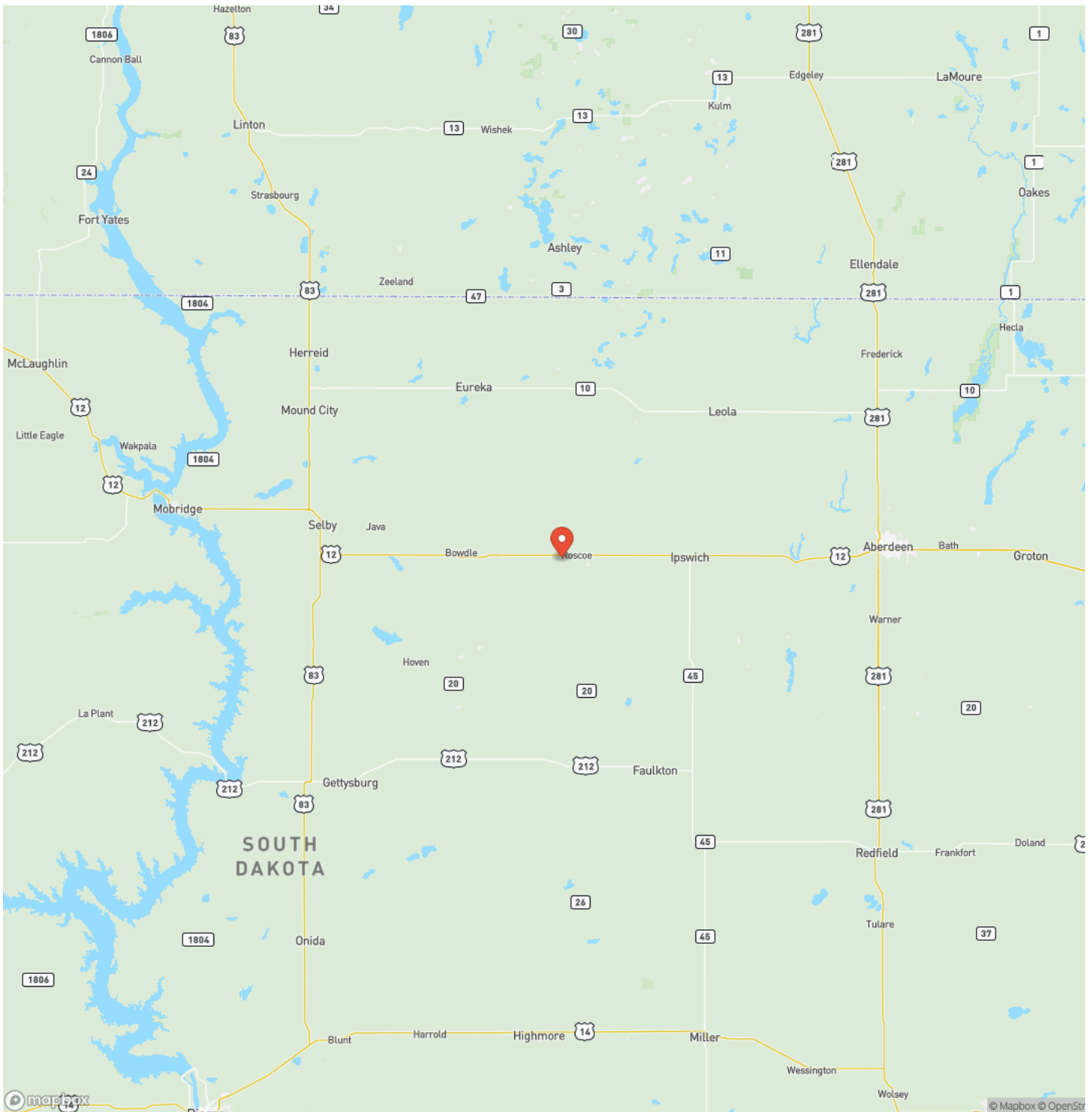




# Locator Map

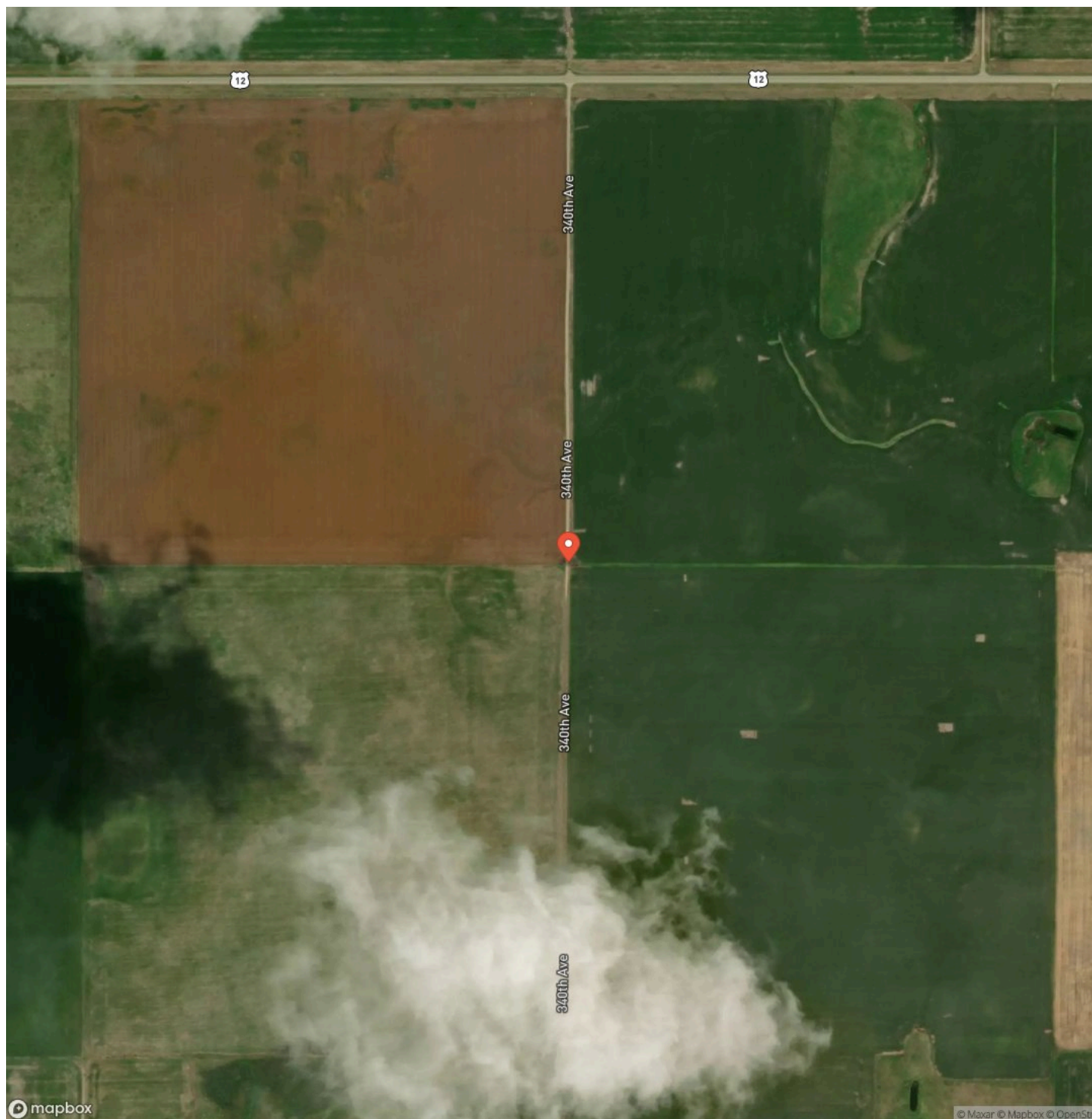


## Locator Map





## Satellite Map



### LISTING REPRESENTATIVE

**For more information contact:**



### Representative

Jon Bisbee

## Mobile

(605) 216-1116

## Email

jon.bisbee@talltinesproperties.com

## Address

36640 155th Street

## City / State / Zip

## NOTES





[illegible]

**<https://talitinesproperties.com/>**

## **DISCLAIMERS**

When buying a property listed by Tall Tines Trophy Properties, the broker who represents the buyer must be identified at the first point of contact and must be present at all showings unless prior arrangements have been made with Tall Tines Trophy Properties to qualify for compensation. If these requirements are not followed, the selling broker may lose any compensation, as decided solely by Tall Tines Trophy Properties.



---

**Tall Tines Trophy Properties**  
PO Box 23  
Presho, SD 57568  
(605) 840-9578  
<https://talltinesproperties.com/>

---

