

EDD SMOTHERMAN
PROPERTY

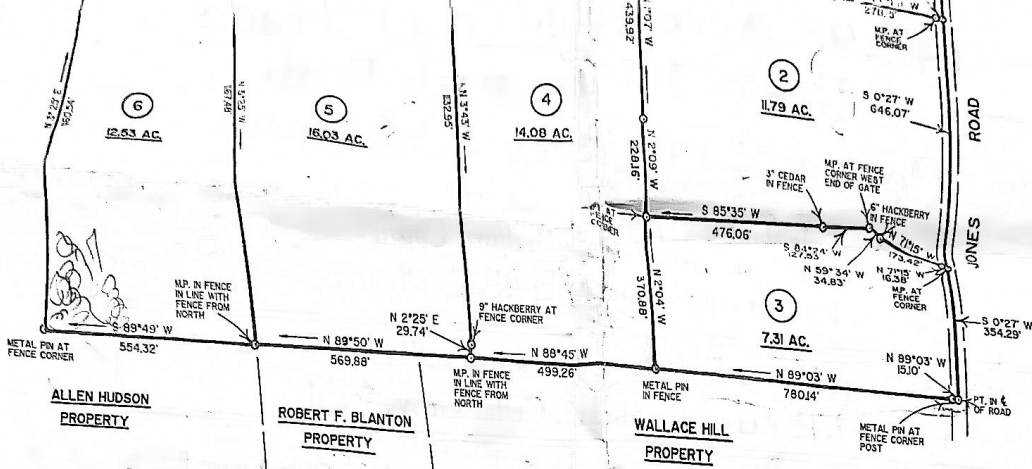
ANNIE M.
DISHMAN
PROPERTY

LADYS C. CARNEY
PROPERTY

FOR TITLE SOURCE SEE
D.B. 42; PG. 20, D.B. 43; PG. 235,
D.B. 45; PG. 260, D.B. 46; PG. 124,
AND D.B. 62; PG. 507
10TH CIVIL DISTRICT
BEDFORD COUNTY TN.

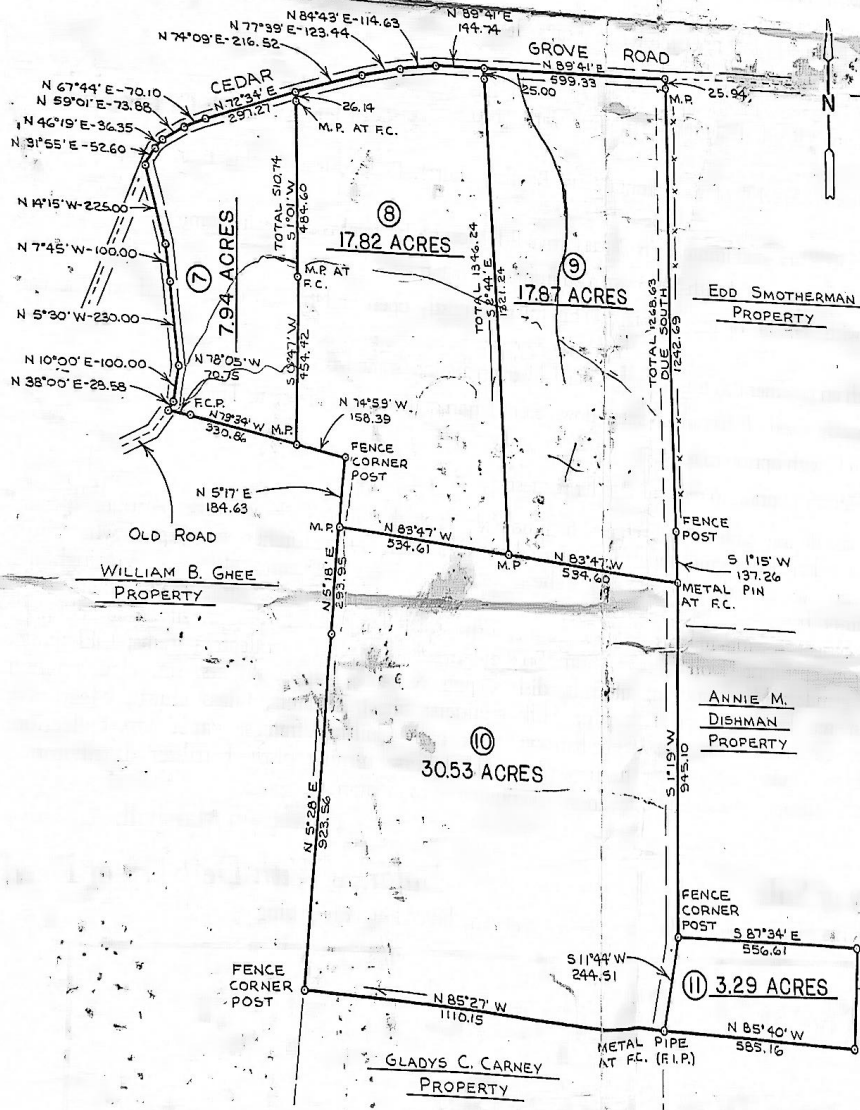
SCALE 1" = 200'
DATE 6-21-89

Chapel Hill Rd



00216
 58091
 0008411081
 b
 SURVEY FOR:
THE MYRTLE BLANTON ESTATE

00091
 63121



SURVEY FOR
THE MYRTLE BLANTON ESTATE

FOR TITLE SOURCE SEE
 D.B. 42; Pg. 20, D.B. 43; Pg. 235,
 D.B. 45; Pg. 260, D.B. 46; Pg. 124,
 AND D.B. 62; Pg. 507
 10TH CIVIL DISTRICT
 BEDFORD COUNTY TN.

SCALE 1" = 200'
 DATE 6-21-89

Chappel Hill Rd