

"Eagles Nest" Log Cabin - Beautiful 6,557 Log Home For Sale - Rochester, Indiana - Fulton County
4108 N 100 W
Rochester, IN 46975

\$1,200,000
6.080± Acres
Fulton County



"Eagles Nest" Log Cabin - Beautiful 6,557 Log Home For Sale - Rochester, Indiana - Fulton County
Rochester, IN / Fulton County

SUMMARY

Address

4108 N 100 W

City, State Zip

Rochester, IN 46975

County

Fulton County

Type

Hunting Land, Recreational Land, Residential Property, Single Family

Latitude / Longitude

41.114233 / -86.263061

Dwelling Square Feet

6557

Bedrooms / Bathrooms

4 / 4.5

Acreage

6.080

Price

\$1,200,000

Property Website

<https://indianalandandlifestyle.com/property/eagles-nest-log-cabin-beautiful-6-557-log-home-for-sale-rochester-indiana-fulton-county-fulton-indiana/70610/>



"Eagles Nest" Log Cabin - Beautiful 6,557 Log Home For Sale - Rochester, Indiana - Fulton County Rochester, IN / Fulton County

PROPERTY DESCRIPTION

Exquisite Log Cabin Retreat - "The Eagle's Nest"

Experience unparalleled craftsmanship and rustic elegance in this stunning 6,557 sq. ft. (5,995 sq. ft. finished) log cabin, nestled in a serene and picturesque setting. Boasting 4 bedrooms, 4.5 baths, and an array of premium features, this home was built with no shortcuts and all the extras. Whether you're seeking a luxurious primary residence, a vacation retreat, or an investment property, this one-of-a-kind cabin delivers.

Interior Highlights

Main Level:

- **Gourmet Kitchen:** Custom oak cabinets with intricate leaf cutout details, complemented by lifetime Corian countertops and walnut hardwood floors. Features include a large island, a huge custom pantry cabinet, turntable corner cabinets, and gas/electric stove hookups.
- **Living & Dining:** The open-concept layout is perfect for entertaining, with a dining area and a 4-season room featuring a custom-stamped floor and panoramic pond views. The living area showcases a striking floor-to-ceiling fireplace built with locally sourced stone, flanked by east-facing windows that capture breathtaking sunrises.
- **Master Suite:** Spacious and serene, with a cedar accent wall, patio access, a walk-in closet, and a spa-like en-suite bathroom featuring a cherry vanity with marble countertops, a walk-in shower, and a soaking tub.
- **Exercise Room:** Designed for ultimate relaxation, this space includes a hot tub, sauna, and tanning bed, with large windows offering tranquil sunset views over the pond.
- **Main Floor Utility Room**
- **Den/Office:** Sliding door to the outside.
- **3 Car attached Garage**
- **New Windows and sliding doors in all living areas.**

Upper Level:

- A cozy loft with a common area and two bedrooms, each with its own en-suite bathroom and ample closet space.

Lower Level:

- The expansive basement is an entertainer's dream, complete with a second kitchen, bar, living area, and an Olympic-size pool table. Additional features include a 1960s/1970s-themed full bathroom, a bedroom, utility room, and two storage rooms.

Property Features

- **Exterior:** A covered patio with custom wood-stamped concrete, perfect for outdoor gatherings. 7-8 year old roof. Gutter guards on all gutters.
- **Utilities:** Wood boiler heating with LP gas backup, on-demand Kinetico water softener, 50 gallon LP gas, two furnaces, and central air. Underground electrical and RTC internet ensure modern convenience.
- **Recreation:** A 12-foot deep, spring-fed pond ideal for fishing, complete with poles for a volleyball net. Wildlife enthusiasts will appreciate frequent deer and turkey sightings.

This property offers endless possibilities—ideal as a primary residence, vacation home, Airbnb, hunting lodge, or event venue. Don't miss the opportunity to own this truly remarkable retreat, where every detail has been thoughtfully crafted to provide comfort, style, and functionality.

For an opportunity to view this one of a kind custom log home, contact Land and Home Specialist, Ty Mills, at [260-571-5232](tel:260-571-5232) / tmills@mossyoakproperties.com

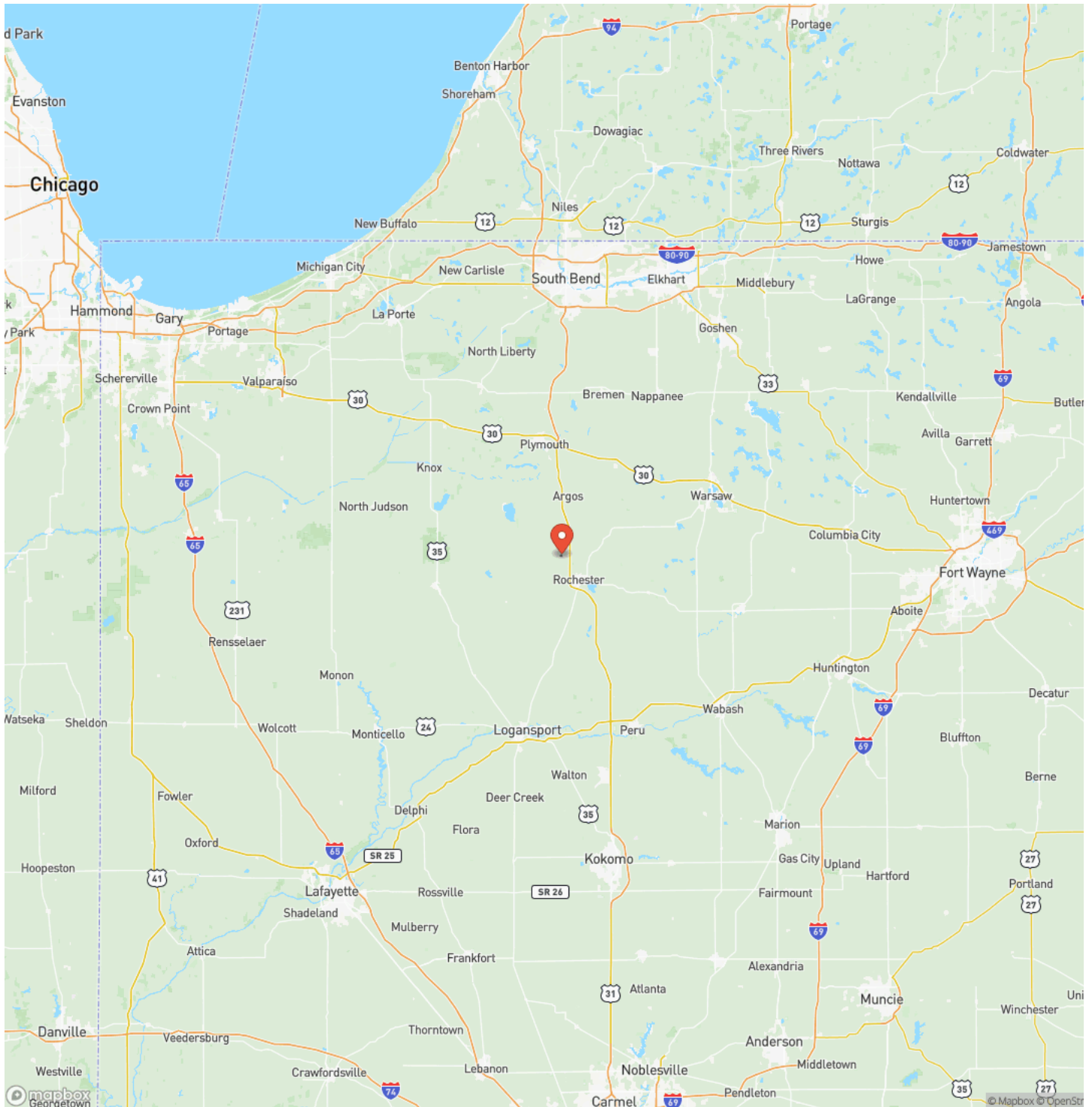
"Eagles Nest" Log Cabin - Beautiful 6,557 Log Home For Sale - Rochester, Indiana - Fulton County
Rochester, IN / Fulton County



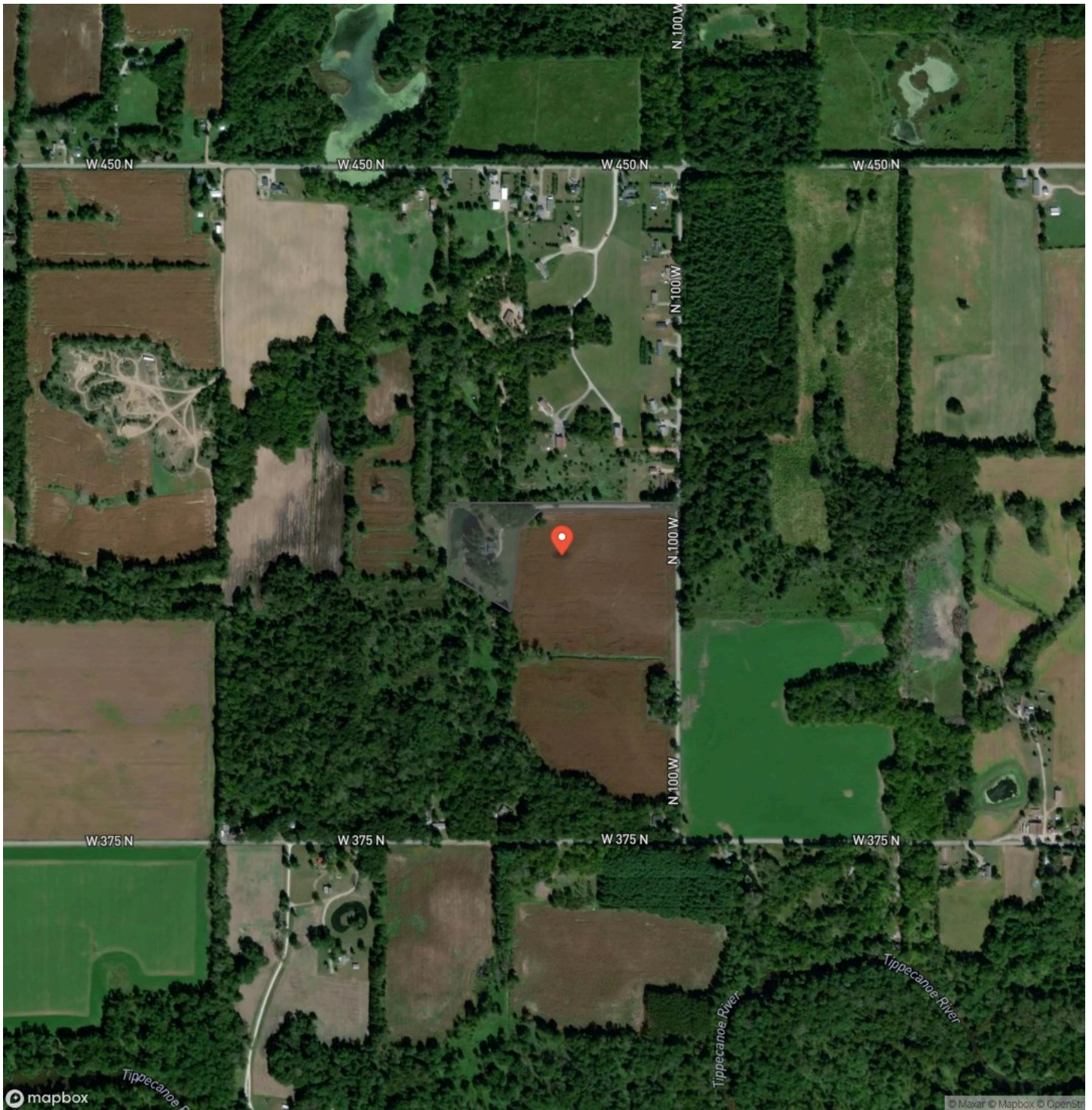
Locator Map



Locator Map



Satellite Map



**"Eagles Nest" Log Cabin - Beautiful 6,557 Log Home For Sale - Rochester, Indiana - Fulton County
Rochester, IN / Fulton County**

LISTING REPRESENTATIVE

For more information contact:



Representative

Ty Mills

Mobile

(260) 571-5232

Office

(765) 505-4155

Email

tmills@mossyoakproperties.com

Address

2013 E Lou Ln

City / State / Zip

NOTES

This image shows a blank sheet of white paper with horizontal ruling lines. The lines are evenly spaced and run across the width of the page. There are no margins, text, or other markings on the paper.

This image shows a single sheet of white paper with horizontal ruling lines. The lines are evenly spaced and run across the width of the page. There are no margins, text, or other markings on the paper.

DISCLAIMERS

Information in this brochure is provided solely for information purposes and does not constitute an offer to sell or advertise real estate outside the states in which broker or agent licensed. The information presented has been obtained from sources deemed to be reliable, but is not guaranteed or warranted by the agent, broker, or the sellers of these properties. This offering is subject to errors, omissions, prior sale, price change, correction or withdrawal from the market without notice. All references to age, square footage, income, expenses, acreage, carrying capacity, and land classification, etc. are approximate. Prospective buyers are chargeable with and expected to conduct their own independent investigation of the information and the property and to rely only on those results. Sellers reserve the right to accept or reject any and all offers without liability to any buyer or cooperating broker.

Maps are provided for illustration purposes only, the accuracy is not warranted. Parcels on interactive maps are not adjusted to match aerial backgrounds. This information is for reference purposes only and is not a legal document. Data maps contain errors. The seller and seller's agent are making known to all potential buyers that there may be variations between the location of the existing fence lines and the legal description of the deeded property. Seller and seller's agent make no warranties with regard to the location of the fence lines in relationship to the deeded property lines, nor does the Seller make any warranties or representations with regard to the specific acreage contained within the fenced property lines. Seller is selling the property in an "as is" condition, which includes the location of the fences as they exist. Boundaries shown on the accompanying maps are approximate, based on county parcel data. The maps are not to scale. The accuracy of the maps is not guaranteed. Prospective buyers are encouraged to verify fence lines, deeded property lines and acreages using a licensed surveyor at their own expense.

Mossy Oak Properties Indiana Land and Lifestyle

PO Box 10

Clinton, IN 47842

(765) 505-4155

<https://indianalandandlifestyle.com/>
