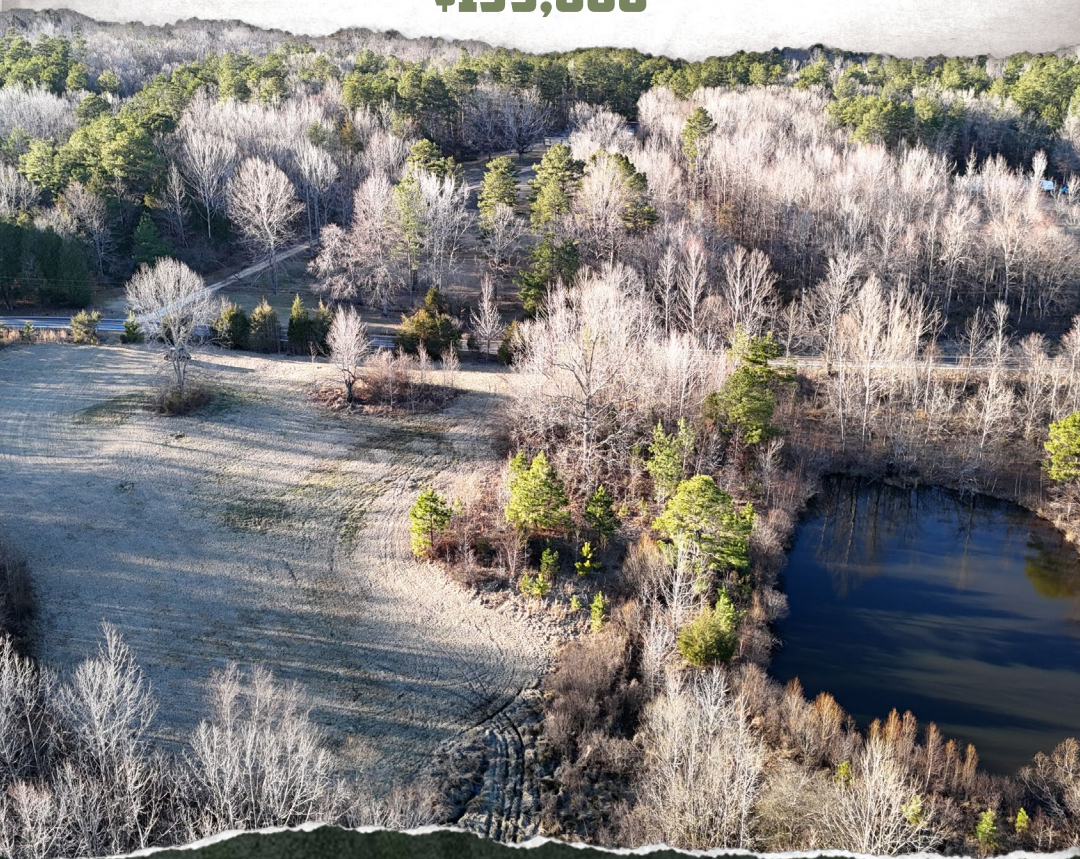




SMALLTOWN
HUNTING PROPERTIES
& REAL ESTATESM

31.43± ACRES
HARDEMAN COUNTY, TN
\$199,000



OFFICE (662) 238-4077 | WWW.SMALLTOWNPROPERTIES.COM

THE HARDEMAN 31.43

PROPERTY PROFILE

LOCATION:

- Highway 125
Toone, TN 38381
- Hardeman County
- 7.31± Miles NE of Bolivar
- 41± Miles from Blue Oval City

COORDINATES:

- 35.2862061, -88.8923077

PROPERTY USE:

- Farmland
- Recreational
- Home/Cabin Site
- Investment

PROPERTY INFORMATION:

- 31.43± Surveyed Acres
- Paved Road Frontage
- Hayfields
- Mature Timber
- Stocked Pond
- Frontage on Piney Creek
- Electricity at the Road
- Home/Cabin Sites
- Owner/Agent
- Additional Acreage Available

TAX INFORMATION:

- Parcel# 058-012.02
- 2024 – \$152



SMALLTOWN
HUNTING PROPERTIES
& REAL ESTATESM

ANNAH BARNES

LAND & RESIDENTIAL SPECIALIST

C: 662-316-3971

O: 662-238-4077

annah@smalltownproperties.com

50 CR 401 - Oxford, MS 38655

smalltownproperties.com

Information is believed to be accurate but not guaranteed.

WELCOME TO THE HARDEMAN 31.43

DISCOVER THE PERFECT BLEND OF OPEN SPACE AND NATURAL BEAUTY ON THE HARDEMAN 31.43. Featuring a mix of rolling hayfields and mature woodlands, this 31.43± surveyed acre tract offers multiple picturesque building sites that overlook a stunning stocked pond. The Hardeman County, TN tract makes the perfect setting for your dream home! Enjoy the tranquility of nature with a balance of open space and wooded privacy. Ideal for a private retreat, homestead, or recreational use, this unrestricted property comes with no HOA or covenants. Electricity is available at the paved road. Conveniently located just eight minutes from Toone and only two minutes from Blue Oval, take advantage of the opportunity to own a serene slice of Tennessee countryside.

Call Annah Barnes today to schedule a tour.

Additional acreage is available. Owner/Agent.



SMALLTOWN
HUNTING PROPERTIES
& REAL ESTATESM

ANNAH BARNES

LAND & RESIDENTIAL SPECIALIST

C: 662-316-3971

O: 662-238-4077

annah@smalltownproperties.com

50 CR 401 - Oxford, MS 38655

smalltownproperties.com

Information is believed to be accurate but not guaranteed.

31.43± ACRES

HARDEMAN COUNTY, TENNESSEE



SMALLTOWN
HUNTING PROPERTIES
& REAL ESTATESM

ANNAH BARNES

LAND & RESIDENTIAL SPECIALIST

C: 662-316-3971

O: 662-238-4077

annah@smalltownproperties.com

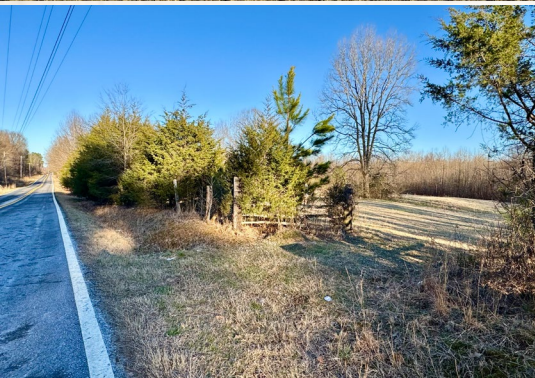
50 CR 401 - Oxford, MS 38655

smalltownproperties.com

Information is believed to be accurate but not guaranteed.

31.43± ACRES

HARDEMAN COUNTY, TENNESSEE



SMALLTOWN
HUNTING PROPERTIES
& REAL ESTATESM

ANNAH BARNES

LAND & RESIDENTIAL SPECIALIST

C: 662-316-3971

O: 662-238-4077

annah@smalltownproperties.com

50 CR 401 - Oxford, MS 38655

smalltownproperties.com

Information is believed to be accurate but not guaranteed.

31.43± ACRES

HARDEMAN COUNTY, TENNESSEE



SMALLTOWN
HUNTING PROPERTIES
& REAL ESTATESM

ANNAH BARNES

LAND & RESIDENTIAL SPECIALIST

C: 662-316-3971

O: 662-238-4077

annah@smalltownproperties.com

50 CR 401 - Oxford, MS 38655

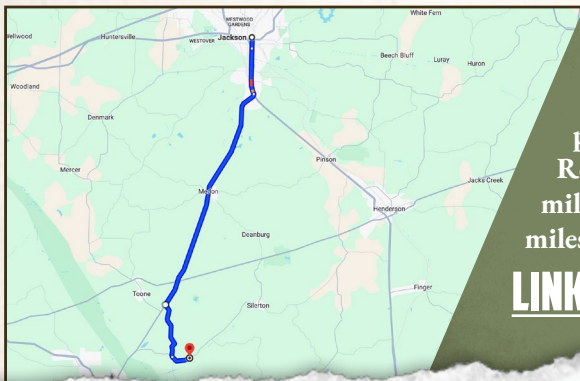
smalltownproperties.com

Information is believed to be accurate but not guaranteed.

31.43± ACRES

HARDEMAN COUNTY, TENNESSEE

land id. LINK



Directions From US-45 S in Jackson, TN: Turn right onto TN-18 S and proceed 16.5 miles. Turn left on Brown Road/Ebenezer Road and continue 4.1 miles. Turn left on TN-125 N and in 1.4 miles, the property will be on your right.

[LINK TO GOOGLE MAP DIRECTIONS](#)



SMALLTOWN
HUNTING PROPERTIES
& REAL ESTATESM

ANNAH BARNES

LAND & RESIDENTIAL SPECIALIST

C: 662-316-3971

O: 662-238-4077

annah@smalltownproperties.com

50 CR 401 - Oxford, MS 38655

smalltownproperties.com

Information is believed to be accurate but not guaranteed.