

822 DEERFIELD DRIVE
OXFORD, MS | LAFAYETTE COUNTY
\$299,500



SMALLTOWN
HUNTING PROPERTIES
& REAL ESTATE™

OFFICE (662) 238-4077 | WWW.SMALLTOWNPROPERTIES.COM

822 DEERFIELD DRIVE

PROPERTY PROFILE

LOCATION:

- 822 Deerfield Drive
Oxford, MS 38655
- Deerfield Neighborhood
- Lafayette County
- 4.3± Miles NW of
the Square in Oxford

COORDINATES:

- 34.4007, -89.5623

PROPERTY USE:

- Residential
- Investment

PROPERTY INFORMATION:

- 0.16± Acre Lot
- 1,450± SqFt Home
- 3 Bedrooms/2 Bathrooms
- Open Floor Plan
- Large Living Room
- Vaulted Ceiling
- Primary Suite with Walk-In Closet
- Two-Car Garage
- Lafayette County School District
- Sold As Is

TAX INFORMATION:

- Parcel # 133Y-07-251.00
- 2024: \$1,985.58



SMALLTOWN
HUNTING PROPERTIES
& REAL ESTATESM

LUKE GOSSETT

LAND SPECIALIST

C: 662-832-8822

O: 662-238-4077

lgossett@smalltownproperties.com

50 CR 401 - Oxford, MS 38655

smalltownproperties.com

Information is believed to be accurate but not guaranteed.

WELCOME TO 822 DEERFIELD DRIVE

WELCOME HOME TO 822 DEERFIELD DRIVE! Located just over four miles from the heart of the rapidly growing Oxford, MS, this well-maintained home offers comfort, space, and convenience.

The home is situated in the desirable Deerfield neighborhood. From a shared driveway at the end of a low-traffic cul-de-sac is a 1,450± square foot home offering three bedrooms and two baths. This home is perfect for small families, first-time buyers, investors, or anyone seeking a quiet retreat close to town. Step inside to an open floor plan featuring a spacious living room with vaulted ceilings that create an airy, inviting atmosphere. The kitchen flows seamlessly into the living and dining areas—perfect for everyday living and entertaining. The primary suite offers a private escape with a walk-in closet and en-suite bathroom. Enjoy a two-car garage, a nice yard for outdoor activities, and the convenience of a friendly, established neighborhood just minutes from shopping, dining, and entertainment in Oxford.

Call Luke Gossett today to schedule a showing!

DISCLAIMER: The property is being sold as is.



SMALLTOWN
HUNTING PROPERTIES
& REAL ESTATESM

LUKE GOSSETT

LAND SPECIALIST

C: 662-832-8822

O: 662-238-4077

lgossett@smalltownproperties.com

50 CR 401 - Oxford, MS 38655

smalltownproperties.com

Information is believed to be accurate but not guaranteed.



SMALLTOWN
HUNTING PROPERTIES
& REAL ESTATESM

LUKE GOSSETT

LAND SPECIALIST

C: 662-832-8822

O: 662-238-4077

lgossett@smalltownproperties.com

50 CR 401 - Oxford, MS 38655

smalltownproperties.com

Information is believed to be accurate but not guaranteed.



SMALLTOWN
HUNTING PROPERTIES
& REAL ESTATESM

LUKE GOSSETT

LAND SPECIALIST

C: 662-832-8822

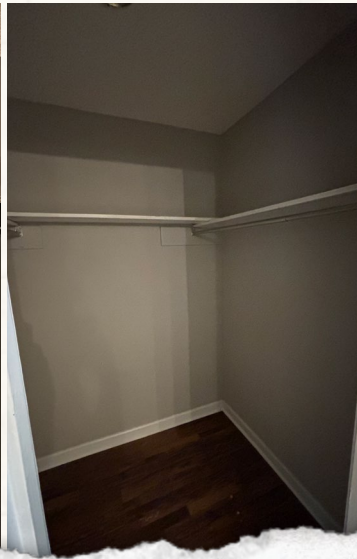
O: 662-238-4077

lgossett@smalltownproperties.com

50 CR 401 - Oxford, MS 38655

smalltownproperties.com

Information is believed to be accurate but not guaranteed.



SMALLTOWN
HUNTING PROPERTIES
& REAL ESTATESM

LUKE GOSSETT

LAND SPECIALIST

C: 662-832-8822

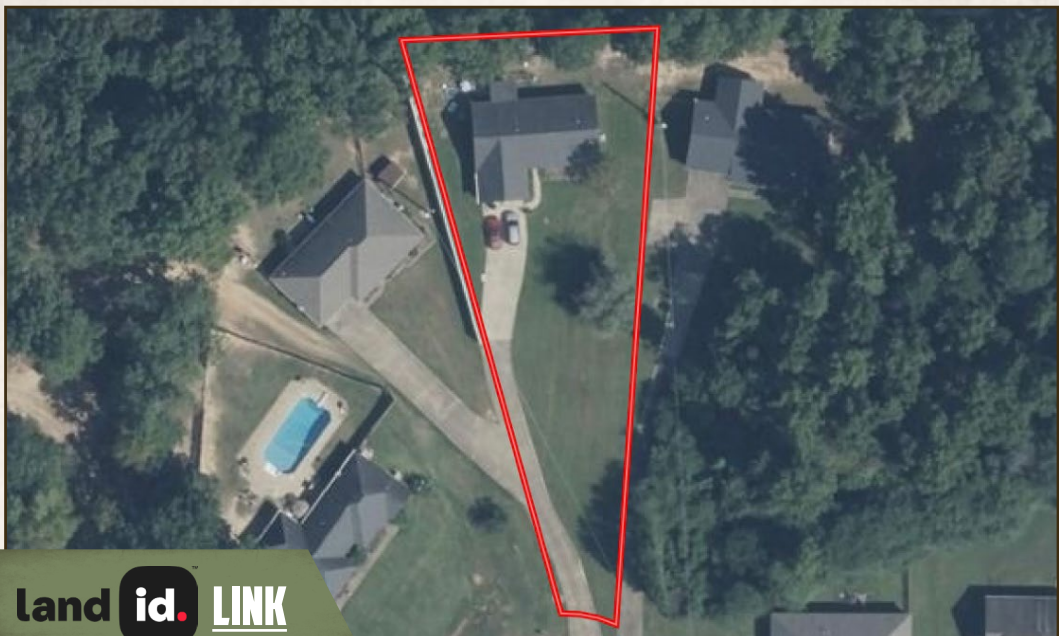
O: 662-238-4077

lgossett@smalltownproperties.com

50 CR 401 - Oxford, MS 38655

smalltownproperties.com

Information is believed to be accurate but not guaranteed.

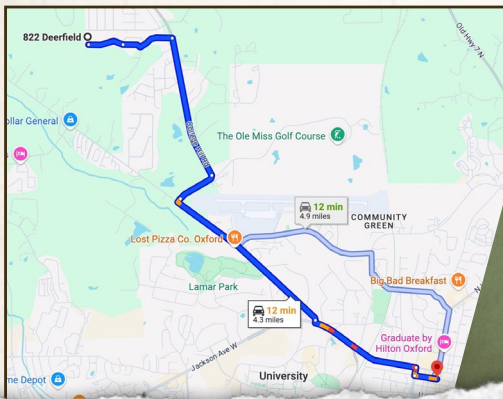


land id. LINK

Directions From Oxford, MS: Travel 1.0 mile west on Jackson Avenue. Turn right onto HWY 314/College Hill Road and proceed 1.5 miles. Turn right onto Golf Club Road and in 0.3 miles turn left on CR 102. Continue 1.0 mile and turn left on CR 140. Travel 0.6 miles to the home on the right.

**822 Deerfield Drive
Oxford, MS 38655**

LINK TO GOOGLE MAP DIRECTIONS



SMALLTOWN
HUNTING PROPERTIES
& REAL ESTATESM

LUKE GOSSETT

LAND SPECIALIST

C: 662-832-8822

O: 662-238-4077

lgossett@smalltownproperties.com

50 CR 401 - Oxford, MS 38655

smalltownproperties.com

Information is believed to be accurate but not guaranteed.