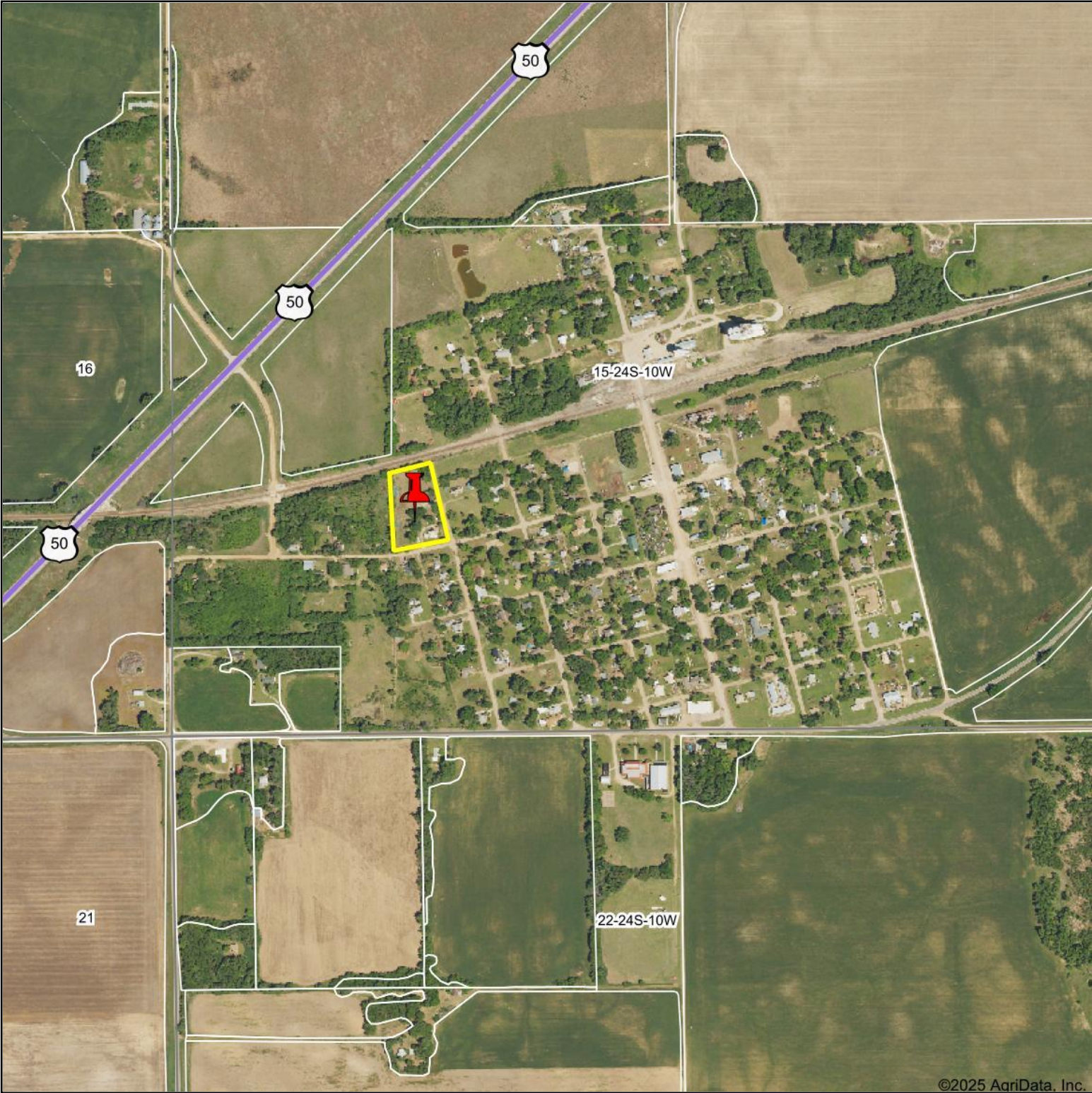
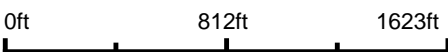


Aerial Map



Boundary Center: 37° 57' 31.51, -98° 24' 47.06



15-24S-10W
Reno County
Kansas



Maps Provided By:
 **surety**
CUSTOMIZED ONLINE MAPPING
© AgriData, Inc. 2023 www.AgriDataInc.com

11/6/2025

Field borders provided by Farm Service Agency as of 5/21/2008.