

HIGHLY ERODIBLE LAND AND WETLAND
CONSERVATION DETERMINATION

Boone

4. Name of USDA Agency or Person Requesting Determination

ASCS

5. Farm No. and Tract No.

f1031 t2614

SECTION I - HIGHLY ERODIBLE LAND

6. Is soil survey now available for making a highly erodible land determination?	Yes	No	Field No.(s)	Total Acres
7. Are there highly erodible soil map units on this farm?				
8. List highly erodible fields that, according to ASCS records, were used to produce an agricultural commodity in any crop year during 1981-1985.				
9. List highly erodible fields that have been or will be converted for the production of agricultural commodities and, according to ASCS records, were not used for this purpose in any crop year during 1981-1985; and were not enrolled in a USDA set-aside or diversion program.				
10. This Highly Erodible Land determination was completed in the: Office <input type="checkbox"/> Field <input type="checkbox"/>				

NOTE: If you have highly erodible cropland fields, you may need to have a conservation plan developed for these fields. For further information, contact the local office of the Soil Conservation Service.

SECTION II - WETLAND

11. Are there hydric soils on this farm?	Yes	No	Field No.(s)	Total Wetland Acres
	X			
List field numbers and acres, where appropriate, for the following EXEMPTED WETLANDS:				
12. Wetlands (W), including abandoned wetlands, or Farmed Wetlands (FW). Wetlands may be farmed under natural conditions. Farmed Wetlands may be farmed and maintained in the same manner as they were prior to December 23, 1985, as long as they are not abandoned.				11.4
13. Prior Converted Wetlands (PC) - The use, management, drainage, and alteration of prior converted wetlands (PC) are not subject to FSA unless the area reverts to wetland as a result of abandonment. You should inform SCS of any area to be used to produce an agricultural commodity that has not been cropped, managed, or maintained for 5 years or more.				
14. Artificial Wetlands (AW) - Artificial Wetlands includes irrigation induced wetlands. These Wetlands are not subject to FSA.				
15. Minimal Effect Wetlands (MW) - These wetlands are to be farmed according to the minimal effect agreement signed at the time the minimal effect determination was made.				
NON-EXEMPTED WETLANDS:				
16. Converted Wetlands (CW) - In any year that an agricultural commodity is planted on these Converted Wetlands, you will be ineligible for USDA benefits. If you believe that the conversion was commenced before December 23, 1985, or that the conversion was caused by a third party, contact the ASCS office to request a commenced or third party determination.				

17. The planned alteration measures on wetlands in fields _____ are considered maintenance and are in compliance with FSA.

18. The planned alteration measures on wetlands in fields _____ are not considered to be maintenance and if installed will cause the area to become a Converted Wetland (CW). See item 16 for information on CW.

19. This wetland determination was completed in the: Office ☒ Field ☐

20. This determination was: Delivered ☐ Mailed ☒ To the Person on Date: 3/25/91

NOTE: If you do not agree with this determination, you may request a reconsideration from the person that signed this form in Block 22 below. The reconsideration is a prerequisite for any further appeal. The request for the reconsideration must be in writing and must state your reasons for the request. The request must be mailed or delivered within 15 days after this determination is mailed to or otherwise made available to you. Please see reverse side of the producer's copy of this form for more information on appeals procedure.

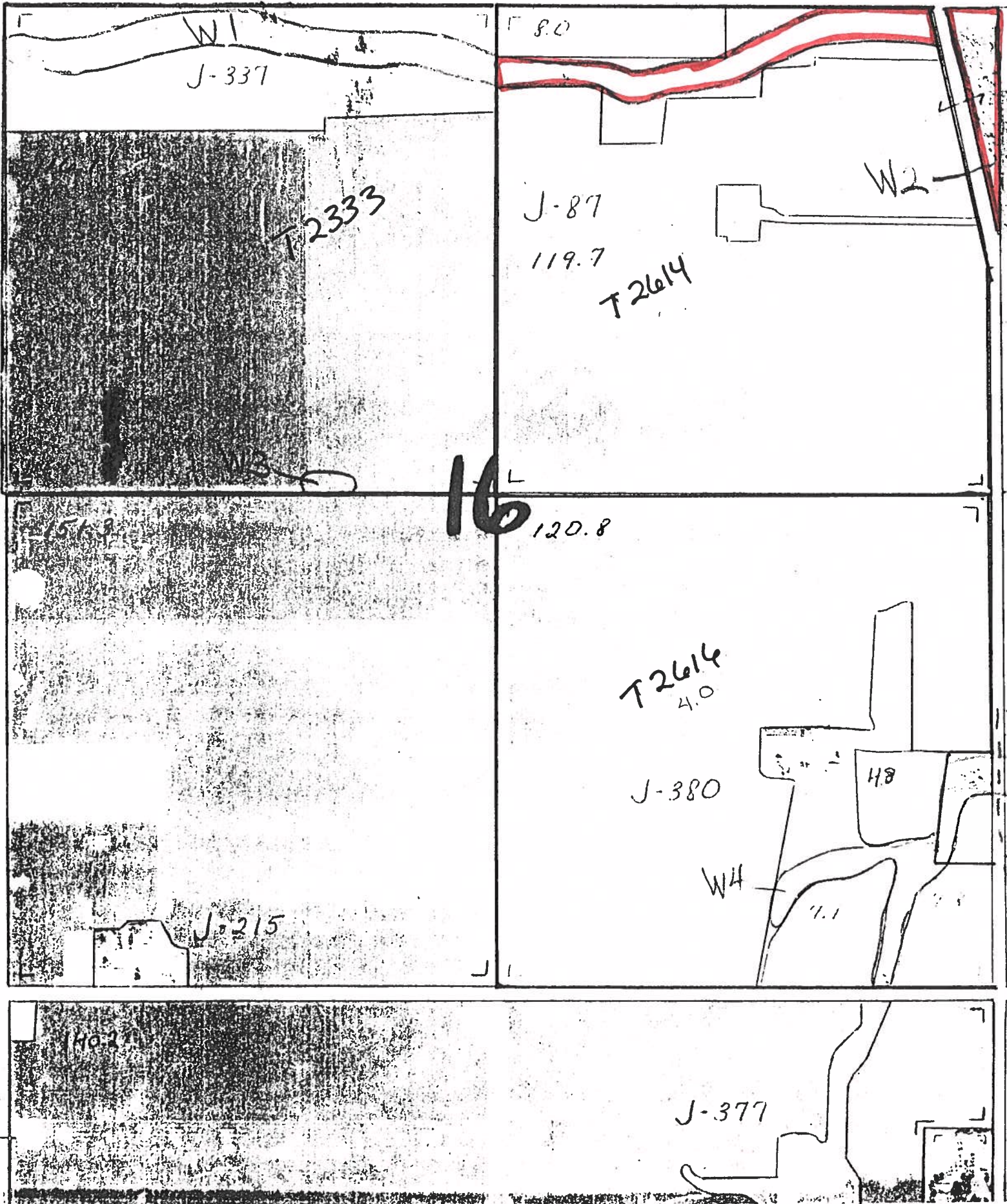
NOTE: If you intend to convert additional land to cropland or alter any wetlands, you must initiate another Form AD-1026 at the local office of ASCS. Abandonment is where land has not been cropped, managed, or maintained for 5 years or more. You should inform SCS if you plan to produce an agricultural commodity on abandoned wetlands.

21. Remarks

22. Signature of SCS District Conservationist

23. Date

Harrison 16



Any Area Not Delineated And
Labeled Are Either Non Wetland
Areas Or Prior Conversion Lands

K-3

12