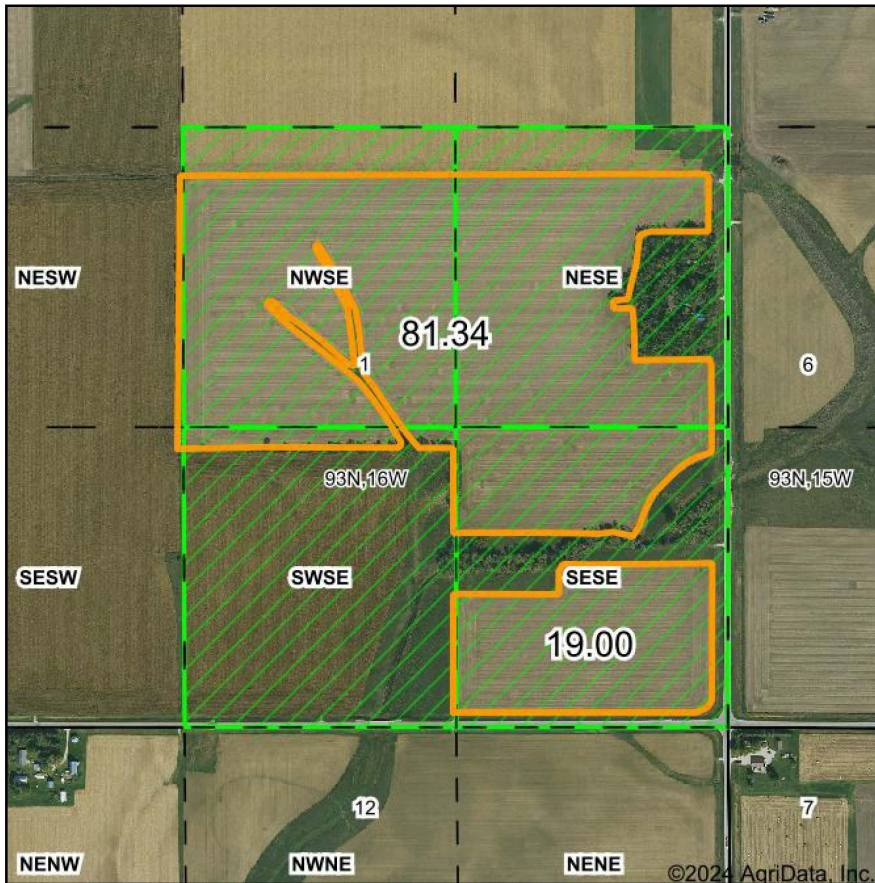
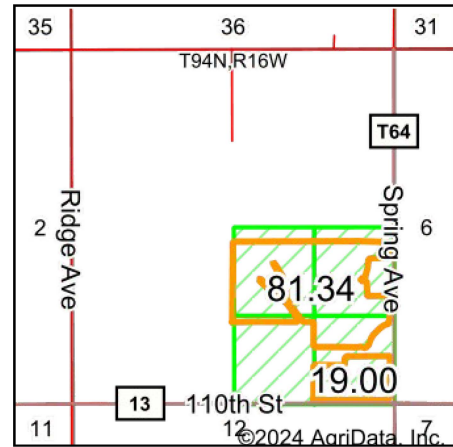


PLSS Legal Description



Map Center: 42° 53' 42.72, -92° 40' 44.12

0ft 795ft 1590ft



Acres: **100.34**
Date: **8/5/2024**
Township: **Dayton**
County: **Butler**
State: **Iowa**



Maps Provided By:



PLSS Source: **Bureau of Land Management (BLM)**

PLSS Note: **BLM contains Government Lots and Quarters. Availability and accuracy will vary by location**

Short Legal:

PT NWSE; PT NESE; PT SWSE; PT SESE 1-93N-16W

Long Legal:

PART OF THE NW1/4 SE1/4; PART OF THE NE1/4 SE1/4; PART OF THE SW1/4 SE1/4; PART OF THE SE1/4 SE1/4 OF SECTION 1, TOWNSHIP 93 NORTH, 16 WEST, BUTLER COUNTY, IOWA