

Overview

52.7 Acres, 1 Boundary



Overview

Henry County, GA

52.7 Acres, Boundary 1 of 1



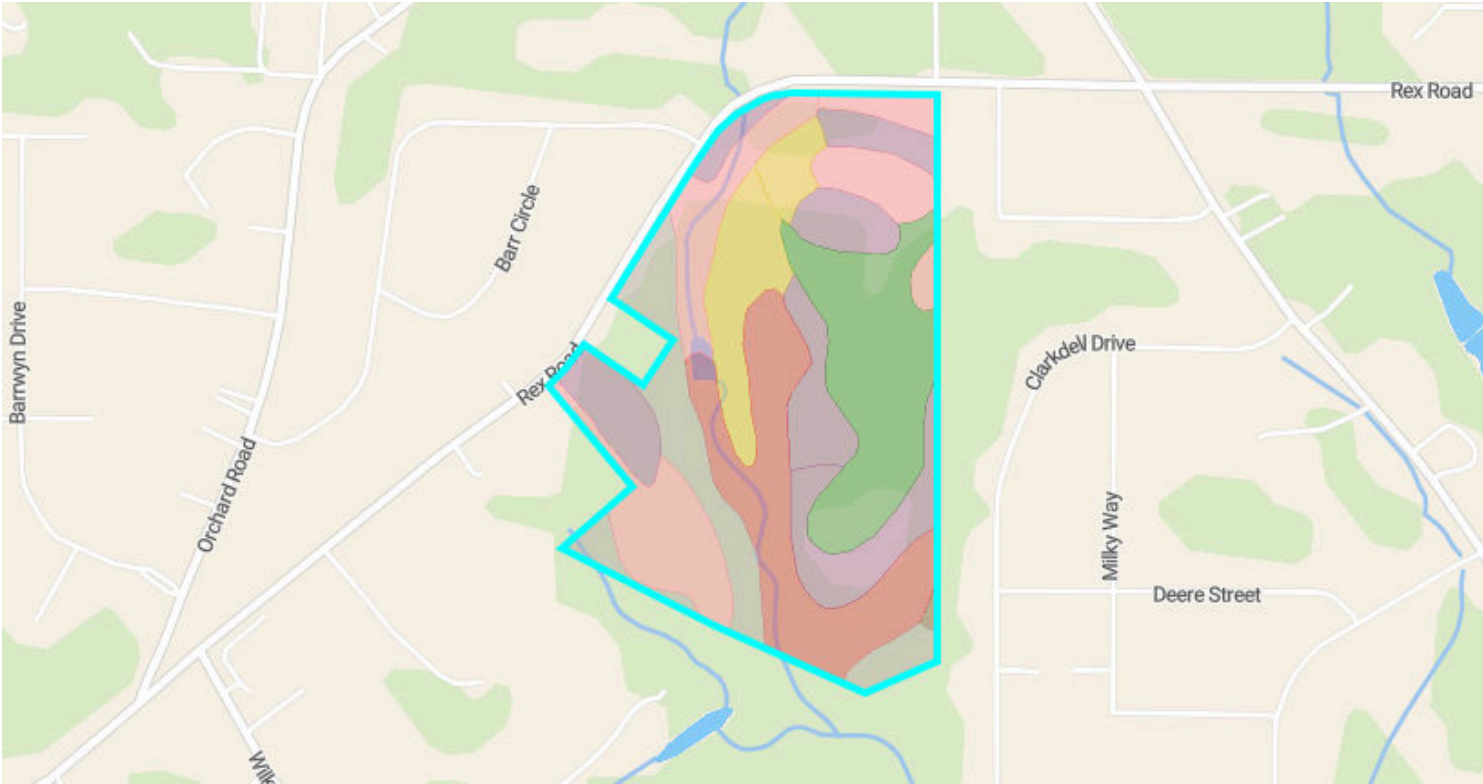
Henry County, GA
Township: -

Locations
-






Acres
52.67

Soils

52.7 Acres, 1 Boundary



 **59.8**/100 NCCPI

	Code	Soil Description	% of Selection	Acres	Non-IRR Class	IRR Class	NCCPI
	PaC	Pacolet sandy loam, 6 to 10 percent slopes	17.7%	9.3	3e	--	64
	CA	Cartecay loam, 0 to 2 percent slopes, frequently flooded	17.5%	9.2	5w	--	49.6
	MfE2	Madison sandy clay loam, 10 to 25 percent slopes, eroded	12.7%	6.7	7e	--	57.1
	PaE	Pacolet sandy loam, 10 to 25 percent slopes	12.0%	6.3	6e	--	59.4
	MfC2	Madison sandy clay loam, 6 to 10 percent slopes, moderately...	7.8%	4.1	4e	--	56.4

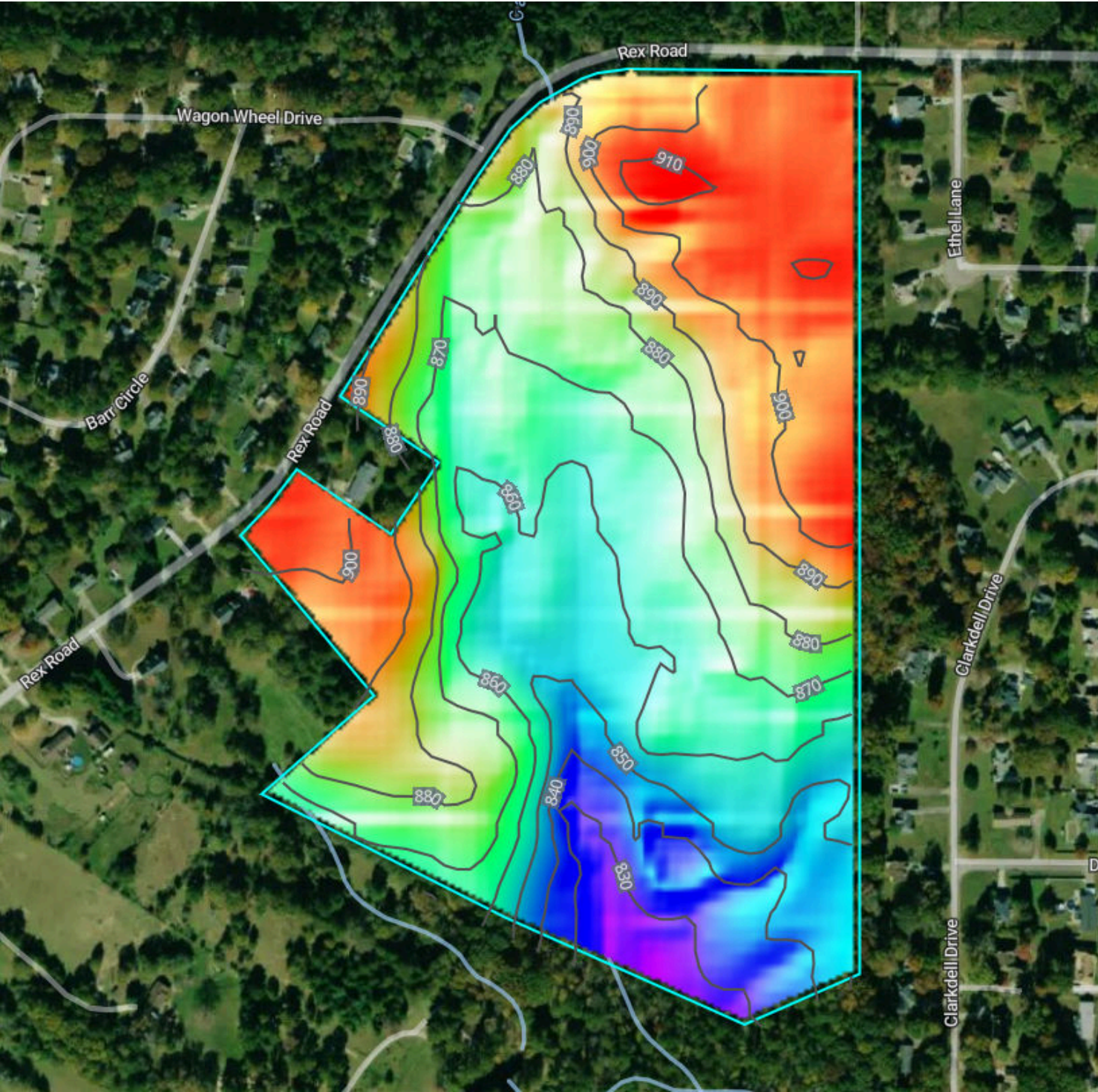
Soils

52.7 Acres, 1 Boundary

	Code	Soil Description	% of Selection	Acres	Non-IRR Class	IRR Class	NCCPI
●	AmB	Appling sandy loam, 2 to 6 percent slopes	7.4%	3.9	2e	--	74.9
●	CeB	Cecil sandy loam, 2 to 6 percent slopes	6.3%	3.3	2e	--	68.5
●	TS	Toccoa sandy loam, 0 to 2 percent slopes, frequently flooded	6.1%	3.2	3w	--	59.9
●	AmC	Appling sandy loam, 6 to 10 percent slopes	5.6%	2.9	3e	--	73.4
●	MdB	Madison sandy loam, 2 to 6 percent slopes	4.1%	2.2	2e	--	64.7
●	AtE	Ashlar sandy loam, very rocky, 10 to 25 percent slopes	2.5%	1.3	6e	--	19.5
●	CeC	Cecil sandy loam, 6 to 10 percent slopes	0.3%	0.1	3e	--	67.1
●	MdC	Madison sandy loam, 6 to 10 percent slopes	<0.1%	0	3e	--	63.4

Elevation

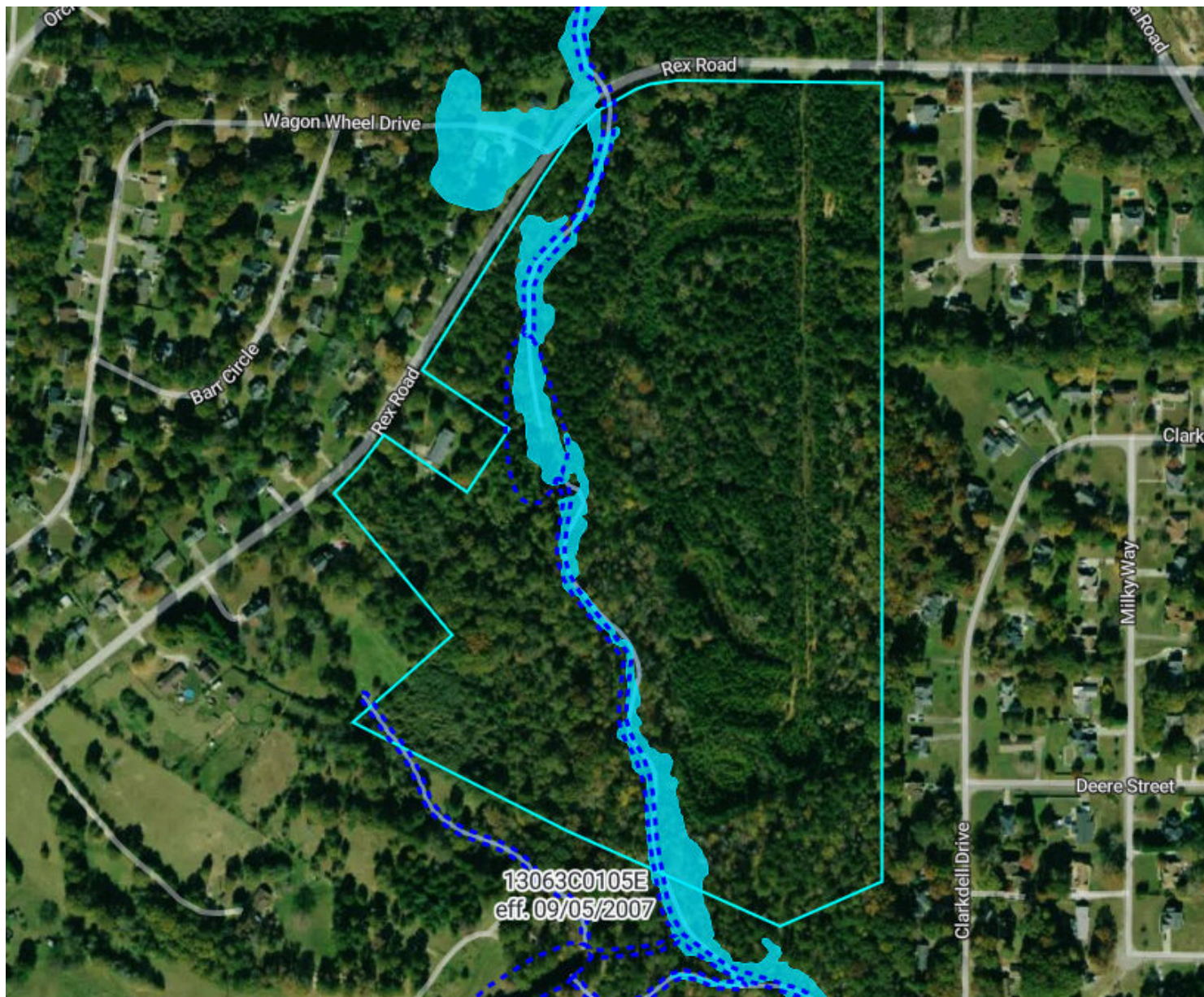
52.7 Acres, 1 Boundary



<div><div></div></div>				
821.3 feet		914.2 feet		
Source: USGS 3 Meter Dem	Interval: 10 feet	Range: 92.9 feet	Min: 821.3 feet	Max: 914.2 feet
		Slope: 7.8%	Min: 0.1%	Max: 36.2%

Flood (FEMA Report)

52.7 Acres, 1 Boundary



Flood Zone Hazard

- 0.2% annual flood hazard
- 1% annual flood hazard
- Future 1% annual flood hazard
- Increased risk due to levee
- Reduced risk due to levee
- Regulatory Floodway
- Special Floodway
- Wetlands

Historical Imagery

52.7 Acres, 1 Boundary

2023



2021

