

39290 ERLWEIN RD, Soldotna, AK 99669
39290 ERLWEIN RD,
Soldotna, AK 39290-9966

\$1,495,000
2.11± Acres
Kenai Peninsula County



39290 ERLWEIN RD, Soldotna, AK 99669
Soldotna, AK / Kenai Peninsula County

SUMMARY

Address

39290 ERLWEIN RD,

City, State Zip

Soldotna, AK 39290-9966

County

Kenai Peninsula County

Type

Residential Property, Business Opportunity, Lakefront, Beachfront

Latitude / Longitude

60.497185 / -150.919909

Dwelling Square Feet

3,048

Bedrooms / Bathrooms

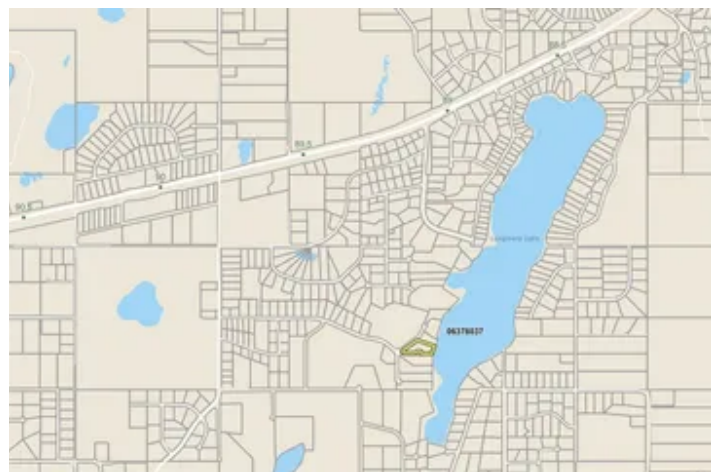
4 / 2

Acreage

2.11

Price

\$1,495,000



PROPERTY DESCRIPTION

LONGMERE LAKE WATERFRONT ESTATE |

Prestigious Lakefront Retreat with Year-Round Government Road-Maintained Access, Private Docking & Fly-In Capability

39290 Erlwein Road | Soldotna, Alaska

Seller relocating out of state and motivated to sell. Rare opportunity to acquire one of the Kenai Peninsula's premier fly-in lakefront estates on beautiful Longmere Lake.

Imagine stepping from your home to your floatplane, launching directly from one of the Kenai Peninsula's most sought-after lakes, and returning at sunset to watch moose wander the shoreline as the last light reflects across the water.

Welcome to **39290 Erlwein Road**, Parcel ID#06378037

a rare lakefront estate offering the best of Alaska living-direct floatplane access, private waterfront, acreage, multiple outbuildings, recreational freedom, and a premier location just minutes from Soldotna.

Situated on approximately **2.11 private acres** with direct frontage on beautiful **Longmere Lake**, this exceptional property features approximately **3,048 square feet of living space**, a detached shop, detached garage/storage building, mature spruce and birch trees, and one of the most desirable recreational waterfront settings on the Kenai Peninsula.

Properties that combine **waterfront living, floatplane access, privacy, usable acreage, multiple outbuildings, and close proximity to town** are becoming increasingly difficult to find. This is more than a home it's a true Alaska lifestyle property.

QUICK PROPERTY HIGHLIGHTS

Direct Floatplane Access

Longmere Lake Frontage

Approximately 2.11 Private Acres

Approximately 3,048 Square Feet

30' x 24' Shop (720 SF) Built 1995

44' x 20' Garage/Storage Building (880 SF) Built 1978

Boating, Fishing & Recreation

Room for RVs, Boats & Equipment

No Known HOA or CC&Rs

Minutes from Downtown Soldotna

Why Longmere Lake?



Longmere Lake is widely recognized as one of the Kenai Peninsula's most desirable recreational lakes. Known for its scenic beauty, floatplane accessibility, boating opportunities, fishing, wildlife viewing, and convenient location, Longmere attracts pilots, outdoor enthusiasts, second-home buyers, investors, and those seeking the authentic Alaska lifestyle.

Wake up to lake views.

Launch your floatplane from your own property.

Spend the day fishing nearby world-famous salmon rivers.

Return home to peace, privacy, and unforgettable Alaska sunsets.

This is the lifestyle people move to Alaska to experience.

Residence & Improvements

The residence offers approximately **3,048 square feet of living space** with numerous updates and improvements completed over time, including:

Natural gas conversion

Furnace replacement

Lower-level living area expansion

Roofing updates

Interior remodeling improvements

Extensive exterior improvements

Gravel driveway

Landscaping enhancements

The home's flexible layout provides ample room for full-time living, seasonal enjoyment, entertaining guests, or future vacation rental opportunities.

Exceptional Shop, Garage & Storage Space

One of the property's most valuable features is its abundance of detached storage and workspace.

Detached Shop

30' x 24' | 720 Square Feet | Built 1995

Perfect for:

- Workshop space
- Aircraft and floatplane equipment
- Boat maintenance
- Hobby projects
- Recreational gear storage
- Business equipment

Detached Garage & Storage Building



44' x 20' | 880 Square Feet | Built 1978

Ideal for:

- Vehicles
- Boats
- ATVs
- Snowmachines
- RV-related storage
- Additional workshop space
- Long-term equipment storage

Combined, these structures provide approximately **1,600 square feet of additional usable space**, a highly sought-after feature for Alaska property owners.

Recreation Right Outside Your Door

This property places you in the heart of Alaska's outdoor paradise.

Enjoy:

World-class salmon fishing

Boating and paddling

Floatplane access

Wildlife viewing

Hiking and outdoor exploration

Year-round adventure

Northern Lights viewing

Frequent moose sightings

Whether you're an angler, pilot, hunter, outdoor enthusiast, or simply someone seeking privacy and natural beauty, this property delivers.

Prime Soldotna Location

One of the greatest advantages of this property is its rare combination of privacy and convenience.

Just minutes away:

Downtown Soldotna

Shopping and groceries

Restaurants and local dining

Central Peninsula Hospital

Soldotna Airport



Kenai Municipal Airport

Kenai River access

Schools and community services

Easy access to Homer, Seward, Cooper Landing, and the greater Kenai Peninsula

Enjoy lakefront seclusion without sacrificing access to modern amenities.

Investment & Future Potential

With no known HOA or CC&Rs, this property offers exceptional flexibility.

Potential uses include:

Private lakefront residence

Fly-in retreat

Fishing lodge opportunity

Executive Alaska getaway

Multi-generational family compound

Recreational estate

Remote-work retreat

Vacation rental or Airbnb investment

The combination of acreage, waterfront access, detached structures, and location creates long-term value that is increasingly difficult to replicate.

A Rare Opportunity on the Kenai Peninsula

Opportunities to purchase **large-acreage, lakefront, floatplane-accessible properties with multiple outbuildings and no known CC&Rs near Soldotna are increasingly rare.**

Whether you're searching for:

An Alaska aviation property

A waterfront estate

A fishing retreat

A second home

A private Alaska getaway

An investment property

A legacy family estate



...this property offers a combination of features that few properties can match.

Own the Alaska Lifestyle

From direct lake frontage and floatplane access to recreational freedom and proximity to Soldotna, **39290 Erlwein Road** represents a unique opportunity to own one of Longmere Lake's premier waterfront properties.

Seller relocating out of state and motivated to sell. Schedule your private showing today and discover why properties like this are rarely available and nearly impossible to recreate at today's costs.

Longmere Lake - Soldotna Alaska - Kenai Peninsula Waterfront Property - Alaska Lakefront Home - Floatplane Property - Fly-In Estate - Alaska Waterfront Real Estate - Aviation Property - Fishing Lodge Opportunity - Alaska Retreat Property - Waterfront Acreage - Recreational Property - Luxury Alaska Home - Vacation Rental Opportunity - Lakefront Estate - Floatplane Accessible Property

Alaska Waterfront Living at Its Finest

From floatplane access and private lake frontage to world class fishing and year round recreation, this Longmere Lake property offers a rare opportunity to own a true Alaska lifestyle retreat in the heart of the Kenai Peninsula. Whether you are searching for a private getaway, luxury second home, investment property, Airbnb opportunity, or future lodge potential, 39290 Erlwein Rd delivers exceptional flexibility, privacy, and long term value. With no known CC&Rs, direct access to one of the area's premier recreational lakes, and convenient proximity to downtown Soldotna, this is the kind of Alaska property that rarely becomes available and is nearly impossible to replicate.



39290 ERLWEIN RD, Soldotna, AK 99669
Soldotna, AK / Kenai Peninsula County



Locator Map



Locator Map



Satellite Map



DISCLAIMERS

Information provided is deemed reliable but is not guaranteed and should be independently verified by Buyer and Buyer's Agent. Buyer is encouraged to conduct their own due diligence regarding all aspects of the property. Mossy Oak Properties of Alaska and its agents make no warranties or representations as to the accuracy or completeness of the information herein.



Mossy Oak Properties of Alaska - Wasilla
2901 Bogard
Wasilla, AK 99687
(907) 357-5100
<https://www.mopalaska.com/>

