

20 Acres in Mount Pleasant  
3310 Booker Ridge Road  
Mount Pleasant, TN 38474

**\$1,120,000**  
20.350± Acres  
Maury County



**20 Acres in Mount Pleasant**  
**Mount Pleasant, TN / Maury County**

**SUMMARY**

**Address**

3310 Booker Ridge Road

**City, State Zip**

Mount Pleasant, TN 38474

**County**

Maury County

**Type**

Farms, Recreational Land, Residential Property, Single Family,  
Business Opportunity, Horse Property

**Latitude / Longitude**

35.616366 / -87.233713

**Dwelling Square Feet**

3182

**Bedrooms / Bathrooms**

4 / 3

**Acreage**

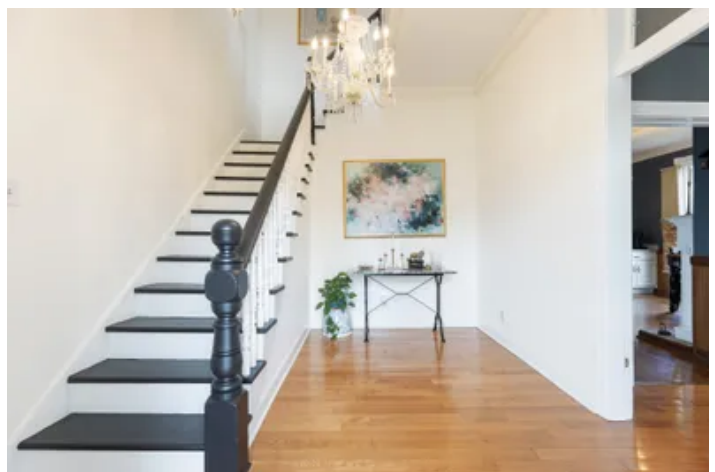
20.350

**Price**

\$1,120,000

**Property Website**

<https://mcewengroup.com/property/20-acres-in-mount-pleasant-maury-tennessee/81726/>



**MC EWEN GROUP**

FARMS | RECREATIONAL PROPERTIES | ESTATES

## 20 Acres in Mount Pleasant Mount Pleasant, TN / Maury County

---

### **PROPERTY DESCRIPTION**

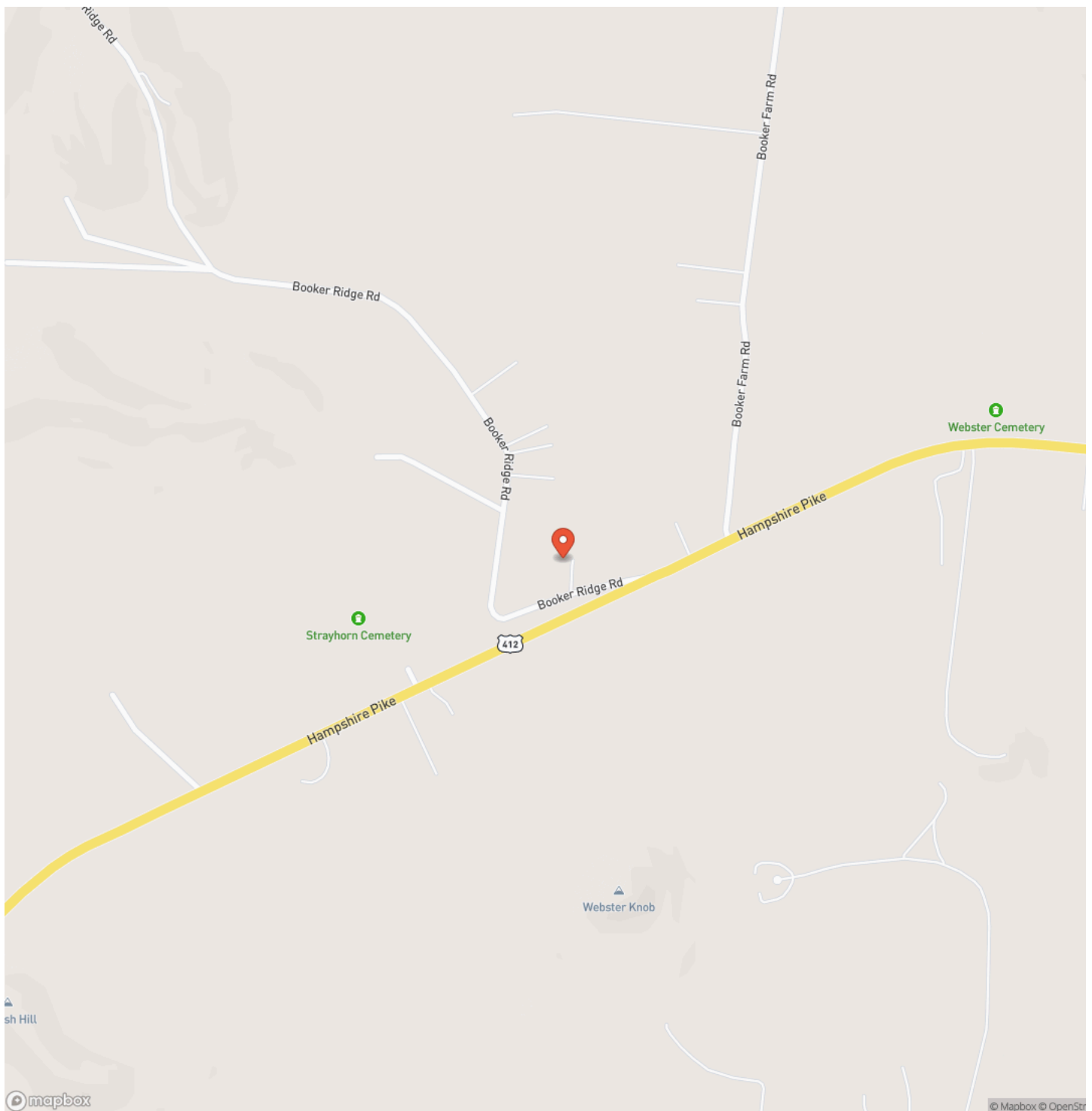
Step back in time while enjoying modern comforts in this beautifully preserved early-1900s farmhouse nestled on 20 stunning acres. This timeless 4-bedroom, 3-bathroom home blends classic character with thoughtful updates, offering the perfect retreat for those seeking a peaceful rural lifestyle with room to grow. Inside, you'll find original woodwork and period details that showcase the home's historic charm. The kitchen features updated appliances, ample cabinetry, and views of the surrounding pastures. A cozy living room is centered around a charming fireplace, which invites warm gatherings, while the formal dining area is perfect for family meals or entertaining. Each of the four bedrooms is generously sized, including a main-floor primary suite with an en-suite bath. Step outside to embrace the full potential of country living. The property includes two large barns, ideal for livestock or storage, and a separate shop for projects, hobbies, or equipment. With 20 acres of usable land, the possibilities are endless—whether you're dreaming of a hobby farm, equestrian setup, or simply wide-open space. Mature trees, fenced pasture, and scenic views complete the picture. Enjoy sunrises on the front porch and stargazing at night—all just a short drive from town, yet worlds away from the hustle and bustle. Don't miss this rare opportunity to own a piece of history and make it your own.



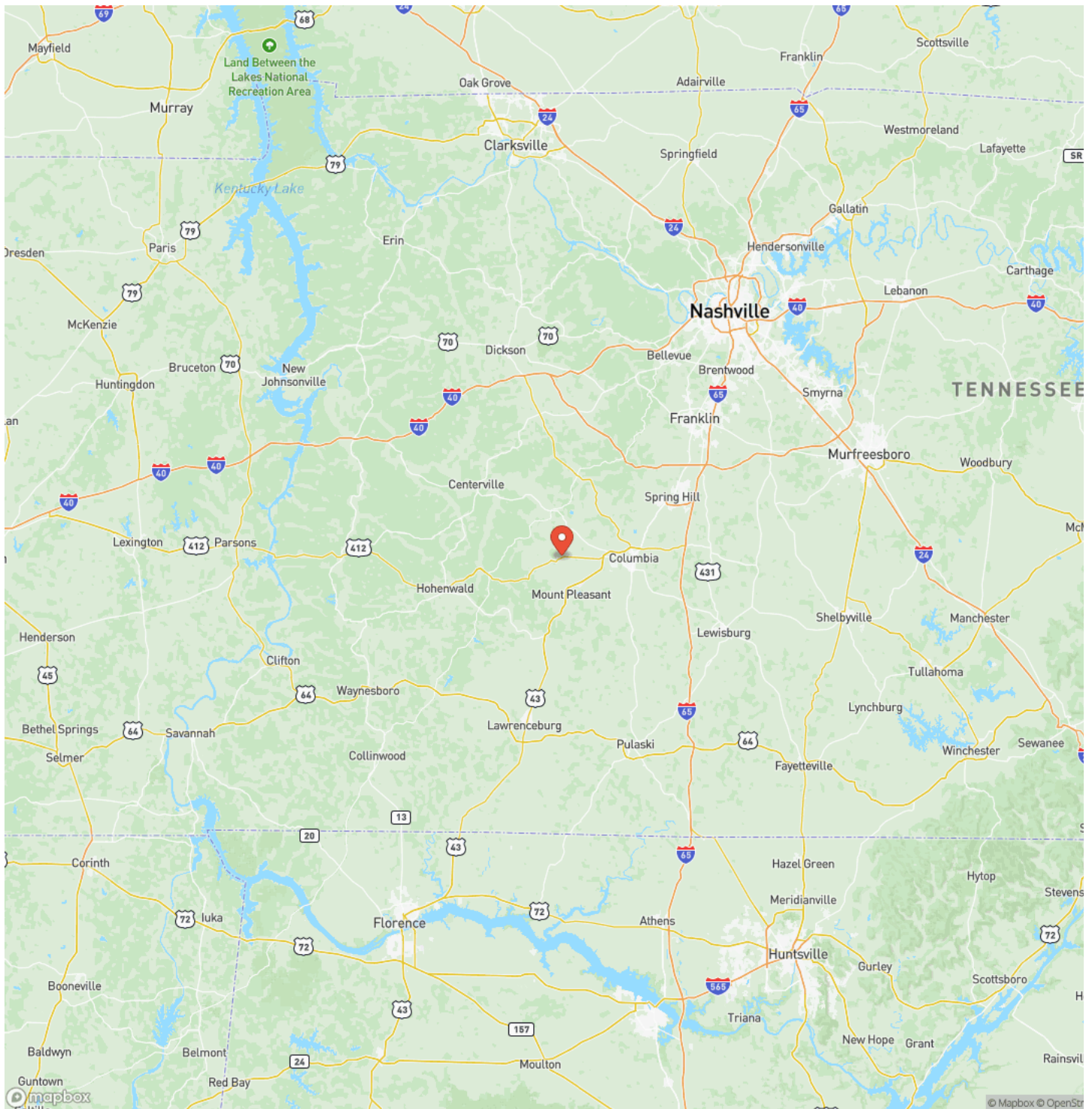
20 Acres in Mount Pleasant  
Mount Pleasant, TN / Maury County



## Locator Map



## Locator Map

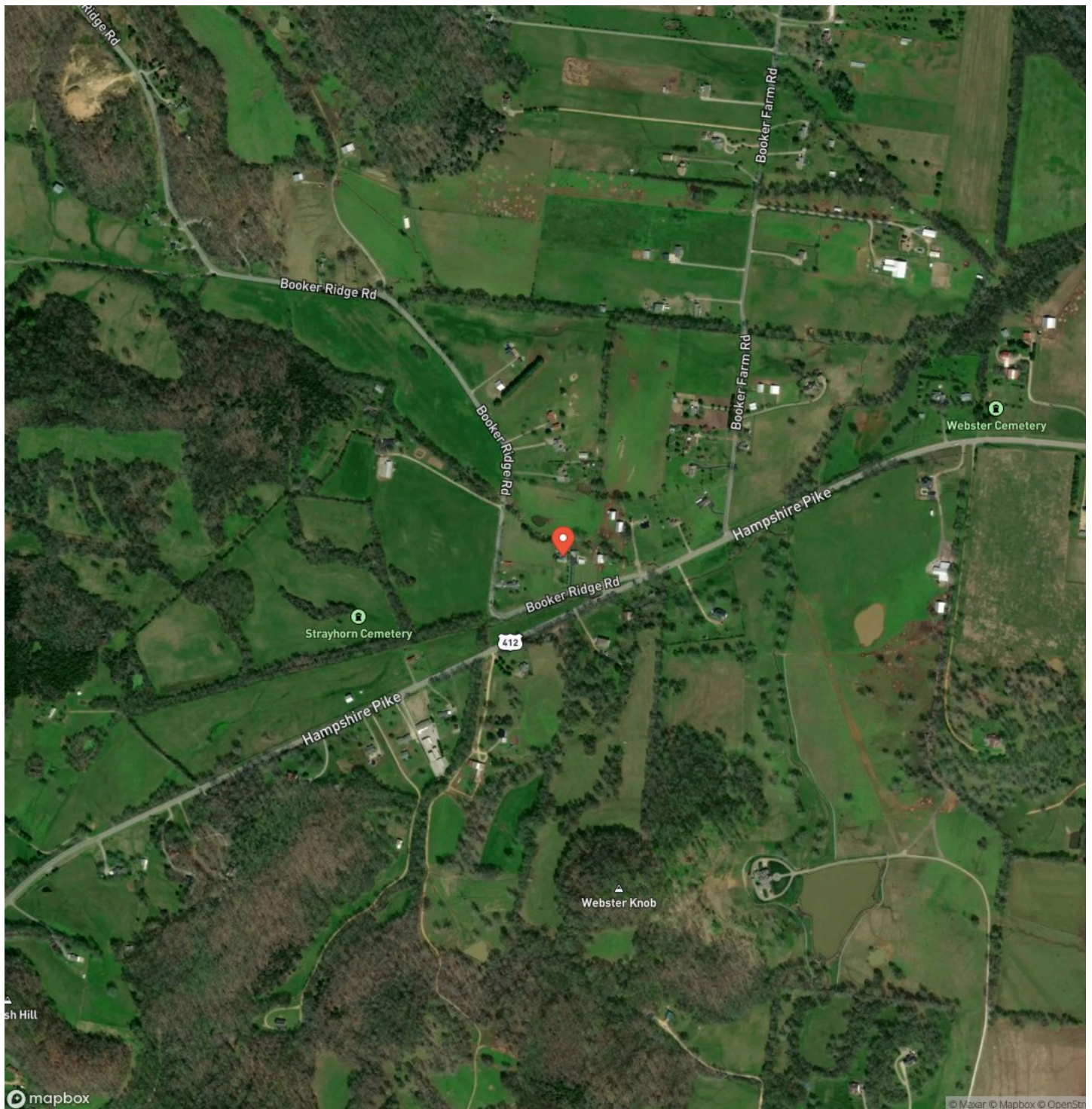


**MC EWEN GROUP**

FARMS | RECREATIONAL PROPERTIES | ESTATES



## Satellite Map



**20 Acres in Mount Pleasant**  
**Mount Pleasant, TN / Maury County**

## LISTING REPRESENTATIVE

**For more information contact:**



### Representative

Walker Hoyer

## Mobile

(931) 698-3290

## Office

(931) 381-1808

## Email

walker@mcewengroup.com

**Address**

17A Public Sq

## City / State / Zip

## NOTES

[illegible]



## This image shows a single sheet of white paper with horizontal blue ruling lines. The lines are evenly spaced and run across the width of the page. There are no margins, text, or other markings on the paper.

## **DISCLAIMERS**

Information in this brochure is provided solely for information purposes and does not constitute an offer to sell or advertise real estate outside the states in which broker or agent licensed. The information presented has been obtained from sources deemed to be reliable, but is not guaranteed or warranted by the agent, broker, or the sellers of these properties. This offering is subject to errors, omissions, prior sale, price change, correction or withdrawal from the market without notice. All references to age, square footage, income, expenses, acreage, carrying capacity, and land classification, etc. are approximate. Prospective buyers are chargeable with and expected to conduct their own independent investigation of the information and the property and to rely only on those results. Sellers reserve the right to accept or reject any and all offers without liability to any buyer or cooperating broker.

Maps are provided for illustration purposes only, the accuracy is not warranted. Parcels on interactive maps are not adjusted to match aerial backgrounds. This information is for reference purposes only and is not a legal document. Data maps contain errors. The seller and seller's agent are making known to all potential buyers that there may be variations between the location of the existing fence lines and the legal description of the deeded property. Seller and seller's agent make no warranties with regard to the location of the fence lines in relationship to the deeded property lines, nor does the Seller make any warranties or representations with regard to the specific acreage contained within the fenced property lines. Seller is selling the property in an "as is" condition, which includes the location of the fences as they exist. Boundaries shown on the accompanying maps are approximate, based on county parcel data. The maps are not to scale. The accuracy of the maps is not guaranteed. Prospective buyers are encouraged to verify fence lines, deeded property lines and acreages using a licensed surveyor at their own expense.



---

**McEwen Group, LLC**  
17A Public Sq  
Columbia, TN 38401  
(931) 381-1808  
[www.mcewengroup.com](http://www.mcewengroup.com)

---