

**Camp Silver Creek – Recreational Retreat on 82± Acres |**  
**Foxworth, MS**  
1608 Highway 586  
Foxworth, MS 39483

**\$799,000**  
82± Acres  
Marion County



**Camp Silver Creek – Recreational Retreat on 82± Acres | Foxworth, MS**  
**Foxworth, MS / Marion County**

**SUMMARY**

**Address**

1608 Highway 586

**City, State Zip**

Foxworth, MS 39483

**County**

Marion County

**Type**

Commercial, Recreational Land, Hunting Land

**Latitude / Longitude**

31.235359 / -89.921844

**Acreage**

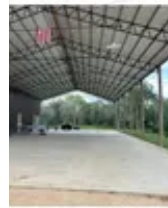
82

**Price**

\$799,000

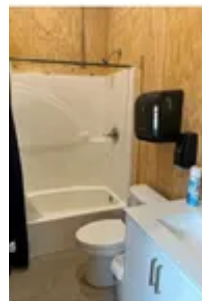
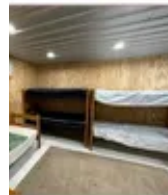
**Property Website**

<https://www.mossoakproperties.com/property/camp-silver-creek-recreational-retreat-on-82-acres-foxworth-ms-marion-mississippi/85972/>



*MAIN PAVILION*

- 40 ft by 80 ft covered area
- Seating and tables for 125 people
- Commercial kitchen
- 2 full bathrooms
- Living room/meeting area
- Bedroom (sleeps 7)
- Bathroom (sleeps 8+)
- 2 Storage Rooms



## Camp Silver Creek – Recreational Retreat on 82± Acres | Foxworth, MS Foxworth, MS / Marion County

---

### **PROPERTY DESCRIPTION**

Welcome to a rare opportunity to own an 82+/-acre recreational retreat designed for hosting, exploring, and enjoying the outdoors. With a mix of cleared land, wooded habitat, and well-planned facilities, this property offers the ideal combination of comfort, recreation, and long-term income potential.

At its heart, you'll find a central pavilion featuring a fully furnished living area with 2 bedrooms, 16 total beds (8 bunk beds), a commercial-grade kitchen, a kitchenette with refrigerator and sink, 2 showers, 2 toilets, an outdoor shower, and mini-split A/C for year-round comfort. The covered front porch and fire pit overlook the nearby creek, offering a peaceful, scenic atmosphere. Built with metal siding and roofing, the structure is both durable and low-maintenance.

Complementing the pavilion are 7 additional bunk-style cabins with 16 beds each, designed with comfort and ease of upkeep in mind. In total, the property can comfortably accommodate up to 125 guests, making it ideal for retreats, family reunions, camps, corporate events, or short-term lodging.

The land itself is equally impressive-approximately 82 acres, including nearly 40 acres of wooded habitat with established trails for hiking, nature walks, or ATV rides. The remaining acreage includes open recreational space, a stocked pond, picnic areas, and access to two spring-fed creeks perfect for swimming, kayaking, or relaxing by the water.

What truly sets this property apart is its built-in potential for growth. With ample open space near the creek, there's room to expand the existing cabin rentals, add additional lodging, or develop a full-scale RV campsite, wooded area could be developed into an aerial zip line adventure, or short term rental cabins. Whether you're planning a larger hospitality venture, an event destination, or simply want space to grow, this property offers flexibility and room to scale.

Whether you're envisioning a private retreat, a group lodging destination, or an investment with recreational value, this property offers unmatched space, natural beauty, and future potential-all in one unforgettable setting.

#### Location & Nearby Attractions:

The Yards Sportsplex (Host year round tournament baseball and softball)

10 min to Red Bluff (hiking)

15-20 min to Bogue Chitto River (canoeing/tubing)

20 min to Lake Columbia or Lake Bill Waller

Under 1 hour to Hattiesburg, MS

2 hours to New Orleans or Baton Rouge, LA

2 1/2 hours to Mobile AL

Less than 2 hours to Jackson MS

Schedule your private tour today and discover all that this extraordinary property has to offer.



### CABINS

There are 7 similar 20 ft by 34 ft cabins:

- 16 beds each (8 bunk beds)
- Kitchenette (refrigerator and sink)
- 2 showers
- 2 toilets
- Mini-split air conditioning
- Outdoor shower
- Front porch
- Fire pit
- Each faces creek
- Low maintenance (metal siding and roof)



## Locator Map



## Locator Map



## Satellite Map







## **DISCLAIMERS**

Part of tax parcel 043-17-000-17-012.02 containing 18 acres more or less will not be sold with the property, a legal description will be provided with the 18 acres more or less removed from tax parcel 043-17-000-17-012.02 prior to closing. The listing will include 82 acres more or less pending survey.

All scheduled Camp Silver Creek events are to be honored post sale and must be included in any sales contract.

No mowers, farm equipment, tractors, or skid steers seen in photos will be sold with property.

Acreage listed is approximate, maps are for reference only.

---

**Mossy Oak Properties Posey Land Company**  
105 W Chickasaw St Suite C  
Brookhaven, MS 39601  
(601) 597-9378  
<https://www.mossyoakproperties.com/>

---