

**PROLE, IA**

**LISTING #18400**

**WARREN COUNTY, IA**  
**6.09**  
ACRES M/L

# **EXECUTIVE**

**scenic homesite**  
**OPPORTUNITY**

**Nestled in the scenic landscape of Warren County, this premier property offers breathtaking countryside views and the peaceful privacy that discerning buyers seek.**



**KALEN LUDWIG**  
515.402.3169  
[Kalen@PeoplesCompany.com](mailto:Kalen@PeoplesCompany.com)



**KEATON DREHER**  
515.650.1276  
[Keaton@PeoplesCompany.com](mailto:Keaton@PeoplesCompany.com)



12119 Stratford Drive  
Clive, IA 50325

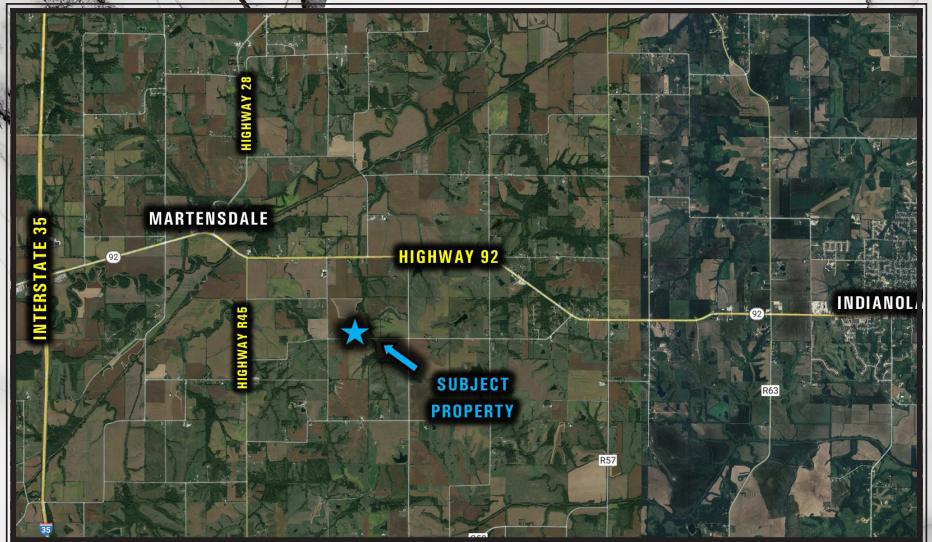


PeoplesCompany.com  
Listing #18400

Located just one mile south of Highway 92 and 1.5 miles east of Highway R45, with seamless access to Interstate 35, you're only a short drive from Norwalk, Indianola, and the entire Des Moines Metro - making this the ideal balance of rural tranquility and urban convenience.

Electric service is available through Clarke Electric Cooperative, Inc., and there are no restrictive covenants, giving you the freedom to design and build your dream home exactly the way you envision it.

Enjoy the space, serenity, and sweeping vistas - without sacrificing proximity to schools, shopping, and amenities. Executive sites of this caliber are hard to come by. Don't miss your chance to build in one of central Iowa's most desirable areas. Contact the listing agent today for details on rural water availability and to schedule a private viewing.



**KALEN LUDWIG**  
515.402.3169  
Kalen@PeoplesCompany.com



**KEATON DREHER**  
515.650.1276  
Keaton@PeoplesCompany.com

All information, regardless of source, is deemed reliable but not guaranteed and should be independently verified. The information may not be used for any purpose other than to identify and analyze properties and services. The data contained herein is copyrighted by Peoples Company and is protected by all applicable copyright laws. Any dissemination of this information is in violation of copyright laws and is strictly prohibited.