



TRACT 2  
AERIAL MAP



Center: 42.373641, -91.081569

04-87N-2W

Cascade Township

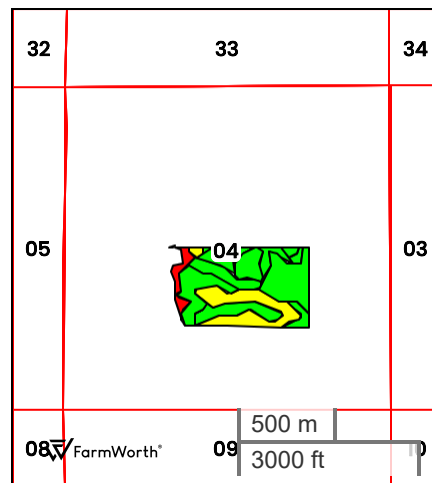
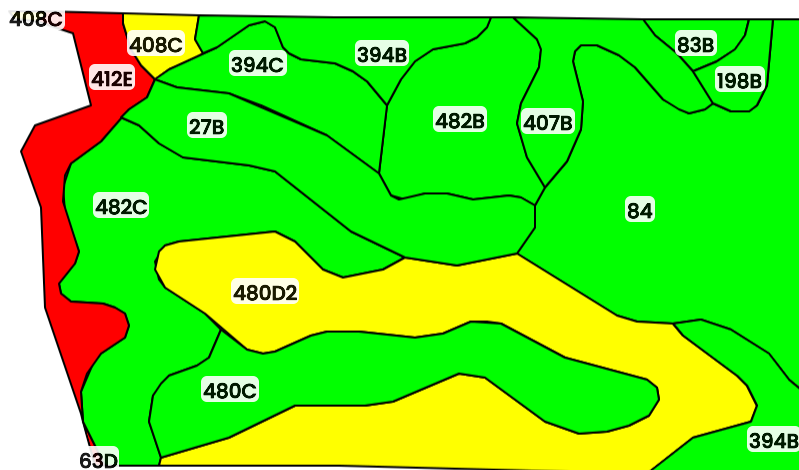
Dubuque County, IA



FarmWorth, LLC makes no representations or warranties, express or implied, as to the accuracy of any information, data, numerical values, boundaries, or any other information generated through the use of FarmWorth.com. User is solely responsible for independently investigating and determining all information provided through FarmWorth.com prior to use and waives any and all claims against FarmWorth, LLC for any inaccuracies or inconsistencies in the information and/or data.



# TRACT 2 TOTAL SOILS



County: **Dubuque County, IA**  
Location: **04-87N-2W**  
Township: **Cascade**  
Acres: **64.52**  
Date: **12/15/2025**



Field borders obtained from Farm Service Agency  
as of 2008

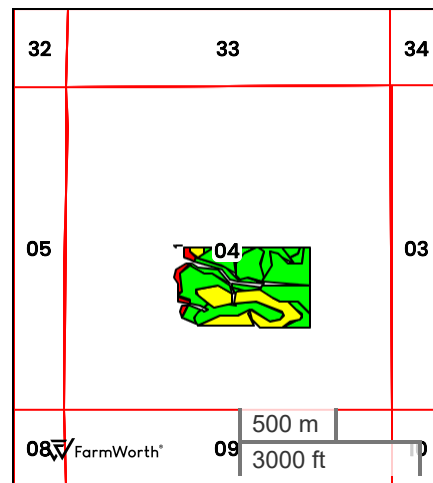
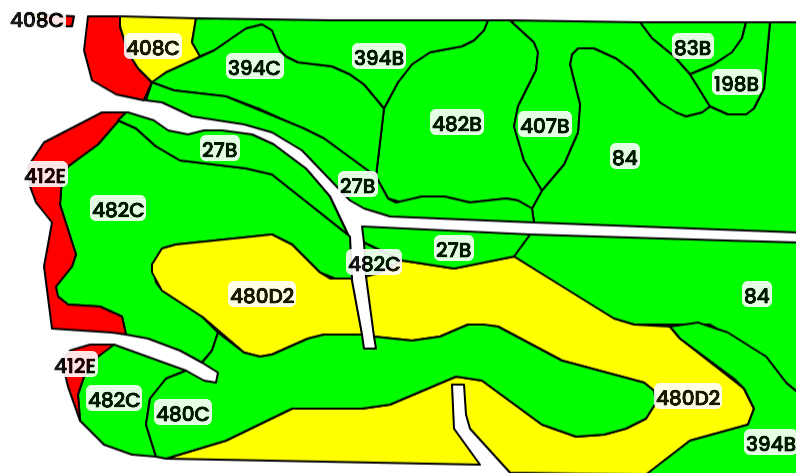
FarmWorth, LLC makes no representations or warranties, express or implied, as to the accuracy of any information, data, numerical values, boundaries, or any other information generated through the use of FarmWorth.com. User is solely responsible for independently investigating and determining all information provided through FarmWorth.com prior to use and waives any and all claims against FarmWorth, LLC for any inaccuracies or inconsistencies in the information and/or data.

Code	Description	Acres	% of field	IA CSR2	Drainage Class
480D2	Orwood silt loam, 9 to 14 percent slopes, moderately eroded	13.79	21.38 %	52	Well drained
84	Clyde loam, 0 to 2 percent slopes	11.63	18.03 %	89	Poorly drained
482C	Racine loam, 5 to 9 percent slopes	8.20	12.71 %	75	Well drained
480C	Orwood silt loam, 5 to 9 percent slopes	6.45	10.00 %	81	Well drained
27B	Terril loam, 2 to 5 percent slopes	5.00	7.75 %	89	Moderately well drained
394B	Ostrander loam, 2 to 5 percent slopes	4.32	6.70 %	88	Well drained
482B	Racine loam, 2 to 5 percent slopes	4.22	6.54 %	76	Well drained
412E	Emeline loam, 9 to 18 percent slopes	3.46	5.36 %	5	Somewhat excessively drained
394C	Ostrander loam, 5 to 9 percent slopes	2.61	4.05 %	83	Well drained
407B	Schley loam, 1 to 4 percent slopes	2.54	3.94 %	81	Somewhat poorly drained
198B	Floyd loam, 1 to 4 percent slopes	0.84	1.30 %	89	Somewhat poorly drained
408C	Olin sandy loam, 5 to 9 percent slopes	0.76	1.18 %	59	Well drained
83B	Kenyon loam, 2 to 5 percent slopes	0.65	1.01 %	90	Moderately well drained
63D	Chelsea loamy fine sand, 9 to 14 percent slopes	0.04	0.06 %	5	Excessively drained
Average:				72.1	

IA has updated the CSR values for each county to CSR2.  
Soils data provided by USDA and NRCS.



# TRACT 2 TILLABLE SOILS



County: **Dubuque County, IA**  
Location: **04-87N-2W**  
Township: **Cascade**  
Acres: **59.97**  
Date: **12/15/2025**



Field borders obtained from Farm Service Agency  
as of 2008

FarmWorth, LLC makes no representations or warranties, express or implied, as to the accuracy of any information, data, numerical values, boundaries, or any other information generated through the use of FarmWorth.com. User is solely responsible for independently investigating and determining all information provided through FarmWorth.com prior to use and waives any and all claims against FarmWorth, LLC for any inaccuracies or inconsistencies in the information and/or data.

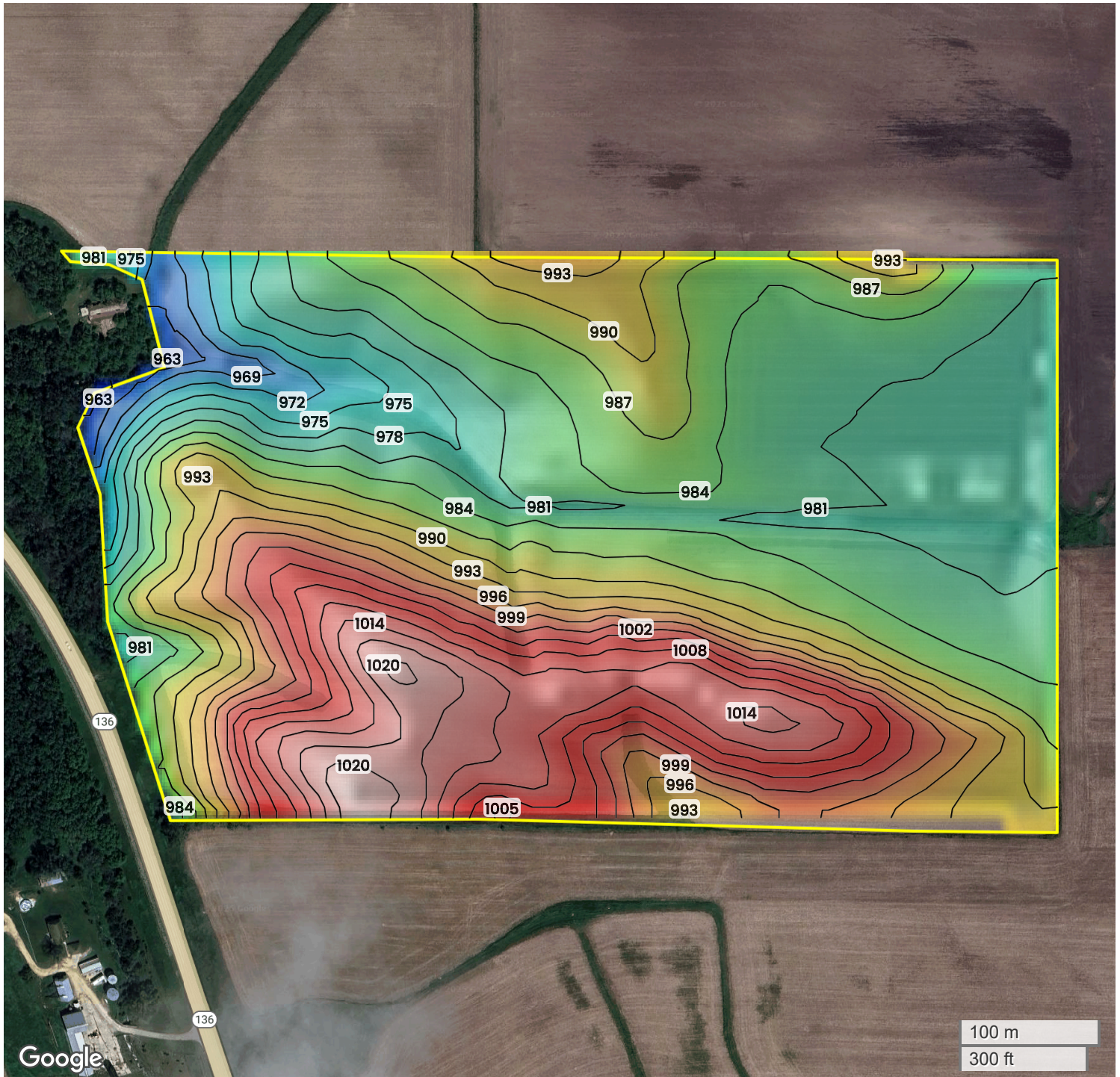
Code	Description	Acres	% of field	IA CSR2	Drainage Class
480D2	Orwood silt loam, 9 to 14 percent slopes, moderately eroded	12.87	21.46 %	52	Well drained
84	Clyde loam, 0 to 2 percent slopes	11.07	18.46 %	89	Poorly drained
482C	Racine loam, 5 to 9 percent slopes	7.63	12.72 %	75	Well drained
480C	Orwood silt loam, 5 to 9 percent slopes	6.35	10.59 %	81	Well drained
394B	Ostrander loam, 2 to 5 percent slopes	4.30	7.17 %	88	Well drained
482B	Racine loam, 2 to 5 percent slopes	4.22	7.04 %	76	Well drained
27B	Terril loam, 2 to 5 percent slopes	3.85	6.42 %	89	Moderately well drained
394C	Ostrander loam, 5 to 9 percent slopes	2.61	4.35 %	83	Well drained
407B	Schley loam, 1 to 4 percent slopes	2.54	4.23 %	81	Somewhat poorly drained
412E	Emeline loam, 9 to 18 percent slopes	2.33	3.88 %	5	Somewhat excessively drained
198B	Floyd loam, 1 to 4 percent slopes	0.84	1.40 %	89	Somewhat poorly drained
408C	Olin sandy loam, 5 to 9 percent slopes	0.72	1.20 %	59	Well drained
83B	Kenyon loam, 2 to 5 percent slopes	0.65	1.08 %	90	Moderately well drained
Average:				73.2	

IA has updated the CSR values for each county to CSR2.  
Soils data provided by USDA and NRCS.





TRACT 2  
TOPOGRAPHY



963 ft 1020 ft



Center: 42.373638, -91.081681

04-87N-2W

Cascade Township

Dubuque County, IA

Source: USGS 10m DEM

Interval(ft): 3

Max: 1020.0 ft

Min: 963.0 ft

Range: 57.0 ft

Average: 991.5 ft

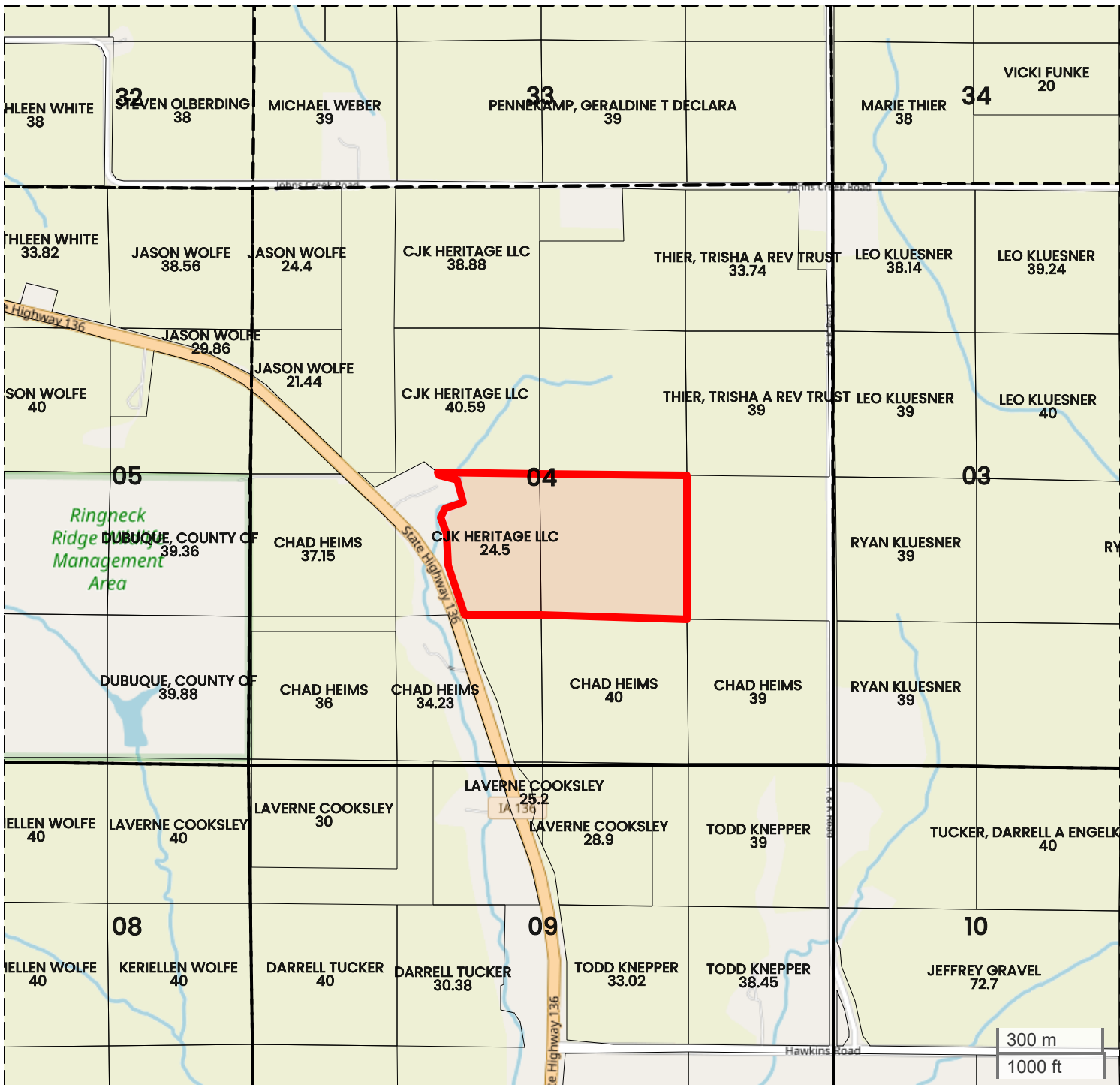


FarmWorth, LLC makes no representations or warranties, express or implied, as to the accuracy of any information, data, numerical values, boundaries, or any other information generated through the use of FarmWorth.com. User is solely responsible for independently investigating and determining all information provided through FarmWorth.com prior to use and waives any and all claims against FarmWorth, LLC for any inaccuracies or inconsistencies in the information and/or data.





TRACT 2  
PLAT MAP



Center: 42.373630, -91.081671

04-87N-2W

Cascade Township

Dubuque County, IA



FarmWorth, LLC makes no representations or warranties, express or implied, as to the accuracy of any information, data, numerical values, boundaries, or any other information generated through the use of FarmWorth.com. User is solely responsible for independently investigating and determining all information provided through FarmWorth.com prior to use and waives any and all claims against FarmWorth, LLC for any inaccuracies or inconsistencies in the information and/or data.