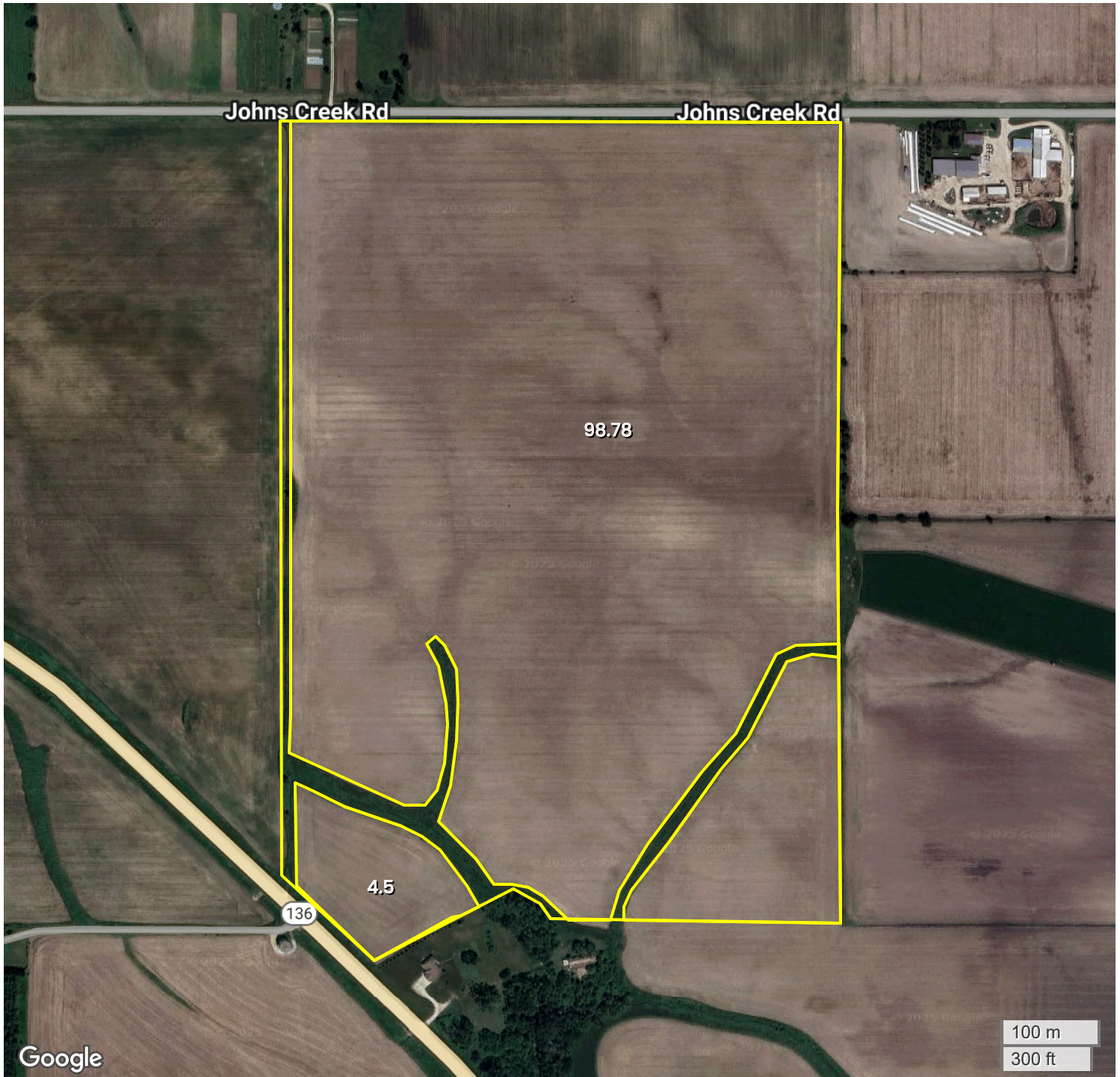




TRACT 1
AERIAL MAP



Center: 42.378852, -91.085763

04-87N-2W

Cascade Township

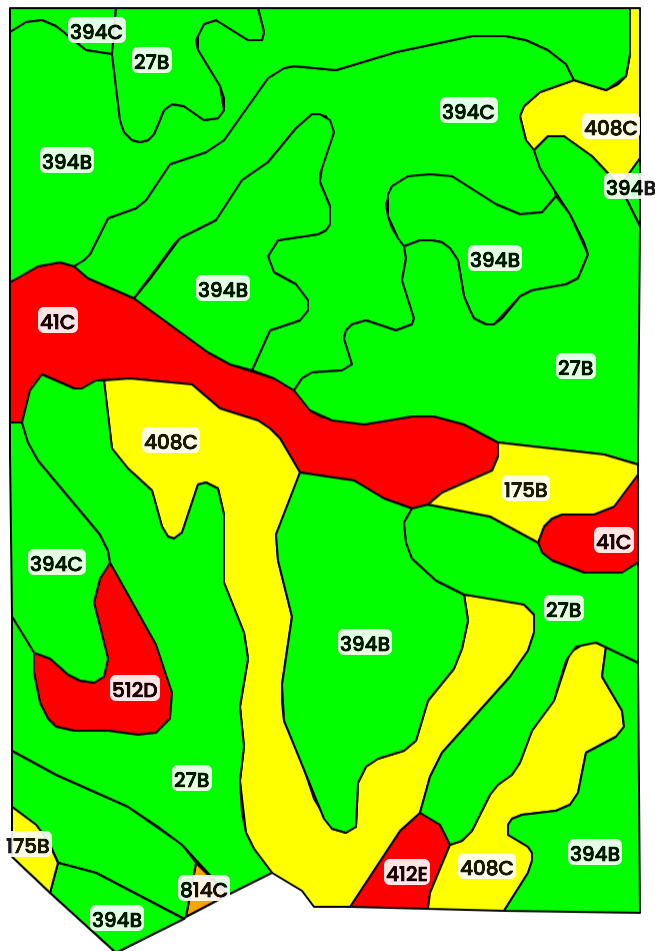
Dubuque County, IA



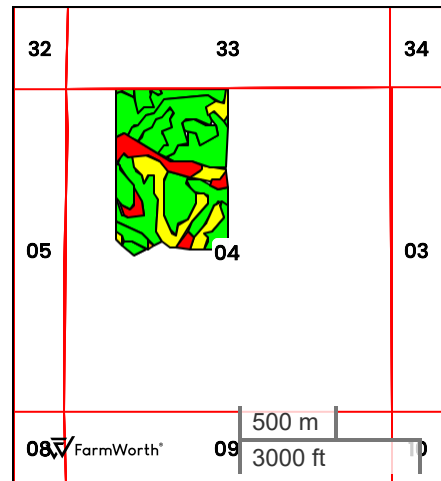
FarmWorth, LLC makes no representations or warranties, express or implied, as to the accuracy of any information, data, numerical values, boundaries, or any other information generated through the use of FarmWorth.com. User is solely responsible for independently investigating and determining all information provided through FarmWorth.com prior to use and waives any and all claims against FarmWorth, LLC for any inaccuracies or inconsistencies in the information and/or data.



TRACT 1 TOTAL SOILS



FarmWorth®



County: **Dubuque County, IA**
Location: **04-87N-2W**
Township: **Cascade**
Acres: **108.61**
Date: **12/15/2025**



Field borders obtained from Farm Service Agency
as of 2008

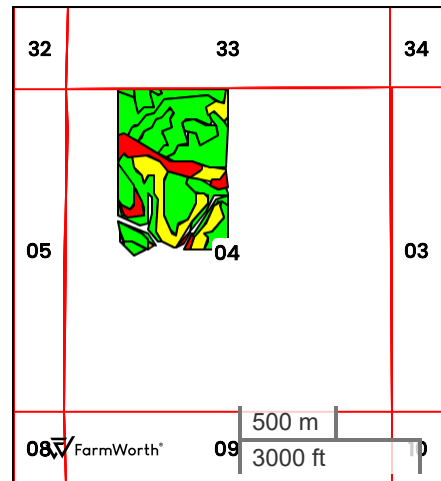
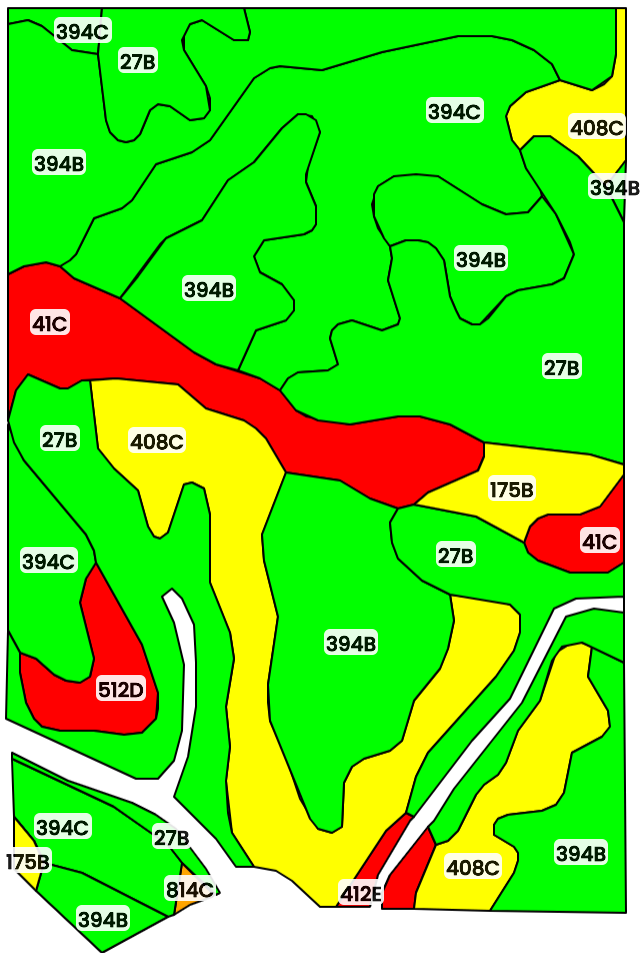
FarmWorth, LLC makes no representations or warranties, express or implied, as to the accuracy of any information, data, numerical values, boundaries, or any other information generated through the use of FarmWorth.com. User is solely responsible for independently investigating and determining all information provided through FarmWorth.com prior to use and waives any and all claims against FarmWorth, LLC for any inaccuracies or inconsistencies in the information and/or data.

Code	Description	Acres	% of field	IA CSR2	Drainage Class
394B	Ostrander loam, 2 to 5 percent slopes	30.66	28.23 %	88	Well drained
27B	Terril loam, 2 to 5 percent slopes	28.78	26.50 %	89	Moderately well drained
394C	Ostrander loam, 5 to 9 percent slopes	18.99	17.49 %	83	Well drained
408C	Olin sandy loam, 5 to 9 percent slopes	16.05	14.78 %	59	Well drained
41C	Sparta loamy fine sand, 3 to 9 percent slopes	8.03	7.39 %	32	Excessively drained
175B	Dickinson fine sandy loam, 2 to 5 percent slopes	2.55	2.35 %	51	Somewhat excessively drained
512D	Marlean sandy loam, 5 to 14 percent slopes	2.31	2.13 %	30	Well drained
412E	Emeline loam, 9 to 18 percent slopes	1.03	0.95 %	5	Somewhat excessively drained
814C	Rockton loam, 5 to 9 percent slopes	0.20	0.18 %	42	Well drained
Average:				76.0	

IA has updated the CSR values for each county to CSR2.
Soils data provided by USDA and NRCS.



TRACT 1 TILLABLE SOILS



County: **Dubuque County, IA**
Location: **04-87N-2W**
Township: **Cascade**
Acres: **103.28**
Date: **12/15/2025**



Field borders obtained from Farm Service Agency
as of 2008

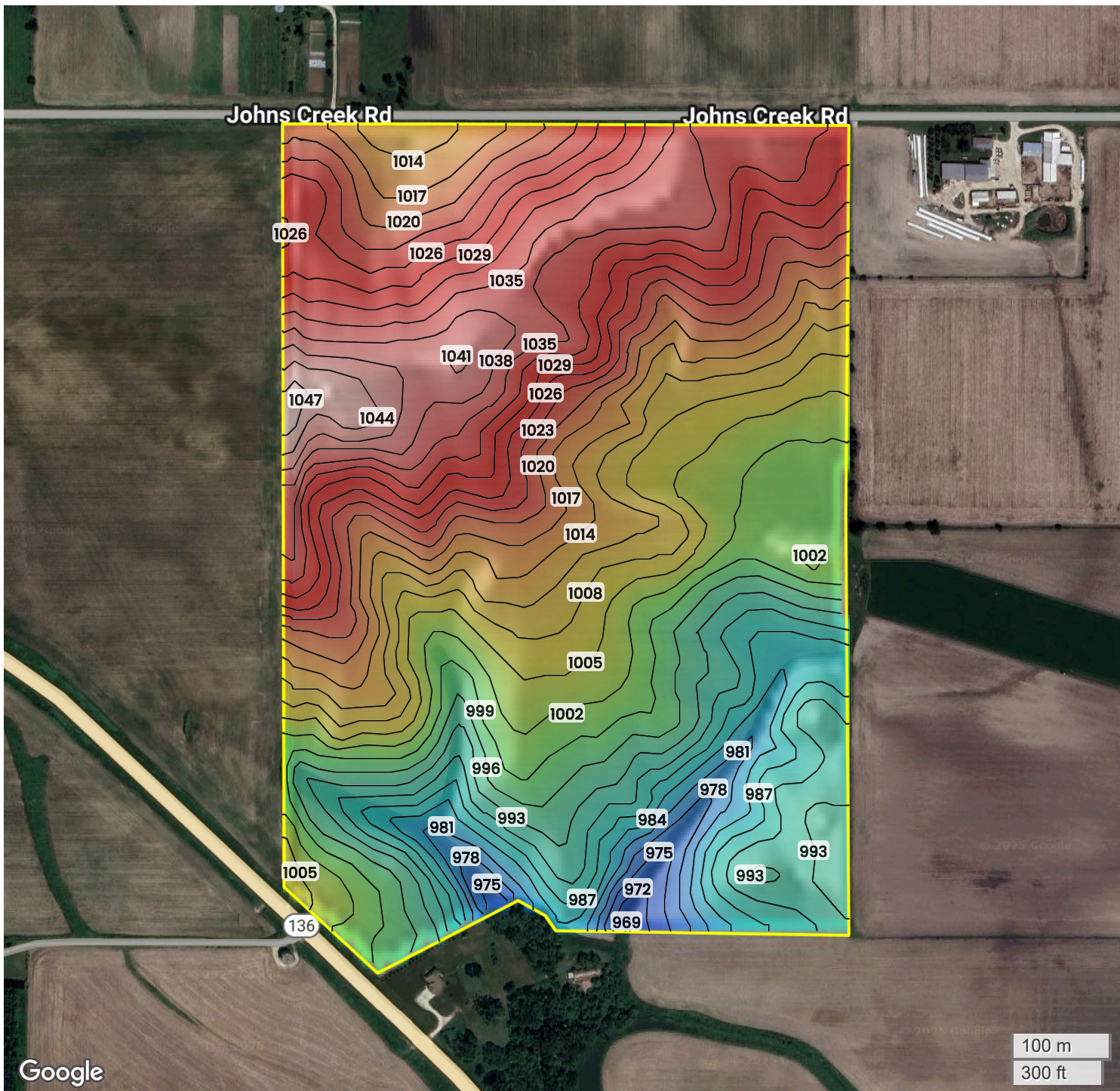
FarmWorth, LLC makes no representations or warranties, express or implied, as to the accuracy of any information, data, numerical values, boundaries, or any other information generated through the use of FarmWorth.com. User is solely responsible for independently investigating and determining all information provided through FarmWorth.com prior to use and waives any and all claims against FarmWorth, LLC for any inaccuracies or inconsistencies in the information and/or data.

Code		Description	Acres	% of field	IA CSR2	Drainage Class
394B		Ostrander loam, 2 to 5 percent slopes	30.09	29.13 %	88	Well drained
27B		Terril loam, 2 to 5 percent slopes	25.57	24.76 %	89	Moderately well drained
394C		Ostrander loam, 5 to 9 percent slopes	18.34	17.76 %	83	Well drained
408C		Olin sandy loam, 5 to 9 percent slopes	15.90	15.40 %	59	Well drained
41C		Sparta loamy fine sand, 3 to 9 percent slopes	7.72	7.47 %	32	Excessively drained
175B		Dickinson fine sandy loam, 2 to 5 percent slopes	2.38	2.30 %	51	Somewhat excessively drained
512D		Marlean sandy loam, 5 to 14 percent slopes	2.31	2.24 %	30	Well drained
412E		Emeline loam, 9 to 18 percent slopes	0.78	0.76 %	5	Somewhat excessively drained
814C		Rockton loam, 5 to 9 percent slopes	0.19	0.18 %	42	Well drained
				Average:	75.8	

IA has updated the CSR values for each county to CSR2.
Soils data provided by USDA and NRCS.



TRACT 1
TOPOGRAPHY



969 ft 1047 ft



Center: 42.378853, -91.085810

04-87N-2W

Cascade Township
Dubuque County, IA

Source: USGS 10m DEM
Interval(ft): 3
Max: 1047.0 ft
Min: 969.0 ft
Range: 78.0 ft
Average: 1008.0 ft

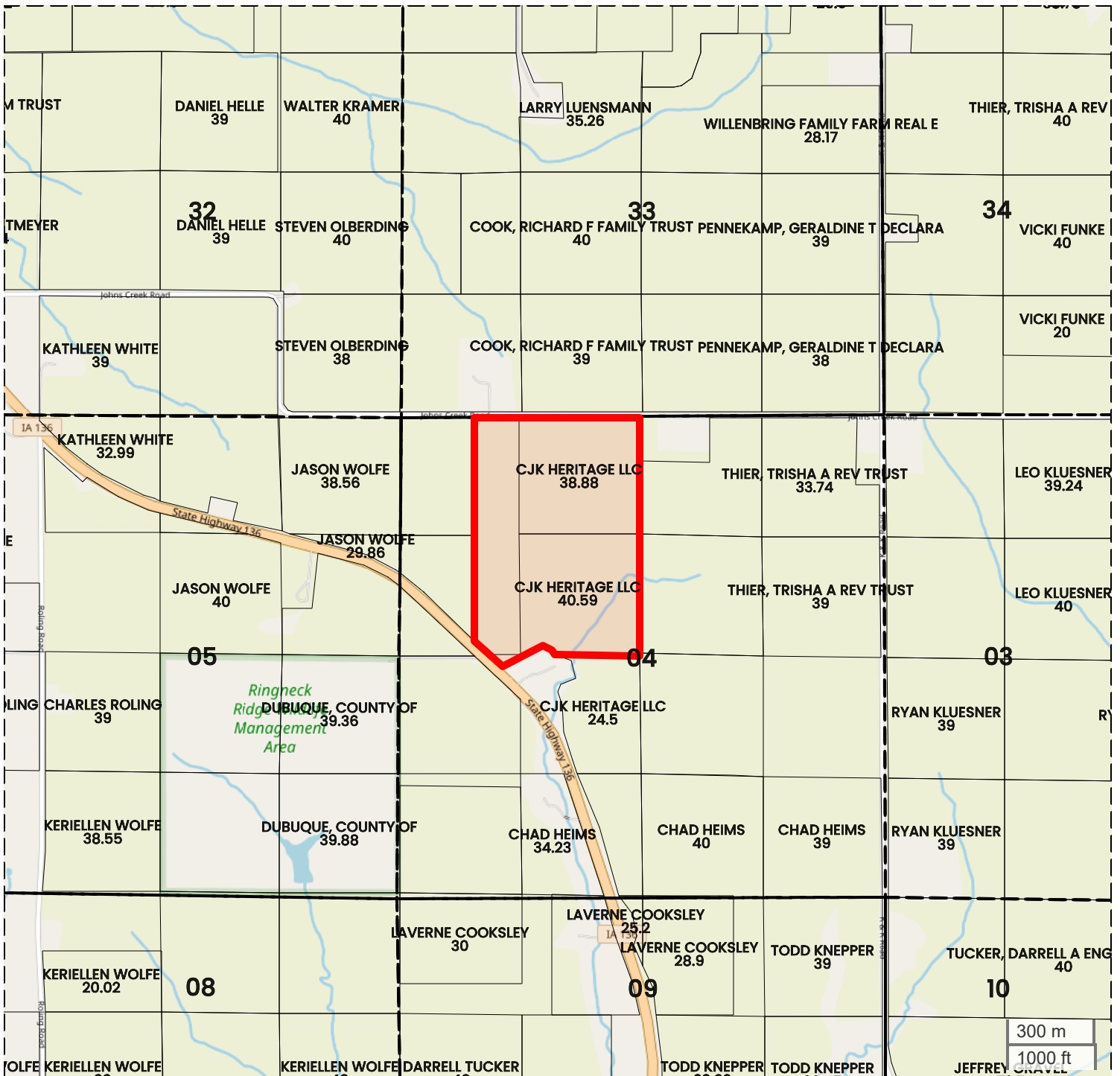


FarmWorth, LLC makes no representations or warranties, express or implied, as to the accuracy of any information, data, numerical values, boundaries, or any other information generated through the use of FarmWorth.com. User is solely responsible for independently investigating and determining all information provided through FarmWorth.com prior to use and waives any and all claims against FarmWorth, LLC for any inaccuracies or inconsistencies in the information and/or data.





TRACT 1
PLAT MAP



Center: 42.378870, -91.085795

04-87N-2W

Cascade Township

Dubuque County, IA



FarmWorth, LLC makes no representations or warranties, express or implied, as to the accuracy of any information, data, numerical values, boundaries, or any other information generated through the use of FarmWorth.com. User is solely responsible for independently investigating and determining all information provided through FarmWorth.com prior to use and waives any and all claims against FarmWorth, LLC for any inaccuracies or inconsistencies in the information and/or data.