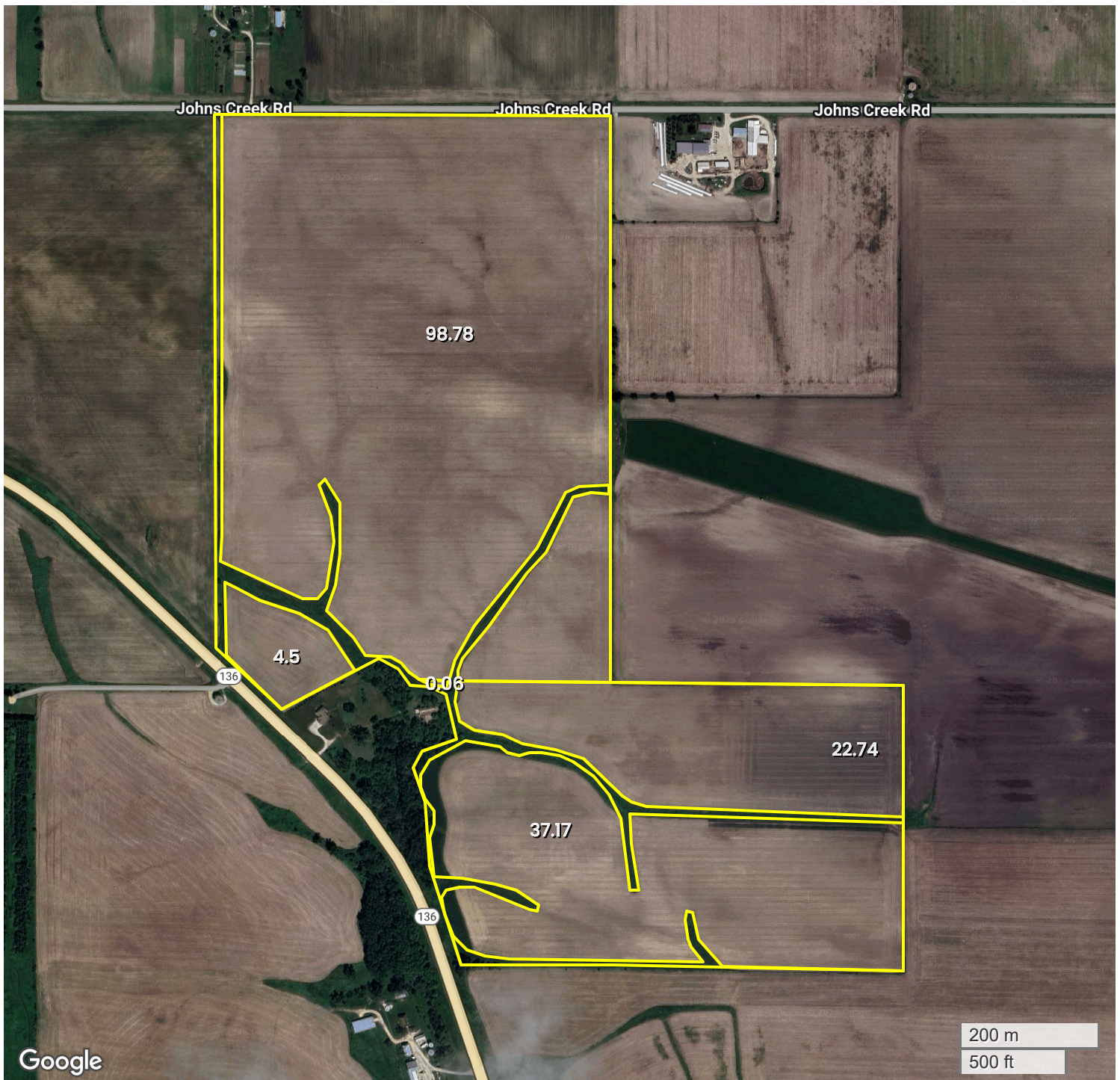




# AERIAL MAP



Center: 42.377194, -91.083253

04-87N-2W

Cascade Township

Dubuque County, IA



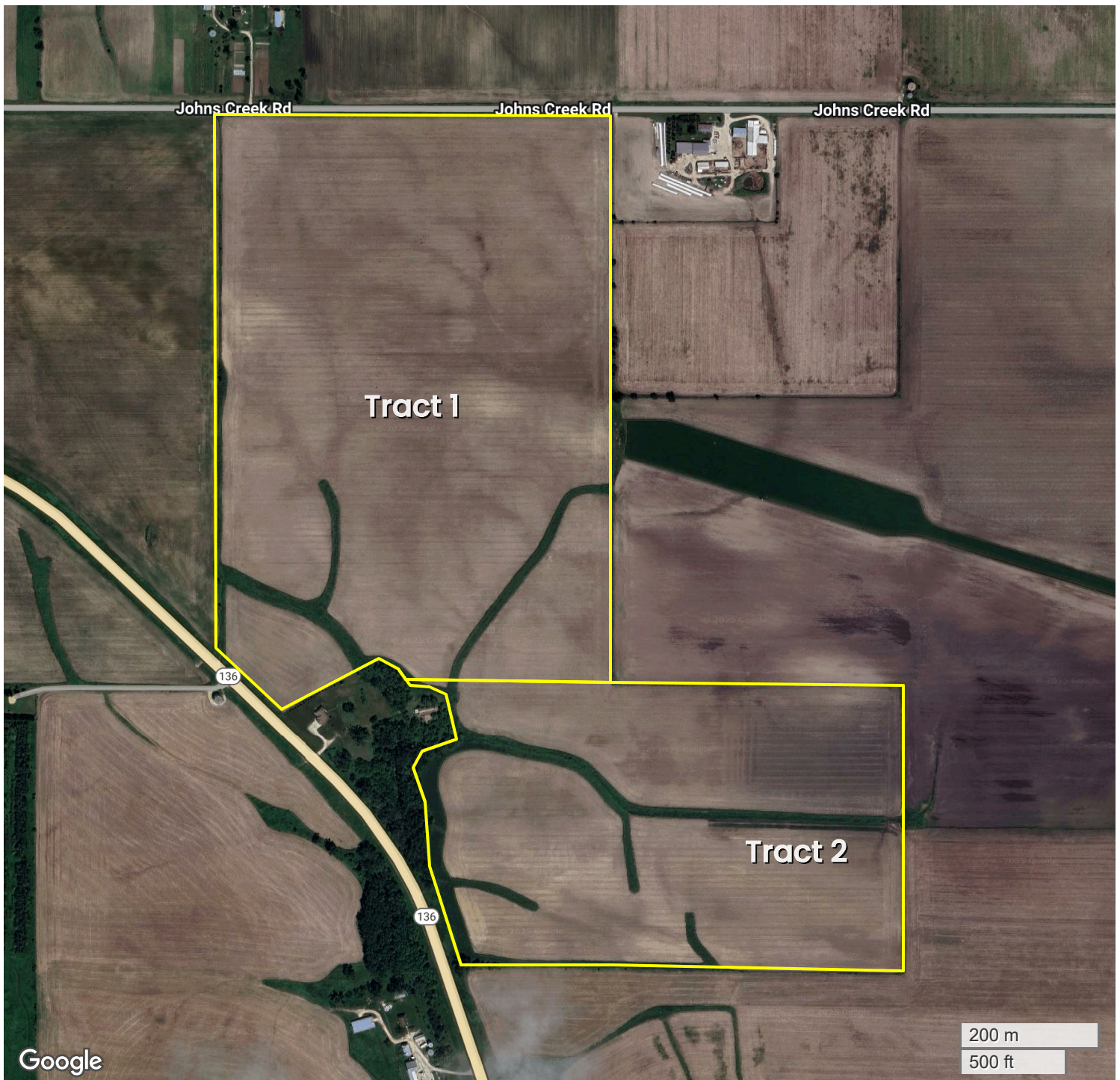
FarmWorth, LLC makes no representations or warranties, express or implied, as to the accuracy of any information, data, numerical values, boundaries, or any other information generated through the use of FarmWorth.com. User is solely responsible for independently investigating and determining all information provided through FarmWorth.com prior to use and waives any and all claims against FarmWorth, LLC for any inaccuracies or inconsistencies in the information and/or data.





CJK HERITAGE FARM | WORTHINGTON

## AERIAL MAP (TRACTS)



Center: 42.377194, -91.083304

04-87N-2W

Cascade Township

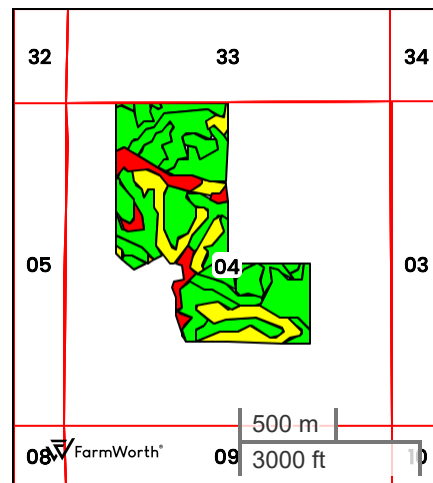
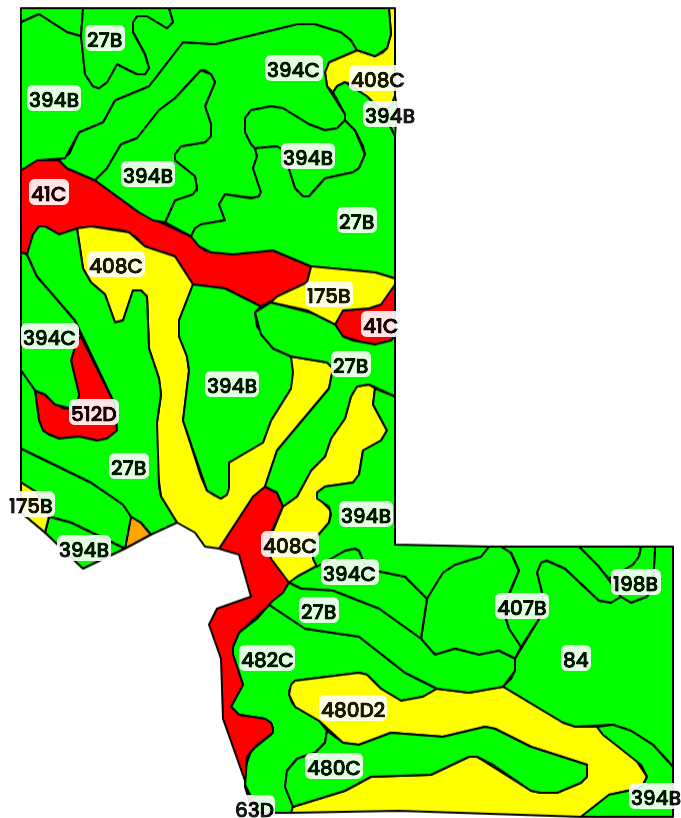
Dubuque County, IA



FarmWorth, LLC makes no representations or warranties, express or implied, as to the accuracy of any information, data, numerical values, boundaries, or any other information generated through the use of FarmWorth.com. User is solely responsible for independently investigating and determining all information provided through FarmWorth.com prior to use and waives any and all claims against FarmWorth, LLC for any inaccuracies or inconsistencies in the information and/or data.



## TOTAL SOILS



County: Dubuque County, IA

Location: 04-87N-2W

Township: Cascade


Acres: 173.14

Date: 12/15/2025

Field borders obtained from Farm Service Agency  
as of 2008

FarmWorth, LLC makes no representations or warranties, express or implied, as to the accuracy of any information, data, numerical values, boundaries, or any other information generated through the use of FarmWorth.com. User is solely responsible for independently investigating and determining all information provided through FarmWorth.com prior to use and waives any and all claims against FarmWorth, LLC for any inaccuracies or inconsistencies in the information and/or data.

Code	Description	Acres	% of field	IA CSR2	Overall NCCPI	Soil Class (Irr)	Soil Class (Non-Irr)	Drainage Class
394B	Ostrander loam, 2 to 5 percent slopes	35.00	20.21 %	88	78	-	2	Well drained
27B	Terril loam, 2 to 5 percent slopes	33.78	19.51 %	89	96	-	2	Moderately well drained
394C	Ostrander loam, 5 to 9 percent slopes	21.60	12.47 %	83	77	-	3	Well drained
408C	Olin sandy loam, 5 to 9 percent slopes	16.82	9.71 %	59	71	-	2	Well drained
480D2	Orwood silt loam, 9 to 14 percent slopes, moderately eroded	13.79	7.96 %	52	80	-	3	Well drained
84	Clyde loam, 0 to 2 percent slopes	11.63	6.72 %	89	84	-	2	Poorly drained
482C	Racine loam, 5 to 9 percent slopes	8.20	4.74 %	75	94	-	3	Well drained
41C	Sparta loamy fine sand, 3 to 9 percent slopes	8.03	4.64 %	32	43	-	4	Excessively drained
480C	Orwood silt loam, 5 to 9 percent slopes	6.45	3.73 %	81	90	-	3	Well drained
412E	Emeline loam, 9 to 18 percent slopes	4.50	2.60 %	5	25	-	6	Somewhat excessively drained
482B	Racine loam, 2 to 5 percent slopes	4.22	2.44 %	76	63	-	2	Well drained
175B	Dickinson fine sandy loam, 2 to 5 percent slopes	2.55	1.47 %	51	54	-	2	Somewhat excessively drained
407B	Schley loam, 1 to 4 percent slopes	2.54	1.47 %	81	94	-	2	Somewhat poorly drained
512D	Marlean sandy loam, 5 to 14 percent slopes	2.31	1.33 %	30	57	-	6	Well drained
198B	Floyd loam, 1 to 4 percent slopes	0.84	0.49 %	89	88	-	2	Somewhat poorly drained
83B	Kenyon loam, 2 to 5 percent slopes	0.65	0.38 %	90	89	-	2	Moderately well drained
814C	Rockton loam, 5 to 9 percent slopes	0.20	0.12 %	42	65	-	3	Well drained

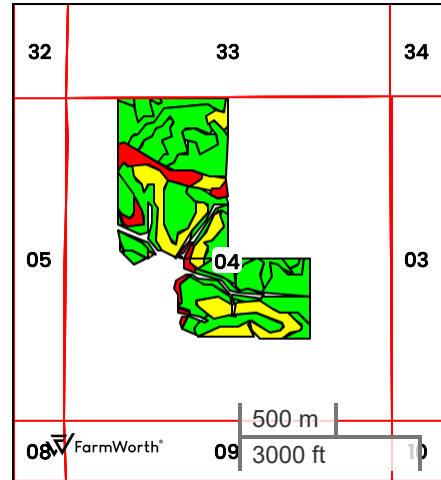
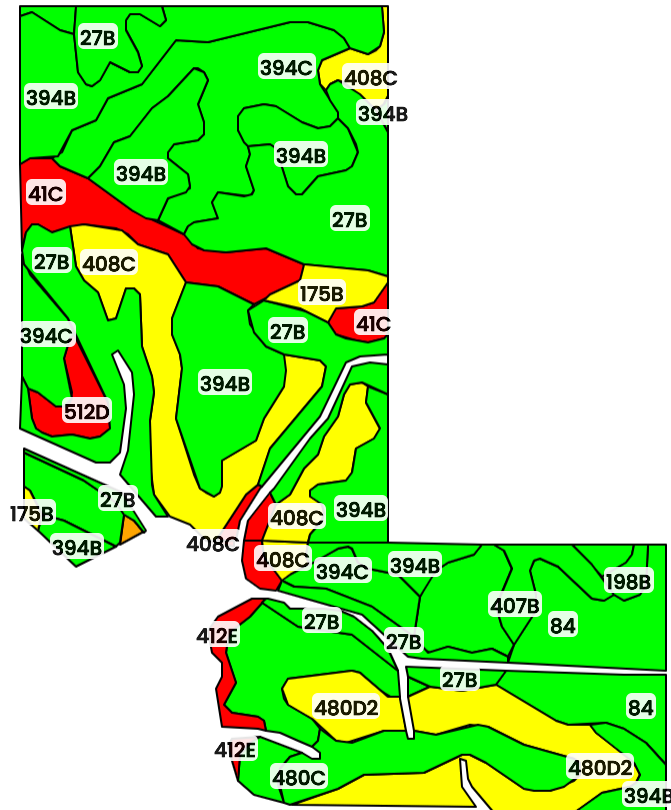
Code	Description	Acres	% of field	IA CSR2	Overall NCCPI	Soil Class (Irr)	Soil Class (Non-Irr)	Drainage Class
63D	 Chelsea loamy fine sand, 9 to 14 percent slopes	0.04	0.02 %	5	48	-	6	Excessively drained
Average:				74.5	78.8			

IA has updated the CSR values for each county to CSR2.  
Soils data provided by USDA and NRCS.





## TILLABLE SOILS



County: Dubuque County, IA

Location: 04-87N-2W

Township: Cascade

Acres: 163.25

Date: 12/15/2025

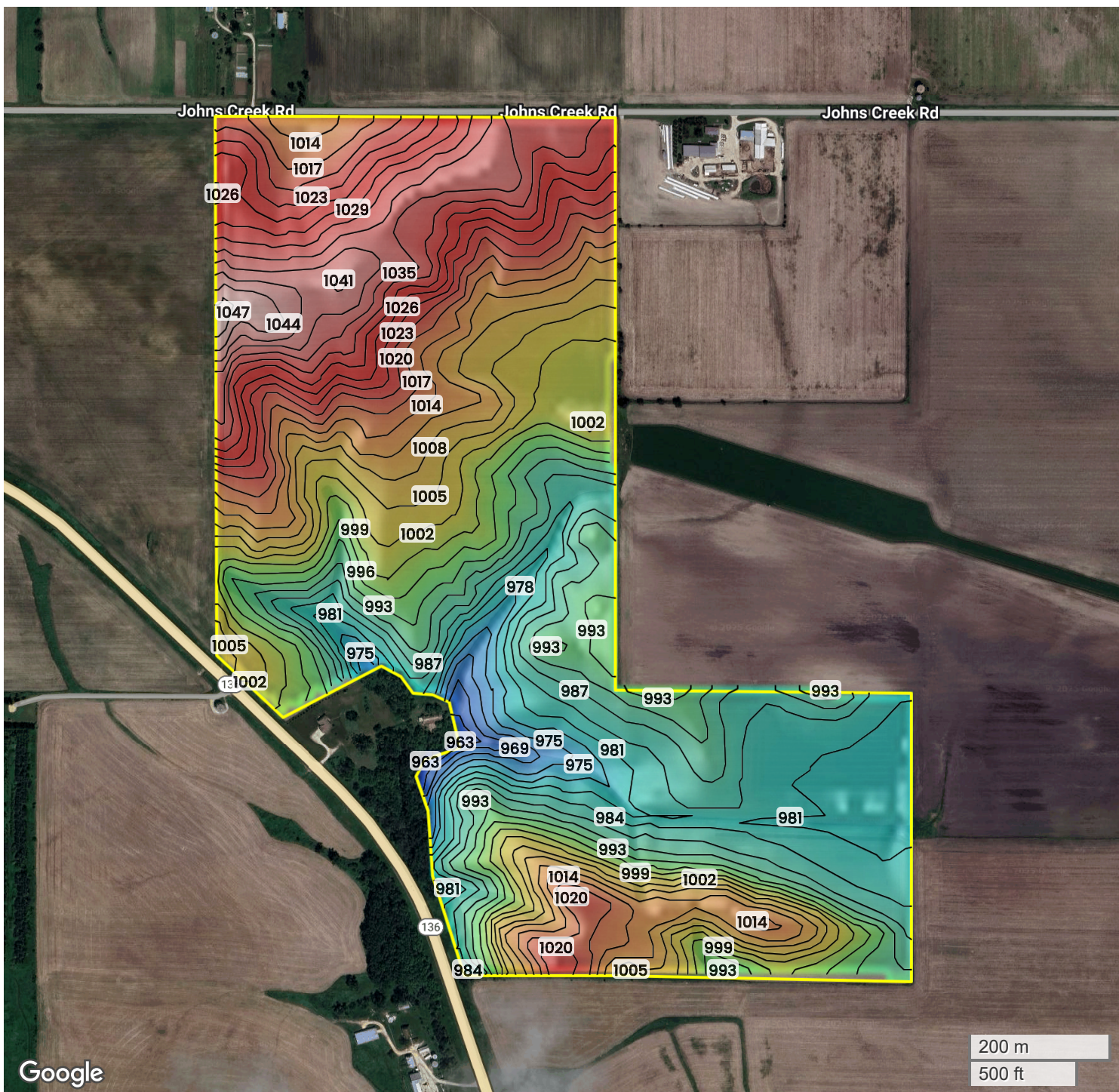
Field borders obtained from Farm Service Agency  
as of 2008

FarmWorth, LLC makes no representations or warranties, express or implied, as to the accuracy of any information, data, numerical values, boundaries, or any other information generated through the use of FarmWorth.com. User is solely responsible for independently investigating and determining all information provided through FarmWorth.com prior to use and waives any and all claims against FarmWorth, LLC for any inaccuracies or inconsistencies in the information and/or data.

Code	Description	Acres	% of field	IA CSR2	Drainage Class
394B	Ostrander loam, 2 to 5 percent slopes	34.39	21.06 %	88	Well drained
27B	Terril loam, 2 to 5 percent slopes	29.42	18.02 %	89	Moderately well drained
394C	Ostrander loam, 5 to 9 percent slopes	20.95	12.83 %	83	Well drained
408C	Olin sandy loam, 5 to 9 percent slopes	16.62	10.18 %	59	Well drained
480D2	Orwood silt loam, 9 to 14 percent slopes, moderately eroded	12.87	7.88 %	52	Well drained
84	Clyde loam, 0 to 2 percent slopes	11.07	6.78 %	89	Poorly drained
41C	Sparta loamy fine sand, 3 to 9 percent slopes	7.72	4.73 %	32	Excessively drained
482C	Racine loam, 5 to 9 percent slopes	7.63	4.67 %	75	Well drained
480C	Orwood silt loam, 5 to 9 percent slopes	6.35	3.89 %	81	Well drained
482B	Racine loam, 2 to 5 percent slopes	4.22	2.58 %	76	Well drained
412E	Emeline loam, 9 to 18 percent slopes	3.11	1.90 %	5	Somewhat excessively drained
407B	Schley loam, 1 to 4 percent slopes	2.54	1.56 %	81	Somewhat poorly drained
175B	Dickinson fine sandy loam, 2 to 5 percent slopes	2.38	1.46 %	51	Somewhat excessively drained
512D	Marlean sandy loam, 5 to 14 percent slopes	2.31	1.41 %	30	Well drained
198B	Floyd loam, 1 to 4 percent slopes	0.84	0.51 %	89	Somewhat poorly drained
83B	Kenyon loam, 2 to 5 percent slopes	0.65	0.40 %	90	Moderately well drained
814C	Rockton loam, 5 to 9 percent slopes	0.19	0.12 %	42	Well drained
Average:				74.9	



# TOPOGRAPHY



963 ft

1047 ft



Center: 42.377200, -91.083315

04-87N-2W

Cascade Township

Dubuque County, IA

Source: USGS 10m DEM

Interval(ft): 3

Max: 1047.0 ft

Min: 963.0 ft

Range: 84.0 ft

Average: 1005.0 ft



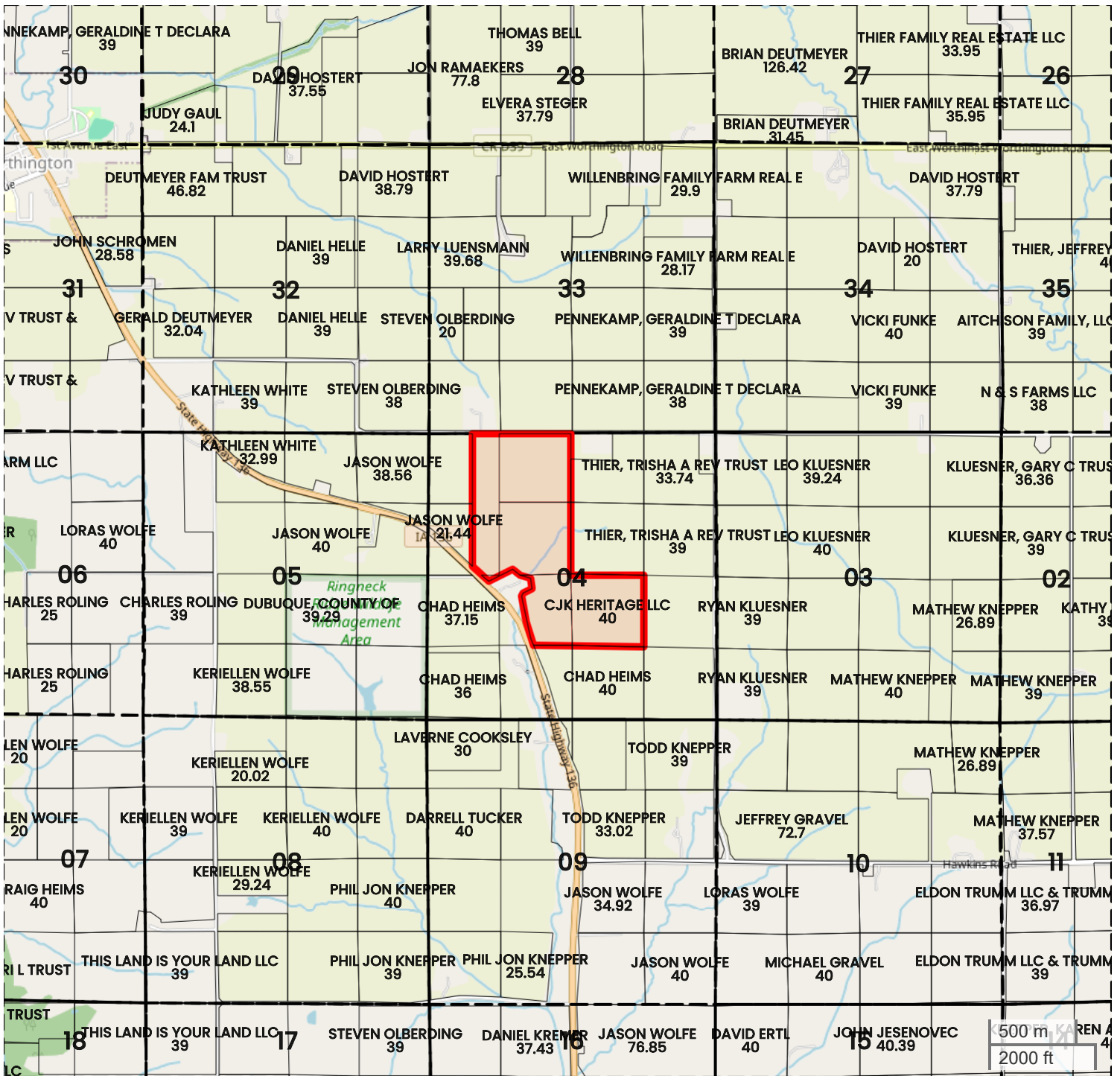
FarmWorth, LLC makes no representations or warranties, express or implied, as to the accuracy of any information, data, numerical values, boundaries, or any other information generated through the use of FarmWorth.com. User is solely responsible for independently investigating and determining all information provided through FarmWorth.com prior to use and waives any and all claims against FarmWorth, LLC for any inaccuracies or inconsistencies in the information and/or data.







# PLAT MAP



Center: 42.377170, -91.083355

04-87N-2W

Cascade Township

Dubuque County, IA



FarmWorth, LLC makes no representations or warranties, express or implied, as to the accuracy of any information, data, numerical values, boundaries, or any other information generated through the use of FarmWorth.com. User is solely responsible for independently investigating and determining all information provided through FarmWorth.com prior to use and waives any and all claims against FarmWorth, LLC for any inaccuracies or inconsistencies in the information and/or data.