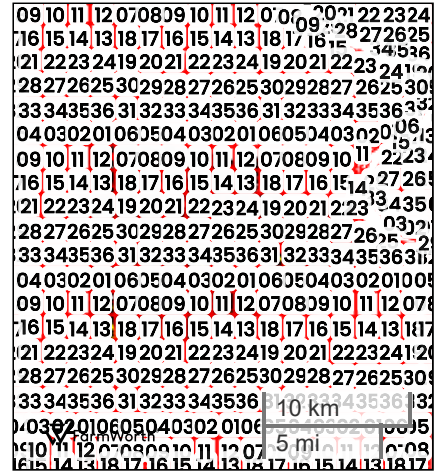
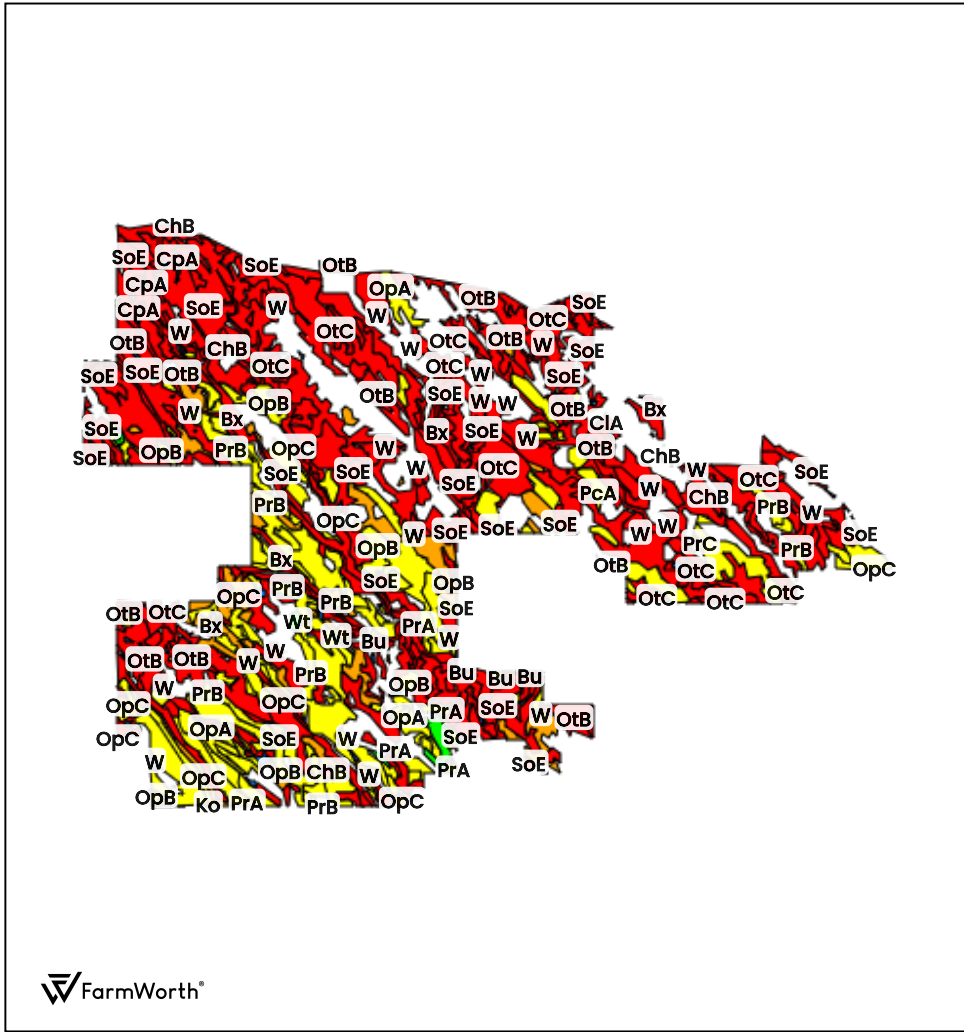




GUNSMOKE FARM (33960.23 AC TOTAL, 29875.53 AC TILLABLE)

TOTAL SOILS



County: Stanley County, SD
 Location: 27-6N-28E
 Township: North Stanley UT
 Acres: 33960.23
 Date: 04/22/2026



FarmWorth, LLC makes no warranties, express or implied, regarding the accuracy of any information provided through FarmWorth.com. User is solely responsible for independently verifying all information prior to use and waives any claims against FarmWorth, LLC arising from inaccuracies in such information.

Code	Description	Acres	% of field	CPI	Overall NCCPI	Soil Class (Irr)	Soil Class (Non-Irr)	Drainage Class
SoE	Sansarc-Opal clays, 9 to 25 percent slopes	10176.81	29.97 %	20	19	7	7	Well drained
OtB	Opal-Chantier clays, 2 to 6 percent slopes	4208.97	12.39 %	38	23	-	3	Well drained
OtC	Opal-Chantier clays, 6 to 9 percent slopes	3623.20	10.67 %	33	22	-	4	Well drained
PrB	Promise clay, 3 to 6 percent slopes	2851.47	8.40 %	62	22	3	3	Well drained
OpC	Opal clay, 6 to 9 percent slopes	2425.52	7.14 %	47	26	4	4	Well drained
OpB	Opal clay, 3 to 6 percent slopes	2279.84	6.71 %	57	26	3	3	Well drained
PrA	Promise clay, 0 to 3 percent slopes	2205.46	6.49 %	65	22	3	3	Well drained
ChB	Chantier clay, 2 to 9 percent slopes	1724.98	5.08 %	9	16	6	6	Well drained
Bx	Bullcreek-Slickspots complex, 0 to 6 percent slopes	1501.07	4.42 %	11	14	6	6	Well drained
OpA	Opal clay, 0 to 3 percent slopes	561.51	1.65 %	65	25	3	3	Well drained
Wd	Wendte clay, channeled, occasionally flooded	484.43	1.43 %	32	20	6	6	Moderately well drained
Bu	Bullcreek clay, 0 to 6 percent slopes	379.51	1.12 %	11	22	6	6	Well drained
PrC	Promise clay, 6 to 9 percent slopes	349.04	1.03 %	53	21	4	4	Well drained
CpA	Capa silt loam, 0 to 6 percent slopes	330.00	0.97 %	10	27	6	6	Moderately well drained
W	Water	310.44	0.91 %	0	0	-	8	-
PcA	Promise-Capa complex, 0 to 3 percent slopes	217.45	0.64 %	51	23	3	3	Well drained
Wt	Witten silty clay, 0 to 3 percent slopes	216.52	0.64 %	77	36	2	2	Moderately well drained
CsD	Chantier-Sansarc clays, 3 to 15 percent slopes	67.44	0.20 %	9	16	6	6	Well drained

Code	Description	Acres	% of field	CPI	Overall NCCPI	Soil Class (Irr)	Soil Class (Non-Irr)	Drainage Class
CIA	Capa-Slickspots complex, 0 to 3 percent slopes	27.12	0.08 %	12	16	6	6	Moderately well drained
Ko	Kolls clay	19.45	0.06 %	29	4	5	5	Poorly drained
Average:				34.9	21.0			

Crop Productivity Index tables for ND and SD are obtained from SSURGO using weighted average of all components within the soil profile
Soils data provided by USDA and NRCS.