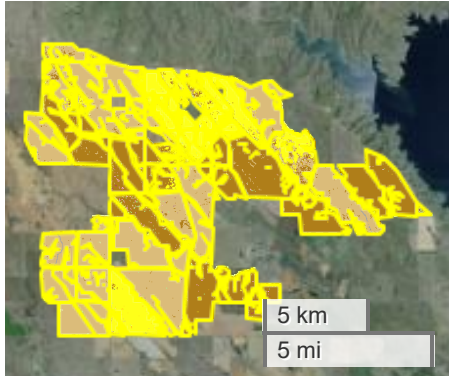




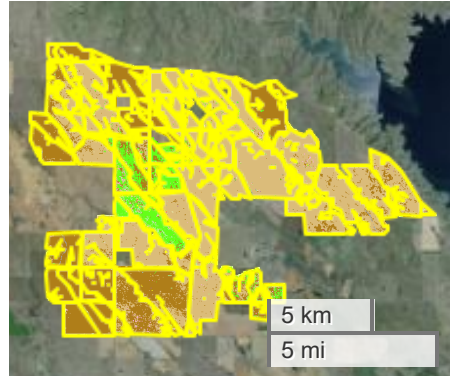
GUNSMOKE FARM (33960.23 AC TOTAL, 29875.53 AC TILLABLE)

CROP HISTORY

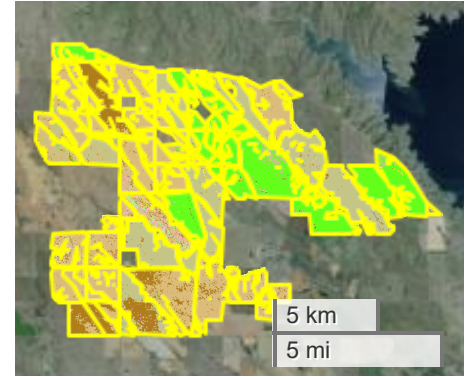
2023



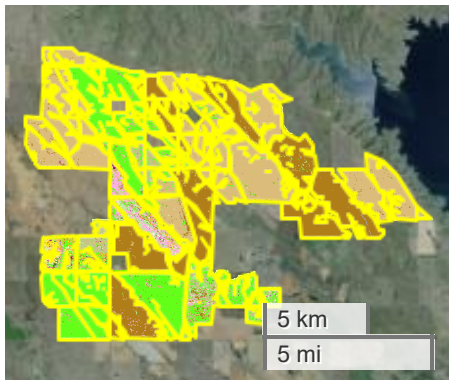
2022



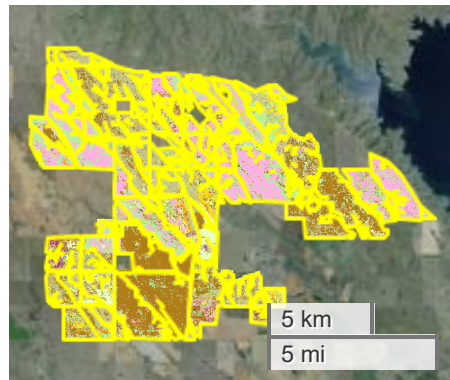
2021



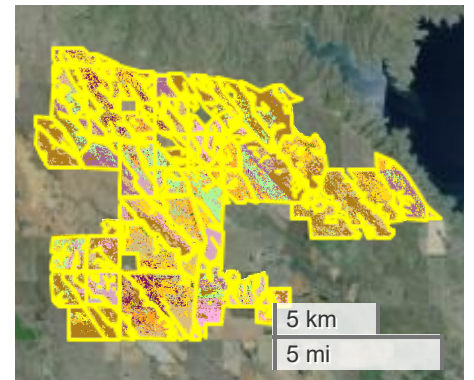
2020



2019



2018



Crop History

		Percent Area (>0.5 %)						
	Crop	2023	2022	2021	2020	2019	2018	Average
	Spring Wheat	45.8	54.9	38.2	32.9	0.3	15.2	31.2
	Winter Wheat	35.4	33.2	11.3	28.2	28.8	26.2	27.2
	Peas	0.0	7.5	21.0	26.2	0.0	0.0	10.9
	Fallow/Idle Cropland	0.0	0.0	24.6	3.7	23.8	3.7	9.3
	Buckwheat	0.0	0.0	0.0	0.0	0.0	5.4	5.4
	Alfalfa	0.4	0.8	1.2	2.4	19.9	6.2	5.1
	Other Hay/Non Alfalfa	0.5	0.7	0.8	1.4	13.9	9.9	4.5
	Sunflower	14.9	0.2	0.1	0.2	0.9	3.1	3.2
	Grass/Pasture	1.4	1.4	1.4	2.0	6.4	1.5	2.3
	Corn	0.2	0.1	0.1	0.3	2.7	10.1	2.2
	Sorghum	0.1	0.0	0.0	0.7	0.7	6.9	1.4
	Oats	0.0	0.0	0.1	0.3	0.5	7.2	1.4



FarmWorth, LLC makes no warranties, express or implied, regarding the accuracy of any information provided through FarmWorth.com. User is solely responsible for independently verifying all information prior to use and waives any claims against FarmWorth, LLC arising from inaccuracies in such information.