

Dawson County, NE

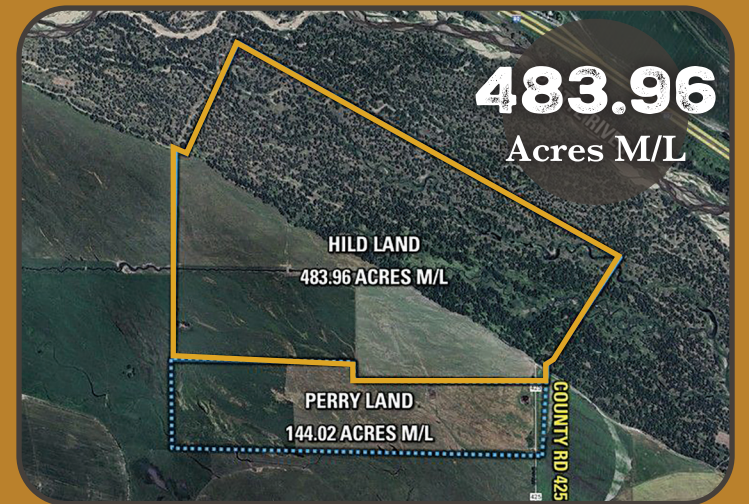
Land Available

Listing 18191 | Asking Price \$2,400,000

Premier 483.97 Acre m/l Recreational & Hunting Property with Additional 144.02 Acres Available – Dawson County, NE.

Peoples Company is pleased to present 483.97 acres m/l of exceptional recreational, hunting, and income-producing land located just west of Lexington, Nebraska, in Dawson County. This diverse property offers over a mile of creek tributaries leading to the Platte River, creating a wildlife haven with prime hunting and outdoor recreational opportunities.

For buyers seeking additional land, an adjacent 144.02 acres of pasture and grassland is also available for purchase, bringing the total to 627.98 acres m/l.



Prime Hunting & Recreational Opportunities

This property is an outdoorsman's paradise, featuring a diverse landscape of dense timber, open meadows, rolling terrain, and water sources. The established wildlife corridors and creek tributaries attract trophy-class whitetail deer, turkey, waterfowl, and upland game birds. The Platte River ecosystem and nearby wetlands create the perfect conditions for duck and goose hunting, while the mix of timber and pasture provides excellent deer and turkey habitat.

In addition to hunting, this property is ideal for ATV riding, horseback riding, hiking, and nature exploration. The expansive acreage ensures privacy and seclusion, making it a perfect retreat for outdoor enthusiasts.

Adjacent to Darr Strip Wildlife Management Area

The property borders the Darr Strip Wildlife Management Area, further enhancing its recreational appeal. With direct access to public hunting and conservation land, wildlife populations are abundant and well-maintained in this region.

Income-Producing Pasture & Grassland

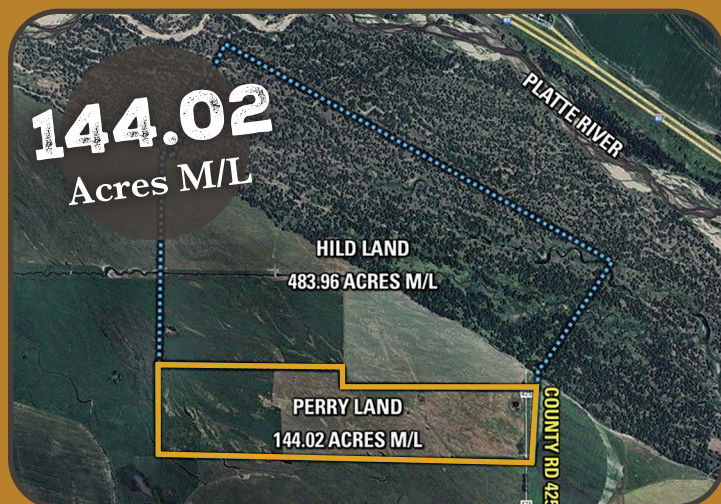
In addition to its recreational appeal, this property offers high-quality pasture ground, perfect for livestock grazing or leasing to local ranchers for additional income. With the option to purchase the adjacent 144.02 acres of pasture and grassland, buyers have the opportunity to expand grazing operations or maintain the land as a long-term investment.

Proximity to Johnson Lake & Area Attractions

Located just a short drive from Johnson Lake, this property provides easy access to boating, fishing, camping, and water sports. Johnson Lake is one of Nebraska's most popular recreational lakes, featuring boat ramps, marinas, fishing piers, and camping areas—making it an excellent complement to this already exceptional hunting and recreational property.

Convenient Location

- West of Lexington, NE – Close to amenities, dining, and shopping
- Easy access to I-80 – Convenient travel from Omaha, Lincoln, or Denver
- Near Johnson Lake – A top-tier recreational destination
- Adjacent to Darr Strip WMA – Expanding your hunting access



Listing 18193 | Asking Price \$395,000

Peoples Company is pleased to present 144.02 acres m/l of productive pasture and grassland located in Dawson County, Nebraska, just west of Lexington. This well-maintained property offers an excellent opportunity for cattle grazing, hay production, and investment potential. Whether you're looking to expand your livestock operation, secure additional grazing acres, or invest in quality Nebraska grassland, this property presents a versatile and income-generating opportunity. For buyers seeking more acreage, this property is adjacent to a 483.97-acre premier recreational and hunting property, which can be purchased separately or together, bringing the total to 627.98 acres m/l.

Don't Miss This Incredible Opportunity!

Sean Kelly | 531.250.7800
Sean@PeoplesCompany.com
NE LIC 20230288

Doran Jeff Post | 402.517.7254
Jeff.Post@PeoplesCompany.com
NE LIC 20020422

PC PEOPLES
COMPANY
INTEGRATED LAND SOLUTIONS