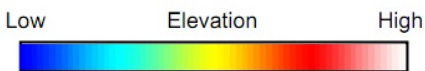
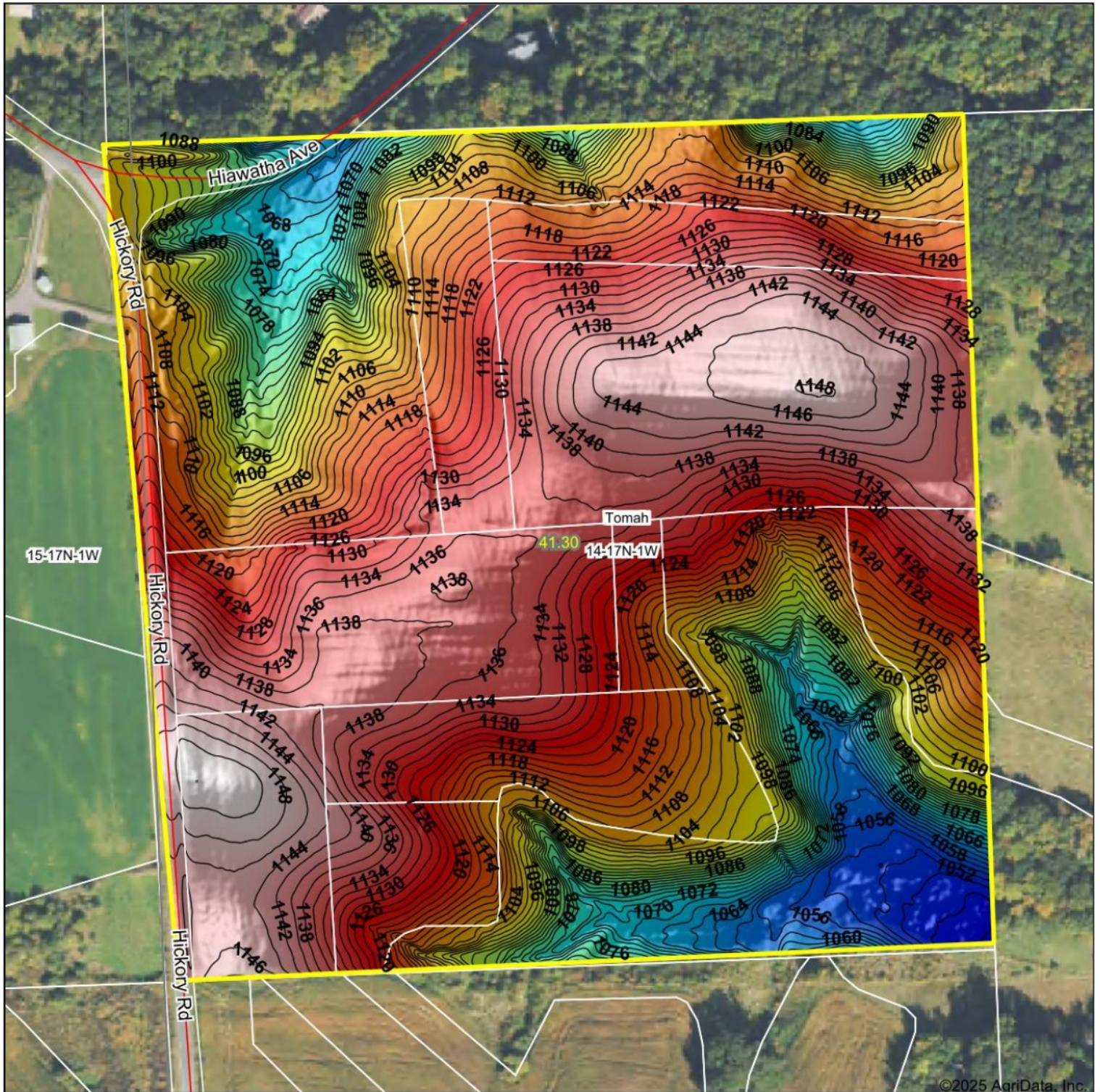


Topography Hillshade



Source: USGS 1 meter dem
Interval(ft): 2
Min: 1,045.7
Max: 1,151.5
Range: 105.8
Average: 1,114.7
Standard Deviation: 25.1 ft



14-17N-1W
Monroe County
Wisconsin

Boundary Center: 43° 57' 8.92, -90° 28' 19.73

Maps Provided By:



© AgriData, Inc. 2023 www.AgriDataInc.com

Field borders provided by Farm Service Agency as of 5/21/2008.