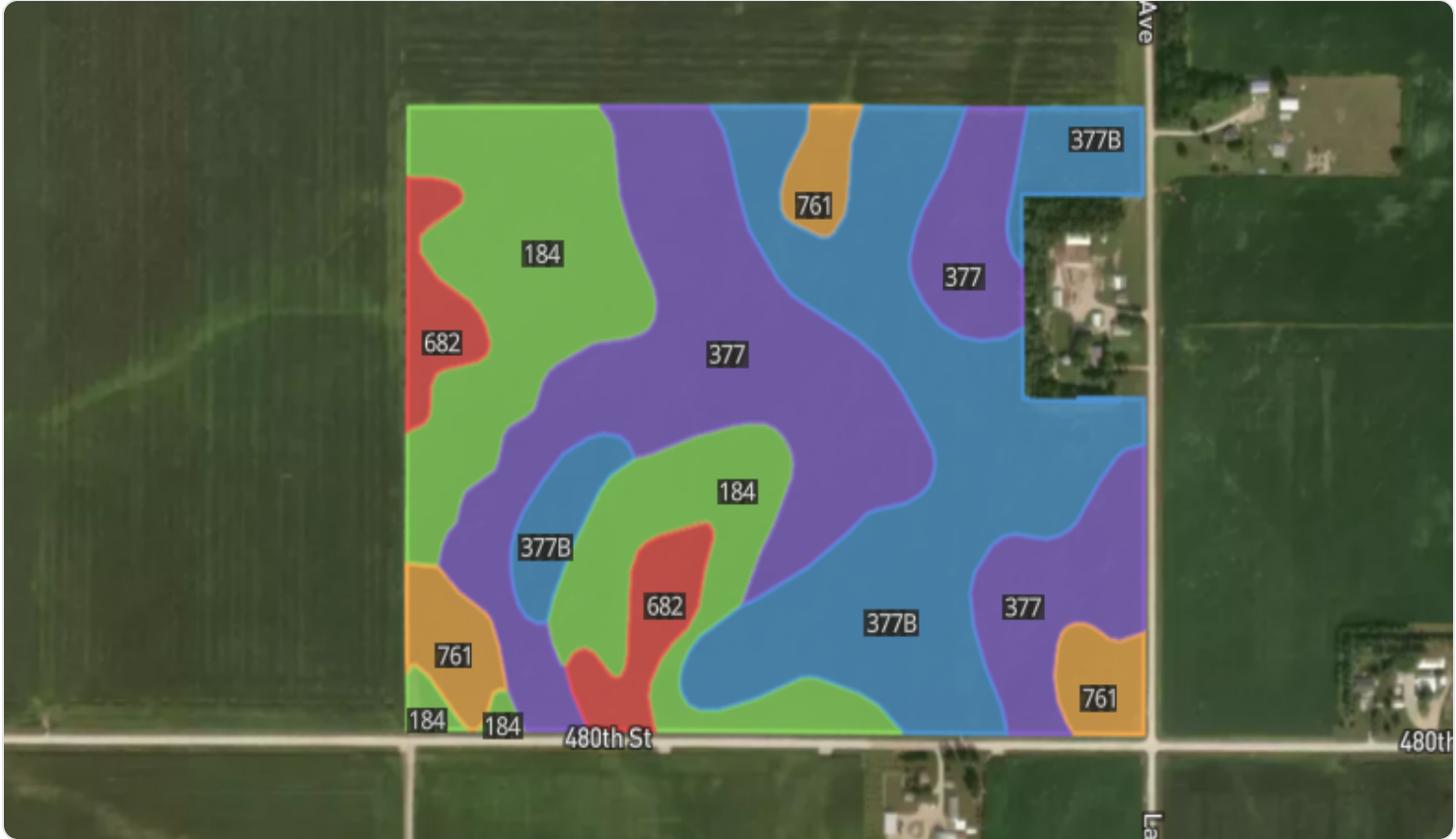


Soil Map






| Soil Code | Soil Description                                | % of Map | Acres  | CSR2 |
|-----------|---|----------|--------|------|
| 377       | Dinsdale silty clay loam, 0 to 2 percent slopes | 33.13%   | 36.96  | 99   |
| 377B      | Dinsdale silty clay loam, 2 to 5 percent slopes | 30.61%   | 34.14  | 94   |
| 184       | Klinger silty clay loam, 1 to 4 percent slopes  | 24.63%   | 27.46  | 95   |
| 761       | Franklin silt loam, 1 to 3 percent slopes       | 6.03%    | 6.72   | 85   |
| 682       | Maxfield silt loam, 0 to 2 percent slopes       | 5.58%    | 6.22   | 83   |
|           | 1 other soil                                    | 0.03%    | 0.03   | 85   |
| Total     |   |          | 111.53 | 95.6 |

All data courtesy SSURGO database distributed by the U.S. NRCS.

Soil Capability Classes Non-Irrigated



| Capability Class  | % of Map | Acres         |
|---|----------|---------------|
|  1  | 63.82%   | 71.17         |
|  2e | 30.61%   | 34.14         |
|  2w | 5.58%    | 6.22          |
| <b>Total</b>  |          | <b>111.53</b> |

All data courtesy SSURGO database distributed by the U.S. NRCS.