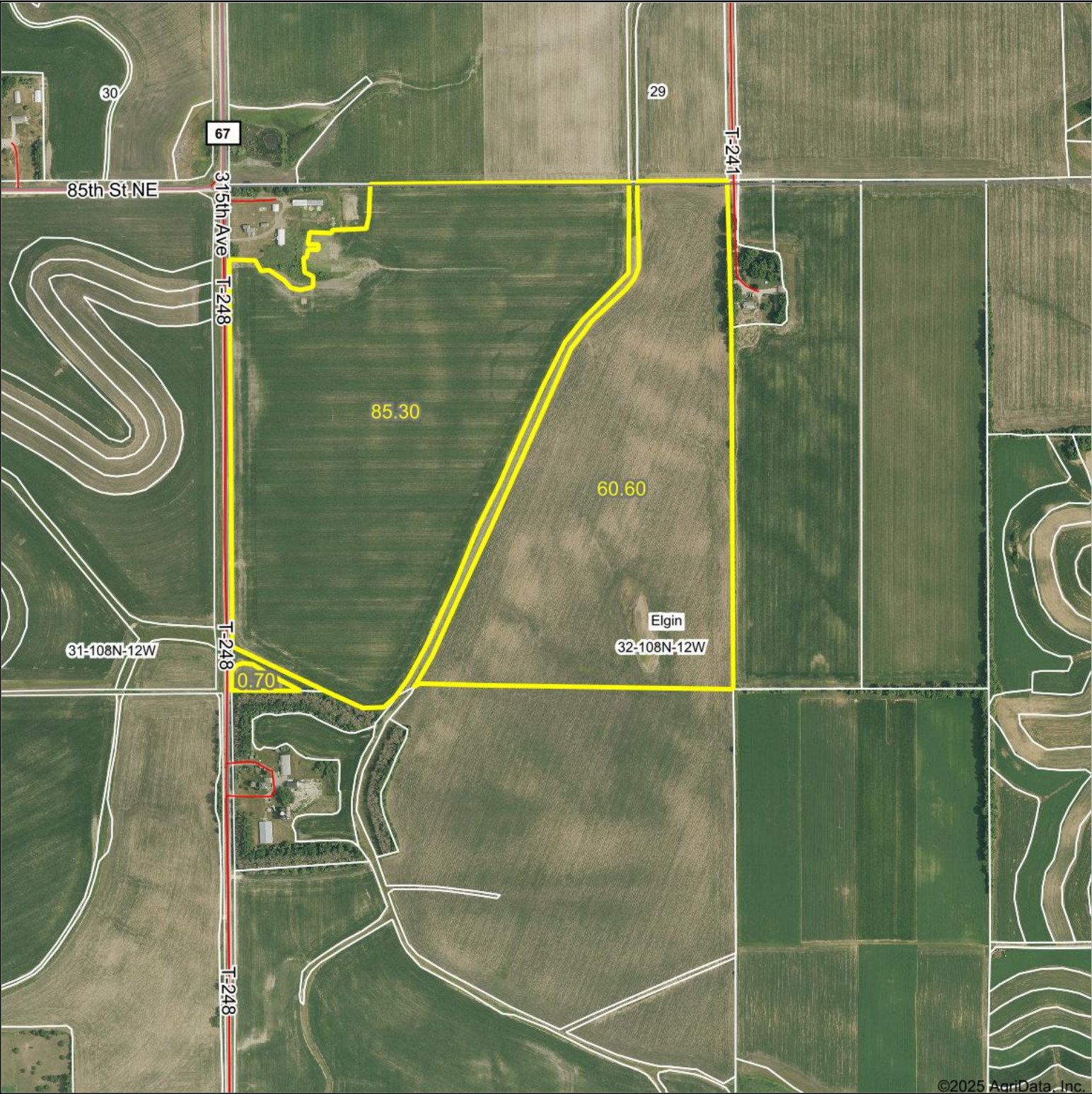
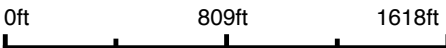


Aerial Map



©2025 AgriData, Inc.

Boundary Center: 44° 7' 6.63, -92° 17' 39.93



32-108N-12W
Wabasha County
Minnesota

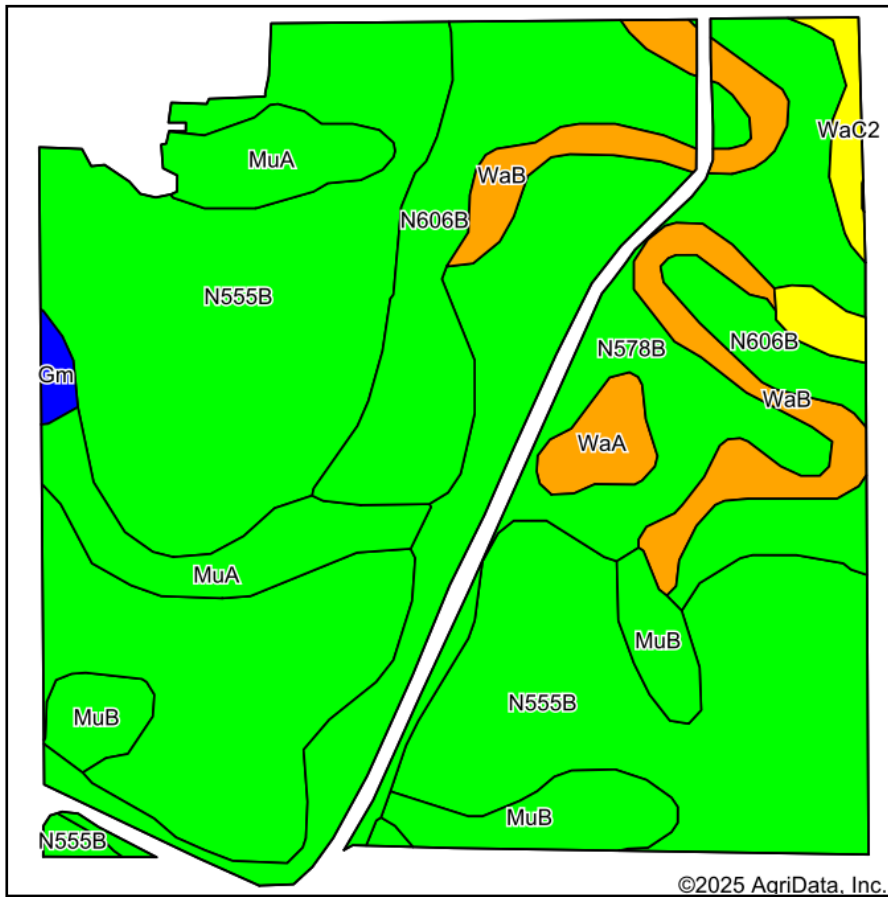


Maps Provided By:
surety
CUSTOMIZED ONLINE MAPPING
© AgriData, Inc. 2023 www.AgriDataInc.com

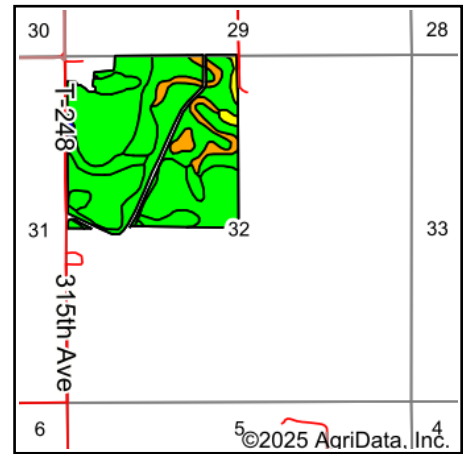
8/14/2025

Field borders provided by Farm Service Agency as of 5/21/2008.

Soils Map



Soils data provided by USDA and NRCS.



State: **Minnesota**
 County: **Wabasha**
 Location: **32-108N-12W**
 Township: **Elgin**
 Acres: **146.6**
 Date: **8/14/2025**

Maps Provided By:

 CUSTOMIZED ONLINE MAPPING
 © AgriData, Inc. 2023 www.AgriDataInc.com



Area Symbol: MN157, Soil Area Version: 21

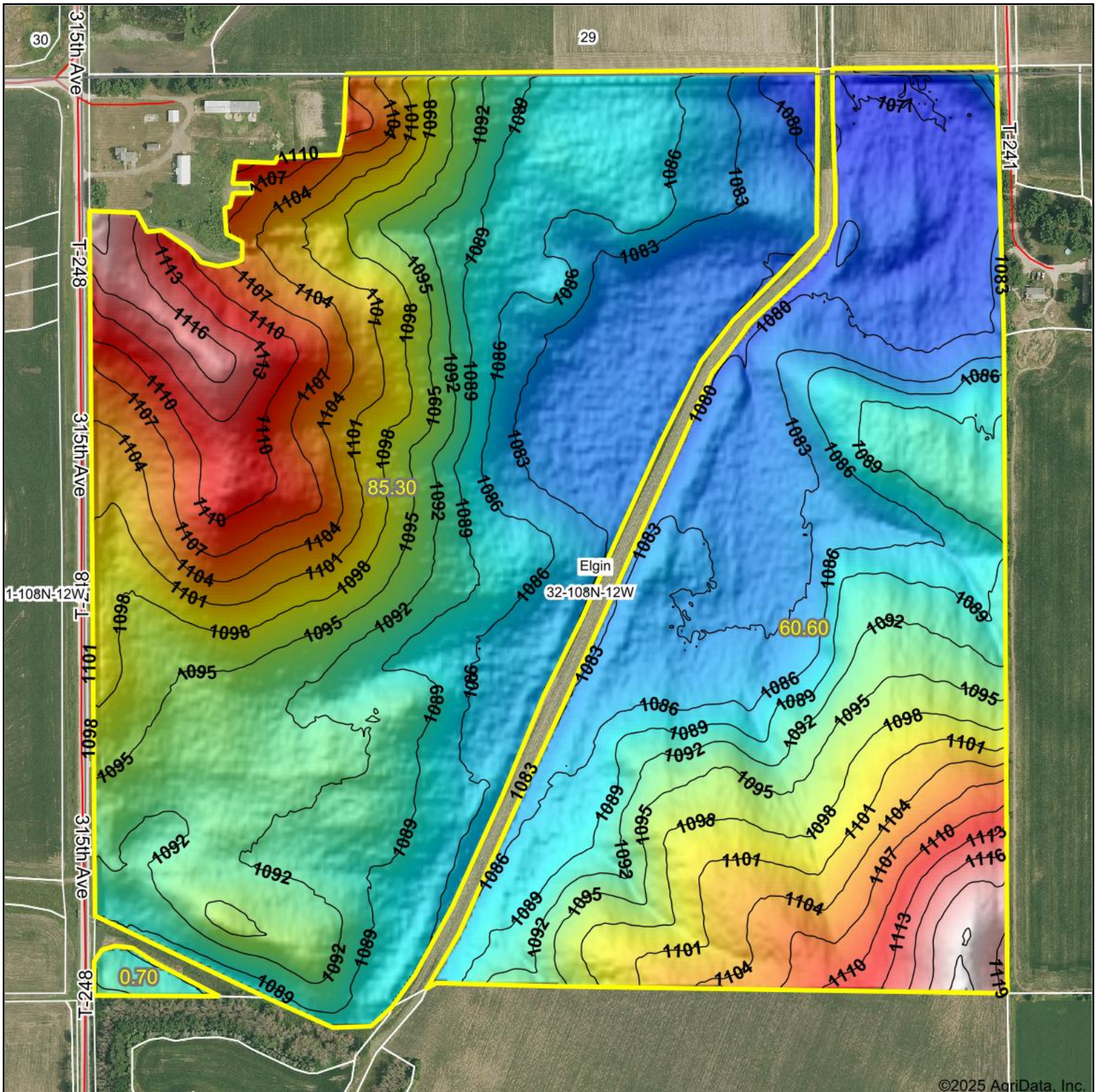
Code	Soil Description	Acres	Percent of field	PI Legend	Restrictive Layer	Soil Drainage	Non-Irr Class *c	Productivity Index	*n NCCPI Overall
N555B	Tama-Dinsmore complex, 2 to 6 percent slopes	69.48	47.3%		> 6.5ft.	Well drained	Ile	99	86
N578B	Barremills silt loam, drainageway, 1 to 5 percent slopes, occasionally flooded	27.51	18.8%		> 6.5ft.	Well drained	Ile	94	81
N606B	Richwood silt loam, 1 to 6 percent slopes	18.94	12.9%		> 6.5ft.	Well drained	Ile	99	90
WaB	Waukegan silt loam, 2 to 6 percent slopes	9.04	6.2%		> 6.5ft.	Well drained	Ile	75	74
MuA	Muscatine silt loam, 0 to 2 percent slopes	8.92	6.1%		> 6.5ft.	Somewhat poorly drained	Iw	98	83
MuB	Muscatine silt loam, 2 to 6 percent slopes	7.46	5.1%		> 6.5ft.	Somewhat poorly drained	Ile	95	82
WaC2	Waukegan silt loam, 6 to 12 percent slopes, moderately eroded	2.48	1.7%		> 6.5ft.	Well drained	IIle	62	67
WaA	Waukegan silt loam, 0 to 2 percent slopes	2.10	1.4%		> 6.5ft.	Well drained	IIs	75	79
Gm	Garwin silt loam	0.67	0.5%		> 6.5ft.	Poorly drained	IIw	86	55
Weighted Average							1.96	95.3	*n 83.9

*n: The aggregation method is "Weighted Average using all components"

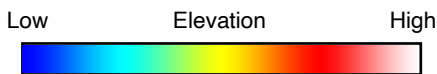
*c: Using Capabilities Class Dominant Condition Aggregation Method

Soils data provided by USDA and NRCS.

Topography Hillshade



©2025 AgriData, Inc.



Source: USGS 3 meter dem

Interval(ft): 3

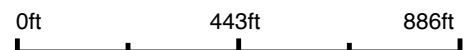
Min: 1,076.1

Max: 1,122.5

Range: 46.4

Average: 1,092.5

Standard Deviation: 9.94 ft



8/14/2025

32-108N-12W
Wabasha County
Minnesota

Boundary Center: 44° 7' 6.63, -92° 17' 39.93

Maps Provided By:

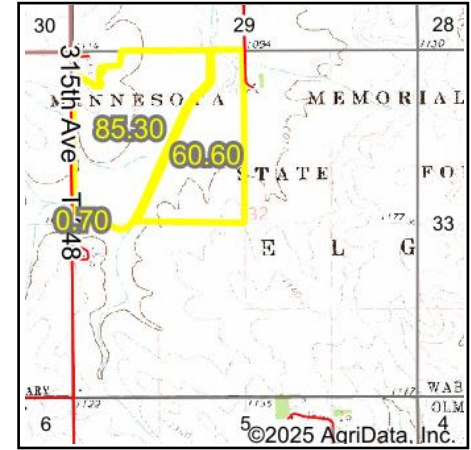
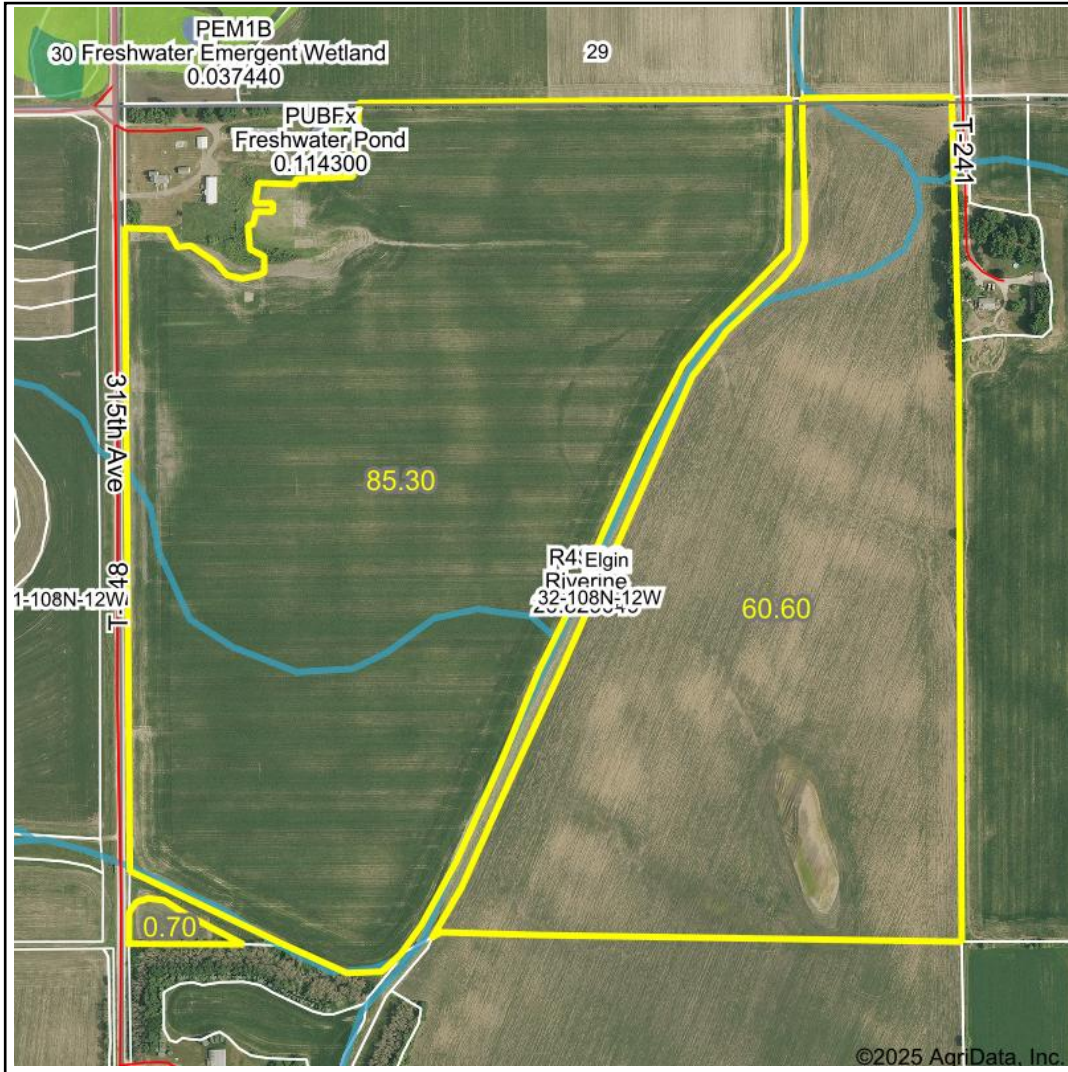


© AgriData, Inc. 2023

www.AgriDataInc.com

Field borders provided by Farm Service Agency as of 5/21/2008.

Wetlands Map



State: **Minnesota**
 Location: **32-108N-12W**
 County: **Wabasha**
 Township: **Elgin**
 Date: **8/14/2025**

Maps Provided By:

 CUSTOMIZED ONLINE MAPPING
 © AgriData, Inc. 2023 www.AgriDataInc.com



0ft 688ft 1376ft

Classification Code	Type	Acres
R4SBC	Riverine	1.79
	Total Acres	1.79

Data Source: National Wetlands Inventory website. U.S. DoI, Fish and Wildlife Service, Washington, D.C. <http://www.fws.gov/wetlands/>