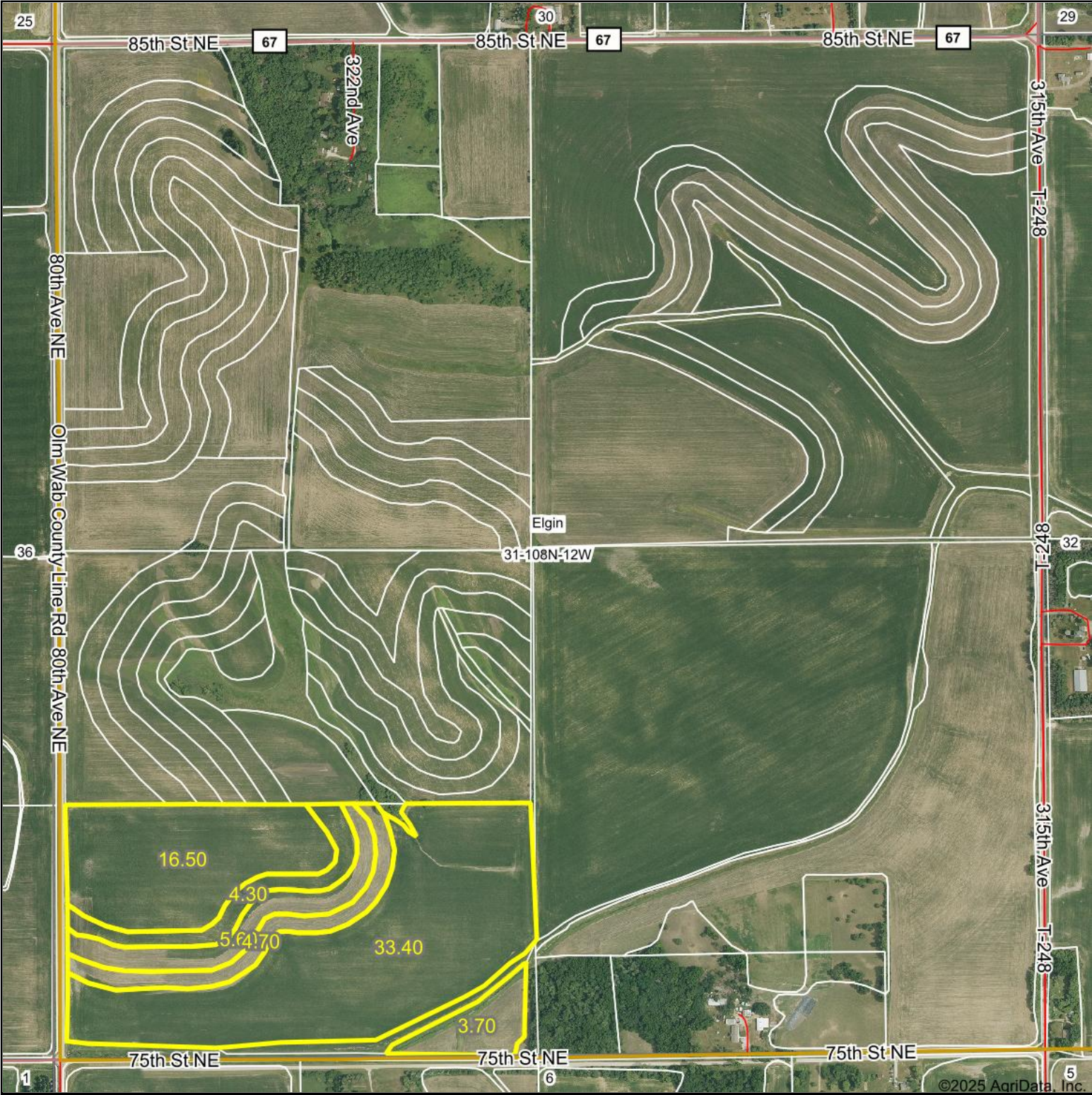


Aerial Map



Boundary Center: 44° 6' 34.42, -92° 18' 51.07

0ft 809ft 1618ft

31-108N-12W
Wabasha County
Minnesota

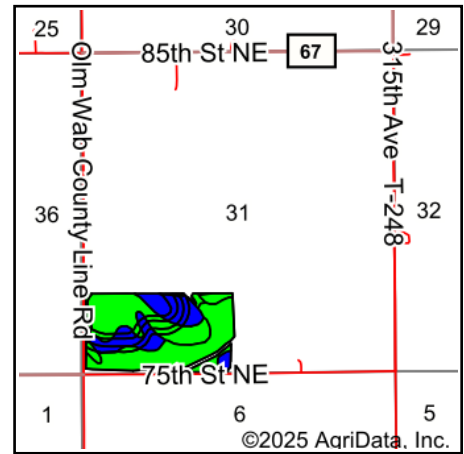
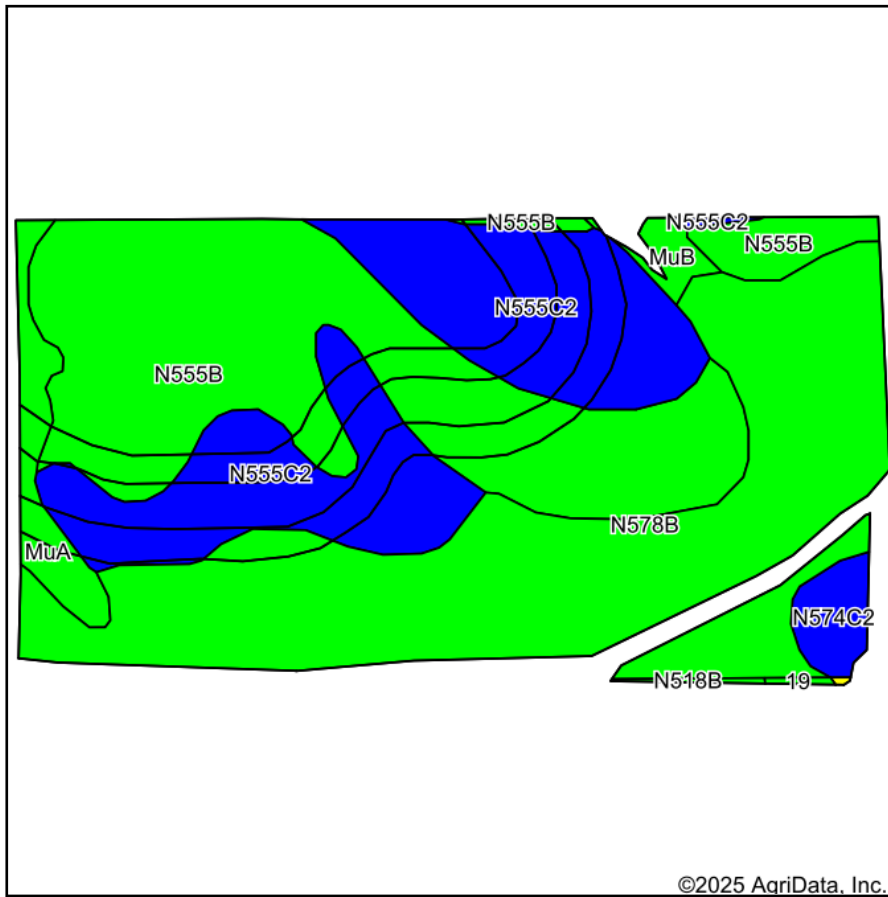


Maps Provided By:
surety
CUSTOMIZED ONLINE MAPPING
© AgriData, Inc. 2023 www.AgriDataInc.com

8/14/2025

Field borders provided by Farm Service Agency as of 5/21/2008.

Soils Map



State: **Minnesota**
 County: **Wabasha**
 Location: **31-108N-12W**
 Township: **Elgin**
 Acres: **68.2**
 Date: **8/14/2025**

Maps Provided By:
surety
 CUSTOMIZED ONLINE MAPPING
 © AgriData, Inc. 2023 www.AgriDataInc.com



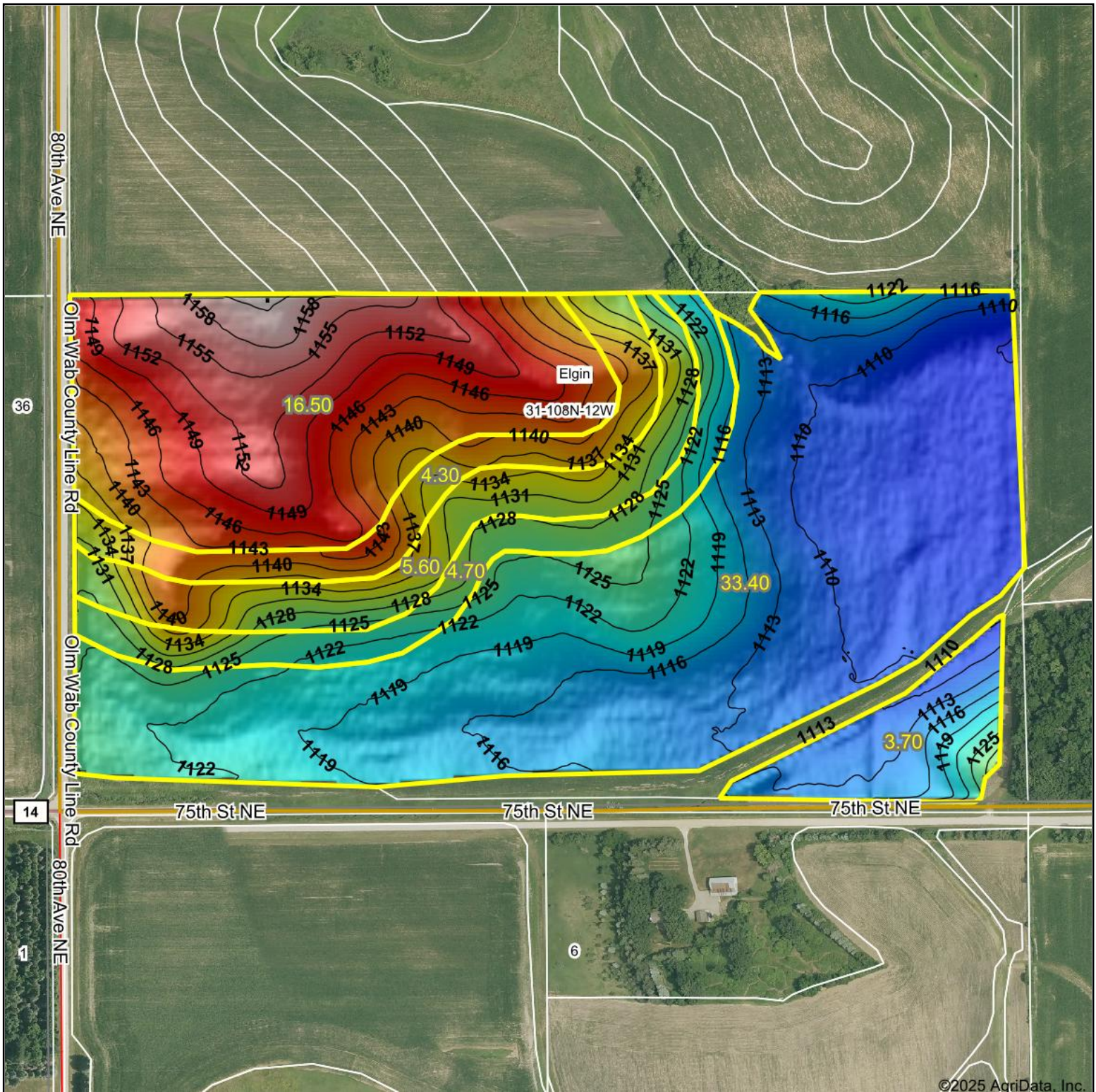
Area Symbol: MN109, Soil Area Version: 19
 Area Symbol: MN157, Soil Area Version: 21

Code	Soil Description	Acres	Percent of field	PI Legend	Restrictive Layer	Soil Drainage	Non-Irr Class *c	Productivity Index	*n NCCPI Overall
N578B	Barremills silt loam, drainageway, 1 to 5 percent slopes, occasionally flooded	24.90	36.5%		> 6.5ft.	Well drained	Ile	94	81
N555B	Tama-Dinsmore complex, 2 to 6 percent slopes	22.56	33.1%		> 6.5ft.	Well drained	Ile	99	86
N555C2	Tama-Dinsmore complex, 6 to 12 percent slopes, moderately eroded	16.33	23.9%		> 6.5ft.	Well drained	IIle	89	81
MuA	Muscatine silt loam, 0 to 2 percent slopes	2.24	3.3%		> 6.5ft.	Somewhat poorly drained	Iw	98	83
N574C2	Downs-Hersey complex, 6 to 12 percent slopes, moderately eroded	1.31	1.9%		> 6.5ft.	Well drained	IIle	81	83
MuB	Muscatine silt loam, 2 to 6 percent slopes	0.67	1.0%		> 6.5ft.	Somewhat poorly drained	Ile	95	82
N518B	Lindstrom silt loam, 2 to 6 percent slopes	0.11	0.2%		> 6.5ft.	Well drained	Ile	99	90
19	Chaseburg silt loam, moderately well drained, 0 to 2 percent slopes	0.08	0.1%		> 6.5ft.	Moderately well drained	IIw	92	83
Weighted Average							2.23	94.4	*n 82.8

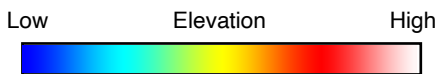
*n: The aggregation method is "Weighted Average using all components"

*c: Using Capabilities Class Dominant Condition Aggregation Method

Topography Hillshade



©2025 AgriData, Inc.



Source: USGS 3 meter dem

Interval(ft): 3

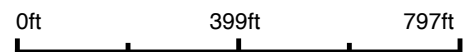
Min: 1,105.8

Max: 1,162.3

Range: 56.5

Average: 1,126.5

Standard Deviation: 14.86 ft



8/14/2025

31-108N-12W
Wabasha County
Minnesota

Boundary Center: 44° 6' 34.42, -92° 18' 51.07

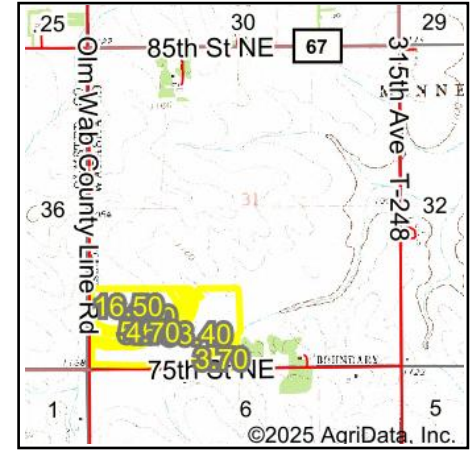
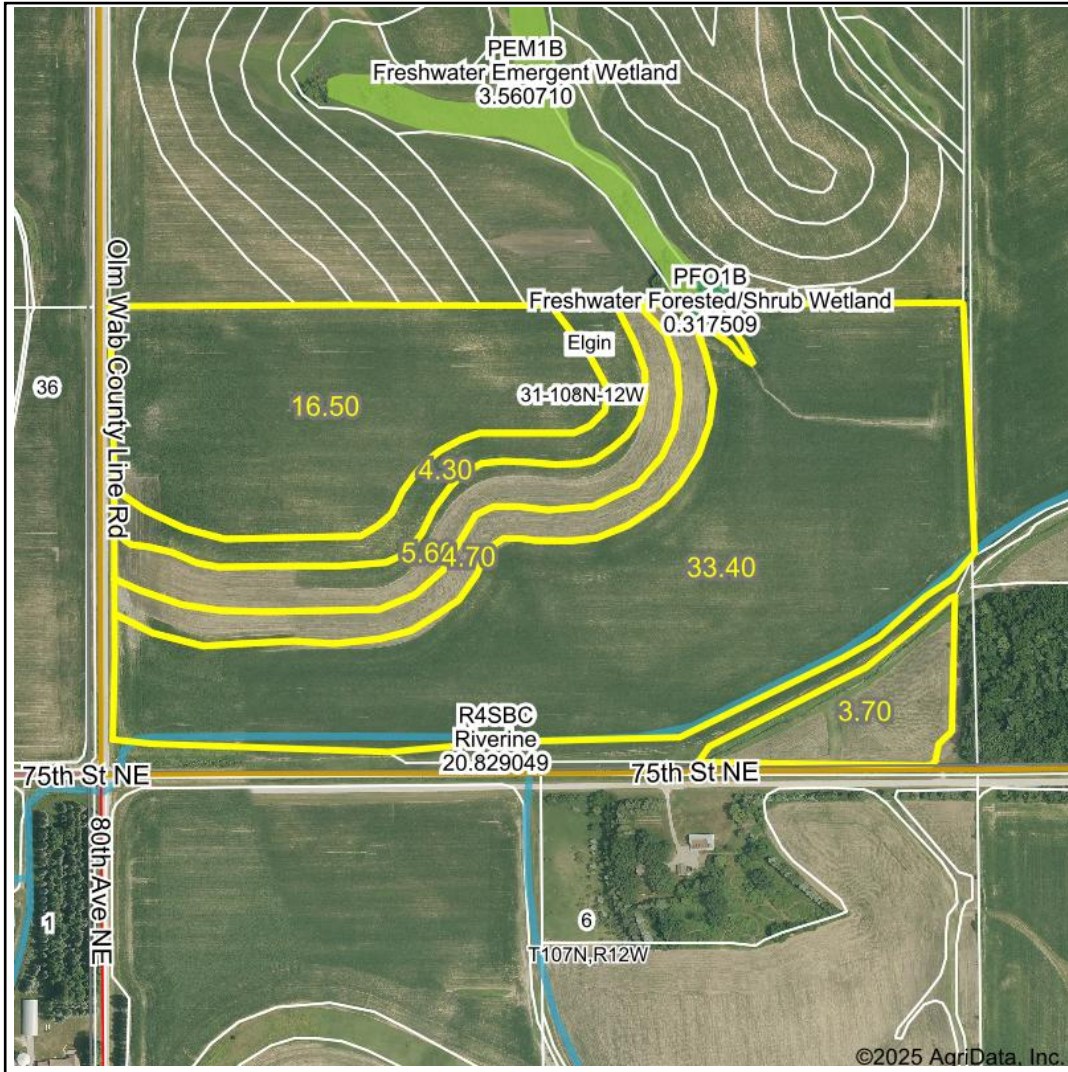
Maps Provided By:



© AgriData, Inc. 2023 www.AgriDataInc.com

Field borders provided by Farm Service Agency as of 5/21/2008.

Wetlands Map



State: **Minnesota**
 Location: **31-108N-12W**
 County: **Wabasha**
 Township: **Elgin**
 Date: **8/14/2025**

Maps Provided By:

 CUSTOMIZED ONLINE MAPPING
 © AgriData, Inc. 2023 www.AgriDataInc.com



0ft 624ft 1247ft

Classification Code	Type	Acres
R4SBC	Riverine	1.07
PFO1B	Freshwater Forested/Shrub Wetland	0.01
Total Acres		1.08

Data Source: National Wetlands Inventory website. U.S. DoI, Fish and Wildlife Service, Washington, D.C. <http://www.fws.gov/wetlands/>