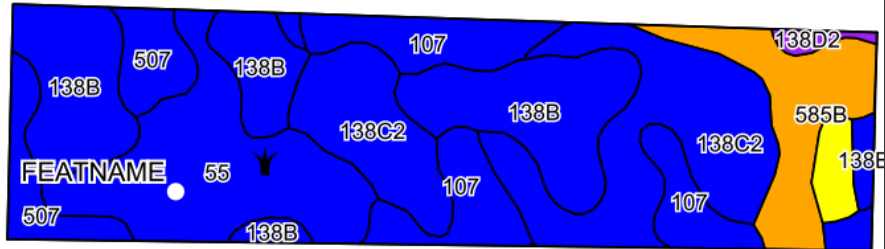
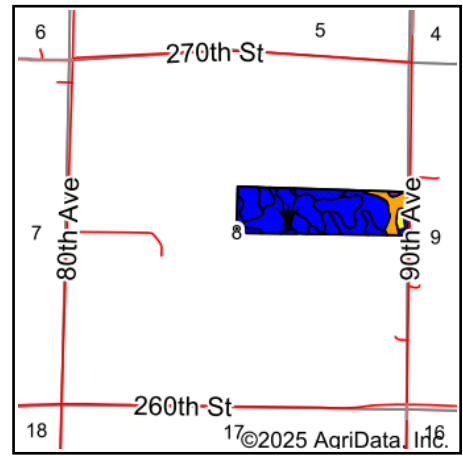


Soils Map



©2025 AgriData, Inc.



State: **Iowa**
 County: **Kossuth**
 Location: **8-96N-29W**
 Township: **Union**
 Acres: **41.82**
 Date: **8/12/2025**



**HIGH
POINT**
LAND COMPANY

Maps Provided By:



Soils data provided by USDA and NRCS.

Area Symbol: IA109, Soil Area Version: 31

Code	Soil Description	Acres	Percent of field	CSR2 Legend	Restrictive Layer	Soil Drainage	Non-Irr Class *c	*j Corn Bu	*i Alfalfa Tons	*j Soybeans Bu	*j Bluegrass Tons	*i Tall Grasses Tons	*i Water-Holding Inch	CSR2**	CSR	*n NC Over
138C2	Clarion loam, 6 to 10 percent slopes, moderately eroded	10.51	25.2%		> 6.5ft.	Well drained	Ille	204.8	5.7	59.4	3.7	6.1	11.3	83	62	
138B	Clarion loam, 2 to 6 percent slopes	10.25	24.5%		> 6.5ft.	Moderately well drained	Ile	225.6	6.3	65.4	4.1	6.8	11.3	89	77	
55	Nicollet clay loam, 1 to 3 percent slopes	7.70	18.4%		> 6.5ft.	Somewhat poorly drained	Iw	233.6	6.1	67.7	4.2	7.0	10.5	89	85	
107	Webster clay loam, 0 to 2 percent slopes	5.56	13.3%		> 6.5ft.	Poorly drained	Ilw	224.0	4.7	65.0	4.0	6.7	11.0	86	80	
585B	Colo-Spillville complex, 2 to 5 percent slopes	3.77	9.0%		> 6.5ft.	Poorly drained	Ilw	203.2	4.3	58.9	3.7	6.1	11.5	79	68	

Soils data provided by USDA and NRCS.


Code	Soil Description	Acres	Percent of field	CSR2 Legend	Restrictive Layer	Soil Drainage	Non-Irr Class *c	*i Corn Bu	*i Alfalfa Tons	*i Soybeans Bu	*i Bluegrass Tons	*i Tall Grasses Tons	*i Water-Holding Inch	CSR2**	CSR	*n NC Over
507	Canisteo clay loam, 0 to 2 percent slopes	2.89	6.9%		> 6.5ft.	Poorly drained	Ilw	224.0	4.7	65.0	4.0	6.7	10.0	84	75	
62C2	Storden loam, 6 to 10 percent slopes, moderately eroded	0.81	1.9%		> 6.5ft.	Well drained	Ille	177.6	5.0	51.5	3.2	5.3	11.0	64	49	
138D2	Clarion loam, 9 to 14 percent slopes, moderately eroded	0.33	0.8%		> 6.5ft.	Well drained	Ille	176.0	4.9	51.0	3.2	5.3	11.3	51	52	
Weighted Average							2.09	218.2	5.6	63.3	3.9	6.5	11	85.1	73.4	*n

**IA has updated the CSR values for each county to CSR2.

*j Yield data provided by the ISPAID Database version 8.1.1 developed by IA State University.

*n: The aggregation method is "Weighted Average using all components"

*c: Using Capabilities Class Dominant Condition Aggregation Method

	Symbol	Name	Description
	WDR	FEATNAME	FEATDESC
	WET	Wet spot	A somewhat poorly drained to very poorly drained area that is at least two drainage classes wetter than the named soils in the surrounding map unit. Typically__to__ acres.