

Aerial Map



Boundary Center: 43° 38' 29.8, -95° 28' 48.77

0ft 663ft 1325ft

14-102N-39W
Nobles County
Minnesota



Maps Provided By:
surety
CUSTOMIZED ONLINE MAPPING
© AgriData, Inc. 2023 www.AgriDataInc.com

7/2/2025

Field borders provided by Farm Service Agency as of 5/21/2008.

DRAIN

1/4 NW1/4

NW1/4 NE1/4

NE1/4 NE1/4

Judicial
Ditch No. 1

Judicial
Ditch No. 1

13-0096-500

13-0096-000

1/4 NW1/4

SW1/4 NE1/4

SE1/4 NE1/4

14

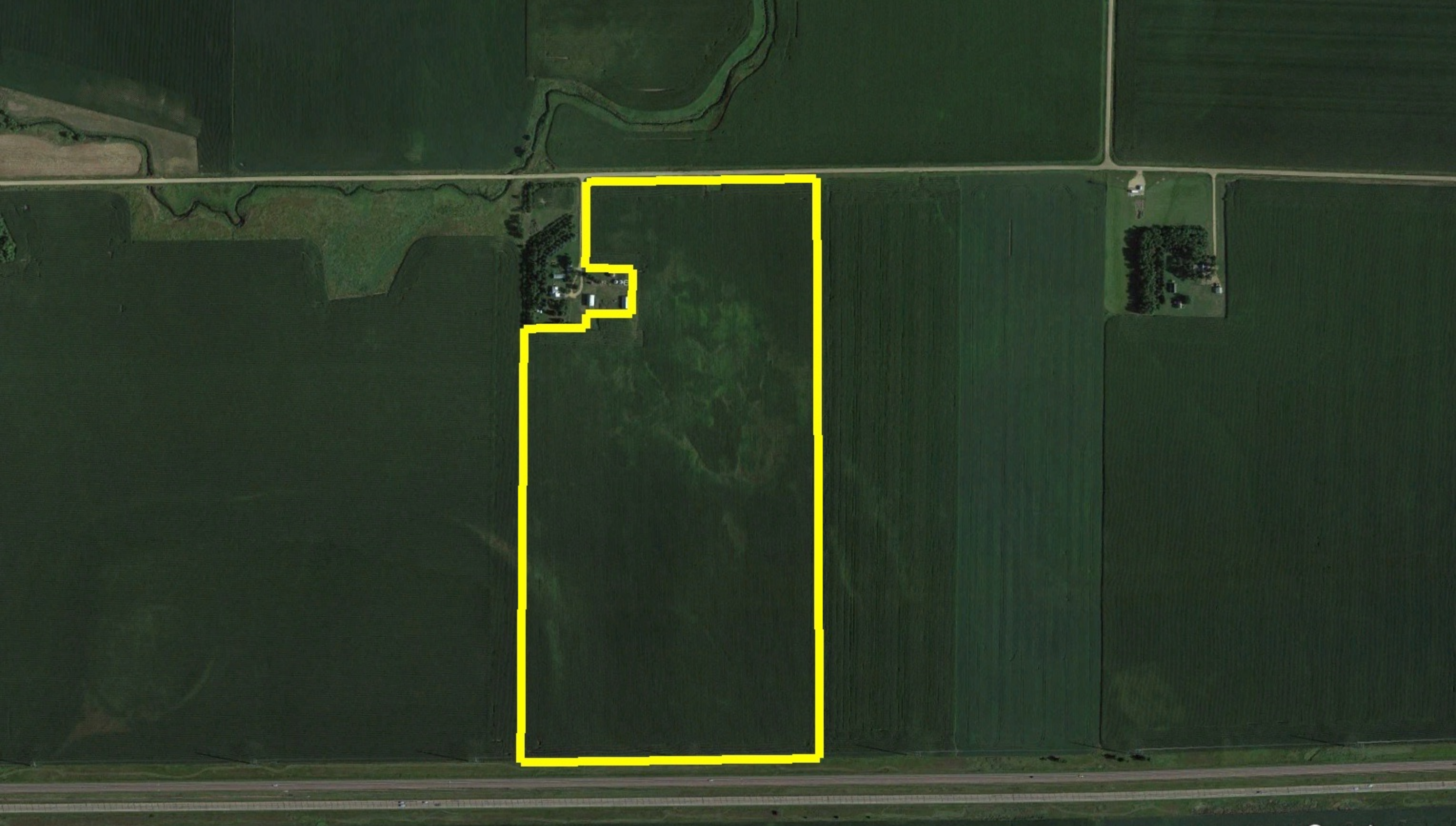
13-0097-500

Judicial Ditch

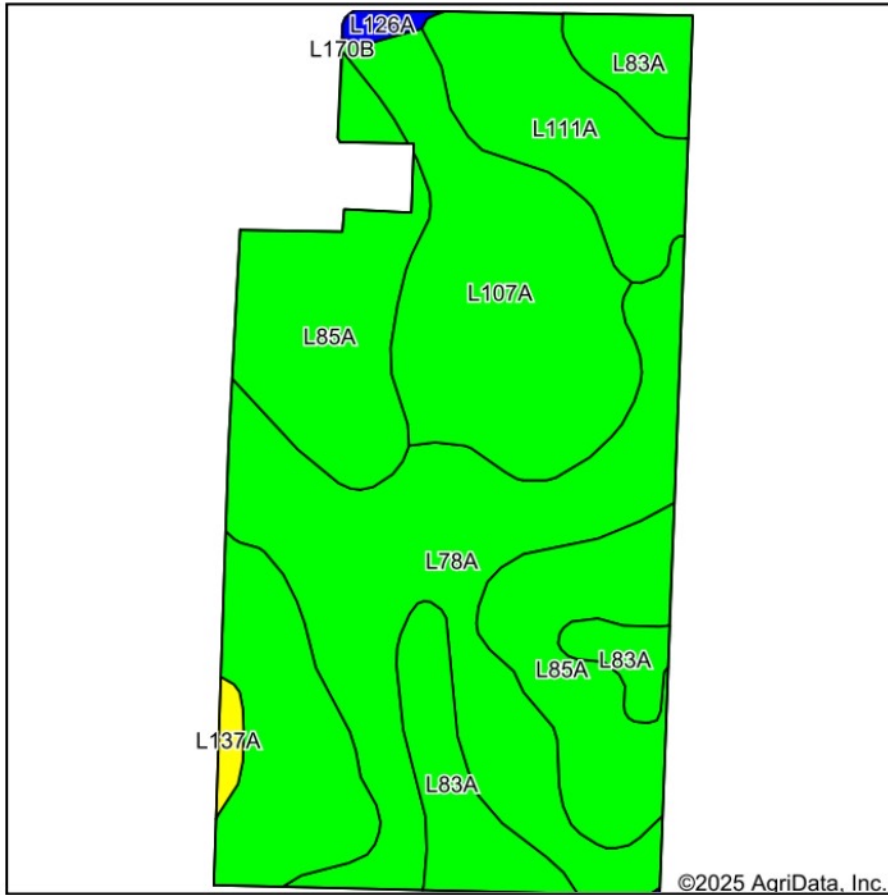
Judicial
Ditch No. 7

NW1/4 SE1/4

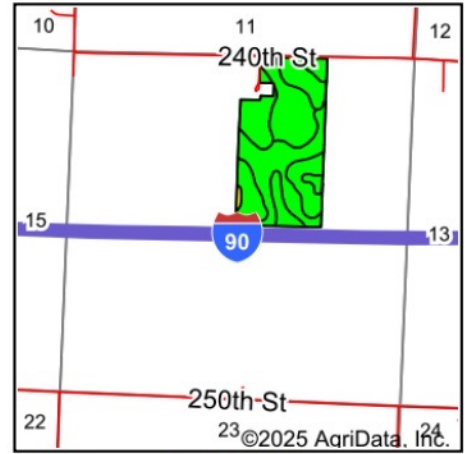
NE1/4 SE1/4



Soils Map



Soils data provided by USDA and NRCS.



State: **Minnesota**
 County: **Nobles**
 Location: **14-102N-39W**
 Township: **Lorain**
 Acres: **74.65**
 Date: **7/2/2025**

Maps Provided By:

 CUSTOMIZED ONLINE MAPPING
 © AgriData, Inc. 2023 www.AgriDataInc.com

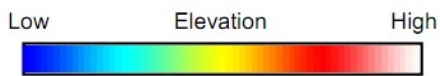
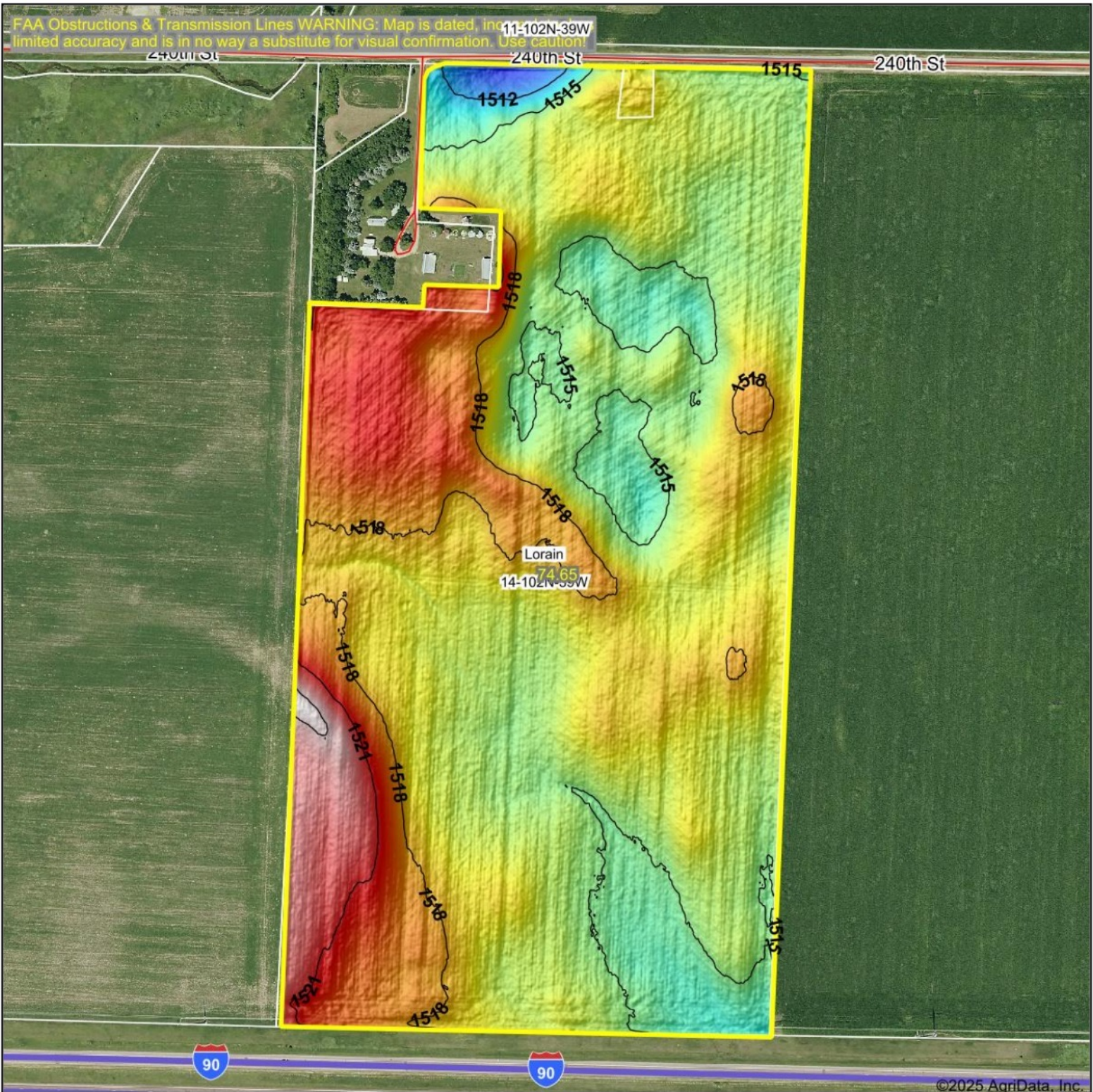


Area Symbol: MN105, Soil Area Version: 23

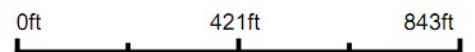
| Code | Soil Description | Acres | Percent of field | PI Legend | Non-Irr Class *c | Productivity Index |
|------------------|---|-------|------------------|-----------|------------------|--------------------|
| L85A | Nicollet clay loam, 1 to 3 percent slopes | 23.42 | 31.4% | | Iw | 99 |
| L78A | Canisteo clay loam, 0 to 2 percent slopes | 21.05 | 28.2% | | IIw | 93 |
| L107A | Canisteo-Glencoe complex, 0 to 2 percent slopes | 14.40 | 19.3% | | IIw | 91 |
| L83A | Webster clay loam, 0 to 2 percent slopes | 7.62 | 10.2% | | IIw | 93 |
| L111A | Nicollet silty clay loam, 1 to 3 percent slopes | 7.15 | 9.6% | | Ie | 100 |
| L137A | Cylinder loam, 0 to 2 percent slopes | 0.55 | 0.7% | | IIs | 65 |
| L126A | Coland clay loam, 0 to 2 percent slopes, occasionally flooded | 0.46 | 0.6% | | IIw | 83 |
| Weighted Average | | | | | 1.59 | 94.9 |

*c: Using Capabilities Class Dominant Condition Aggregation Method

Topography Hillshade



Source: USGS 1 meter dem
Interval(ft): 3
Min: 1,509.3
Max: 1,524.5
Range: 15.2
Average: 1,516.9
Standard Deviation: 2.07 ft



14-102N-39W
Nobles County
Minnesota

Boundary Center: 43° 38' 29.8, -95° 28' 48.77

Maps Provided By:



© AgriData, Inc. 2023

www.AgriDataInc.com

Field borders provided by Farm Service Agency as of 5/21/2008.