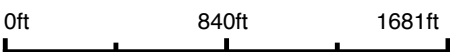


Aerial Map



Boundary Center: 43° 57' 11.11, -95° 19' 51.41



30-106N-37W
Cottonwood County
Minnesota





United States
Department of
Agriculture

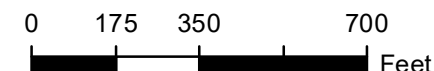
Cottonwood County, Minnesota

Farm 6085

Tract 1512



2025 Program Year

Map Created April 22, 2025






Unless otherwise noted:
 Shares are 100% operator
 Crops are non-irrigated
 Corn = yellow for grain
 Soybeans = common soybeans for grain
 Wheat = HRS, HRW = Grain
 Sunflower = Oil, Non-Oil = Grain
 Oats and Barley = Spring for grain
 Rye = for grain
 Peas = process
 Alfalfa, Mixed Forage AGM, GMA, IGS = for forage
 Beans = Dry Edible
 NAG = for GZ
 Canola = Spring for seed

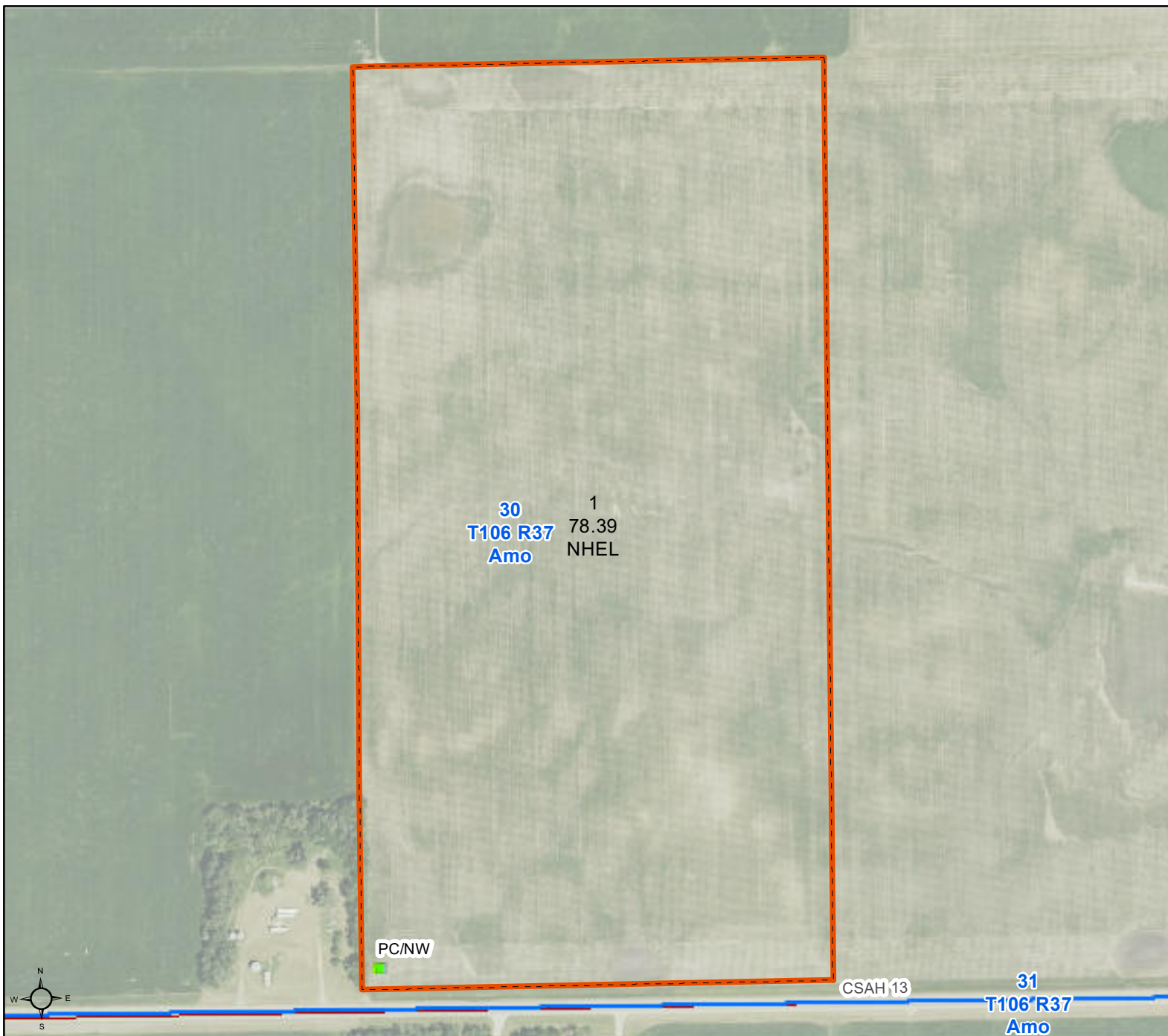
Common Land Unit

-  Cropland
-  Tract Boundary

Wetland Determination Identifiers

-  Restricted Use
-  Limited Restrictions
-  Exempt from Conservation Compliance Provisions

Tract Cropland Total: 78.39 acres



United States Department of Agriculture (USDA) Farm Service Agency (FSA) maps are for FSA Program administration only. This map does not represent a legal survey or reflect actual ownership; rather it depicts the information provided directly from the producer and/or National Agricultural Imagery Program (NAIP) imagery. The producer accepts the data 'as is' and assumes all risks associated with its use. USDA-FSA assumes no responsibility for actual or consequential damage incurred as a result of any user's reliance on this data outside FSA Programs. Wetland identifiers do not represent the size, shape, or specific determination of the area. Refer to your original determination (CPA-026 and attached maps) for exact boundaries and determinations or contact USDA Natural Resources Conservation Service (NRCS). This map displays the 2023 NAIP imagery.



United States
Department of
Agriculture

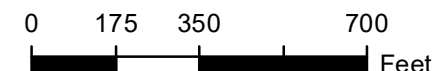
Cottonwood County, Minnesota

Farm 6085

Tract 1513

2025 Program Year

Map Created April 22, 2025



Unless otherwise noted:
Shares are 100% operator
Crops are non-irrigated
Corn = yellow for grain
Soybeans = common soybeans for grain
Wheat = HRS, HRW = Grain
Sunflower = Oil, Non-Oil = Grain
Oats and Barley = Spring for grain
Rye = for grain
Peas = process
Alfalfa, Mixed Forage AGM, GMA, IGS = for forage
Beans = Dry Edible
NAG = for GZ
Canola = Spring for seed

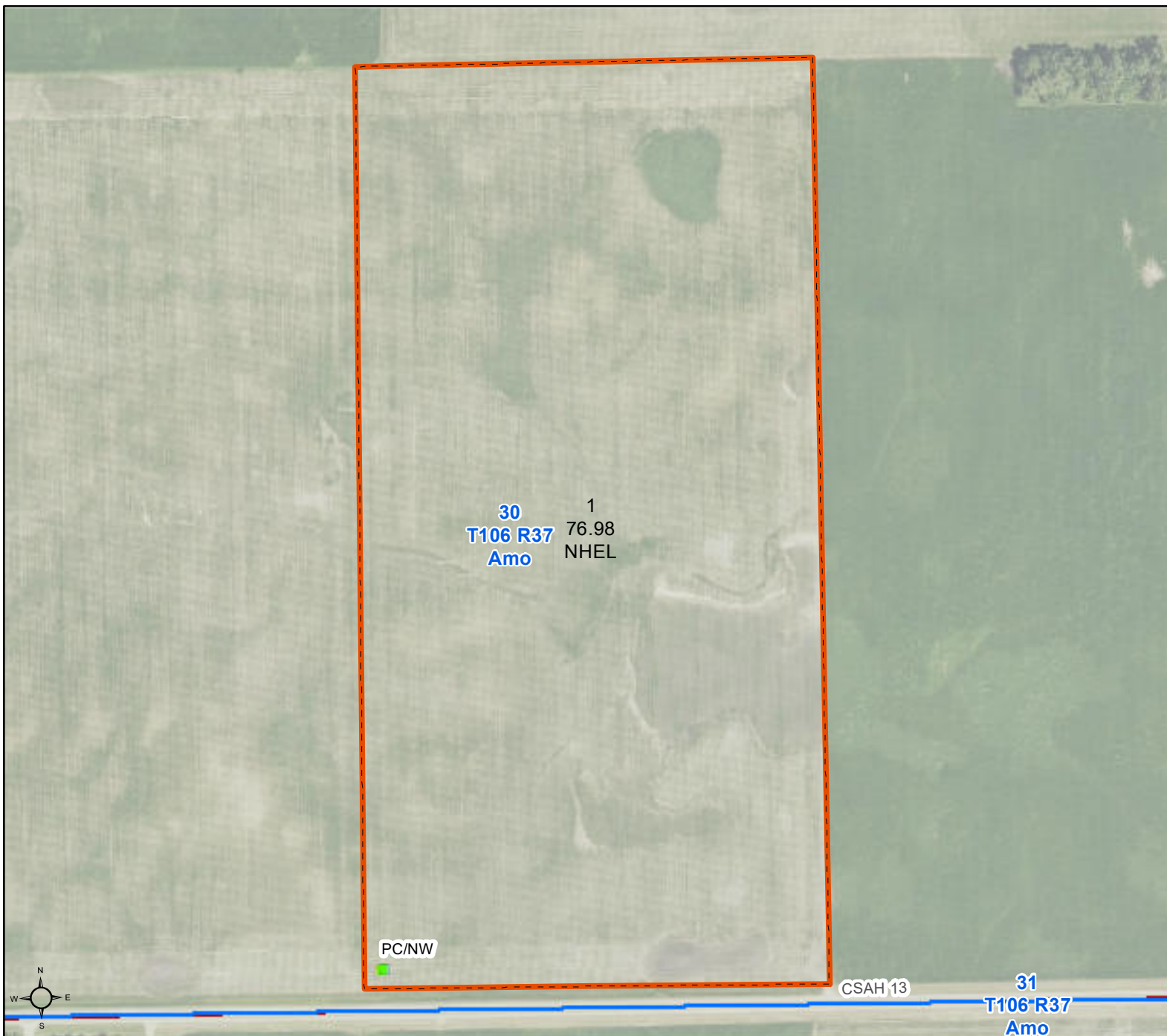
Common Land Unit

- Cropland
- Tract Boundary

Wetland Determination Identifiers

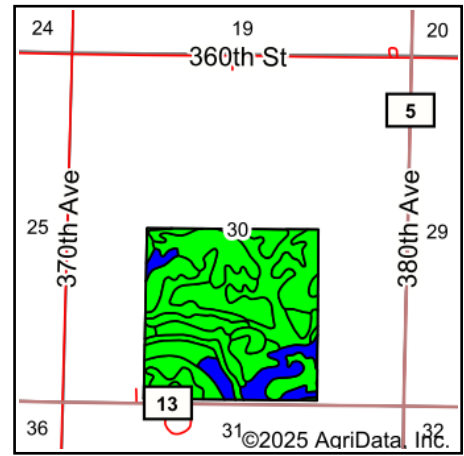
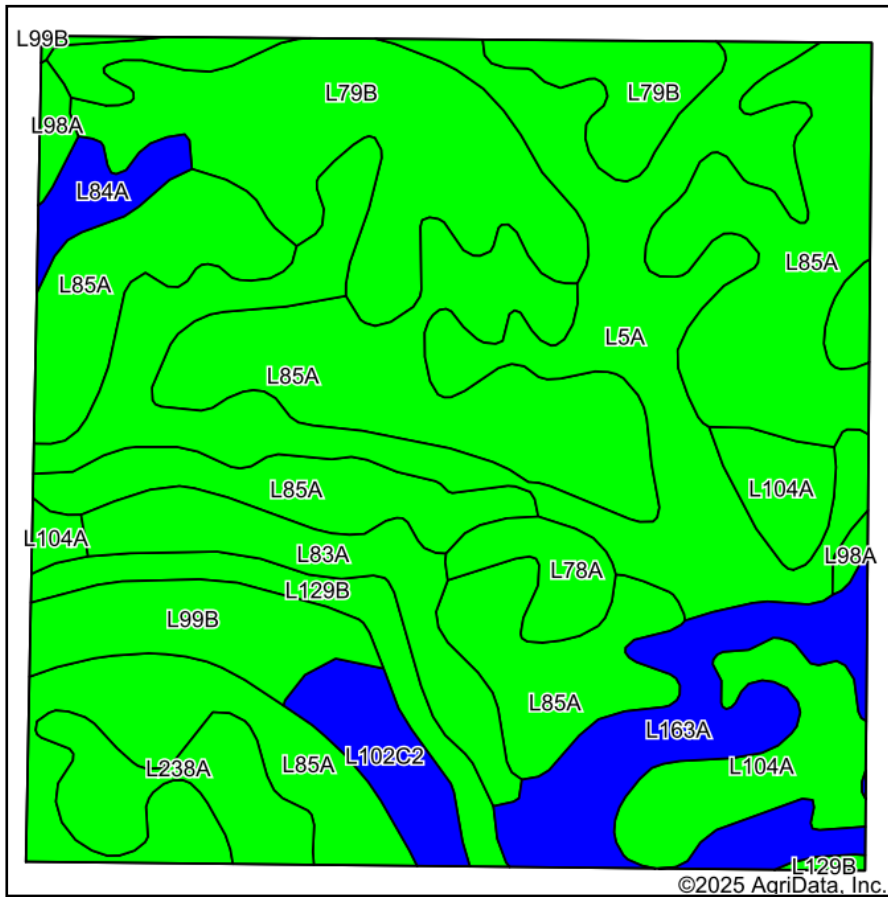
- Restricted Use
- Limited Restrictions
- Exempt from Conservation Compliance Provisions

Tract Cropland Total: 76.98 acres



United States Department of Agriculture (USDA) Farm Service Agency (FSA) maps are for FSA Program administration only. This map does not represent a legal survey or reflect actual ownership; rather it depicts the information provided directly from the producer and/or National Agricultural Imagery Program (NAIP) imagery. The producer accepts the data 'as is' and assumes all risks associated with its use. USDA-FSA assumes no responsibility for actual or consequential damage incurred as a result of any user's reliance on this data outside FSA Programs. Wetland identifiers do not represent the size, shape, or specific determination of the area. Refer to your original determination (CPA-026 and attached maps) for exact boundaries and determinations or contact USDA Natural Resources Conservation Service (NRCS). This map displays the 2023 NAIP imagery.

Soils Map



Maps Provided By:

surety
CUSTOMIZED ONLINE MAPPING
© AgriData, Inc. 2023 www.AgriDataInc.com



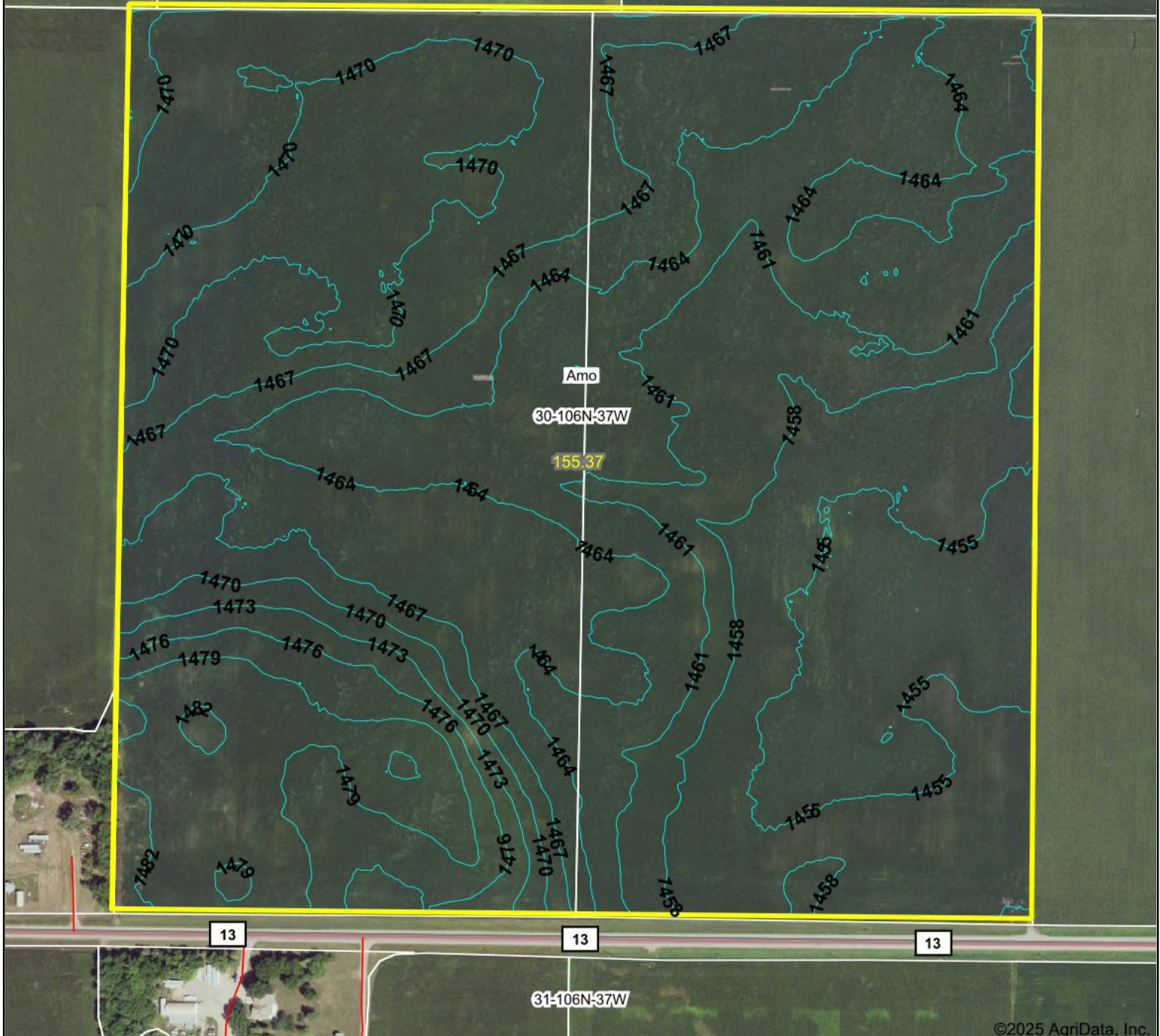
Area Symbol: MN033, Soil Area Version: 25

Code	Soil Description	Acres	Percent of field	PI Legend	Non-Irr Class *c	Productivity Index
L85A	Nicollet clay loam, 1 to 3 percent slopes	53.72	34.5%		Iw	99
L5A	Delft, overwash-Delft complex, 1 to 4 percent slopes	30.56	19.7%		IIw	96
L79B	Clarion loam, 2 to 6 percent slopes	19.51	12.6%		Ile	95
L163A	Okoboji silty clay loam, 0 to 1 percent slopes	10.31	6.6%		IIIw	86
L104A	Jeffers-Canisteo complex, 0 to 2 percent slopes	9.43	6.1%		IIw	92
L83A	Webster clay loam, 0 to 2 percent slopes	6.62	4.3%		IIw	93
L99B	Clarion-Swanlake complex, 2 to 6 percent slopes	5.83	3.8%		Ile	92
L238A	Webster-Delft complex, 0 to 2 percent slopes	5.04	3.2%		IIw	94
L129B	Terril loam, 2 to 6 percent slopes	4.68	3.0%		Ile	99
L102C2	Clarion-Storden complex, 6 to 10 percent slopes, moderately eroded	3.68	2.4%		IIIe	87
L78A	Canisteo clay loam, 0 to 2 percent slopes	2.68	1.7%		IIw	93
L84A	Glencoe clay loam, 0 to 1 percent slopes	2.18	1.4%		IIIw	86
L98A	Crippin-Nicollet complex, 1 to 3 percent slopes	1.13	0.7%		Ie	100
Weighted Average					1.75	95.4

*c: Using Capabilities Class Dominant Condition Aggregation Method

Topography Contours

FAA Obstructions & Transmission Lines WARNING: Map is dated, incomplete, has limited accuracy and is in no way a substitute for visual confirmation. Use caution!



©2025 AgriData, Inc.

Source: USGS 3 meter dem

Interval(ft): 3.0

Min: 1,453.2

Max: 1,485.2

Range: 32.0

Average: 1,465.3

Standard Deviation: 7.25 ft

0ft 471ft 941ft



8/20/2025

30-106N-37W
Cottonwood County
Minnesota

Boundary Center: 43° 57' 11.11, -95° 19' 51.41

Maps Provided By:



© AgriData, Inc. 2023

www.AgriDataInc.com

Field borders provided by Farm Service Agency as of 5/21/2008.