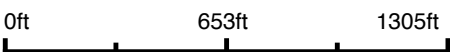


# Aerial Map



Boundary Center: 43° 55' 53.31, -95° 17' 53.19



**4-105N-37W**  
**Cottonwood County**  
**Minnesota**





United States  
Department of  
Agriculture

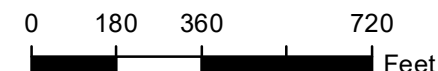
## Cottonwood County, Minnesota

**Farm 6085**

**Tract 6714**

**2025 Program Year**

Map Created April 22, 2025



Unless otherwise noted:  
Shares are 100% operator  
Crops are non-irrigated  
Corn = yellow for grain  
Soybeans = common soybeans for grain  
Wheat = HRS, HRW = Grain  
Sunflower = Oil, Non-Oil = Grain  
Oats and Barley = Spring for grain  
Rye = for grain  
Peas = process  
Alfalfa, Mixed Forage AGM, GMA, IGS = for forage  
Beans = Dry Edible  
NAG = for GZ  
Canola = Spring for seed

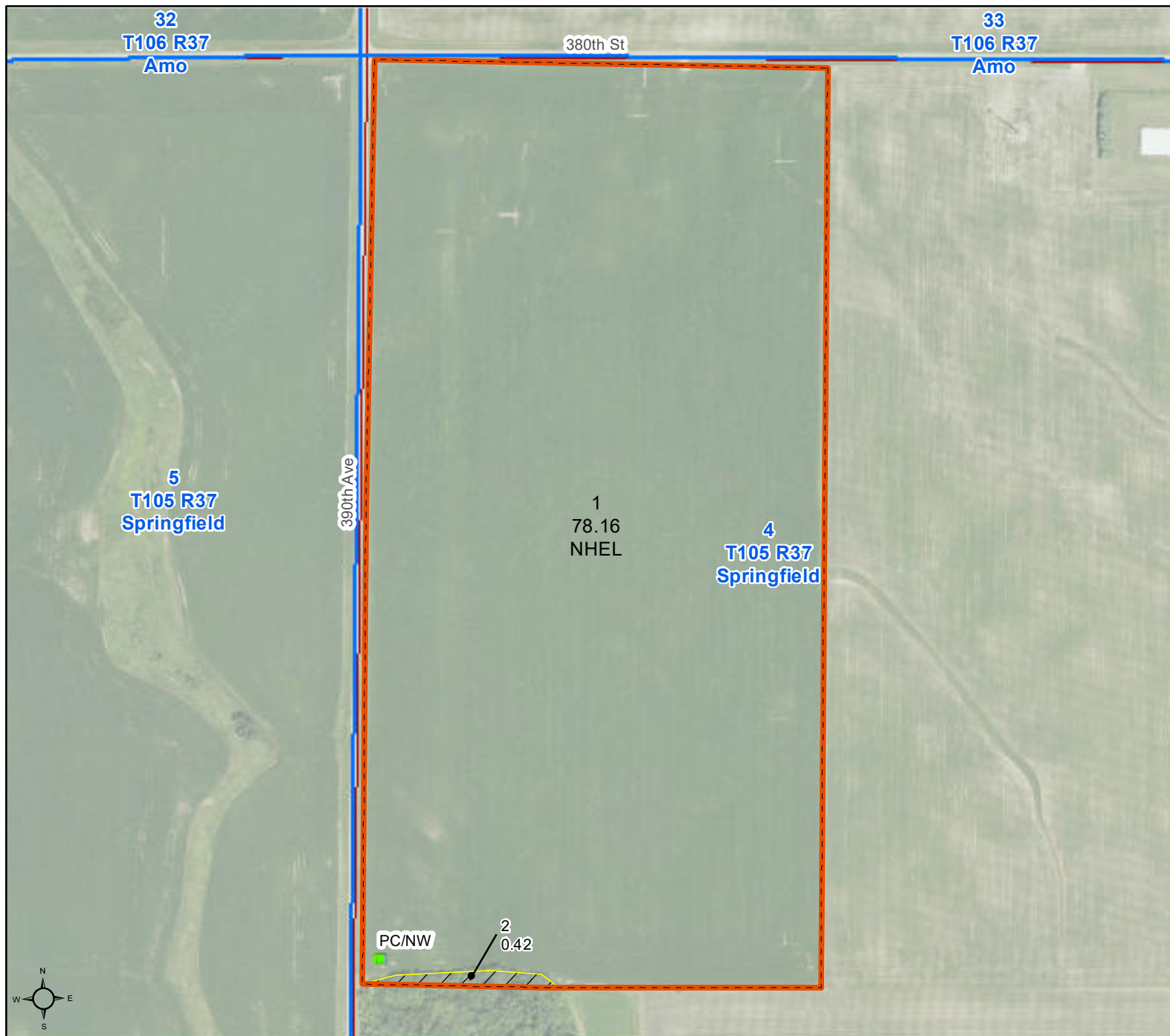
### Common Land Unit

- Non-Cropland
- Cropland
- Tract Boundary

### Wetland Determination Identifiers

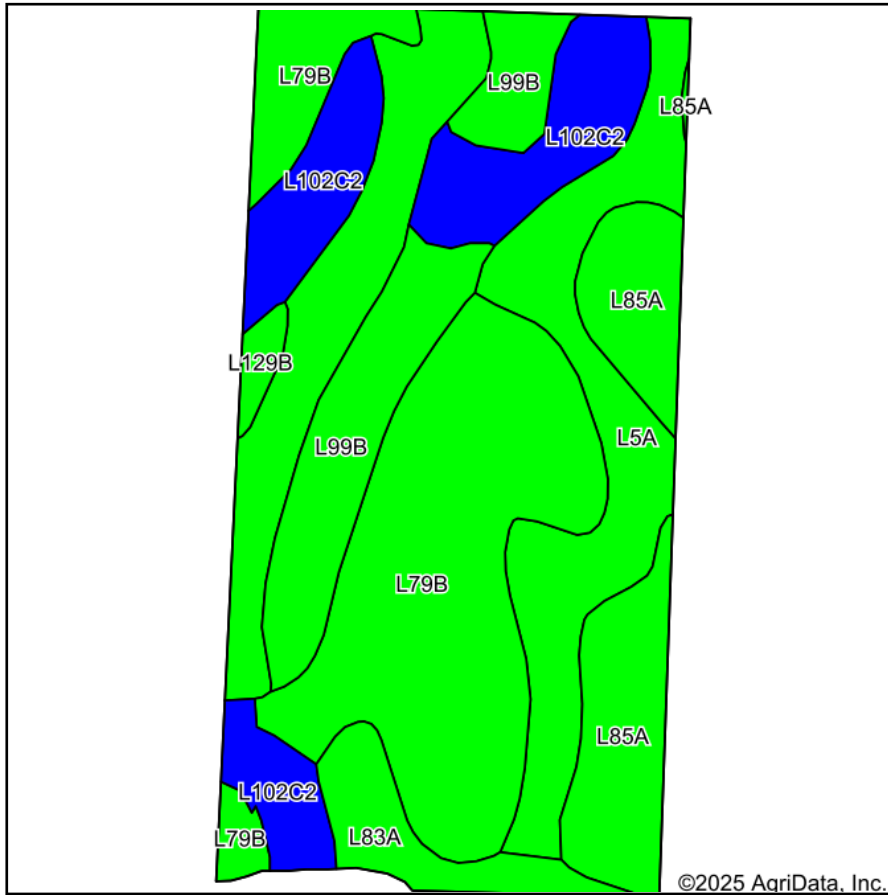
- Restricted Use
- Limited Restrictions
- Exempt from Conservation Compliance Provisions

Tract Cropland Total: 78.16 acres

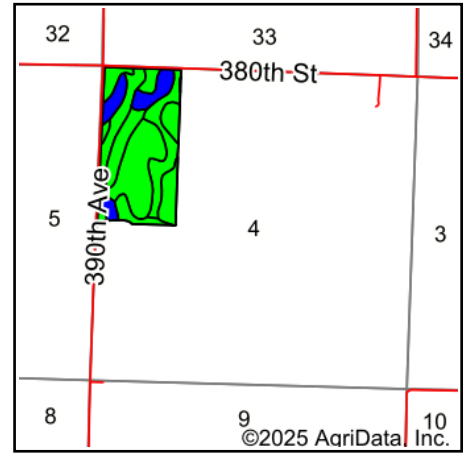


United States Department of Agriculture (USDA) Farm Service Agency (FSA) maps are for FSA Program administration only. This map does not represent a legal survey or reflect actual ownership; rather it depicts the information provided directly from the producer and/or National Agricultural Imagery Program (NAIP) imagery. The producer accepts the data 'as is' and assumes all risks associated with its use. USDA-FSA assumes no responsibility for actual or consequential damage incurred as a result of any user's reliance on this data outside FSA Programs. Wetland identifiers do not represent the size, shape, or specific determination of the area. Refer to your original determination (CPA-026 and attached maps) for exact boundaries and determinations or contact USDA Natural Resources Conservation Service (NRCS). This map displays the 2023 NAIP imagery.

# Soils Map



Soils data provided by USDA and NRCS.



State: **Minnesota**  
 County: **Cottonwood**  
 Location: **4-105N-37W**  
 Township: **Springfield**  
 Acres: **78.16**  
 Date: **8/20/2025**

Maps Provided By:  
  
 CUSTOMIZED ONLINE MAPPING  
 © AgriData, Inc. 2023 www.AgriDataInc.com



Area Symbol: MN033, Soil Area Version: 25

Code	Soil Description	Acres	Percent of field	PI Legend	Non-Irr Class *c	Productivity Index
L79B	Clarion loam, 2 to 6 percent slopes	24.02	30.7%		Ile	95
L5A	Delft, overwash-Delft complex, 1 to 4 percent slopes	20.51	26.2%		IIlw	96
L102C2	Clarion-Storden complex, 6 to 10 percent slopes, moderately eroded	11.24	14.4%		IIIle	87
L85A	Nicollet clay loam, 1 to 3 percent slopes	9.18	11.7%		Iw	99
L99B	Clarion-Swanlake complex, 2 to 6 percent slopes	8.95	11.5%		Ile	92
L83A	Webster clay loam, 0 to 2 percent slopes	3.50	4.5%		IIlw	93
L129B	Terril loam, 2 to 6 percent slopes	0.76	1.0%		Ile	99
Weighted Average					2.03	94.2

\*c: Using Capabilities Class Dominant Condition Aggregation Method



# Topography Contours

FAA Obstructions & Transmission Lines WARNING: Map is dated, incomplete, has limited accuracy. Do not use as a substitute for visual confirmation. Use caution!



©2025 AgriData, Inc.

Source: USGS 3 meter dem

Interval(ft): 3.0

Min: 1,417.9

Max: 1,466.3

Range: 48.4

Average: 1,439.1

Standard Deviation: 10.53 ft

0ft 452ft 904ft



8/20/2025

4-105N-37W  
Cottonwood County  
Minnesota

Boundary Center: 43° 55' 53.31, -95° 17' 53.19

Maps Provided By:



© AgriData, Inc. 2023 www.AgriDataInc.com

Field borders provided by Farm Service Agency as of 5/21/2008.