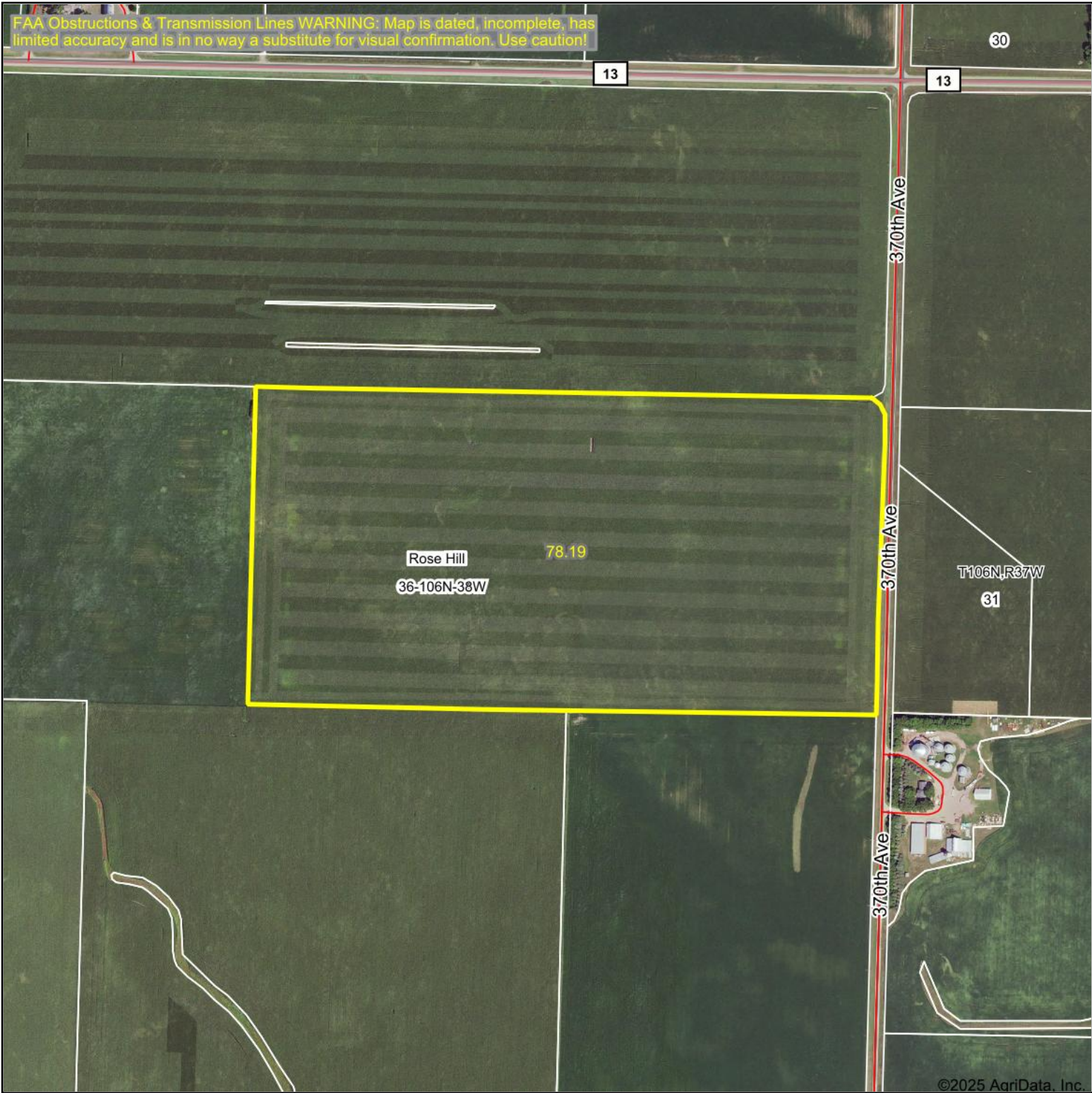


Aerial Map



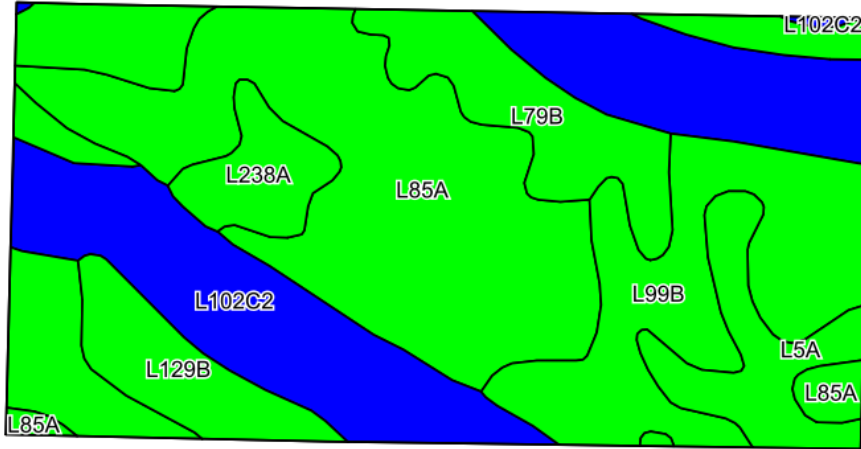
Boundary Center: 43° 56' 37.62, -95° 20' 44.06



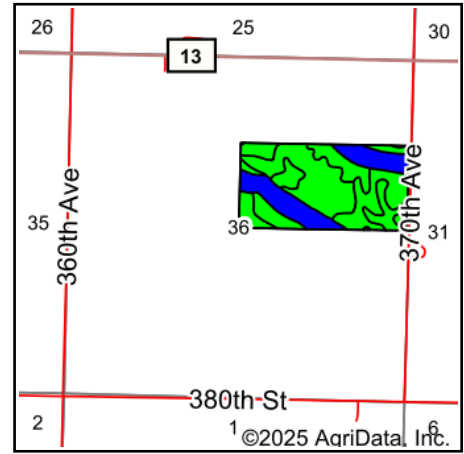
36-106N-38W
Cottonwood County
Minnesota



Soils Map



Soils data provided by USDA and NRCS.



State: **Minnesota**
 County: **Cottonwood**
 Location: **36-106N-38W**
 Township: **Rose Hill**
 Acres: **78.19**
 Date: **8/20/2025**

Maps Provided By:

 CUSTOMIZED ONLINE MAPPING
 © AgriData, Inc. 2023 www.AgriDataInc.com



Area Symbol: MN033, Soil Area Version: 25

Code	Soil Description	Acres	Percent of field	PI Legend	Non-Irr Class *c	Productivity Index
L85A	Nicollet clay loam, 1 to 3 percent slopes	22.00	28.1%		Iw	99
L102C2	Clarion-Storden complex, 6 to 10 percent slopes, moderately eroded	18.53	23.7%		IIle	87
L99B	Clarion-Swanlake complex, 2 to 6 percent slopes	12.04	15.4%		Ile	92
L5A	Delft, overwash-Delft complex, 1 to 4 percent slopes	9.40	12.0%		IIw	96
L79B	Clarion loam, 2 to 6 percent slopes	9.16	11.7%		Ile	95
L129B	Terril loam, 2 to 6 percent slopes	4.11	5.3%		Ile	99
L238A	Webster-Delft complex, 0 to 2 percent slopes	2.95	3.8%		IIw	94
Weighted Average					1.96	94.1

*c: Using Capabilities Class Dominant Condition Aggregation Method

Soils data provided by USDA and NRCS.

Topography Contours

FAA Obstructions & Transmission Lines WARNING: Map is dated, incomplete, has limited accuracy and is in no way a substitute for visual confirmation. Use caution!



Source: USGS 3 meter dem

Interval(ft): 3.0

Min: 1,456.9

Max: 1,490.8

Range: 33.9

Average: 1,477.5

Standard Deviation: 8.43 ft

0ft 459ft 917ft



8/20/2025

36-106N-38W
Cottonwood County
Minnesota

Boundary Center: 43° 56' 37.62, -95° 20' 44.06

Maps Provided By:



© AgriData, Inc. 2023 www.AgriDataInc.com

Field borders provided by Farm Service Agency as of 5/21/2008.



United States
Department of
Agriculture

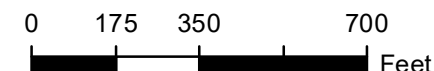
Cottonwood County, Minnesota

Farm 6085

Tract 1352

2025 Program Year

Map Created April 22, 2025



Unless otherwise noted:
Shares are 100% operator
Crops are non-irrigated
Corn = yellow for grain
Soybeans = common soybeans for grain
Wheat = HRS, HRW = Grain
Sunflower = Oil, Non-Oil = Grain
Oats and Barley = Spring for grain
Rye = for grain
Peas = process
Alfalfa, Mixed Forage AGM, GMA, IGS = for forage
Beans = Dry Edible
NAG = for GZ
Canola = Spring for seed

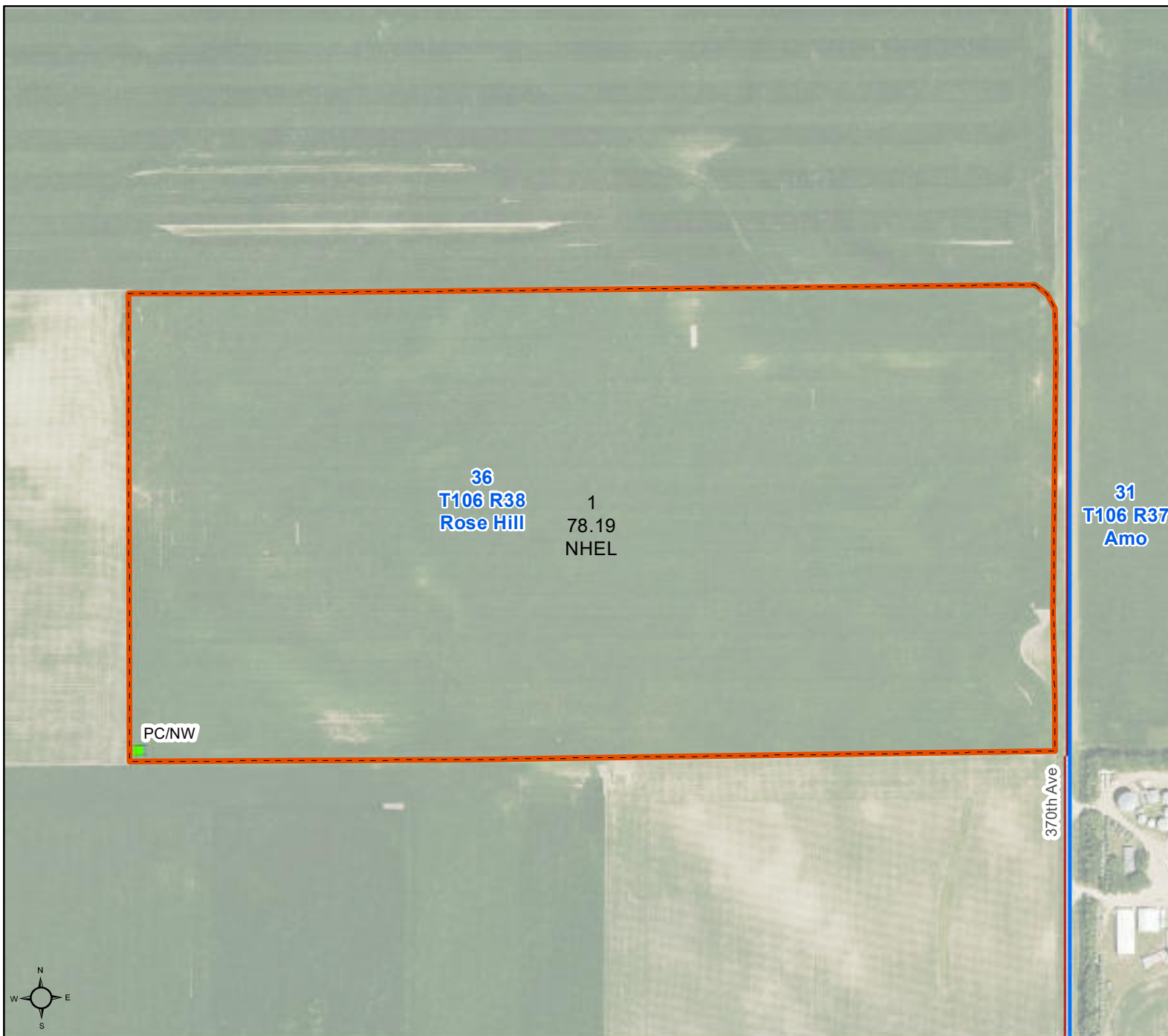
Common Land Unit

- Cropland
- Tract Boundary

Wetland Determination Identifiers

- Restricted Use
- Limited Restrictions
- Exempt from Conservation Compliance Provisions

Tract Cropland Total: 78.19 acres



United States Department of Agriculture (USDA) Farm Service Agency (FSA) maps are for FSA Program administration only. This map does not represent a legal survey or reflect actual ownership; rather it depicts the information provided directly from the producer and/or National Agricultural Imagery Program (NAIP) imagery. The producer accepts the data 'as is' and assumes all risks associated with its use. USDA-FSA assumes no responsibility for actual or consequential damage incurred as a result of any user's reliance on this data outside FSA Programs. Wetland identifiers do not represent the size, shape, or specific determination of the area. Refer to your original determination (CPA-026 and attached maps) for exact boundaries and determinations or contact USDA Natural Resources Conservation Service (NRCS). This map displays the 2023 NAIP imagery.