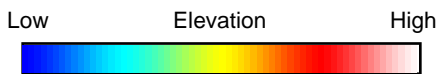
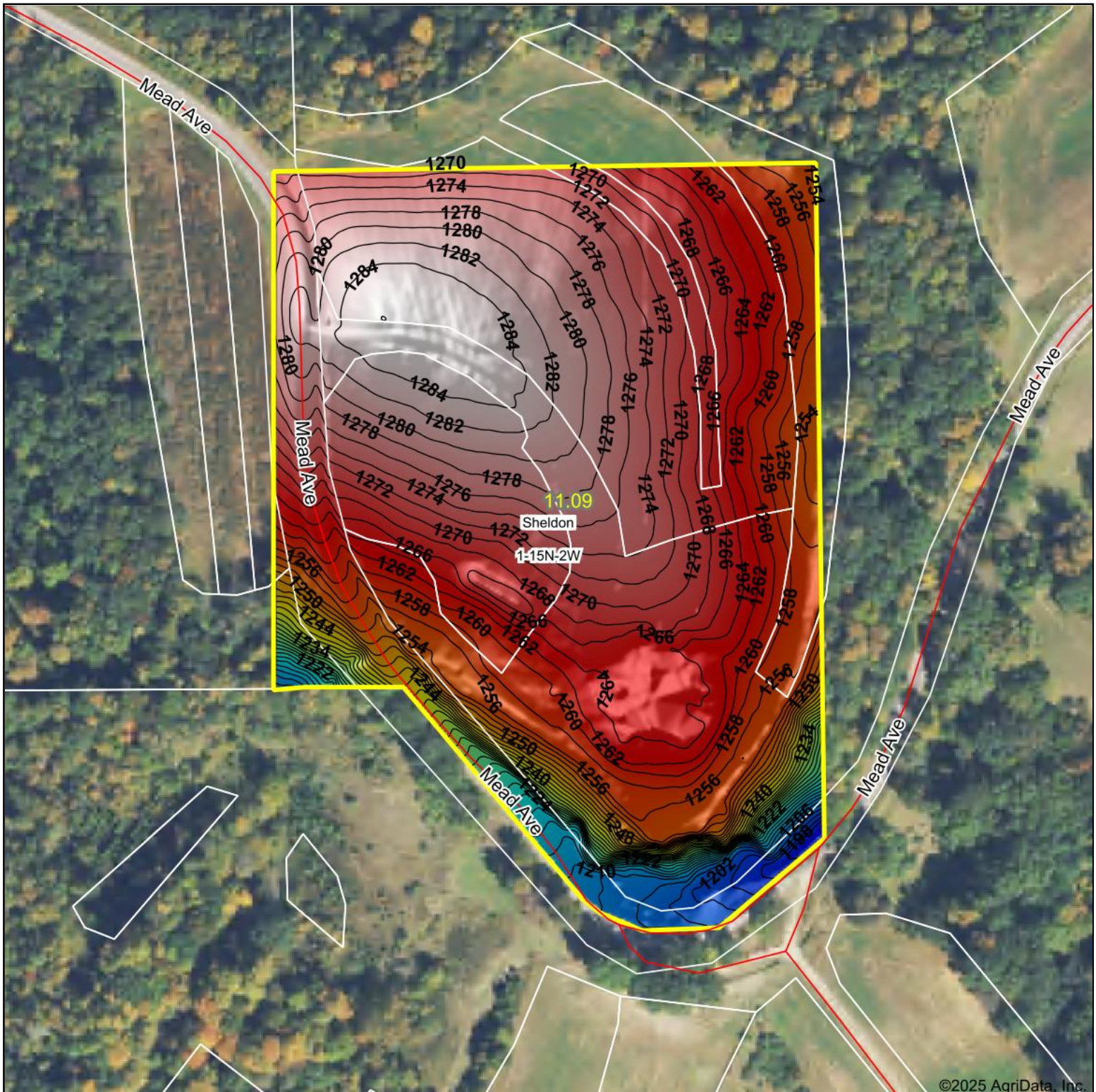


Topography Hillshade



Source: USGS 1 meter dem

Interval(ft): 2

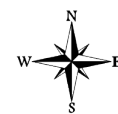
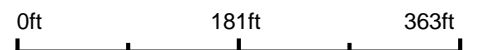
Min: 1,194.2

Max: 1,286.0

Range: 91.8

Average: 1,263.8

Standard Deviation: 18.31 ft



8/27/2025

1-15N-2W
Monroe County
Wisconsin

Boundary Center: 43° 48' 6.07, -90° 33' 39.87

Maps Provided By:



© AgriData, Inc. 2023

www.AgriDataInc.com

Field borders provided by Farm Service Agency as of 5/21/2008.