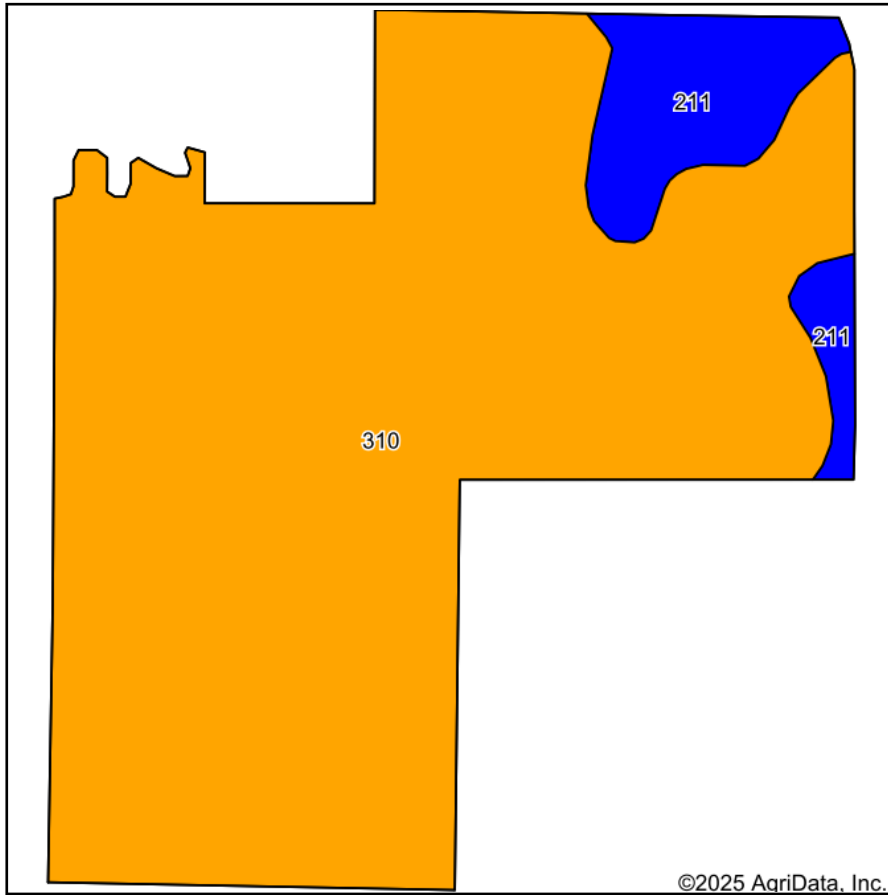
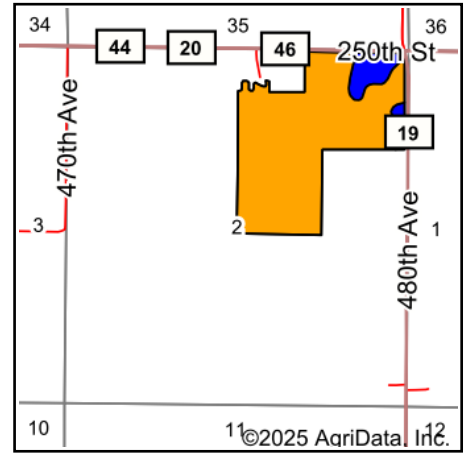


Soils Map



Soils data provided by USDA and NRCS.



State: **Minnesota**
 County: **Faribault**
 Location: **2-104N-26W**
 Township: **Lura**
 Acres: **113.92**
 Date: **9/4/2025**

Maps Provided By:

 CUSTOMIZED ONLINE MAPPING
 © AgriData, Inc. 2023 www.AgriDataInc.com



Area Symbol: MN043, Soil Area Version: 21

Code	Soil Description	Acres	Percent of field	PI Legend	Restrictive Layer	Soil Drainage	Non-Irr Class *c	Productivity Index	*n NCCPI Overall
310	Beauford clay, 0 to 2 percent slopes	103.35	90.7%		> 6.5ft.	Poorly drained	IIw	77	56
211	Lura silty clay, 0 to 1 percent slopes	10.57	9.3%		> 6.5ft.	Very poorly drained	IIIw	81	59
Weighted Average							2.09	77.4	*n 56.3

*n: The aggregation method is "Weighted Average using all components"

*c: Using Capabilities Class Dominant Condition Aggregation Method