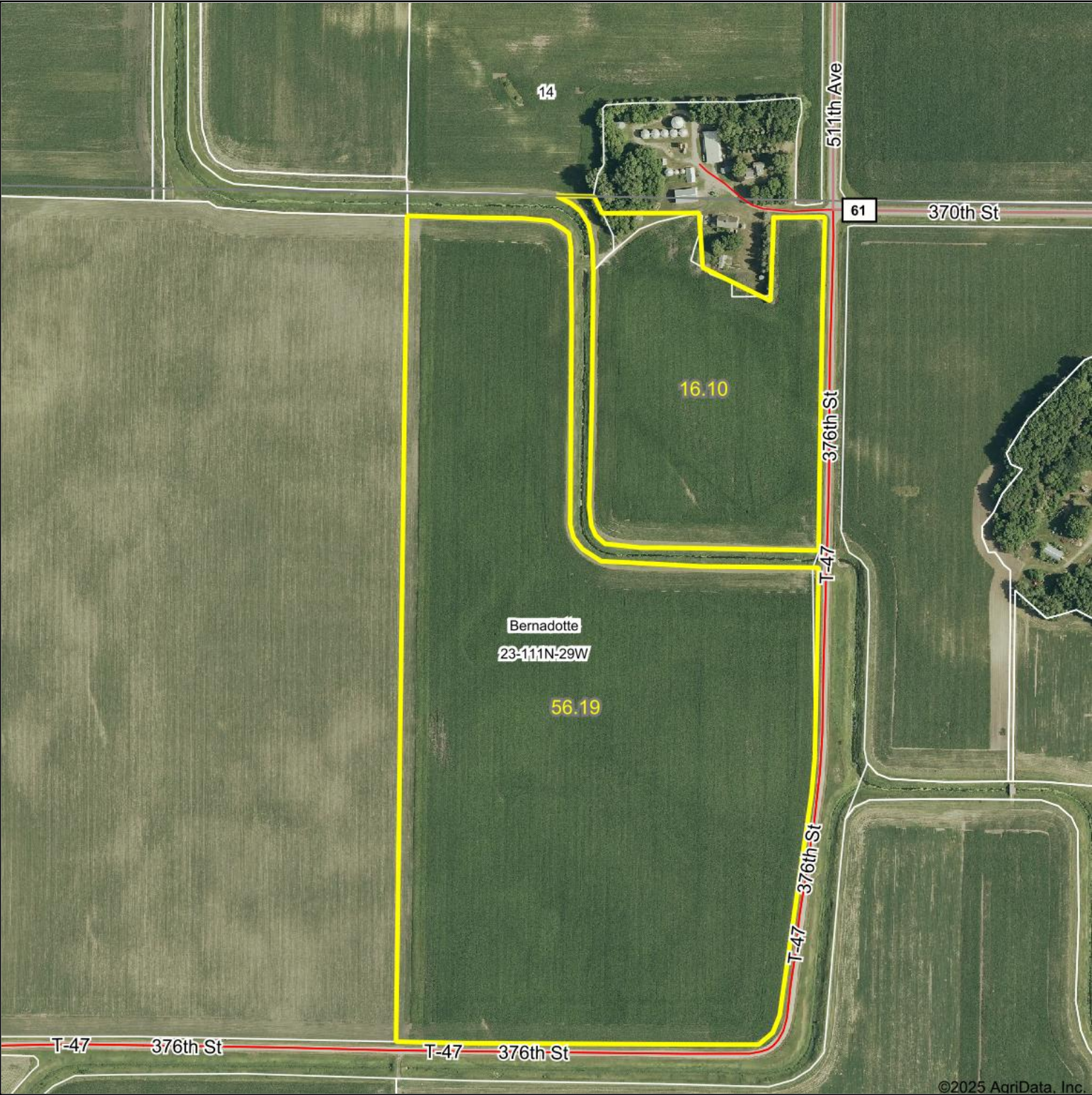
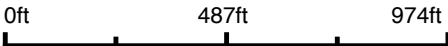


Aerial Map



©2025 AgriData, Inc.

Boundary Center: 44° 24' 34.35, -94° 17' 1.32



23-111N-29W
Nicollet County
Minnesota

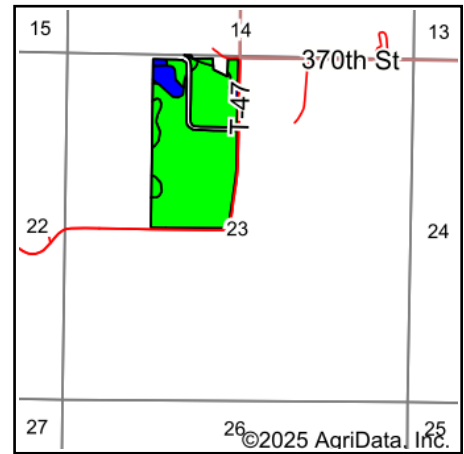


10/2/2025

Soils Map



Soils data provided by USDA and NRCS.



State: **Minnesota**
 County: **Nicollet**
 Location: **23-111N-29W**
 Township: **Bernadotte**
 Acres: **72.29**
 Date: **10/2/2025**

Maps Provided By:

 CUSTOMIZED ONLINE MAPPING
 © AgriData, Inc. 2023 www.AgriDataInc.com



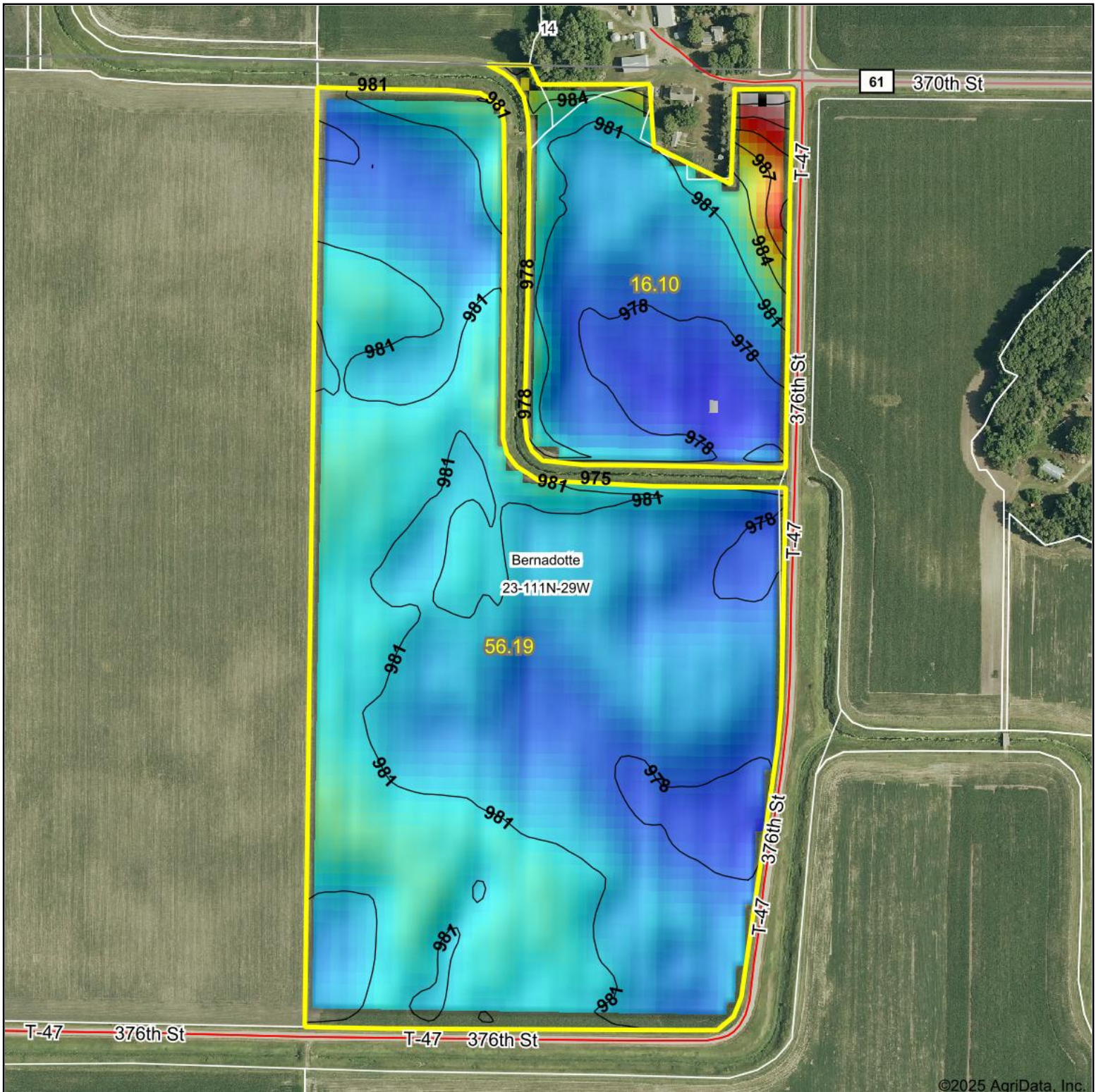
Area Symbol: MN103, Soil Area Version: 20

Code	Soil Description	Acres	Percent of field	PI Legend	Restrictive Layer	Soil Drainage	Non-Irr Class *c	Productivity Index	*n NCCPI Overall
L107A	Canisteo-Glencoe complex, 0 to 2 percent slopes	61.54	85.2%		> 6.5ft.	Poorly drained	IIw	91	81
L84A	Glencoe clay loam, 0 to 1 percent slopes	3.34	4.6%		> 6.5ft.	Very poorly drained	IIIw	86	77
L85A	Nicollet clay loam, 1 to 3 percent slopes	2.54	3.5%		> 6.5ft.	Somewhat poorly drained	Iw	99	81
86	Canisteo clay loam, 0 to 2 percent slopes	2.02	2.8%		> 6.5ft.	Poorly drained	IIw	93	81
921B	Clarion-Swanlake complex, 2 to 6 percent slopes	1.62	2.2%		> 6.5ft.	Moderately well drained	Ile	92	82
921C2	Clarion-Storden complex, 6 to 10 percent slopes, moderately eroded	0.70	1.0%		> 6.5ft.	Well drained	IIIe	87	71
112	Harps clay loam, 0 to 2 percent slopes	0.53	0.7%		> 6.5ft.	Poorly drained	IIw	90	82
Weighted Average							2.02	91.1	*n 80.7

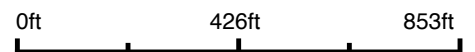
*n: The aggregation method is "Weighted Average using all components"

*c: Using Capabilities Class Dominant Condition Aggregation Method

Topography Hillshade



Source: USGS 10 meter dem
Interval(ft): 3
Min: 976.5
Max: 996.3
Range: 19.8
Average: 980.3
Standard Deviation: 1.97 ft



23-111N-29W
Nicollet County
Minnesota

Boundary Center: 44° 24' 34.35, -94° 17' 1.32

Maps Provided By:

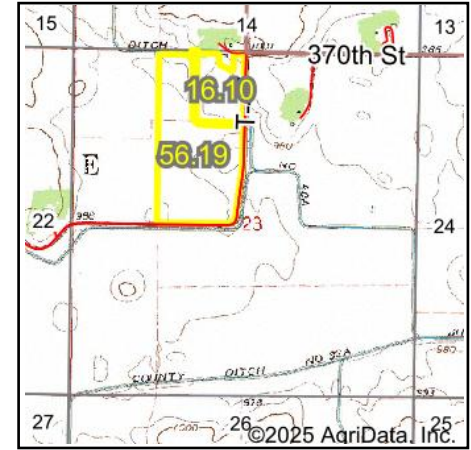
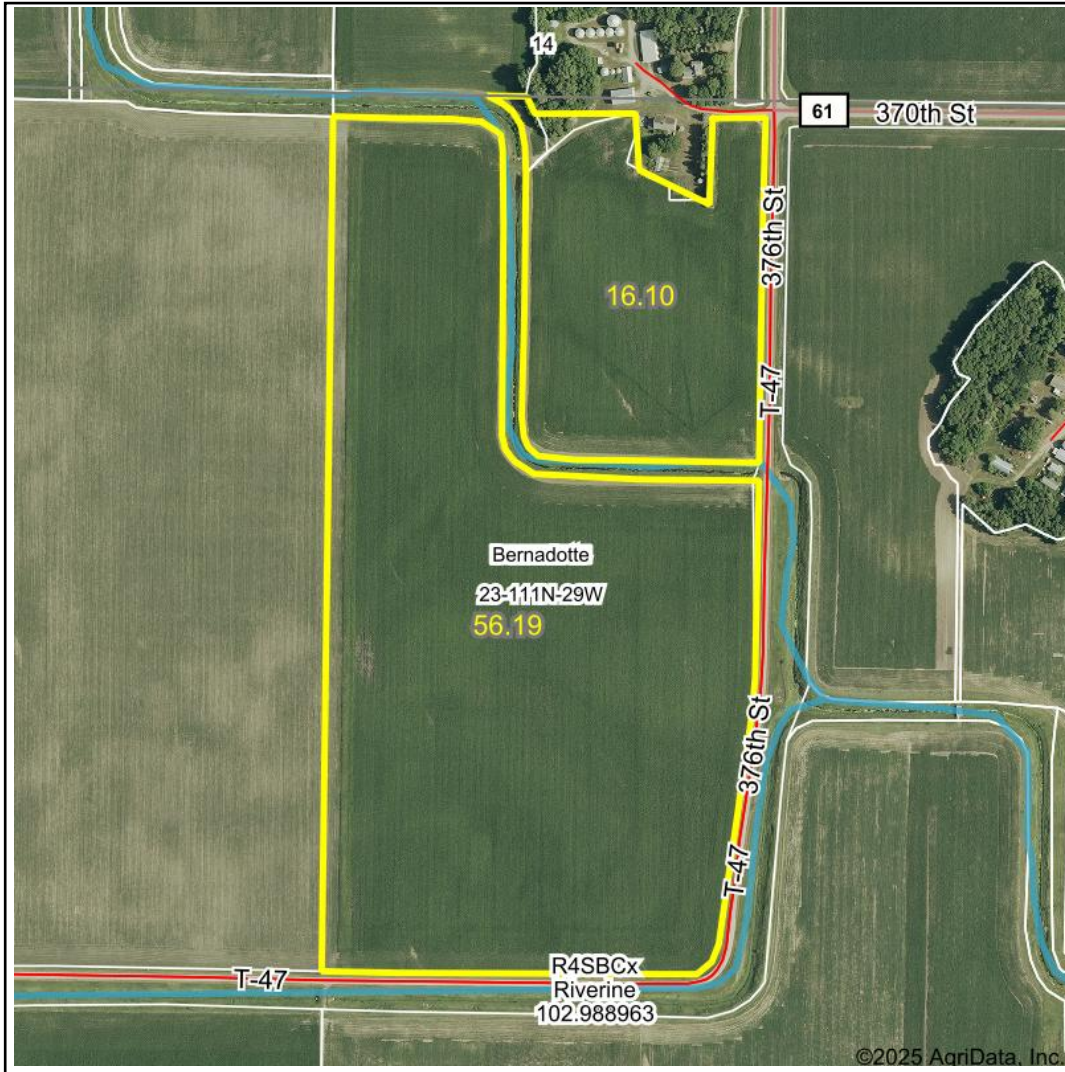


© AgriData, Inc. 2023 www.AgriDataInc.com

Field borders provided by Farm Service Agency as of 5/21/2008.

©2025 AgriData, Inc.

Wetlands Map



State: **Minnesota**
 Location: **23-111N-29W**
 County: **Nicollet**
 Township: **Bernadotte**
 Date: **10/2/2025**

Maps Provided By:

 CUSTOMIZED ONLINE MAPPING
 © AgriData, Inc. 2023 www.AgriDataInc.com



0ft 664ft 1328ft

Classification Code	Type	Acres
R4SBCx	Riverine	0.07
Total Acres		0.07

Data Source: National Wetlands Inventory website. U.S. DoI, Fish and Wildlife Service, Washington, D.C. <http://www.fws.gov/wetlands/>