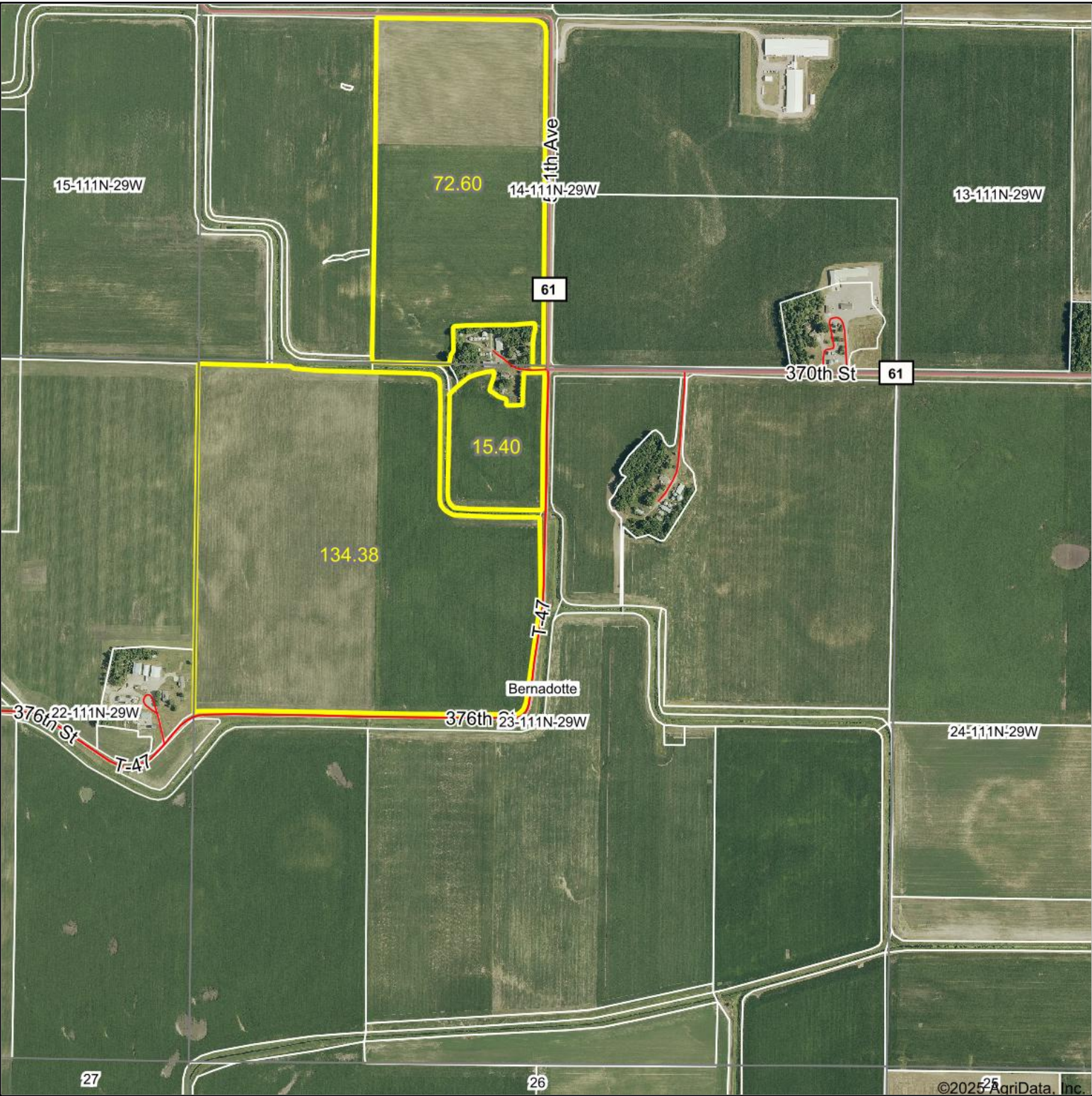
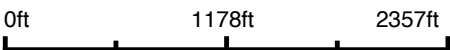


Aerial Map



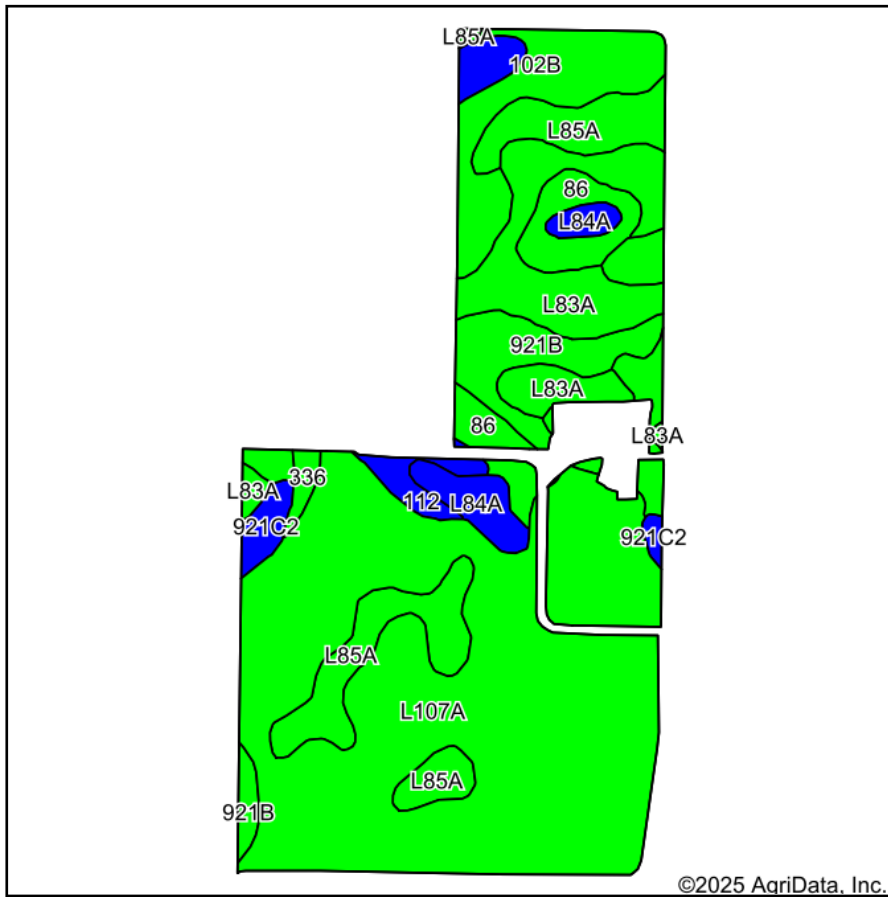
Boundary Center: 44° 24' 47.13, -94° 17' 10.38



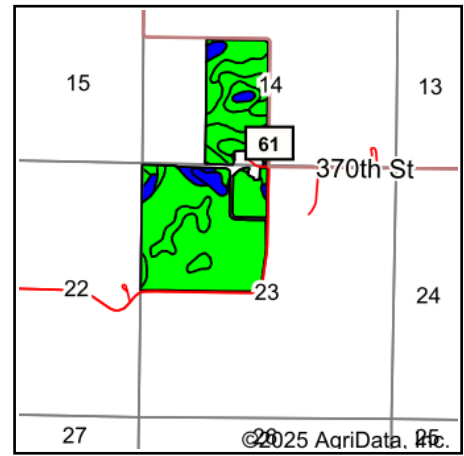
23-111N-29W
Nicollet County
Minnesota



Soils Map



Soils data provided by USDA and NRCS.



State: **Minnesota**
 County: **Nicollet**
 Location: **23-111N-29W**
 Township: **Bernadotte**
 Acres: **222.38**
 Date: **10/9/2025**

Maps Provided By:

 CUSTOMIZED ONLINE MAPPING
 © AgriData, Inc. 2023 www.AgriDataInc.com



Area Symbol: MN103, Soil Area Version: 20

Code	Soil Description	Acres	Percent of field	PI Legend	Restrictive Layer	Soil Drainage	Non-Irr Class *c	Productivity Index	*n NCCPI Overall
L107A	Canisteo-Glencoe complex, 0 to 2 percent slopes	117.40	52.8%		> 6.5ft.	Poorly drained	IIw	91	81
L85A	Nicollet clay loam, 1 to 3 percent slopes	26.45	11.9%		> 6.5ft.	Somewhat poorly drained	Iw	99	81
L83A	Webster clay loam, 0 to 2 percent slopes	22.57	10.1%		> 6.5ft.	Poorly drained	IIw	93	83
102B	Clarion loam, 2 to 6 percent slopes	16.37	7.4%		> 6.5ft.	Moderately well drained	Ile	95	83
921B	Clarion-Swanlake complex, 2 to 6 percent slopes	12.91	5.8%		> 6.5ft.	Moderately well drained	Ile	92	82
86	Canisteo clay loam, 0 to 2 percent slopes	10.18	4.6%		> 6.5ft.	Poorly drained	IIw	93	81
L84A	Glencoe clay loam, 0 to 1 percent slopes	6.23	2.8%		> 6.5ft.	Very poorly drained	IIIw	86	77
921C2	Clarion-Storden complex, 6 to 10 percent slopes, moderately eroded	5.88	2.6%		> 6.5ft.	Well drained	IIle	87	71
112	Harps clay loam, 0 to 2 percent slopes	3.01	1.4%		> 6.5ft.	Poorly drained	IIw	90	82
336	Delft clay loam, 0 to 2 percent slopes	1.38	0.6%		> 6.5ft.	Poorly drained	IIw	94	79
Weighted Average							1.94	92.4	*n 81

*n: The aggregation method is "Weighted Average using all components"

*c: Using Capabilities Class Dominant Condition Aggregation Method

Soils data provided by USDA and NRCS.