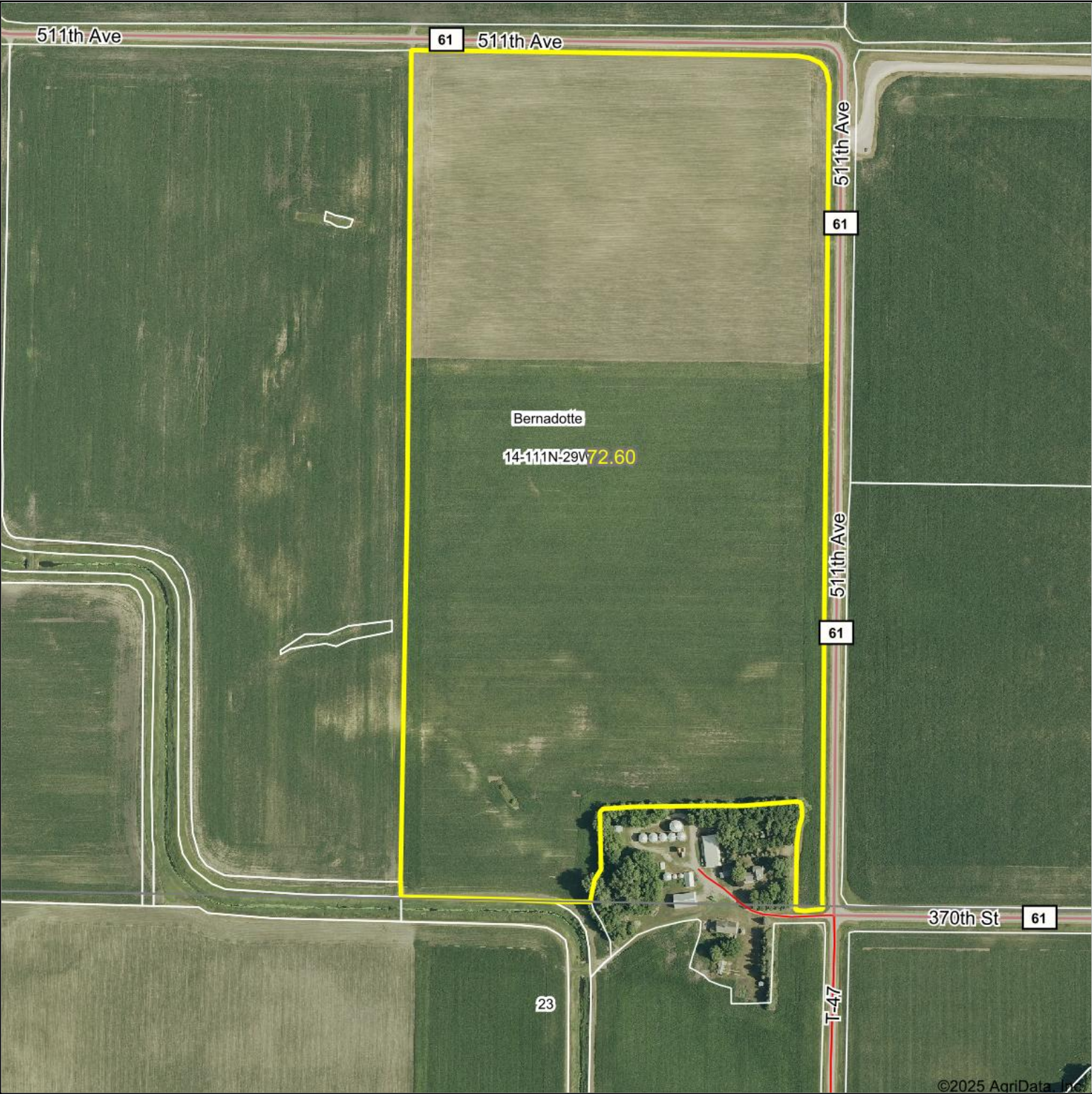
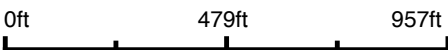


Aerial Map



Boundary Center: 44° 25' 0.2, -94° 17' 1.45



14-111N-29W
Nicollet County
Minnesota

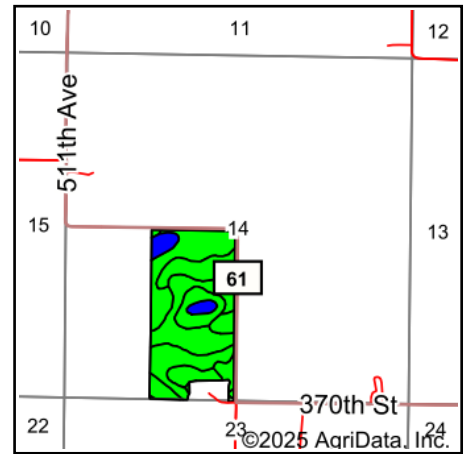
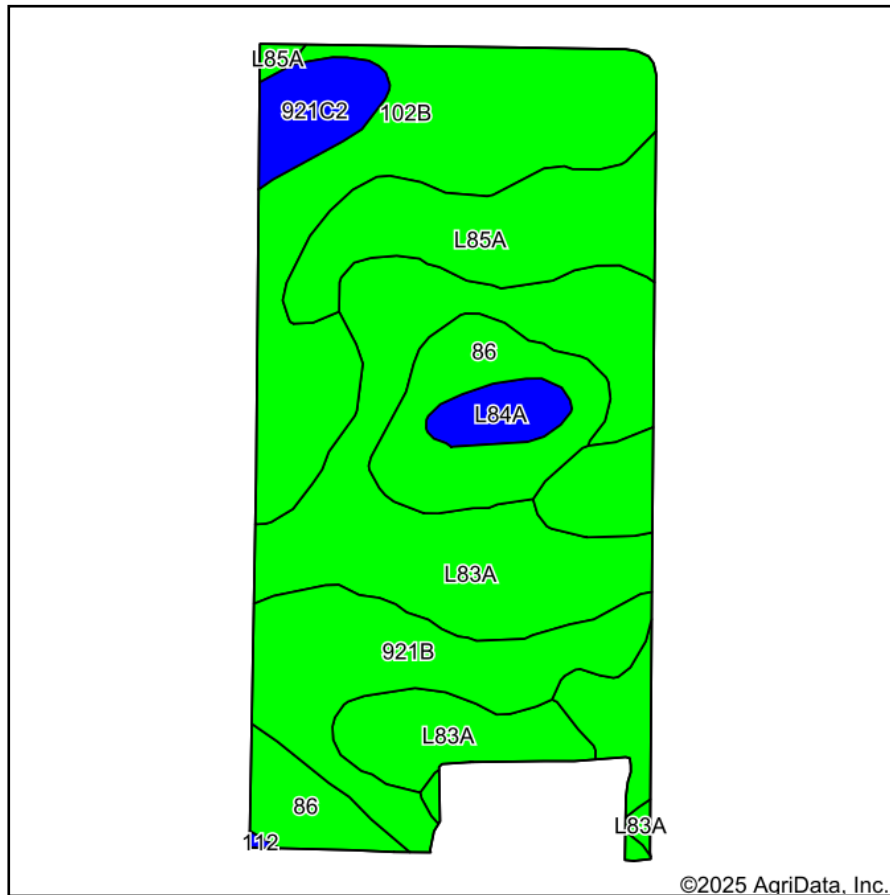


Maps Provided By:
surety
CUSTOMIZED ONLINE MAPPING
© AgriData, Inc. 2023 www.AgriDataInc.com

10/2/2025

Field borders provided by Farm Service Agency as of 5/21/2008.

Soils Map



State: **Minnesota**
 County: **Nicollet**
 Location: **14-111N-29W**
 Township: **Bernadotte**
 Acres: **72.6**
 Date: **10/2/2025**

Maps Provided By:

 CUSTOMIZED ONLINE MAPPING
 © AgriData, Inc. 2023 www.AgriDataInc.com



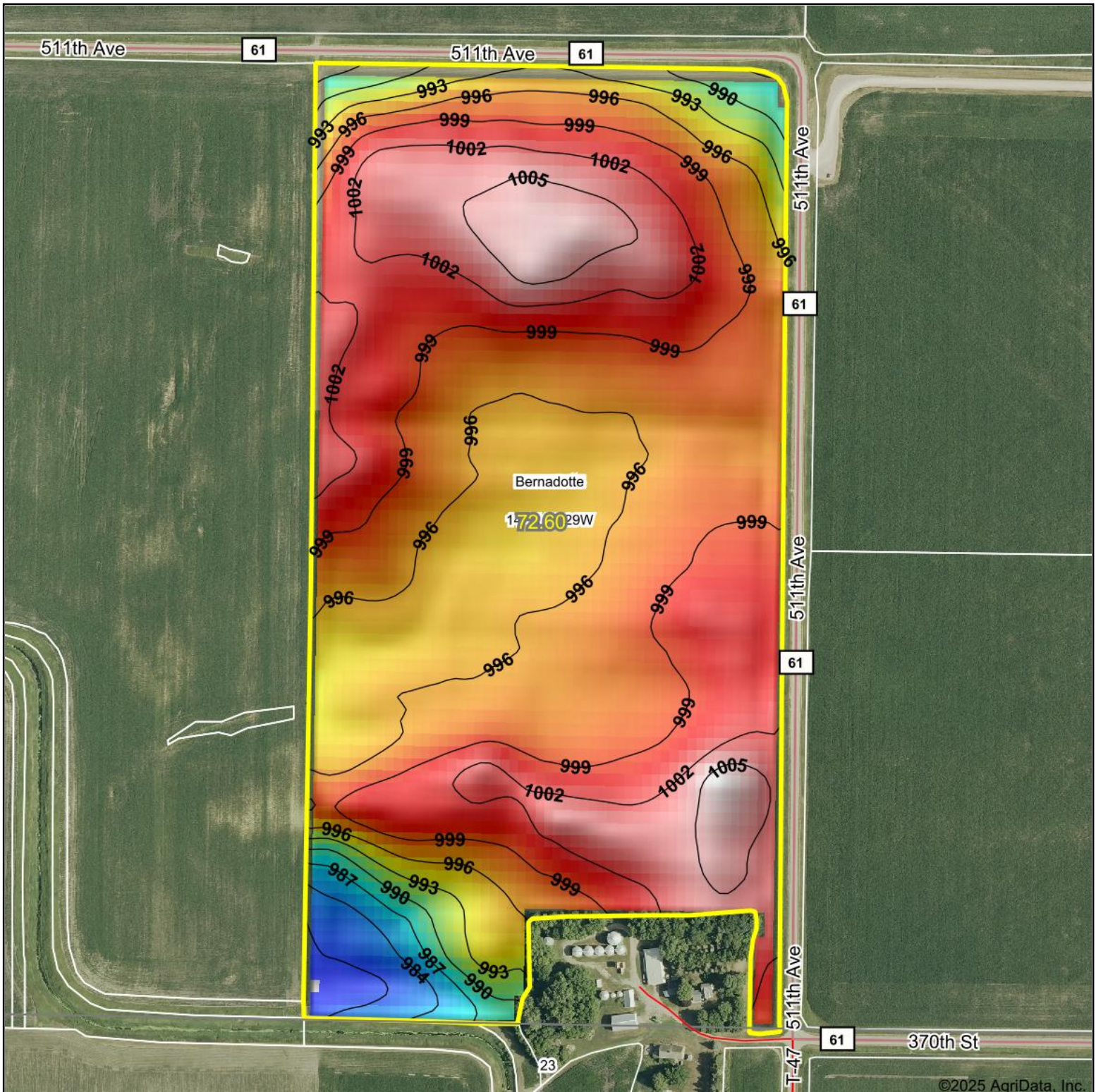
Area Symbol: MN103, Soil Area Version: 20

Code	Soil Description	Acres	Percent of field	PI Legend	Restrictive Layer	Soil Drainage	Non-Irr Class *c	Productivity Index	*n NCCPI Overall
L83A	Webster clay loam, 0 to 2 percent slopes	21.69	30.0%		> 6.5ft.	Poorly drained	Ilw	93	83
102B	Clarion loam, 2 to 6 percent slopes	15.13	20.8%		> 6.5ft.	Moderately well drained	Ile	95	83
L85A	Nicollet clay loam, 1 to 3 percent slopes	12.92	17.8%		> 6.5ft.	Somewhat poorly drained	Iw	99	81
921B	Clarion-Swanlake complex, 2 to 6 percent slopes	9.90	13.6%		> 6.5ft.	Moderately well drained	Ile	92	82
86	Canisteo clay loam, 0 to 2 percent slopes	8.52	11.7%		> 6.5ft.	Poorly drained	Ilw	93	81
921C2	Clarion-Storden complex, 6 to 10 percent slopes, moderately eroded	2.63	3.6%		> 6.5ft.	Well drained	Illle	87	71
L84A	Glencoe clay loam, 0 to 1 percent slopes	1.75	2.4%		> 6.5ft.	Very poorly drained	Illw	86	77
112	Harps clay loam, 0 to 2 percent slopes	0.06	0.1%		> 6.5ft.	Poorly drained	Ilw	90	82
Weighted Average							1.88	94	*n 81.7

*n: The aggregation method is "Weighted Average using all components"

*c: Using Capabilities Class Dominant Condition Aggregation Method

Topography Hillshade



Source: USGS 10 meter dem

Interval(ft): 3

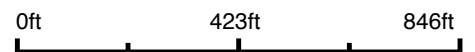
Min: 979.6

Max: 1,007.6

Range: 28.0

Average: 998.2

Standard Deviation: 4.79 ft



14-111N-29W
Nicollet County
Minnesota

Boundary Center: 44° 25' 0.2, -94° 17' 1.45

Maps Provided By:



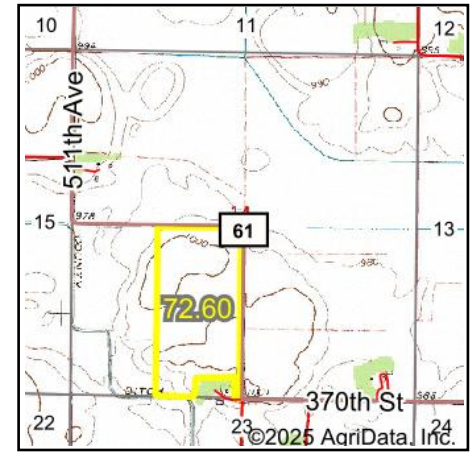
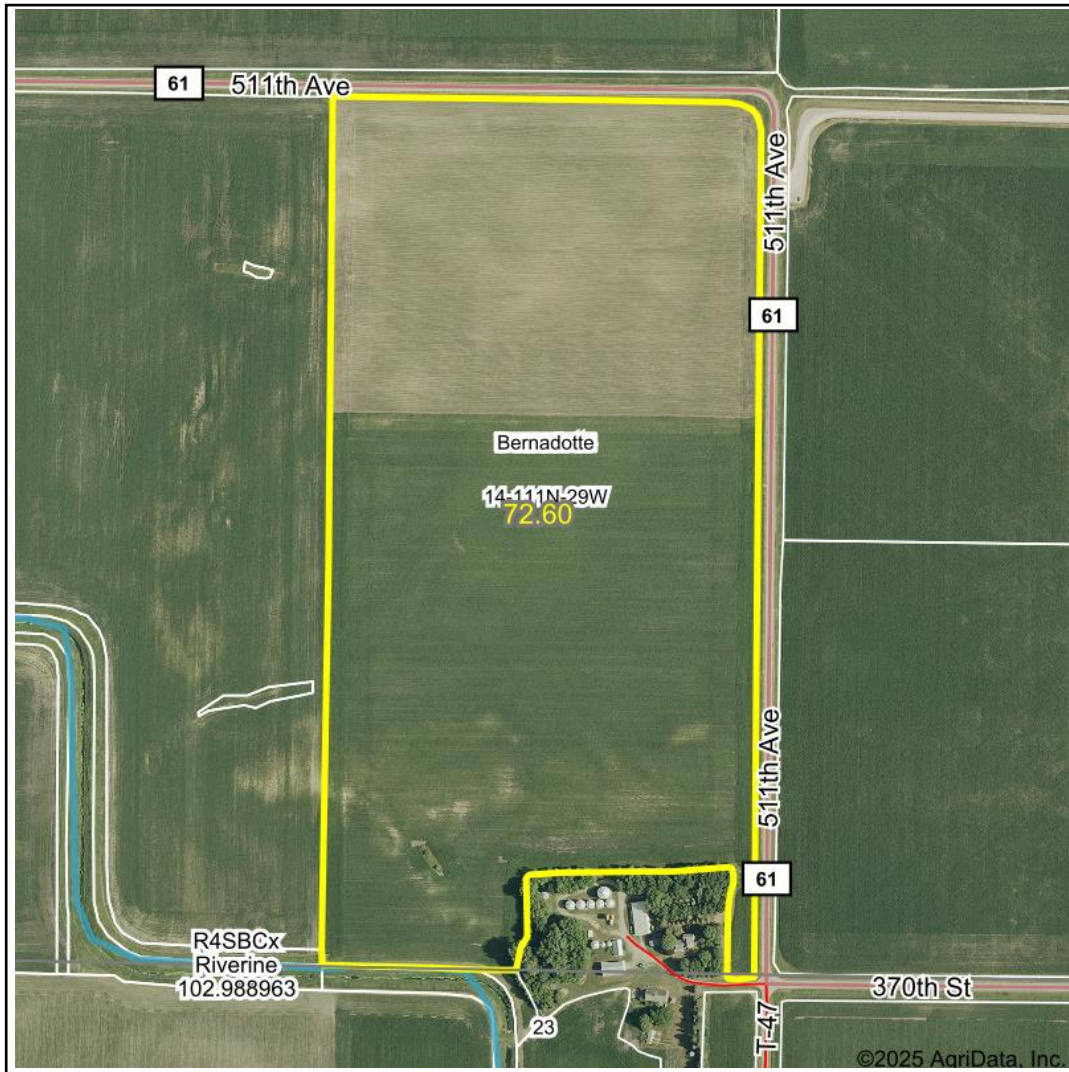
© AgriData, Inc. 2023

www.AgriDataInc.com

Field borders provided by Farm Service Agency as of 5/21/2008.

©2025 AgriData, Inc.

Wetlands Map



State: **Minnesota**
 Location: **14-111N-29W**
 County: **Nicollet**
 Township: **Bernadotte**
 Date: **10/2/2025**

Maps Provided By:

 CUSTOMIZED ONLINE MAPPING
 © AgriData, Inc. 2023 www.AgriDataInc.com



0ft 659ft 1318ft

Classification Code	Type	Acres
R4SBCx	Riverine	0.07
	Total Acres	0.07

Data Source: National Wetlands Inventory website. U.S. DoI, Fish and Wildlife Service, Washington, D.C. <http://www.fws.gov/wetlands/>