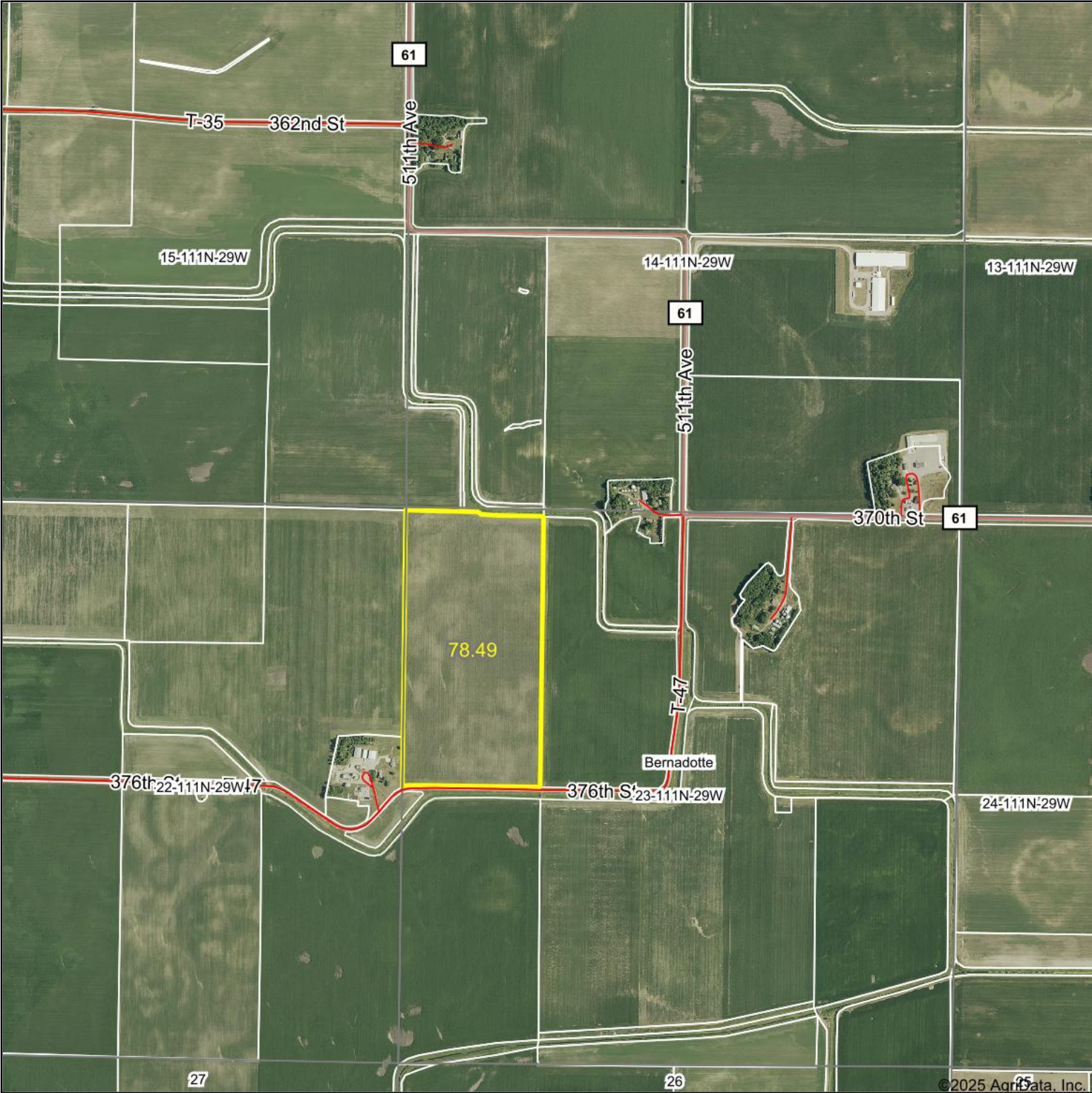


Aerial Map



Boundary Center: 44° 24' 34.13, -94° 17' 19.33



23-111N-29W
Nicollet County
Minnesota

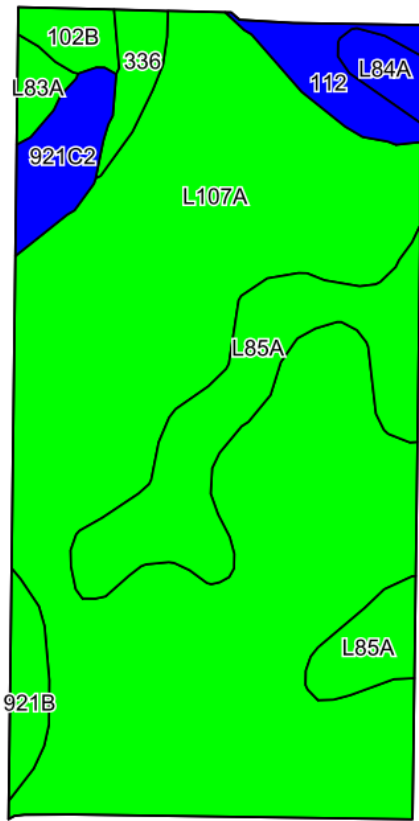


Maps Provided By:
surety
CUSTOMIZED ONLINE MAPPING
© AgriData, Inc. 2023 www.AgriDataInc.com

10/2/2025

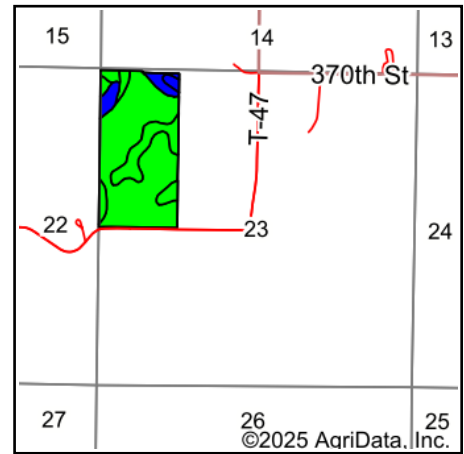
Field borders provided by Farm Service Agency as of 5/21/2008.

Soils Map



©2025 AgriData, Inc.

Soils data provided by USDA and NRCS.



State: **Minnesota**
 County: **Nicollet**
 Location: **23-111N-29W**
 Township: **Bernadotte**
 Acres: **78.49**
 Date: **10/2/2025**

Maps Provided By:

 CUSTOMIZED ONLINE MAPPING
 © AgriData, Inc. 2023 www.AgriDataInc.com



Area Symbol: MN103, Soil Area Version: 20

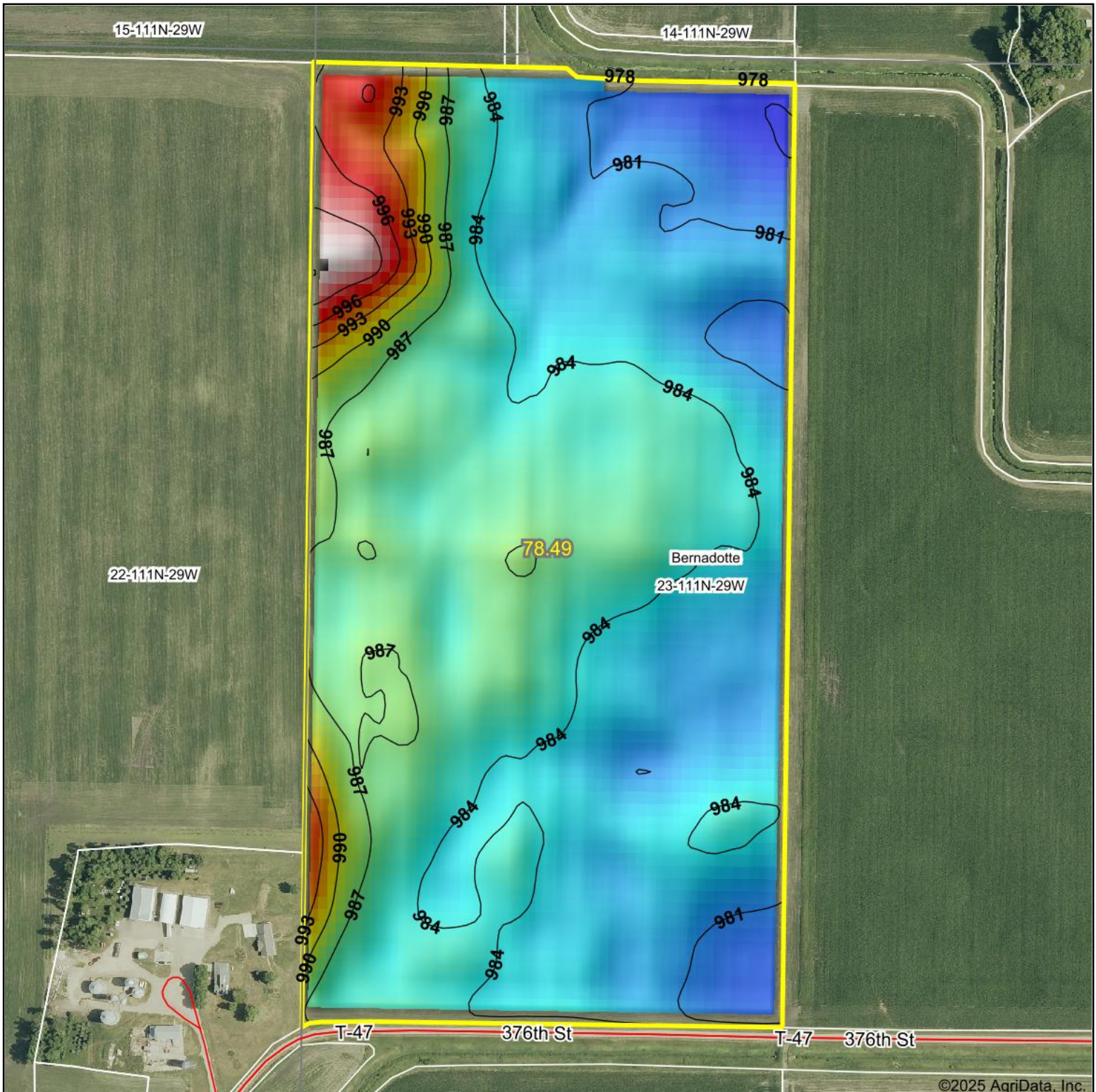
Code	Soil Description	Acres	Percent of field	PI Legend	Restrictive Layer	Soil Drainage	Non-Irr Class *c	Productivity Index	*n NCCPI Overall
L107A	Canisteo-Glencoe complex, 0 to 2 percent slopes	56.18	71.5%		> 6.5ft.	Poorly drained	Ilw	91	81
L85A	Nicollet clay loam, 1 to 3 percent slopes	10.99	14.0%		> 6.5ft.	Somewhat poorly drained	Iw	99	81
921C2	Clarion-Storden complex, 6 to 10 percent slopes, moderately eroded	2.58	3.3%		> 6.5ft.	Well drained	Ille	87	71
112	Harps clay loam, 0 to 2 percent slopes	2.45	3.1%		> 6.5ft.	Poorly drained	Ilw	90	82
921B	Clarion-Swanlake complex, 2 to 6 percent slopes	1.63	2.1%		> 6.5ft.	Moderately well drained	Ile	92	82
336	Delft clay loam, 0 to 2 percent slopes	1.39	1.8%		> 6.5ft.	Poorly drained	Ilw	94	79
102B	Clarion loam, 2 to 6 percent slopes	1.25	1.6%		> 6.5ft.	Moderately well drained	Ile	95	83
L84A	Glencoe clay loam, 0 to 1 percent slopes	1.14	1.5%		> 6.5ft.	Very poorly drained	Illw	86	77
L83A	Webster clay loam, 0 to 2 percent slopes	0.88	1.1%		> 6.5ft.	Poorly drained	Ilw	93	83
Weighted Average							1.91	92	*n 80.7

*n: The aggregation method is "Weighted Average using all components"

*c: Using Capabilities Class Dominant Condition Aggregation Method

Soils data provided by USDA and NRCS.

Topography Hillshade



©2025 AgriData, Inc.



Source: USGS 10 meter dem
Interval(ft): 3
Min: 977.8
Max: 1,001.7
Range: 23.9
Average: 984.7
Standard Deviation: 3.48 ft



23-111N-29W
Nicollet County
Minnesota

Boundary Center: 44° 24' 34.13, -94° 17' 19.33

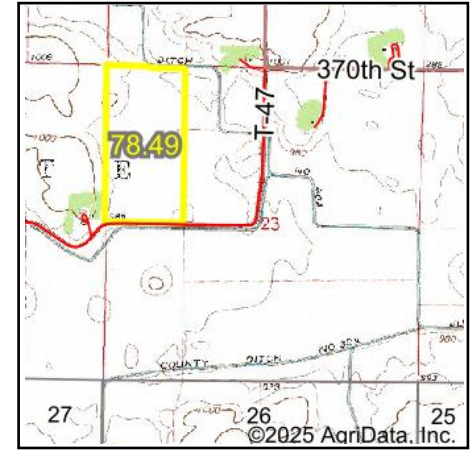
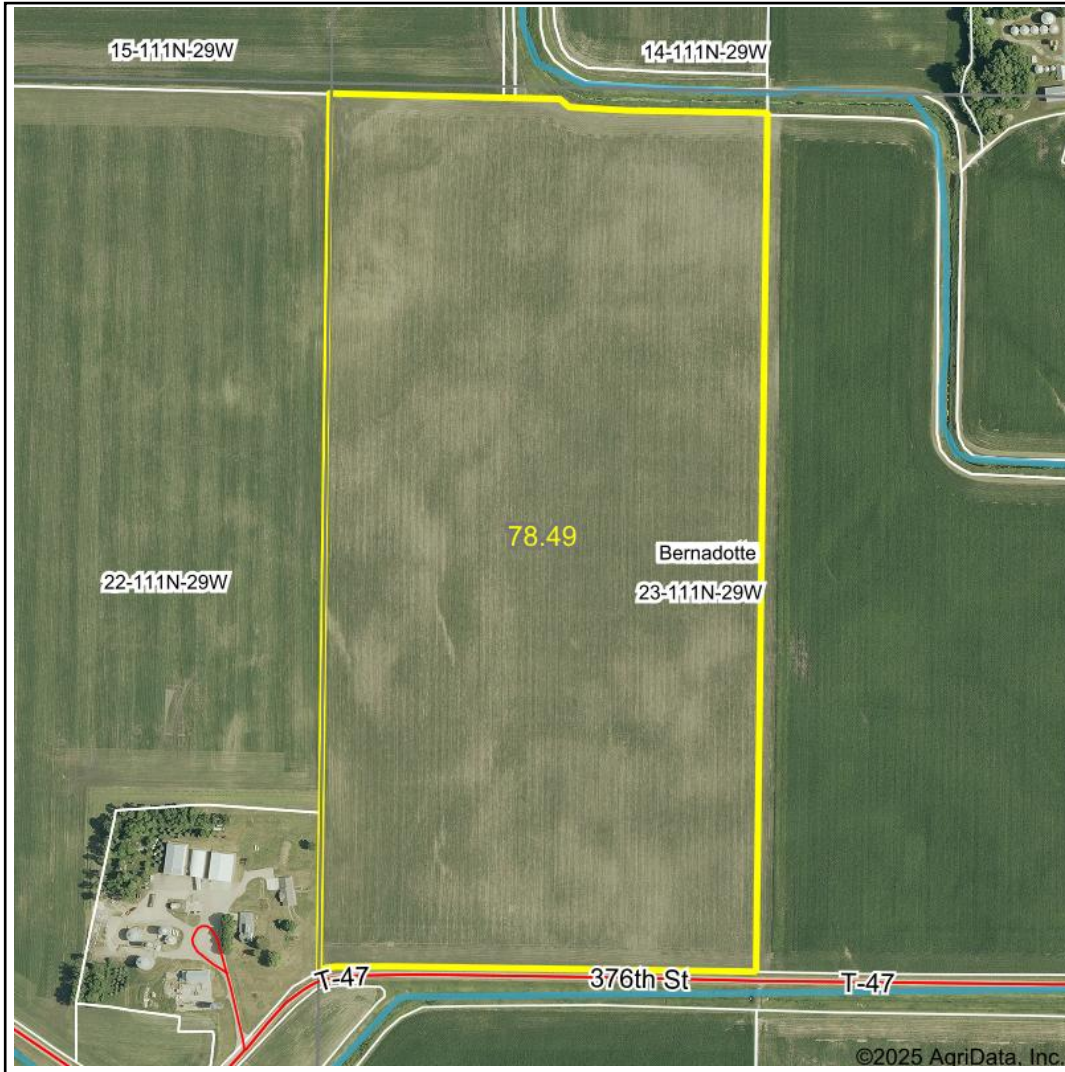
Maps Provided By:



© AgriData, Inc. 2023 www.AgriDataInc.com

Field borders provided by Farm Service Agency as of 5/21/2008.

Wetlands Map



State: **Minnesota**
 Location: **23-111N-29W**
 County: **Nicollet**
 Township: **Bernadotte**
 Date: **10/2/2025**

Maps Provided By:



Classification Code	Type	Acres
	Total Acres	0.00

Data Source: National Wetlands Inventory website. U.S. DoI, Fish and Wildlife Service, Washington, D.C. <http://www.fws.gov/wetlands/>