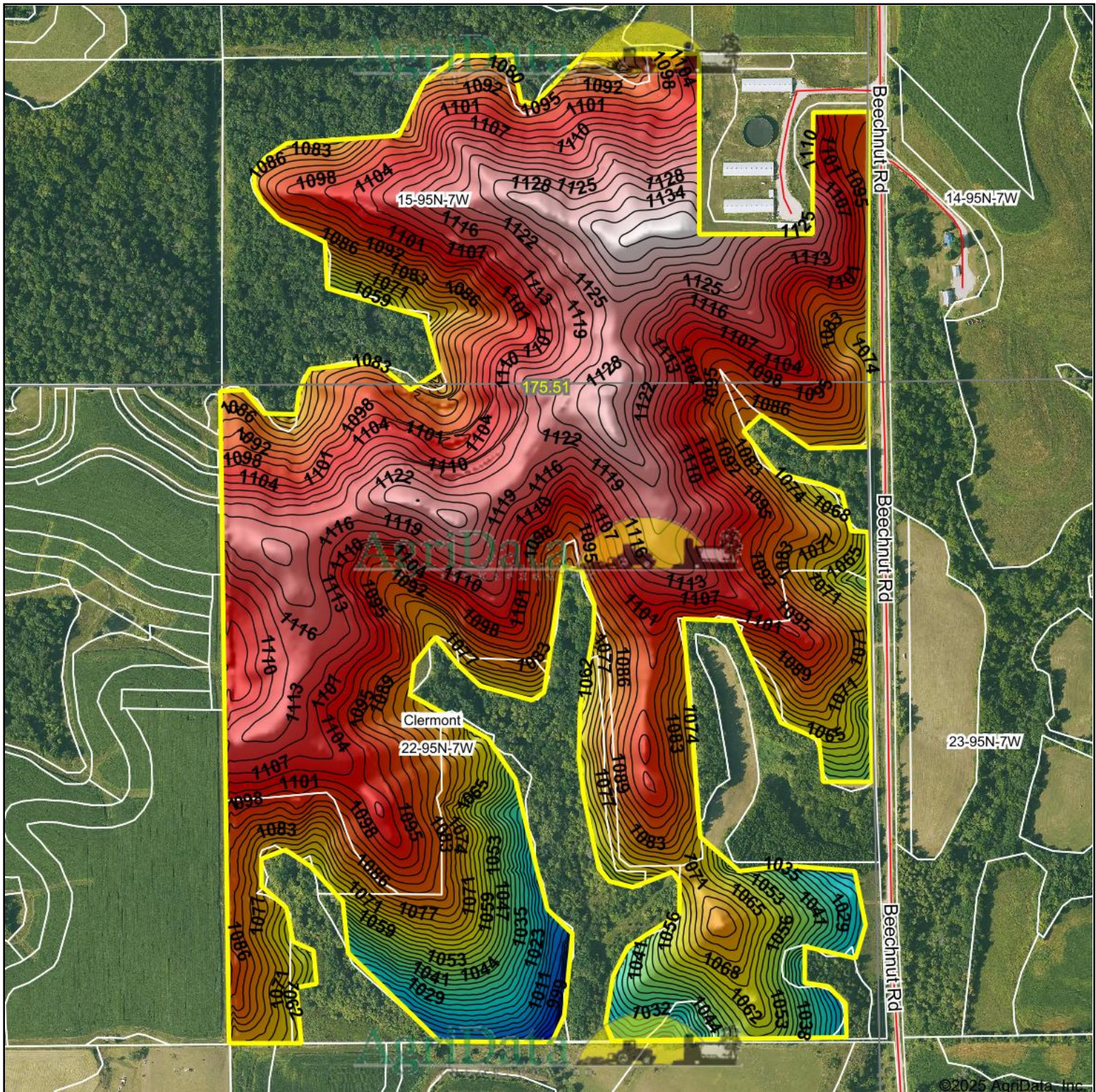


Topography Hillshade



Source: USGS 3 meter dem

Interval(ft): 3

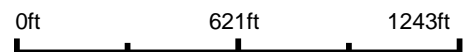
Min: 982.9

Max: 1,142.8

Range: 159.9

Average: 1,091.7

Standard Deviation: 27.59 ft



6/27/2025

22-95N-7W
Fayette County
Iowa

Boundary Center: 43° 2' 4.85, -91° 39' 1.13

Maps Provided By:



© AgriData, Inc. 2023

www.AgrIDataInc.com

Field borders provided by Farm Service Agency as of 5/21/2008.

©2025 AgriData, Inc.