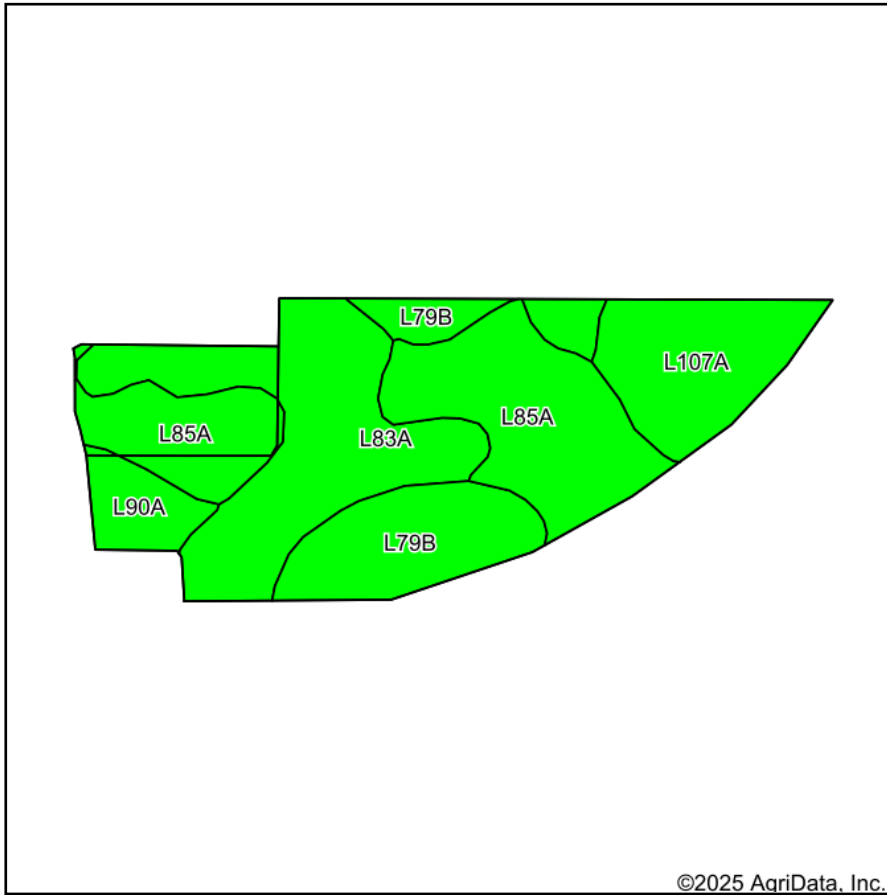
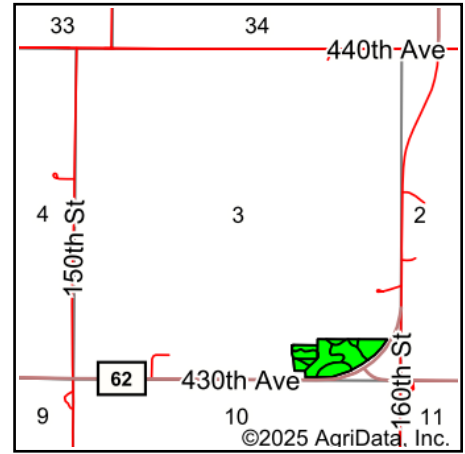


Soils Map



Soils data provided by USDA and NRCS.



State: **Minnesota**
 County: **Waseca**
 Location: **3-108N-22W**
 Township: **Blooming Grove**
 Acres: **15.5**
 Date: **10/9/2025**

Maps Provided By:

 CUSTOMIZED ONLINE MAPPING
 © AgriData, Inc. 2023 www.AgriDataInc.com



Area Symbol: MN161, Soil Area Version: 19

Code	Soil Description	Acres	Percent of field	PI Legend	Restrictive Layer	Soil Drainage	Non-Irr Class *c	Productivity Index	*n NCCPI Overall
L83A	Webster clay loam, 0 to 2 percent slopes	4.89	31.6%		> 6.5ft.	Poorly drained	IIw	93	83
L85A	Nicollet clay loam, 1 to 3 percent slopes	4.89	31.5%		> 6.5ft.	Somewhat poorly drained	Iw	99	81
L79B	Clarion loam, 2 to 6 percent slopes	2.55	16.5%		> 6.5ft.	Moderately well drained	Ile	95	83
L107A	Canisteo-Glencoe complex, 0 to 2 percent slopes	2.33	15.0%		> 6.5ft.	Poorly drained	IIw	91	81
L90A	Le Sueur loam, 1 to 3 percent slopes	0.84	5.4%		> 6.5ft.	Somewhat poorly drained	Iw	97	90
Weighted Average							1.63	95.1	*n 82.4

*n: The aggregation method is "Weighted Average using all components"

*c: Using Capabilities Class Dominant Condition Aggregation Method

Soils data provided by USDA and NRCS.