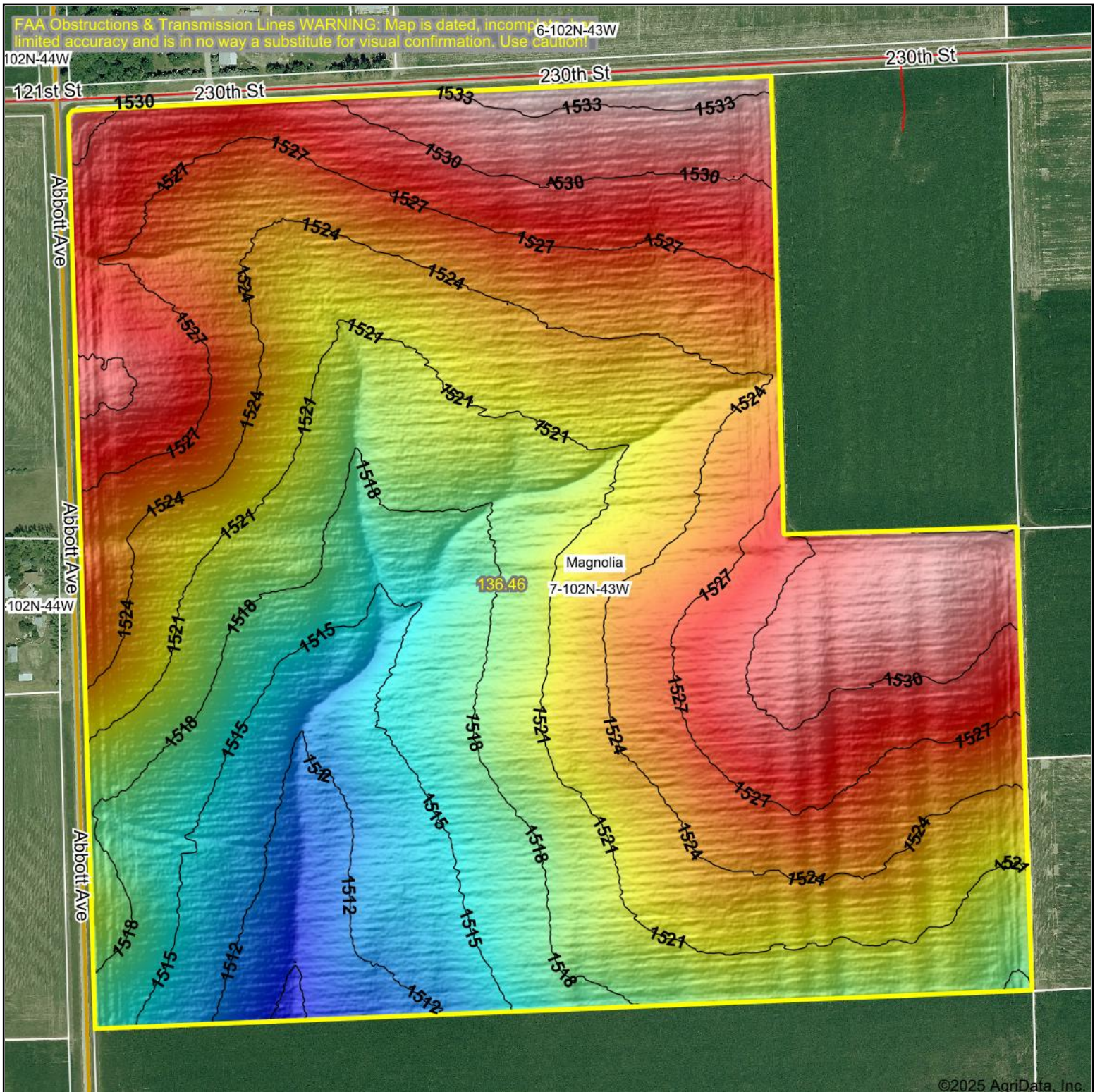


Topography Hillshade



Source: USGS 1 meter dem

Interval(ft): 3

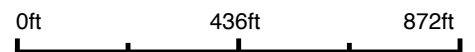
Min: 1,508.5

Max: 1,534.7

Range: 26.2

Average: 1,522.5

Standard Deviation: 5.68 ft



7-102N-43W
Nobles County
Minnesota

Maps Provided By:



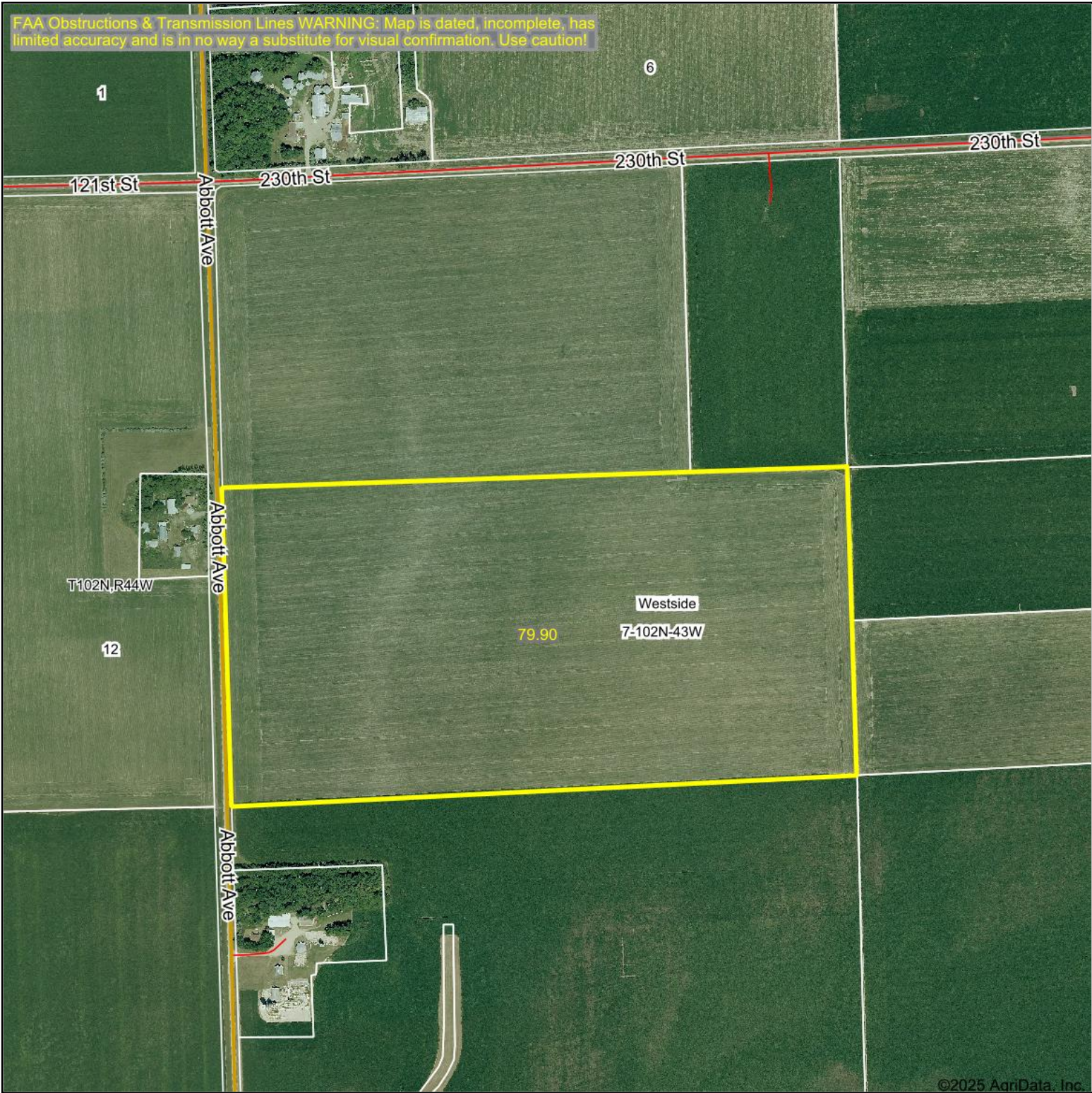
© AgriData, Inc. 2023

www.AgriDataInc.com

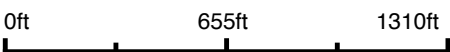
Field borders provided by Farm Service Agency as of 5/21/2008.

Boundary Center: 43° 39' 21.95, -96° 2' 53.7

Aerial Map



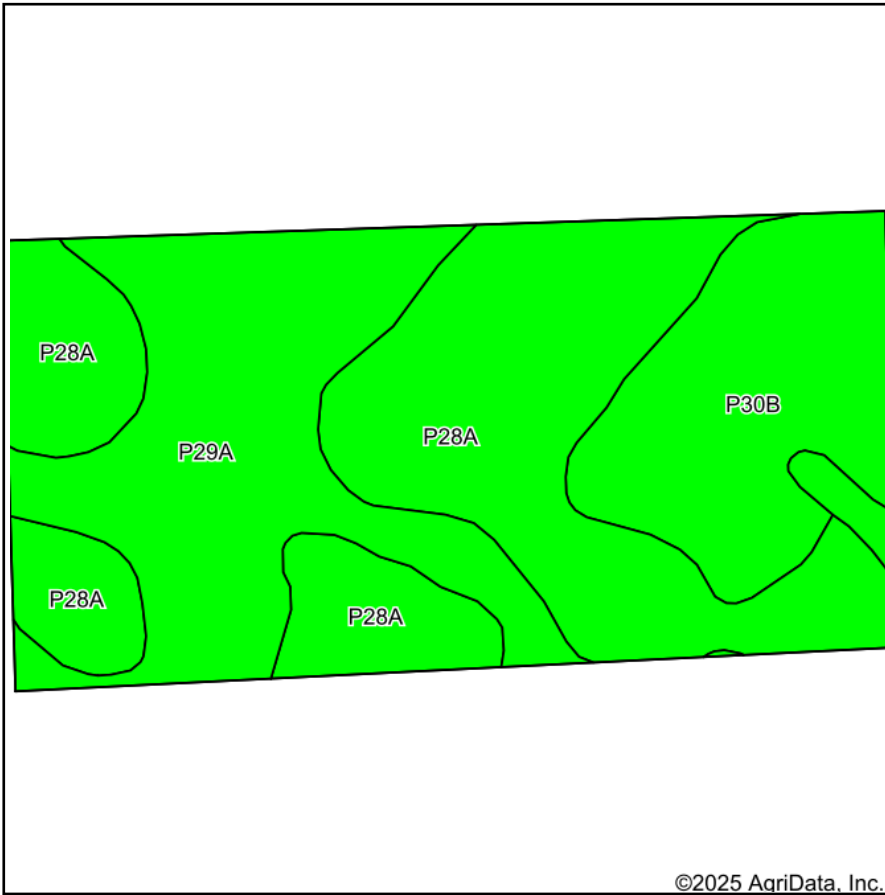
Boundary Center: 43° 39' 15.48, -96° 2' 53.69



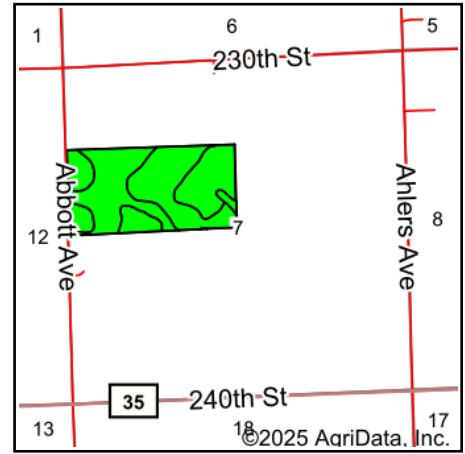
7-102N-43W
Nobles County
Minnesota



Soils Map



Soils data provided by USDA and NRCS.



State: **Minnesota**
 County: **Nobles**
 Location: **7-102N-43W**
 Township: **Westside**
 Acres: **79.9**
 Date: **9/16/2025**

Maps Provided By:

 CUSTOMIZED ONLINE MAPPING
 © AgriData, Inc. 2023 www.AgriDataInc.com



Area Symbol: MN105, Soil Area Version: 23

Code	Soil Description	Acres	Percent of field	PI Legend	Non-Irr Class *c	Productivity Index
P28A	Ransom silty clay loam, 1 to 3 percent slopes	37.25	46.6%		Ie	99
P29A	Rushmore silty clay loam, 0 to 2 percent slopes	26.07	32.6%		IIw	94
P30B	Sac silty clay loam, loam substratum, 2 to 5 percent slopes	16.58	20.8%		Ile	95
Weighted Average					1.53	96.5

*c: Using Capabilities Class Dominant Condition Aggregation Method

Soils data provided by USDA and NRCS.

Topography Contours

FAA Obstructions & Transmission Lines WARNING: Map is dated, incomplete, has limited accuracy and is in no way a substitute for visual confirmation. Use caution!



©2025 AgriData, Inc.

Source: USGS 1 meter dem

Interval(ft): 3.0

Min: 1,508.4

Max: 1,533.7

Range: 25.3

Average: 1,520.5

Standard Deviation: 5.97 ft

0ft 451ft 903ft



9/16/2025

7-102N-43W
Nobles County
Minnesota

Boundary Center: 43° 39' 15.48, -96° 2' 53.69

Maps Provided By:



© AgriData, Inc. 2023

www.AgriDataInc.com

Field borders provided by Farm Service Agency as of 5/21/2008.