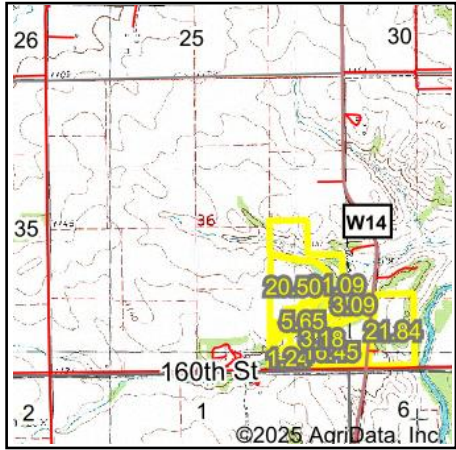
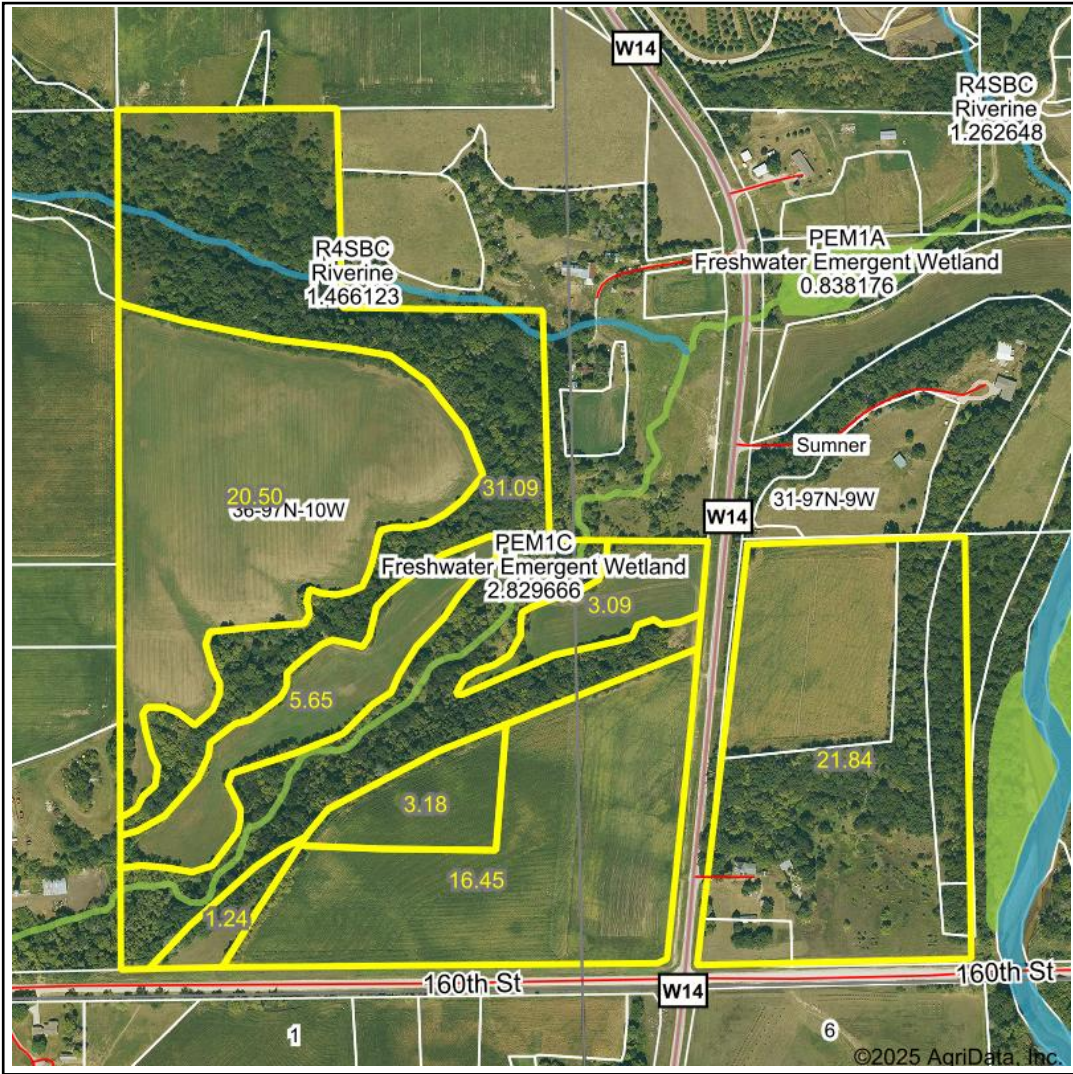


# Wetlands Map



State: **Iowa**  
 Location: **36-97N-10W**  
 County: **Winneshiek**  
 Township: **Sumner**  
 Date: **9/25/2025**

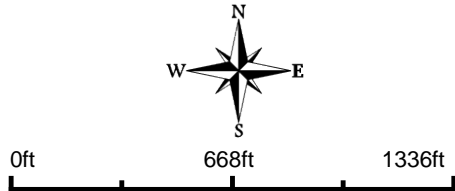
**HIGH POINT**  
LAND COMPANY

Maps Provided By:

**surety**  
CUSTOMIZED ONLINE MAPPING

© AgriData, Inc. 2023

www.AgriDataInc.com



	Classification Code	Type	Acres
	PEM1C	Freshwater Emergent Wetland	0.96
	R4SBC	Riverine	0.39
	Total Acres		1.35

Data Source: National Wetlands Inventory website. U.S. DoI, Fish and Wildlife Service, Washington, D.C. <http://www.fws.gov/wetlands/>