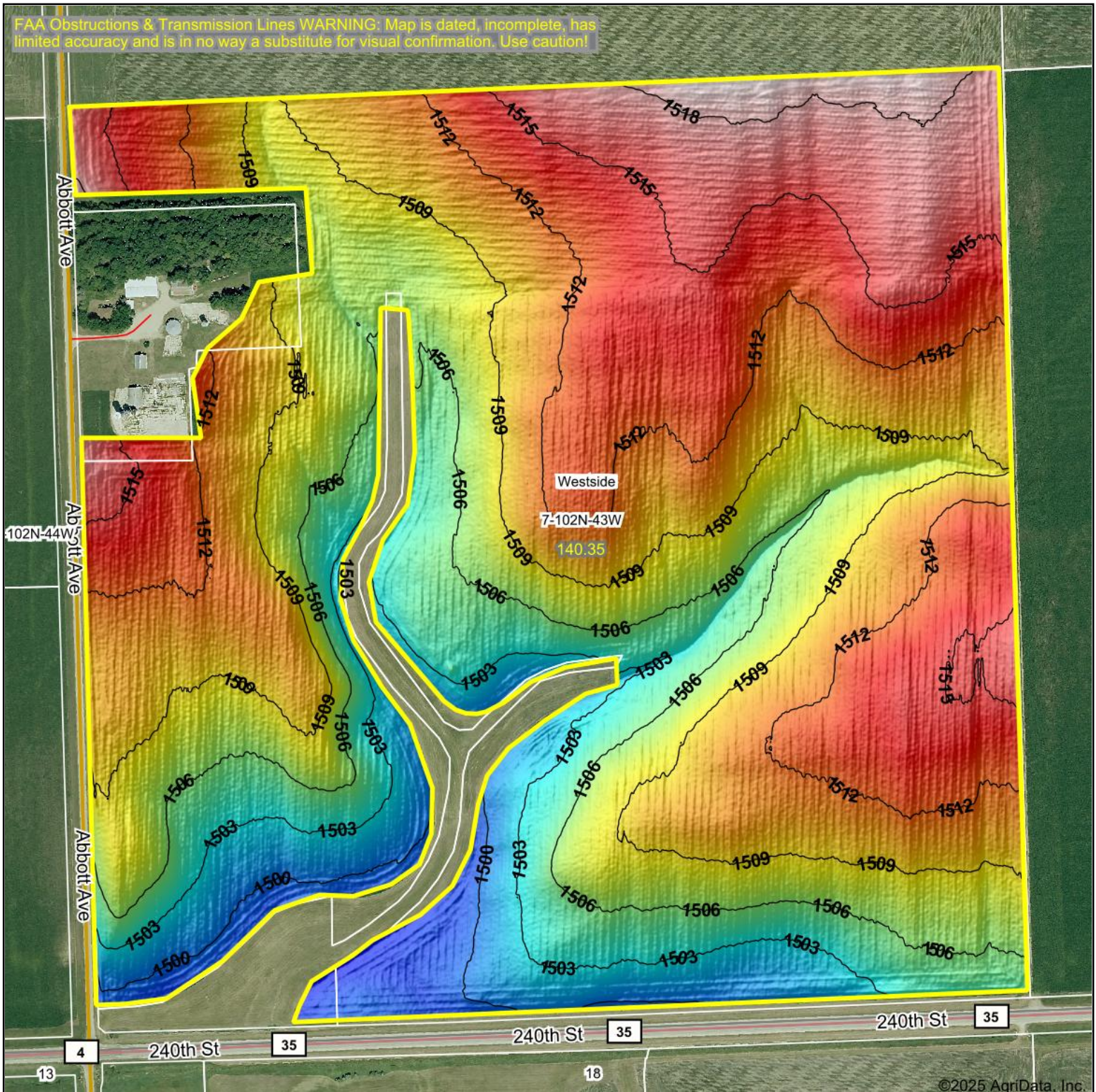


Topography Hillshade

FAA Obstructions & Transmission Lines WARNING: Map is dated, incomplete, has limited accuracy and is in no way a substitute for visual confirmation. Use caution!



©2025 AgriData, Inc.



Source: USGS 1 meter dem

Interval(ft): 3

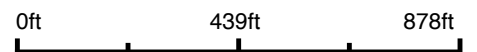
Min: 1,497.6

Max: 1,519.5

Range: 21.9

Average: 1,509.3

Standard Deviation: 4.63 ft



7/28/2025

7-102N-43W
Nobles County
Minnesota

Boundary Center: 43° 38' 56.37, -96° 2' 53.91

Maps Provided By:



© AgriData, Inc. 2023

www.AgriDataInc.com

Field borders provided by Farm Service Agency as of 5/21/2008.

Aerial Map

FAA Obstructions & Transmission Lines WARNING: Map is dated, incomplete, has limited accuracy and is in no way a substitute for visual confirmation. Use caution!



©2025 AgriData, Inc.

Boundary Center: 43° 38' 56.26, -96° 2' 53.8

7-102N-43W
Nobles County
Minnesota



9/16/2025

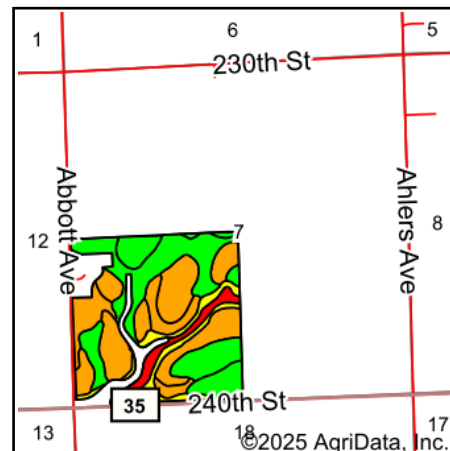
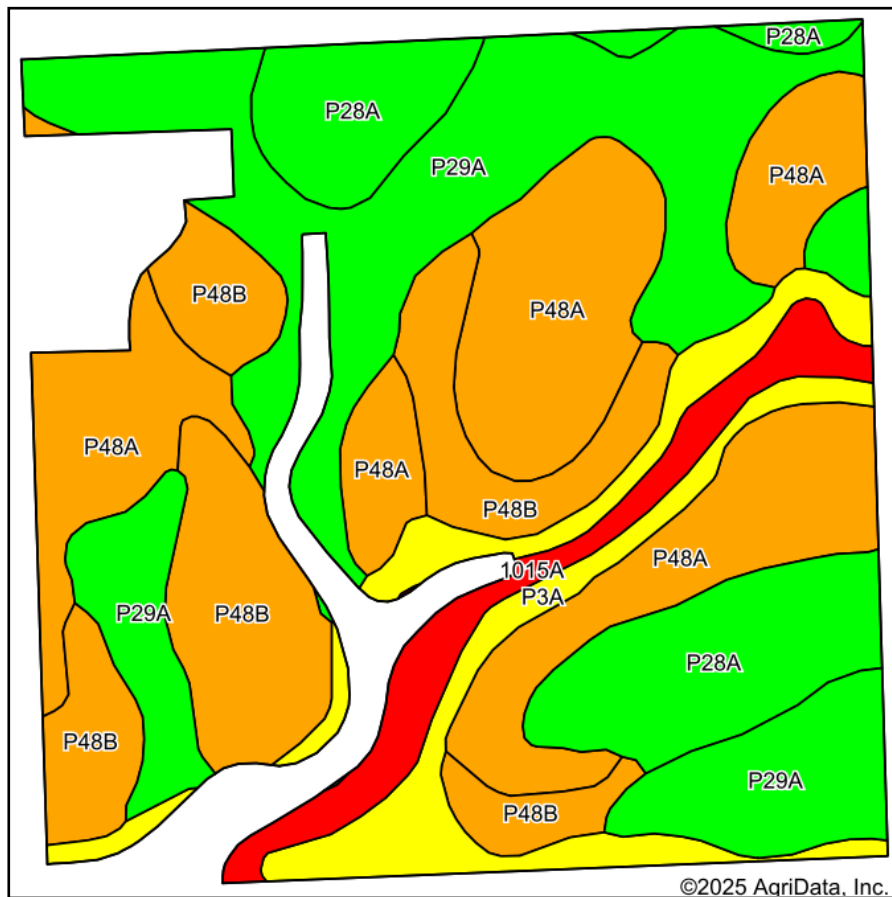
Maps Provided By:



© AgriData, Inc. 2023 www.AgriDataInc.com

Field borders provided by Farm Service Agency as of 5/21/2008.

Soils Map



State: **Minnesota**
 County: **Nobles**
 Location: **7-102N-43W**
 Township: **Westside**
 Acres: **141.15**
 Date: **9/16/2025**

Maps Provided By:

 CUSTOMIZED ONLINE MAPPING
 © AgriData, Inc. 2023 www.AgriDataInc.com



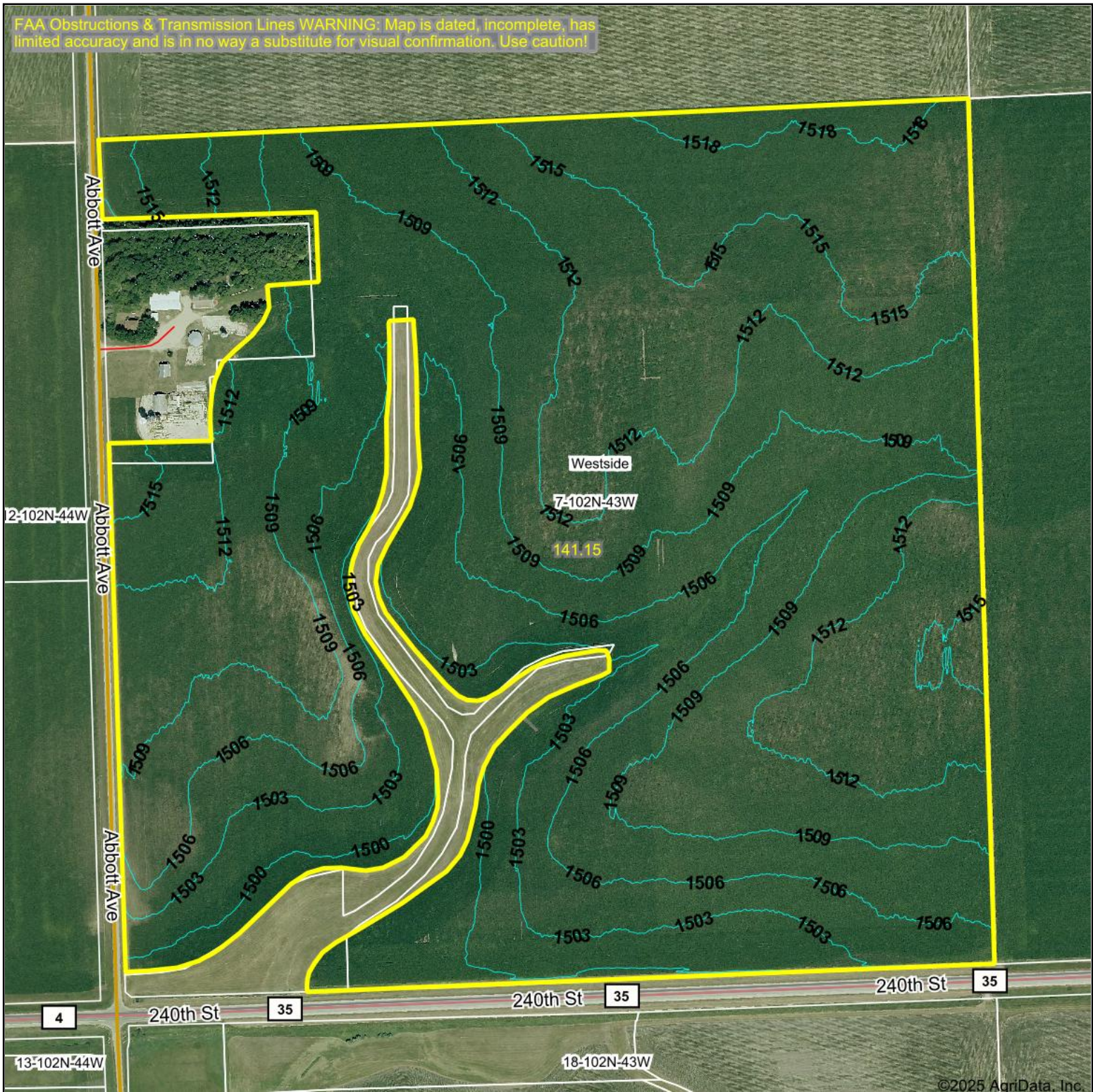
Area Symbol: MN105, Soil Area Version: 23

Code	Soil Description	Acres	Percent of field	PI Legend	Non-Irr Class *c	Productivity Index
P29A	Rushmore silty clay loam, 0 to 2 percent slopes	40.36	28.6%		IIw	94
P48A	Allendorf silty clay loam, 0 to 2 percent slopes	37.84	26.8%		IIs	75
P48B	Allendorf silty clay loam, 2 to 6 percent slopes	24.48	17.3%		Ile	74
P28A	Ransom silty clay loam, 1 to 3 percent slopes	17.49	12.4%		Ie	99
P3A	Biscay silty clay loam, 0 to 2 percent slopes, occasionally flooded	13.71	9.7%		IIw	64
1015A	Havelock clay loam, 0 to 2 percent slopes, frequently flooded	7.27	5.2%		Vw	20
Weighted Average					2.03	79.3

*c: Using Capabilities Class Dominant Condition Aggregation Method

Topography Contours

FAA Obstructions & Transmission Lines WARNING: Map is dated, incomplete, has limited accuracy and is in no way a substitute for visual confirmation. Use caution!



Source: USGS 1 meter dem

Interval(ft): 3.0

Min: 1,497.4

Max: 1,519.3

Range: 21.9

Average: 1,509.2

Standard Deviation: 4.63 ft

0ft 470ft 940ft



9/16/2025

7-102N-43W
Nobles County
Minnesota

Boundary Center: 43° 38' 56.26, -96° 2' 53.8

Maps Provided By:



© AgriData, Inc. 2023

www.AgriDataInc.com

Field borders provided by Farm Service Agency as of 5/21/2008.